

REV.	ECN.NO.	MODIFY.CONTENT	DATE
AO		NEW	2017/10/18

NOTES:

1. ELECTRICAL CHARACTERISTICS

- 1-1. CONTACT RESISTANCE: 60 Milliohms Max
- 1-2. INSULATION RESISTANCE: 1,000 Megohms Min.
- 1-3. DIELECTRIC WITHSTANDING VOLTAGE: 500V AC FOR 1 MINUTE.

2. MECHANICAL CHARACTERISTICS

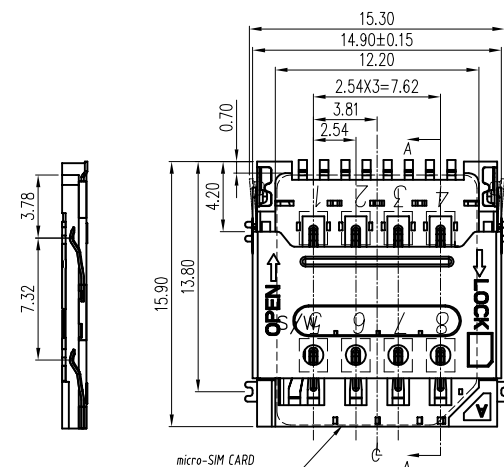
- 2-1. OPERATION TEMPERATURE RANGE: -25°C~+70°C
- 2-2. DURABILITY: 5000 CYCLES

3. MATERIAL:

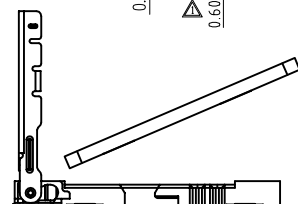
- 3-1. HOUSING: THERMOPLASTIC, UL 94-V0
- 3-2. TERMINAL: PHOSPHOR BRONZE, T=0.15
- 3-3. SHELL: STAINLESS STEEL, T=0.15

4. FINISHED:

- 4-1. TERMINAL: Ni PLATED UNDER, Au PLATED ON CONTACT AREA, G/F PLATED ON SOLDER TAIL



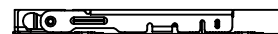
SECTION: A-A



STEP 1 INSERT Micro-SIM CARD

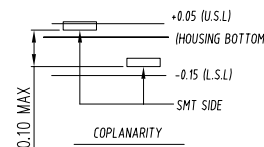
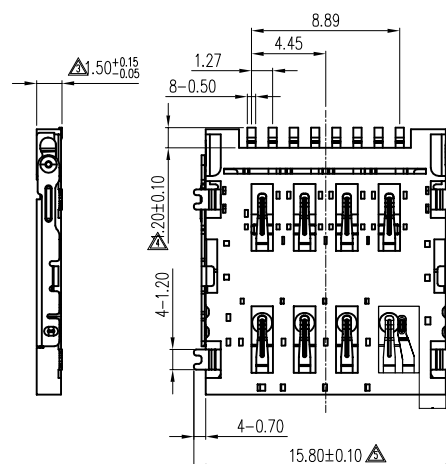


STEP 2 PUSH THE SHELL



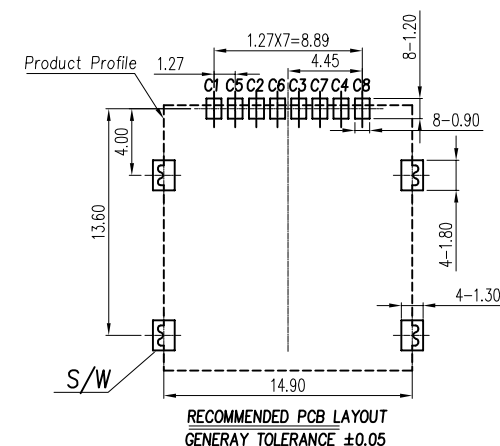
STEP 3 FINISH

SIM CARD	
Pin No.	NAME
C1	VCC
C2	RST
C3	CLK
C4	RESERVED
C5	GND
C6	VPP
C7	I/O
C8	RESERVED
S/W	Switch Pin



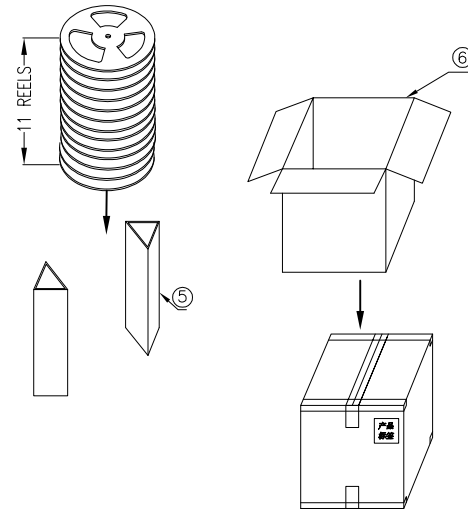
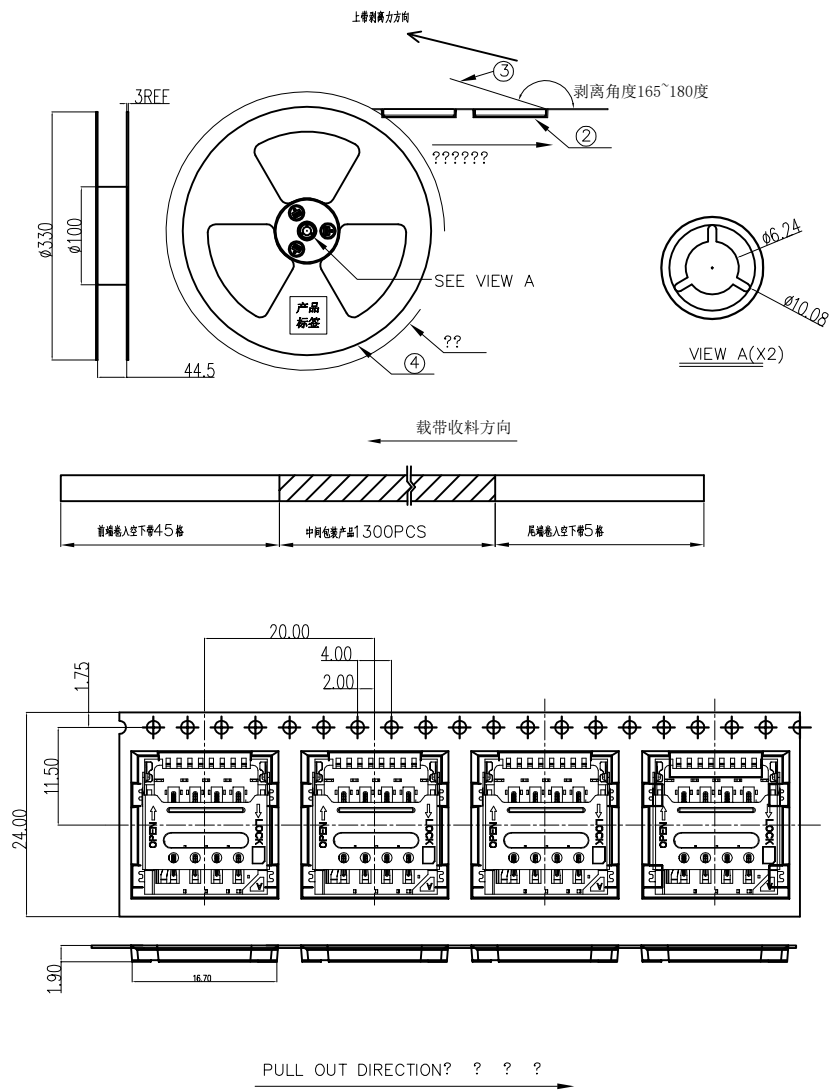
WITHDRAWAL CARD	INSERT CARD
GROUND PIN (C5) <input type="checkbox"/> Switch Pin (S/W)	GROUND PIN (C5) <input type="checkbox"/> Switch Pin (S/W)

NORMALLY OPEN IN THE CONNECTOR
WHEN THE CARD INSERT, THE SWITCH IS CLOSE



GENERAL TOLERANCE			DWG NO.		APPD:	WIND	Scale	1: 1
X.±0.45		x.*±5°	Title	MICRO SIM CARD 8PIN 1.5H (掀盖式 9PIN)	CHKD:		UNIT	mm
.X±0.35		.x*±2°			DR:			
.XX±0.25		.xx*±1°	Part NO.	5001B-SIM150-186	Date	2017/10/18		
.XXX±0.15		.xxx*±0.5°			东莞市文章济美电子有限公司			
SHEET	1/2							

REV.	ECN.NO.	MODIFY.CONTENT	DATE
A0		NEW	2017/10/18



PACKING NOTES:

1. PRIMARY PACKING: 1300PCS/REEL;
2. SECONDARY PACKING: 10 REELS/CARTON (13KPCS/CARTON)
3. PEELING RESISTANCE: 30gf~100gf
4. PEELING ANGLE: 165°~180°
5. PEELING SPEED: 300mm/minutes.

TABLE:

NO.	NAME	SPEC.	REMARK
①	成品	MICRO SIM CARD 1.5H	1300PCS/R
②	下带(载带)	PETW=24mm,P=20mm,T=0.3mm,	26.6M/1300PCS
③	上带(盖带)	W=21.5mm,T=0.06mm,	26.8M/1300PCS
④	REEL(蓝色卷盘)	330mm,100mm,44.5mm	1PCS/1300PCS
⑤	折叠板	296*464*6mm	4PCS/14300PCS
⑥	CARTON (外箱)	350*350*350mm	1PCS/14300PCS

GENERAL TOLERANCE		DWG NO.			APPD:	WND	Scale	1:1
X.±0.45	x.'±5°	Title	MICRO SIM CARD 8PIN 1.5H (掀盖式8PIN) 包装图		CHKD:		UNIT	mm
.X±0.35	.x'±2°				DR:			
.XX±0.25	.xx'±1°	Part NO.	5001B-SIM150-186		Date	2017/10/18	东莞市文章济美电子有限公司	
.XXX±0.15	.xxx'±0.5°							
SHEET	2/2							