

REV.	ECN.NO.	MODIFY.CONTENT	DATE
A		图面首次发行	2016/07/25

NOTES:

1. ELECTRICAL CHARACTERISTICS

1-1. CONTACT RESISTANCE:
60 Milliohms Max

1-2. INSULATION RESISTANCE:
1,000 Megohms Min.

1-3. DIELECTRIC WITHSTANDING VOLTAGE:
250V AC FOR 1 MINUTE.

2. MECHANICAL CHARACTERISTICS

2-1. OPERATION TEMPERATURE RANGE:
-25°C~+70°C

2-2. DURABILITY: 3000 CYCLES

3. MATERIAL:

3-1. HOUSING: THERMOPLASTIC,UL 94-V0

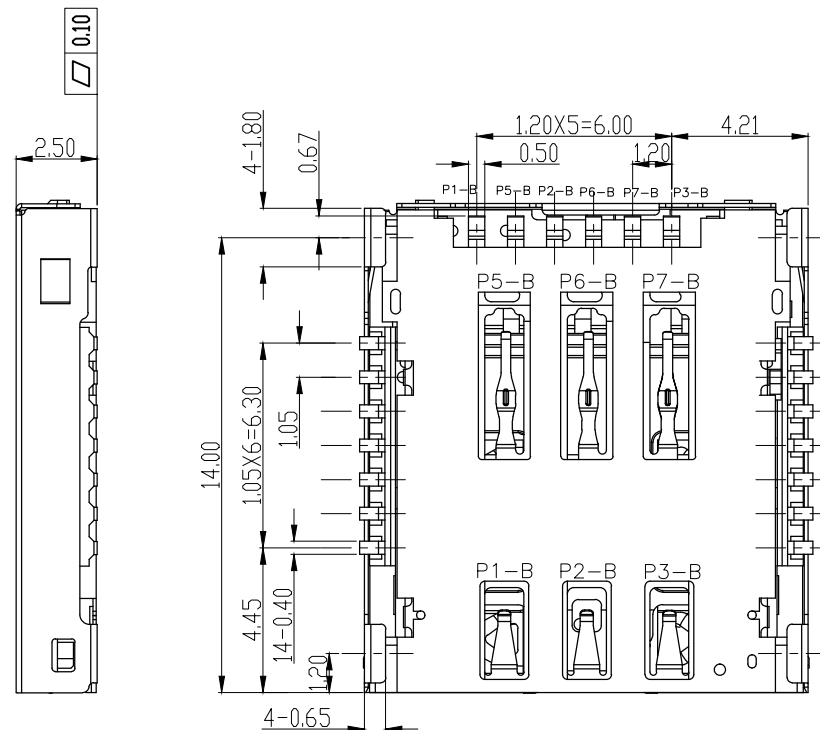
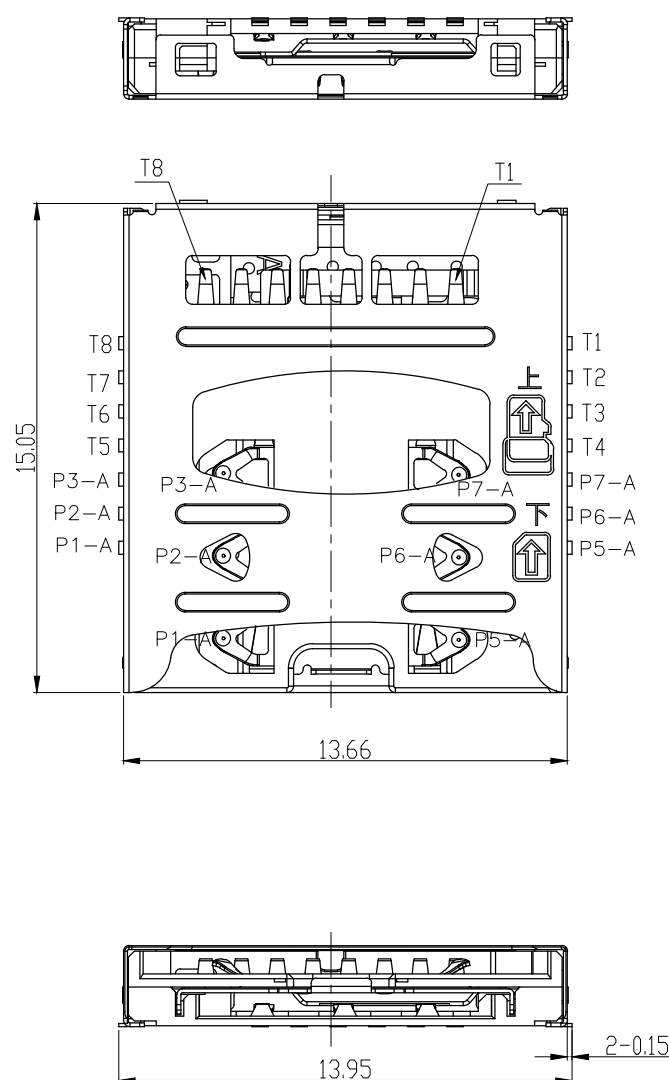
3-2. TERMINAL: PHOSPHOR BRONZE

3-3. SHELL: STAINLESS STEEL

4. FINISHED:

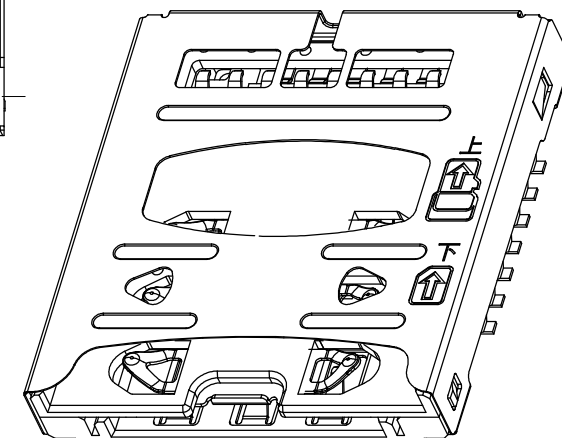
4-1. TERMINAL: Ni PLATED UNDER,Au PLATED ON
CONTACT AREA,G/F PLATED ON SOLDER TAIL

4-2. SHELL: Ni PLATED UNDER,G/F PLATED ON
SOLDER TAIL



T-CARD P/N	PIN NAME
T1	DAT2
T2	CD/DAT3
T3	CMD
T4	VDD
T5	CLK
T6	VSS
T7	DATO
T8	DAT1

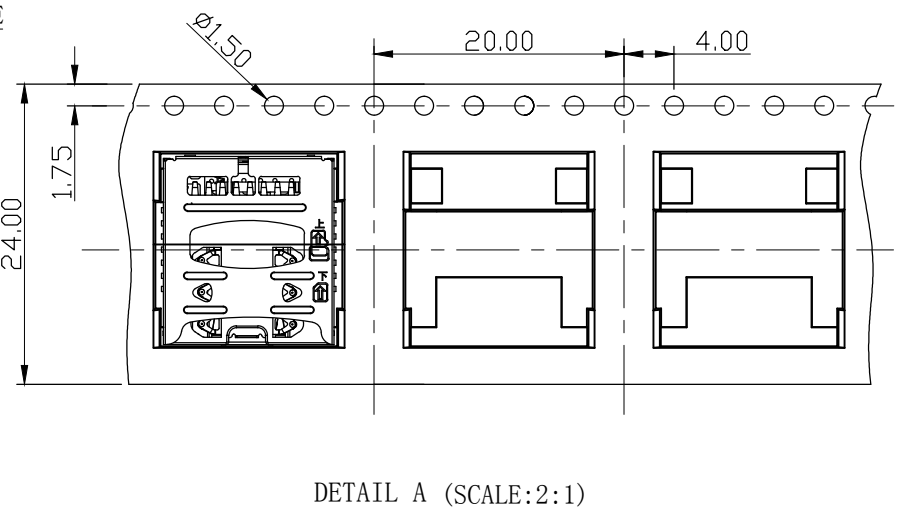
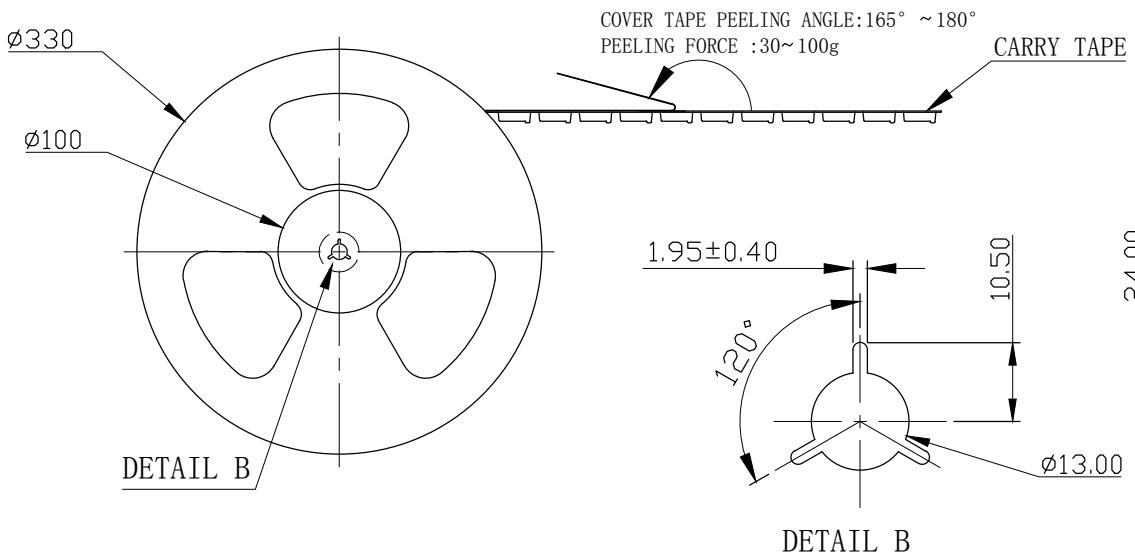
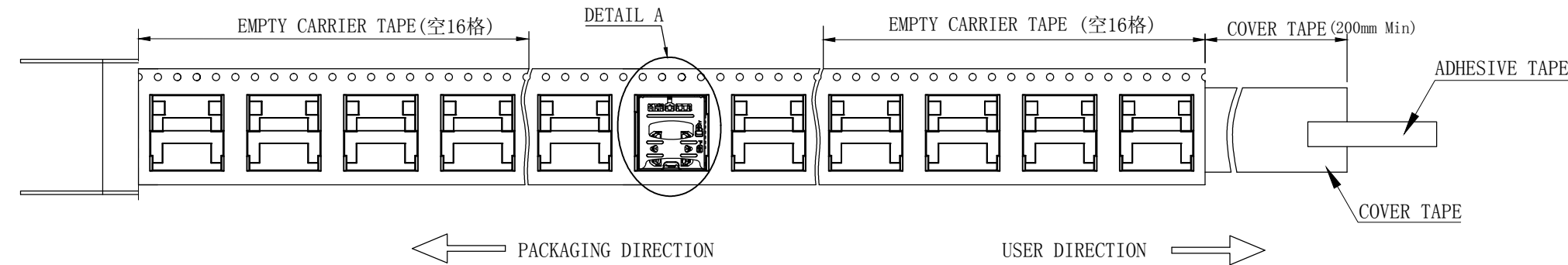
NANO SIM P/N	PIN NAME
P1 A/B	VCC
P2 A/B	RST
P3 A/B	CLK
P5 A/B	GND
P6 A/B	VPP
P7 A/B	I/O



GENERAL TOLERANCE		图号	设计	WIND	比例	1:1
X.±0.35	x.±5°	品名	2.5H 3 CHOOSE 2 双层卡座 (DUAL NANO OR NANO + T-CARD) FOR CUSTOMER	审核	单位	mm
.X±0.30	.x'±2°			核准	视角	⌀
.XX±0.20	.xx'±1°	料号	5001B-SIM250-134	日期	2016/07/26	版本
.XXX±0.15	.xxx'±0.5°					
页号	1/3					

东莞市文章济美电子有限公司

REV.	ECN.NO.	MODIFY.CONTENT	DATE
A		图面首次发行	2016/07/25



1	JYS-SIM250-134	1000	12	12000	340X340X352
ITEM	PRODUCT NO.	QTY/REEL	REEL/CARTON	QTY/CARTON	CARTON SIZE

GENERAL TOLERANCE		图号	设计	WIND	比例	1:1
X.±0.35	x.°±5°	品名	2.5H 3 CHOOSE 2 双层卡座 (DUAL NANO OR NANO + T-CARD) FOR CUSTOMER	审核	单位	mm
.X±0.30	.x°±2°			核准	视角	
.XX±0.20	.xx°±1°	料号	5001B-SIM250-134	日期	2016/07/26	版本 A
.XXX±0.15	.xxx°±0.5°		东莞市文章济美电子有限公司			
页号	3/3					