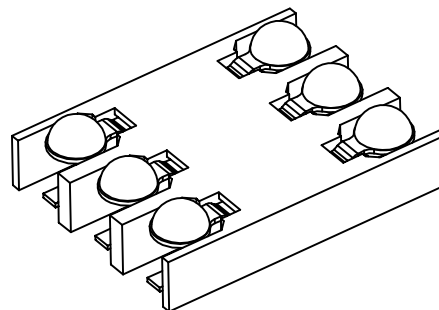
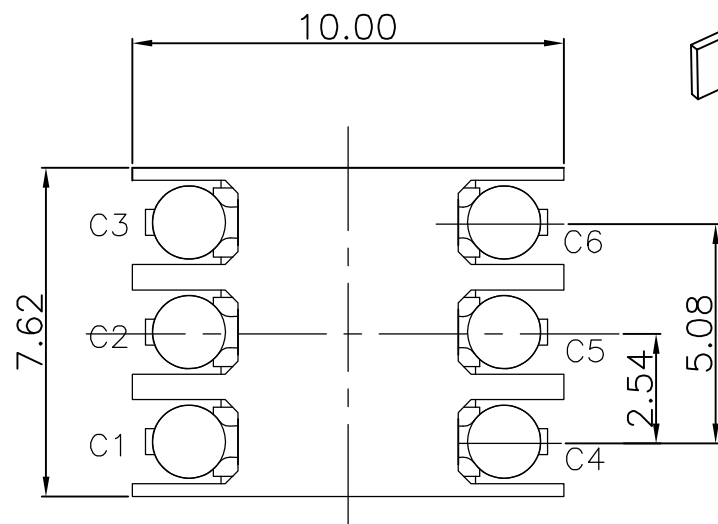


REV.	ECN.NO.	MODIFY.CONTENT	DATE
A0		NEW	2017/10/10



NOTES:

1, Material:

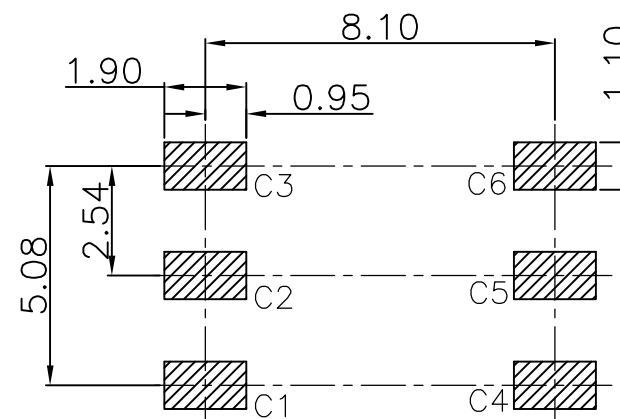
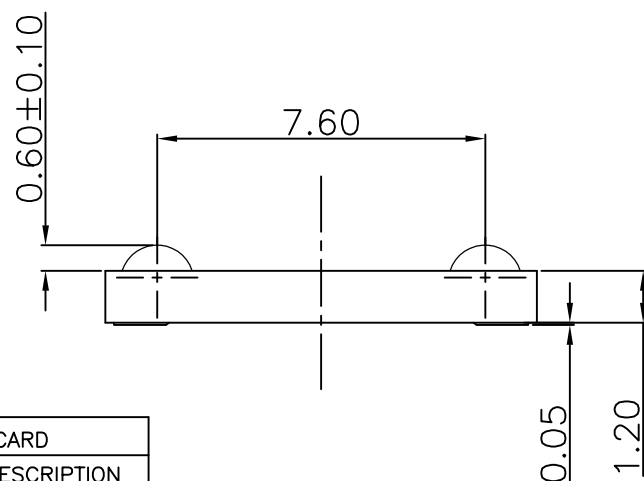
Housing:HI-Temp plastic UL 94V-0

Contact:Copper Alloy

2, Finish :

CONTACT:G/F" Gold plated on conatct area;

G/F plated on solder tails, Base Nickel :50u"Min



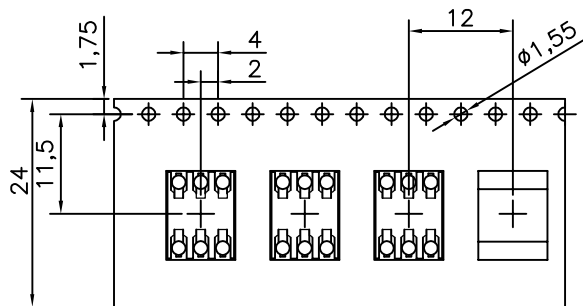
Recommended P.C.B Layout
(Tolerance= 0.05)

SIM CARD	
PIN NO.	DESCRIPTION
C1	VCC
C2	RST
C3	CLK
C4	RESERVED
C5	GND
C6	VPP

GENERAL TOLERANCE		DWG NO.	APPD:	Scale	1:1
X.±0.45	x.'±5°	Title	CHKD:	UNIT	mm
.X±0.35	.x'±2°		DR:		
.XX±0.25	.xx'±1°	Part NO.	Date	2017/10/10	
.XXX±0.15	.xxx'±0.5°				
SHEET	1/2			东莞市文章济美电子有限公司	

REV.	ECN.NO.	MODIFY.CONTENT	DATE
AO		图面首次发行	2017/10/10

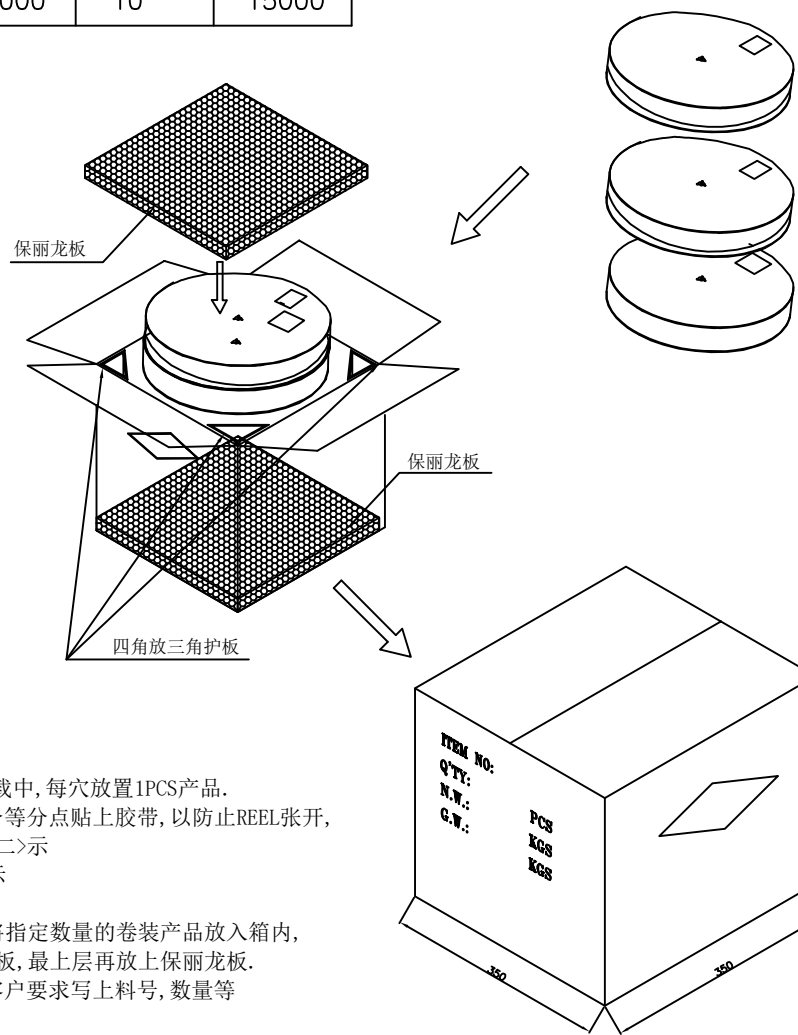
〈图一〉



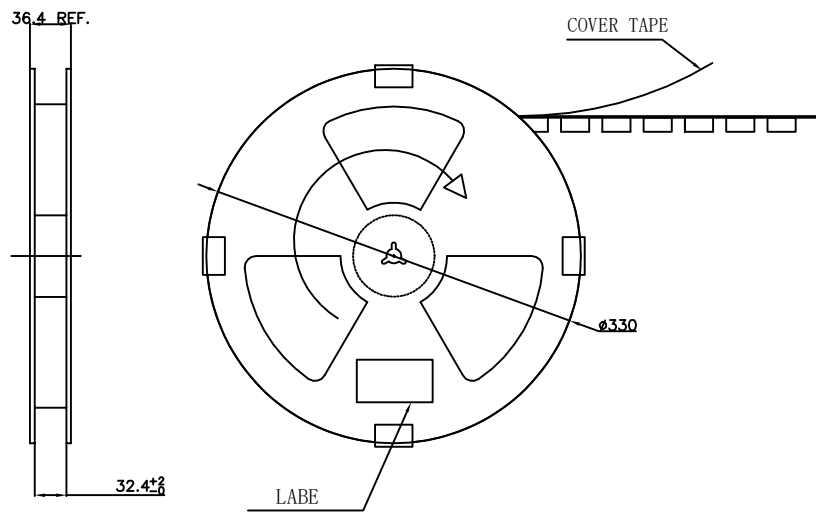
〈TABLE 1〉 PACKAGING QUANTITY

QTY/REEL	REEL/CARTON	QTY/CARTON
15000	10	15000

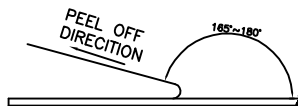
〈图三〉



〈图二〉



COVER TAPE PEELING FORCE:50gf~150gf



NOTE:

- 依〈图一〉示放置产品于下载中,每穴放置1PCS产品.
- 包装机包好后,在REEL的个等分点贴上胶带,以防止REEL张开,每REEL贴1PCS标签,如〈图二〉示
- 包装数量见如〈TABLE 1〉示
- 包装成箱见如〈图三〉示
箱底放保利龙板,再依次将指定数量的卷装产品放入箱内,四角分别放入四个三角护板,最上层再放上保利龙板.
- 封箱,在封好的纸箱上按客户要求写上料号,数量等

GENERAL TOLERANCE		图 号	设计	比例	1:1
X.±0.45	x.±5°	品 名	简易SIM CARD1.2~2.0H 包装图	审 核	单 位 mm
.X±0.35	.x±2°	料 号	5001B-SIM120-014	核 准	
.XX±0.25	.xx±1°			日 期	
.XXX±0.15	.xxx±0.5°			2017/10/10	
页 号	2/2	东莞市文章济美电子有限公司			