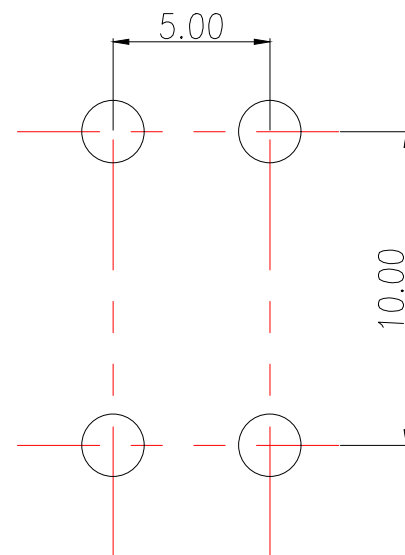
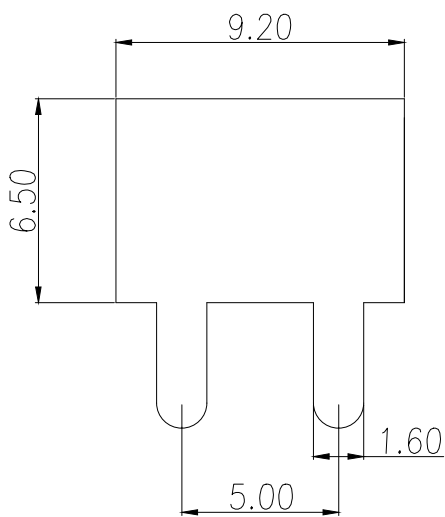
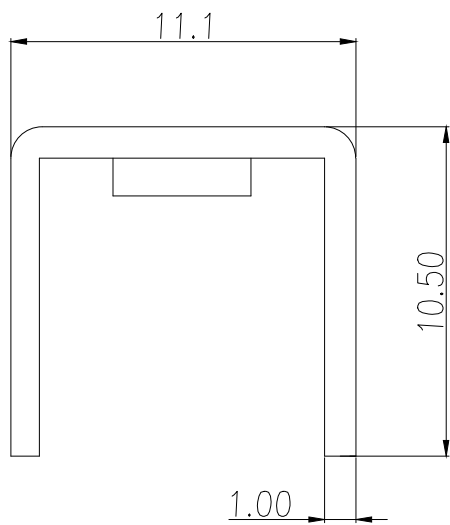


技术要求:

1. 额定电流: 45A
2. 材质: 黄铜 T1.0mm
3. 表面处理: 镀锡
4. 牙孔规格: M4



PCB.WELDING DRAWING (TOLERANCE:±0.05)

制图 DRAWN	变更内容 DESCRIPTION	日期 DATE	GENERAL TOLERANCE		制图 DRAWING	EMMA	料号 PART NO.	BX-T4-003	版本 REV.	A
			.X±0.30	X.'±5°	审核 CHECK	EVA	品名 TITLE	PCB SOLDERING TERMINAL	页次 SHEET	1/1
			.XX±0.25	.X'±1°	核准 APPROVAL	JADE	客户料号 CUTM.NO.			
			.XXX±0.15		单位 UNITS	MM	比例 SCALE	1:1		