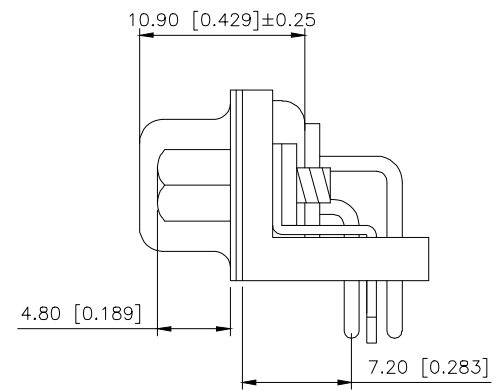
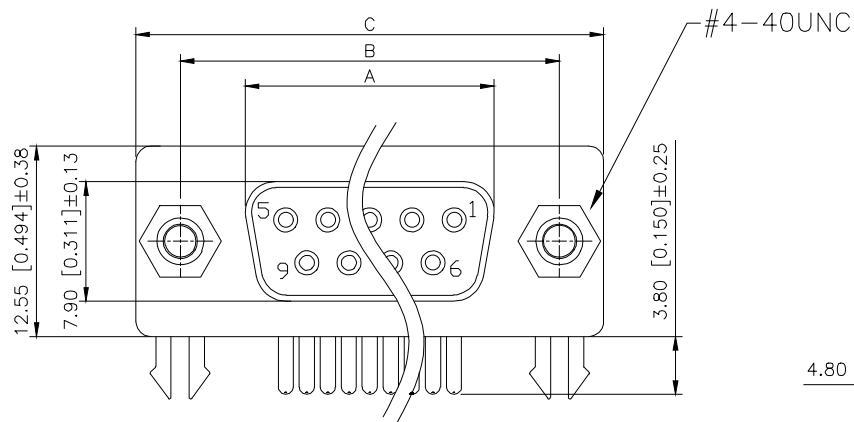


REVISIONS					
REV.	ECN NO.	LOCATION	DESCRIPTION	DATE	DESIGN
A0	N/A		INITIAL RELEASE	/	/
A1	N/A			2025.04.24	

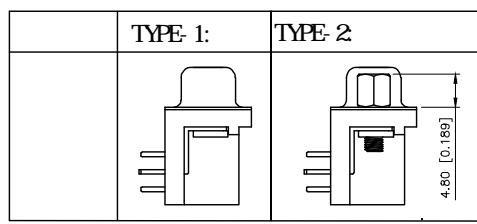
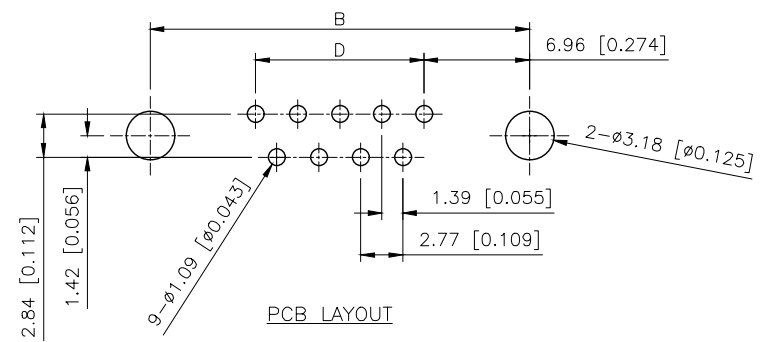
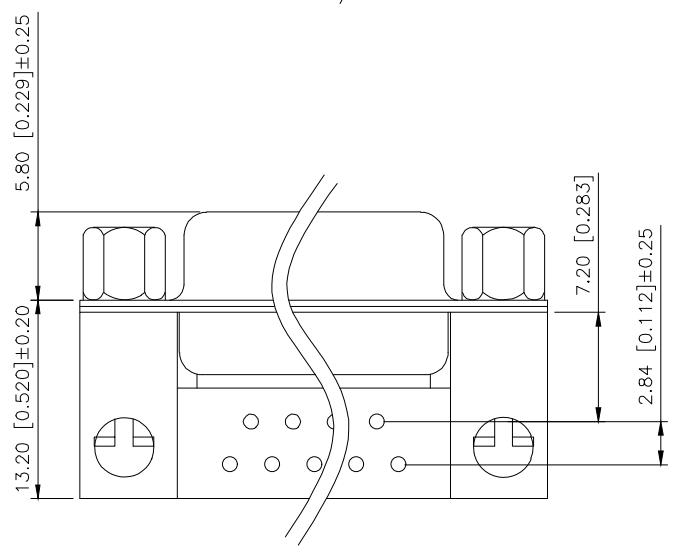


Specifications:

Current rating:5A AC/DC
5A AC/DC
Voltage rating:250V AC
250V AC
Withstanding voltage:500V AC/MIN
500V AC/
Temperature range:-55 -+105
-55 -+105
Insulation resistance:1000MQMIN
1000MQ
Contact resistance:30mQMAN
:≤30mΩ
Material And FINISHED:
INSULATOR:PBT UL 94V-0
PBT UL 94V-0
SHELL: SPCC-SD Plated Ni / Au / Sn
/ /

PART NO.:
X03 09 F C 2 W 2

Series No
Row No-Pin No XX-09;15;25;37
Welding Board Angle:F-Female
C Car-pin
Planting Category:
1:1u 2:2u 3:3u 4:5u 5:15u 6:30u 7:AuSn
Color: B:Black W:White BL:Blue
Y:Yellow G:Green R:Red
1:TYPE-1; 2:TYPE-2



AuGLAR	±5°
X.	±0.40
X.x	±0.30
X.xx	±0.20
X.xxx	±0.15
UNSPECIFIED TOLERANCES	



DESIGN	VIEW:	MODEL TYPE: D-SUB
CHECKED	UNIT: mm/in	PART NO.: X0309FC2W2
APPROVED	SIZE: A4	DWG NO.:

NO.OF CONTACT	A±0.25	B±0.13	C±0.38	D
09	16.33	24.99	30.81	11.08
15	24.66	33.32	39.14	19.39
25	38.38	47.04	53.04	33.24
37	55.42	63.50	69.32	49.86