

REV.	ECN NO.	DESCRIPTION	DATE	DESIGN
C	ECN NO.	MODIFY NOTE	2020.06.23	SYJ
D	ECN NO.	UPDATE THE DRAWING	2020.08.03	SYJ

# NOTE:

## 1.MATERIAL SPECIFICATION:

1.HOUSING:HIGH TEMPERATURE RESISTANT PLASTIC,UL94 V-0.

2.TERMINAL: COPPER ALLOY(C2680)

3.MID PLATE: STAINLESS STEEL(SUS201)

4.FRONT SHELL: STAINLESS STEEL(SUS201)

## 2.PLATING SPECIFICATION:

### 2-1.TERMINAL:

Ni 50u" MIN. UNDER PLATED OVER ALL.

Au PLATED ON THE FUNCTIONAL AREA OF CONTACT.

(GOLD PLATING THICKNESS FOLLOW THE P/N)

PLATING SPECIFICATIONS OF THE SOLDER AREA FOLLOW THE P/N

### 2-2.FRONT SHELL:

PLATING SPECIFICATIONS FOLLOW THE P/N

### 2-3.MID PLATE PLATE:

CLEAR ONLY

## 3.MECHANICAL PERFORMANCE,

3-1.INSERTION FORCE: 0.5~2.0kgf.

3-2.REMOVAL FORCE: 0.8kgf~2.0kgf.

3-3.DURABILITY: 10000 CYCLES.

## 4.ELECTRICAL PERFORMANCE,

4-1. VOLTAGE RATING:20 V DC/AC (RMS. max)

CURRENT RATING:3 AMPS. FOR TOTAL VBUS/GND PINS;

1.25AMPS FOR CC PIN,0.25 AMPS. FOR ALL OTHER CONTACT.

4-2. LLCR:

VBUS & GND PINS AND OTHER PINS: 40mΩ/PIN MAX.

SHIELD: 50mΩ/MAX.

LLCR MAX. CHANGE OF ALL PINS: 10mΩ.

4-3.INSULATION RESISTANCE: 100MΩ MIN

4-4.DIELECTRIC WITHSTAND VOLTAGE,AC 100V FOR 1 MINUTE.

## 5. ENVIRONMENTAL PERFORMANCE:

OPERATING TEMPERATURE: -25℃~+85℃.

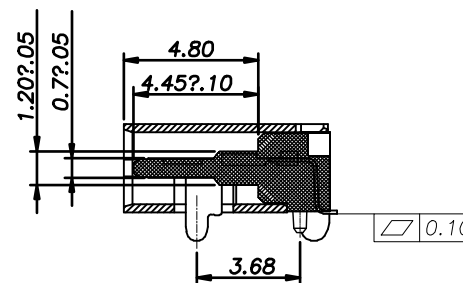
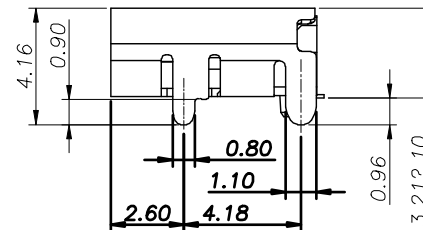
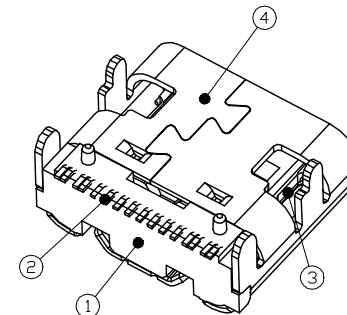
## 6.IR REFLOW:

THE PEAK TEMPERATURE ON THE BOARD SHALL

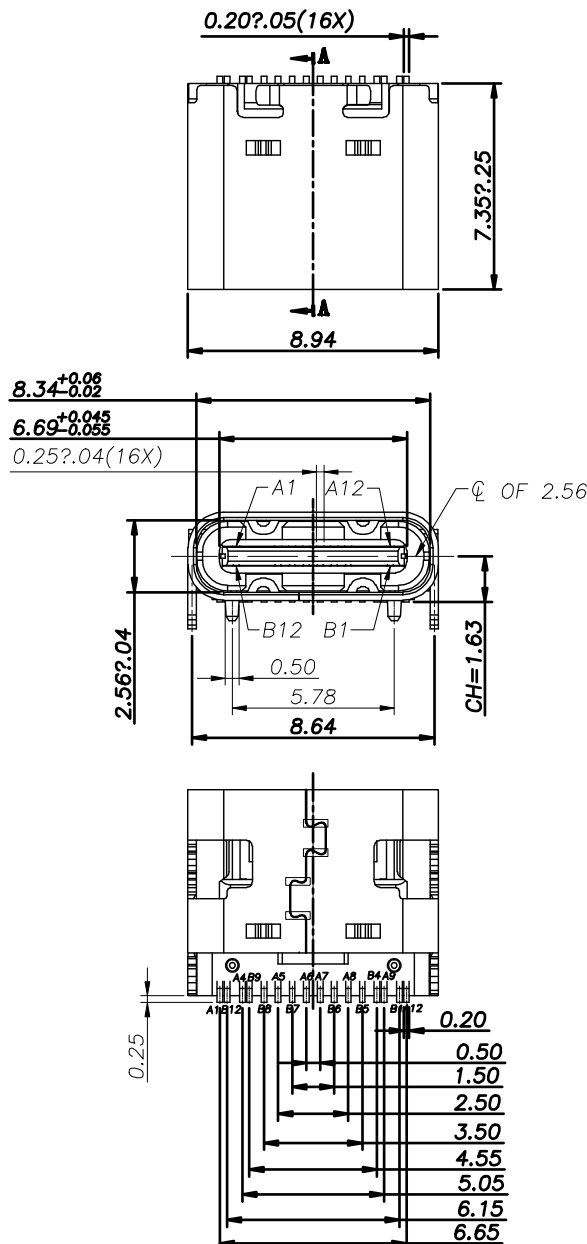
BE MAINTAINED FOR 10 SECONDS AT 260°C.

## 7.DATE CODE: XX XX

WEEK  
YEAR



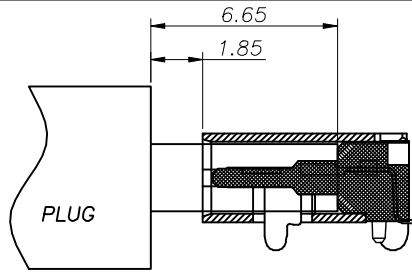
SECTION:A-A



TOLERANCE	NAME(INTENDED USE) CUSTOMER DRAWING	浙江创都电子科技有限公司
X.X ±0.30	X.X' ±10'	PART NO.
.XX ±0.20	.X' ± 8'	DESIGN: DRAW
.XXX ±0.10	.XX' ± 5'	CHED:
UNITS	mm	APPD:
MATERILA		
FINISH		

SCALE	SHEET	REV.
SCALE	SHEET	REV

REV.	ECN NO.	DESCRIPTION	DATE	DESIGN
C	ECN NO.	MODIFY NOTE	2020.06.23	SYJ
D	ECN NO.	UPDATE THE DRAWING	2020.08.03	SYJ



AFTER MATING

#### USB TYPE-C PIN ASSIGNMENTS

PIN NUMBER	SIGNAL NAME	PIN NUMBER	SIGNAL NAME
A1	GND	B12	GND
A4	VBUS	B9	VBUS
A5	CC1	B8	SBU2
A6	Dp1	B7	Dn2
A7	Dn1	B6	Dp2
A8	SBU1	B5	CC2
A9	VBUS	B4	VBUS
A12	GND	B1	GND

#### ORDER INFORMATION

**P/N: ACF016-1XXH1A1XX-XHR**

HOUSING MATERIAL

A: LCP  
E: PA9T

HOUSING COLOR

1: BLACK  
5: NATURE

SHELL MATERIAL

H: SUS304  
N: SK7

SHELL PLATING

1: Ni

D/C

0: WITHOUT D/C  
1: WITH D/C

CONTACT FUNCTIONAL AREA PLATED

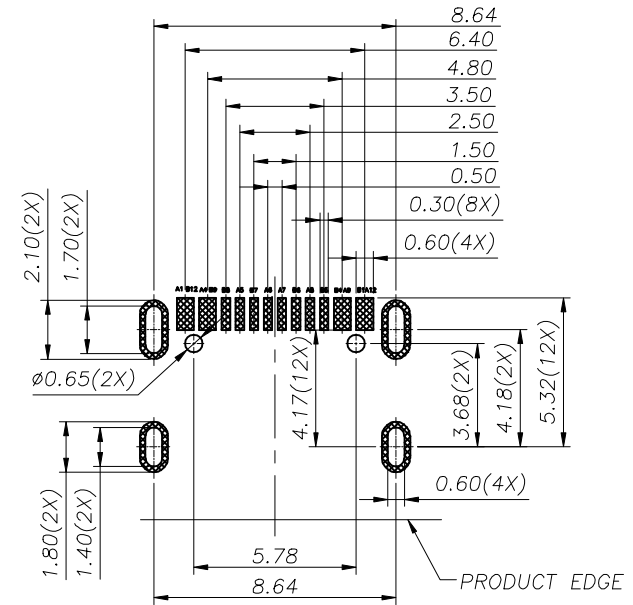
01: Au 1u"  
03: Au 3u"  
15: Au 15u"  
30: Au 30u"

CONTACT SOLDER AREA PLATED


1: Au 1u"

CONTACT METRIAL

A: C1814

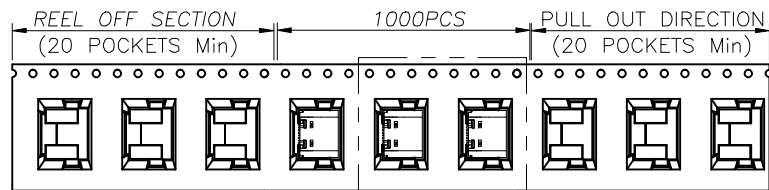


**RECOMMENDED PCB LAYOUT(TOP VIEW)**  
**THICKNESS 0.80MM:DEFAULT TOLERANCE:±0.05**

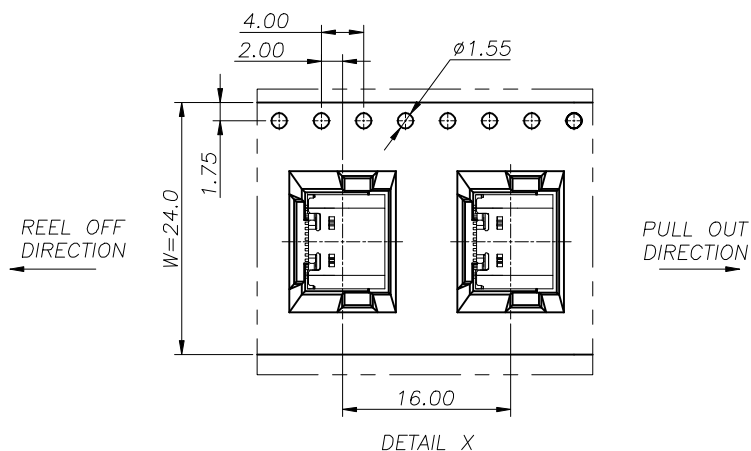
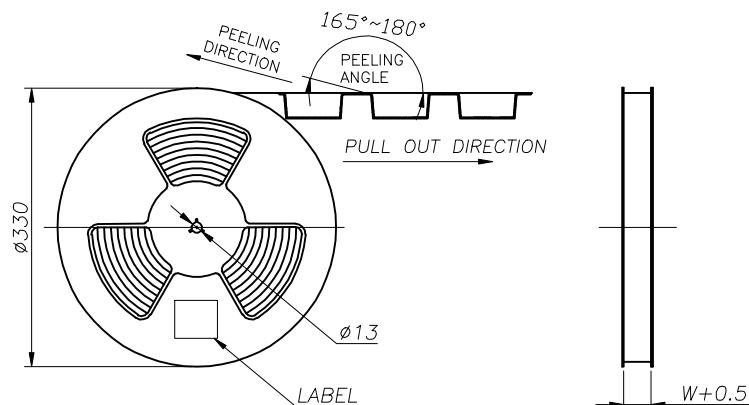
TOLERANCE			NAME(INTENDED USE) CUSTOMER DRAWING					
X.X	±0.30	X.' ±10'	PART NO.		TITLE:			
.XX	±0.20	.X' ± 8'						
.XXX	±0.10	.XX' ± 5'						
UNITS		mm	DESIGN: DRAW		DRAWG NO.			
MATERILA			CHED:		DRAW_NO.			
FINISH			APPD:			SCALE	SHEET	REV.
						SCALE	SHEET	REV

申明: 凡是没有产品料号或有“PRELIMINARY”标识的产品图均为临时图面暂不能生产/DECLARATION: ALL PRODUCT DRAWINGS WITHOUT THE PART NUMBER OR WITH “PRELIMINARY” LABEL ARE TEMPORARY DRAWINGS CAN NOT BE PRODUCED

REV.	ECN NO.	DESCRIPTION	DATE	DESIGN
C	ECN NO.	MODIFY NOTE	2020.06.23	SYJ
D	ECN NO.	UPDATE THE DRAWING	2020.08.03	SYJ



SEE DETAIL X



PAPER BOARD

REEL AND TAPE


REEL AND TAPE

PAPER BOARD

FOLDER  
PAPER BOARD

CARTON

	REEL	CARTON
CONNECTOR (PCS)	1000	15000

TOLERANCE		NAME(INTENDED USE) CUSTOMER DRAWING						
X.X	±0.30	X.' ±10'	PART NO.		TITLE:			
.XX	±0.20	.X' ± 8'						
.XXX	±0.10	.XX' ± 5'	DESIGN: DRAW		DRAWG NO.			
UNITS	mm							
MATERILA			CHED:		DRAW_NO.			
FINISH			APPD:					
					SCALE	SHEET	REV.	
					SCALE	SHEET	REV	