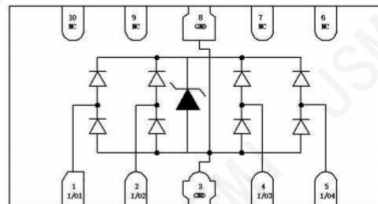


DESCRIPTION

The PUSB3AB4Z-JSM is an ultra low capacitance TVS diode,utilizing leading monolithic silicon technology to provide fast response time and low ESD clamping voltage, making this device an ideal solution for protecting voltage sensitive high-speed data of HDMI and USB ports.



FEATURES

- ◆ Ultra low capacitance (IO to IO typical value:0.3pF)
- ◆ No insertion loss to 3.0GHz
- ◆ Working voltage: 3.3V
- ◆ Low clamping voltage
- ◆ Up to 4 lines protects
- ◆ RoHS Compliant

APPLICATIONS

- ◆ HDMI, USB and MDDI ports
- ◆ Set-top box and Digital TV
- ◆ Video graphics cards
- ◆ Digital Video Interface (DVI)
- ◆ PCI Express and Serial SATA Ports

MECHANICAL DATA

- ◆ Package: DFN2510
- ◆ Lead Finish: Matte Tin
- ◆ Case Material: "Green" Molding Compound
- ◆ UL Flammability Classification Rating 94V-0
- ◆ Moisture Sensitivity: Level 3 per J-STD-020

ORDERING INFORMATION

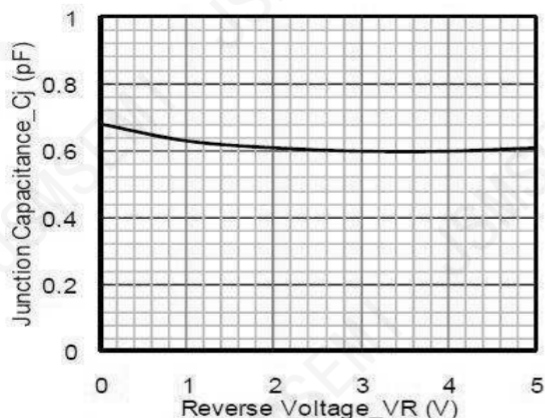
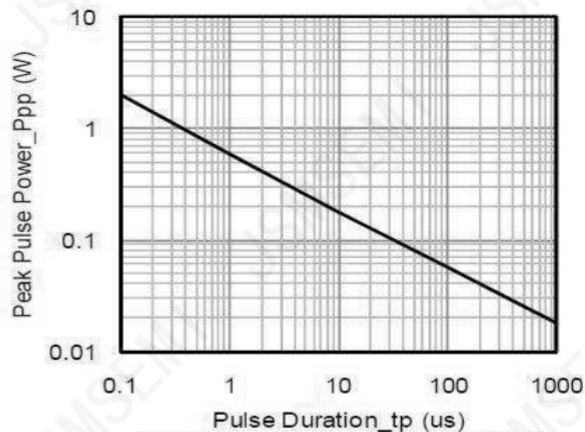
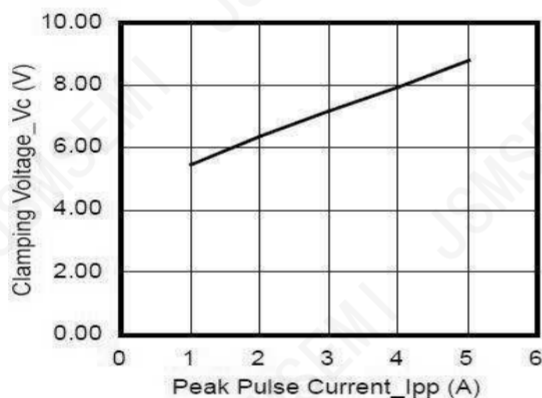
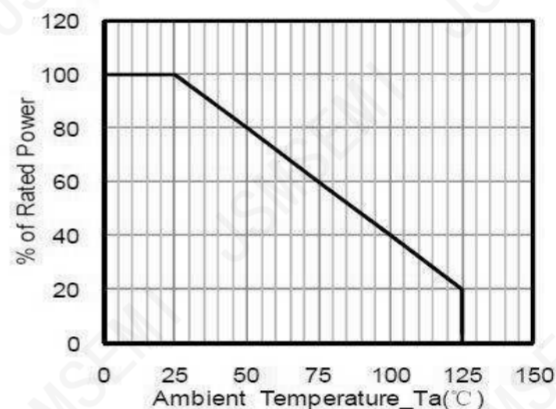
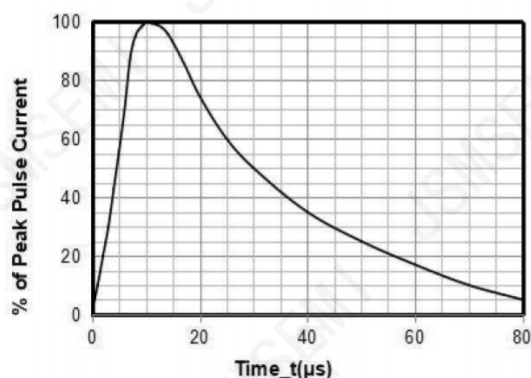
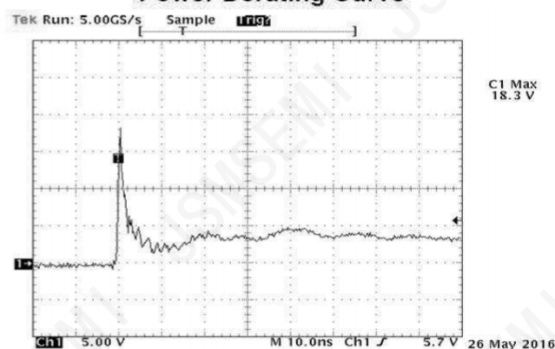
- ◆ Device:PUSB3AB4Z-JSM
- ◆ Package:DFN2510
- ◆ Material: Halogen free and RoHS compliant
- ◆ Packing: Tape & Reel
- ◆ Quantity per reel: 3,000/PCS

Absolute Maximum Ratings ($T_A=25^{\circ}\text{C}$ unless otherwise specified)

Parameter	Symbol	Value	Unit
Peak Pu se Power ($t_p=8/20\mu\text{s}$ waveform)	P_{ppp}	50	W
Peak Pu se Current (8/20 μs)	I_{pp}	5	A
ESD per EC 61000-4-2 (Air) ESD per EC 61000-4-2 (Contact)	V_{ESD}	± 15 ± 8	kV
Operating Temperature Range	T_J	-55 to +125	$^{\circ}\text{C}$
Storage Temperature Range	T_{stg}	-55 to +150	$^{\circ}\text{C}$

Electrical Characteristics ($T_A=25^{\circ}\text{C}$ unless otherwise specified)

Parameter	Symbol	Min	Typ	Max	Unit	Test Condition
Reverse Working Voltage	V_{RWM}			3.3	V	
Punch-Through Voltage	V_{PT}	3.5			V	$T = 2\mu\text{A}$, any I/O pin to ground
Snap-Back Voltage	V_{SB}	2.8			V	$T = 50\text{mA}$, any I/O pin to ground
Reverse Leakage Current	I_R			0.5	μA	$V_{RWM} = 3.3\text{V}$, any I/O pin to ground
Clamping Voltage	V_C			6.5	V	$PP = 1\text{A}$ (8 x 20 μs pulse), any I/O pin to ground
Clamping Voltage	V_C			10	V	$PP = 5\text{A}$ (8 x 20 μs pulse), any I/O pin to ground
Junction Capacitance	C_J		0.3	0.4	pF	$V_R = 0\text{V}$, $f = 1\text{MHz}$, between I/O pins
Junction Capacitance	C_J			0.8	pF	$V_R = 0\text{V}$, $f = 1\text{MHz}$, any I/O pin to ground

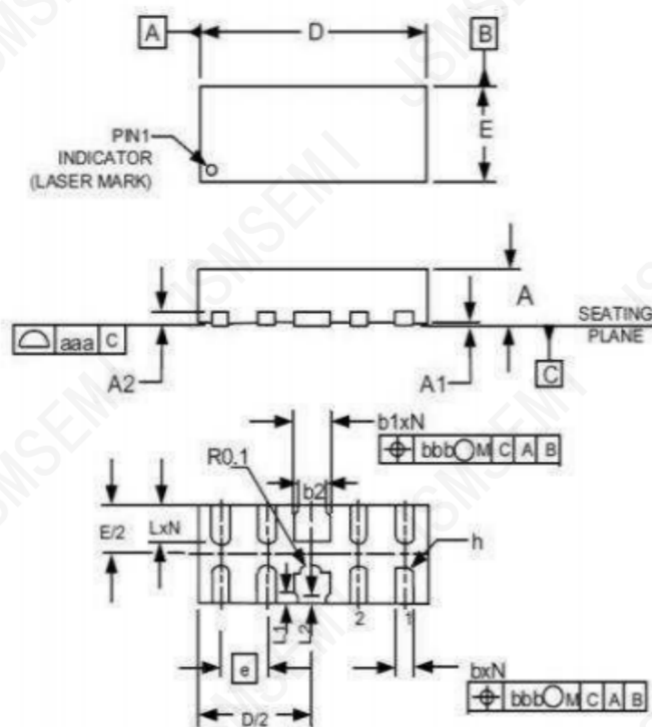
Typical Performance Characteristics (TA=25°C unless otherwise Specified)

Junction Capacitance vs. Reverse Voltage

Peak Pulse Power vs. Pulse Time

Clamping Voltage vs. Peak Pulse Current

Power Derating Curve

8 X 20µs Pulse Waveform


Note: Data is taken with a 10x attenuator

Contact discharge current waveform

per IEC61000-4-2

Package Mechanical Data



SYM	DIMENSIONS					
	MILLIMETERS			INCHES		
	MIN	NOM	MAX	MIN	NOM	MAX
A	0.45	0.50	0.55	.017	.020	.022
A1	0.000	0.001	0.002	0.00	0.02	0.05
A2	(0.15)			(.006)		
b	0.10	0.20	0.25	.006	.008	.010
b1	0.35	0.40	0.45	.014	.016	.018
b2	0.20	0.25	0.45	.005	.010	.018
D	2.45	2.50	2.55	.096	.098	.100
E	0.95	1.00	1.05	.037	.039	.041
e	0.50 BSC			.020 BSC		
L	0.35	0.40	0.45	.014	.016	.018
L1	0.00	0.075	0.10	.000	.003	.004
L2	0.00	0.05	0.05	.000	.002	.003
h	0.00	0.12	0.15	.000	.005	.006
h	0.07	0.12	0.17	0.003	0.005	0.007
N	8			8		
aaa	0.08			0.003		
Bbb	0.10			0.004		

Revision History

Rev.	Change	Date
V1.0	Initial version	6/27/2021

Important Notice

JSMSEMI Semiconductor (JSMSEMI) PRODUCTS ARE NEITHER DESIGNED NOR INTENDED FOR USE IN MILITARY AND/OR AEROSPACE, AUTOMOTIVE OR MEDICAL DEVICES OR SYSTEMS UNLESS THE SPECIFIC JSMSEMI PRODUCTS ARE SPECIFICALLY DESIGNATED BY JSMSEMI FOR SUCH USE. BUYERS ACKNOWLEDGE AND AGREE THAT ANY SUCH USE OF JSMSEMI PRODUCTS WHICH JSMSEMI HAS NOT DESIGNATED FOR USE IN MILITARY AND/OR AEROSPACE, AUTOMOTIVE OR MEDICAL DEVICES OR SYSTEMS IS SOLELY AT THE BUYER' S RISK.

JSMSEMI assumes no liability for application assistance or customer product design. Customers are responsible for their products and applications using JSMSEMI products.

Resale of JSMSEMI products or services with statements diferent from or beyond the parameters stated by JSMSEMI for that product or service voids all express and any implied warranties for the associated JSMSEMI product or s ervice. JSMSEMI is not responsible or liable for any such statements.

JSMSEMI All Rights Reserved. Information and data in this document are owned by JSMSEMI wholly and may not be edited, reproduced, or redistributed in any way without the express written consent from JSMSEMI.

Any and all information described or contained herein are subject to change without notice due to product/technology improvement, etc. When designing equipment, refer to the "Delivery Specification" for the JSMSEMI product that you intend to use.

For additional information please contact Kevin@jsemsemi.com or visit www.jsemsemi.com