



QNHCHIP

QN24C64D

Product Specification

QN24C64D

I²C-Compatible Serial EEPROM



Description

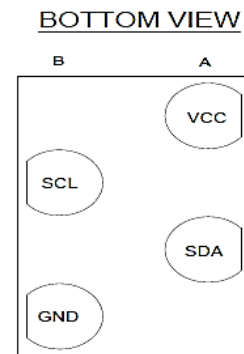
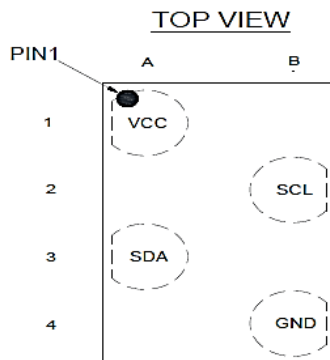
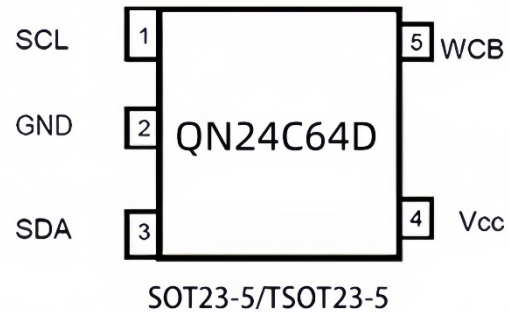
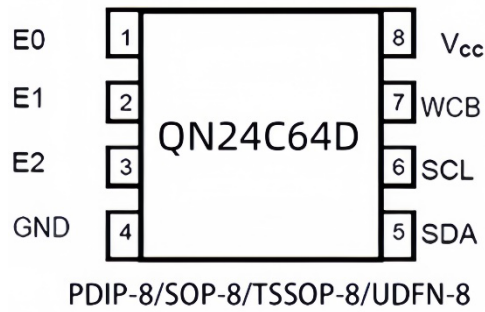
The QN24C64D is a 64-Kbit I²C-compatible Serial EEPROM (Electrically Erasable Programmable Memory) device. It contains a memory array of 8K × 8 bits, which is organized in 32 bytes per page.

FEATURES

- Single Supply Voltage and High Speed Mode
 - Minimum operating voltage down to 1.7V
 - 1 MHz clock from 2.5V to 5.5V
 - 400kHz clock from 1.8V to 2.5V
- Low power CMOS technology
 - Read current 0.2mA 400kHz, typical)
 - Write current 0.6mA (400kHz, typical)
- Schmitt Trigger, Filtered Inputs for Noise Suppression
- Sequential & Random Read Features
- 32 bytes Page Write Modes, Partial Page Writes Allowed
- Write protect of the whole memory array
- Additional Write Lockable Page
- Additional 128 bits Serial Number
- Self-timed Write Cycle (5ms maximum)
- High Reliability
 - Endurance: 1 Million Write Cycles
 - Data Retention: 100 Years
 - HBM: 6KV
 - Latch up Capability: +/- 200mA (25C)
- Package: PDIP-8, SOP-8, TSSOP-8, UDFN-8, MSOP-8, SOT23-5 and WLCSP-4.



Pin Configuration



Pin Definition

Pin	Name	Type	Description
1	E0	I/O	Slave Address Setting
2	E1	Input	Slave Address Setting
3	E2	Input	Slave Address Setting
4	GND	Ground	Ground
5	SDA	I/O	Serial Data Input and Serial Data Output
6	SCL	Input	Serial Clock Input
7	WCB	Input	Write Control, Low Enable Write
8	VCC	Power	Power

Pin Descriptions

Serial Clock (SCL):

The SCL input is used to positive-edge clock data in and negative-edge clock data out of each device.

Serial Data (SDA):

The SDA pin is bidirectional for serial data transfer. This pin is open drain driven and may be wire-OR'ed with any number of other open-drain or open-collector devices.

Device Addresses (E2, E1, E0):

The E2, E1 and E0 pins are device address inputs. Typically, the E2, E1 and E0 pins are for hardware addressing and a total of 8 devices can be connected on a single bus system. If these

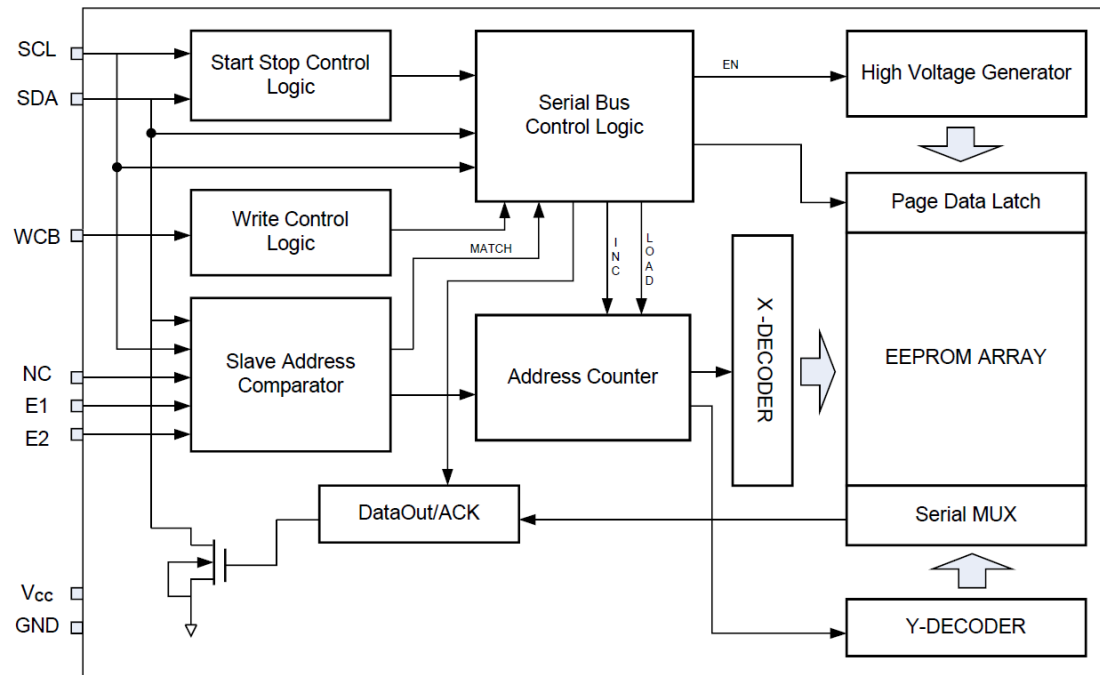


pins are left floating, the E2, E1 and E0 pins will be internally pulled down to GND.

Write Control (WCB):

The Write Control input, when WCB is connected directly to VCC, all write operations to the memory are inhibited. When connected to GND, allows normal write operations. If the pin is left floating, the WCB pin will be internally pulled down to GND.

Block Diagram





Electrical Characteristics

Absolute Maximum Ratings

Parameter	Value	Units
□ Storage Temperature	-65 ~ 150	°C
□ Operation Temperature	-40 ~ 125	°C
□ Maximum Operation Voltage	-0.5 ~ 6.5	V
Voltage on Any Pin with Respect to Ground	-0.5 ~ 6.5	V
DC Output Current(SDA=0)	5.0	mA

NOTICE: Stresses above those listed under “Absolute Maximum Ratings” may cause permanent damage to the device. This is a stress rating only and functional operation of the device at those or any other conditions above those indicated in the operational listings of this specification is not implied. Exposure to maximum rating conditions for extended periods may affect device reliability.

Pin Capacitance

Symbol	Parameter	Max.	Units	Test Condition
C _{I/O}	Input / Output Capacitance (SDA)	8	pF	V _{I/O} =GND
C _{IN}	Input Capacitance (E0, E1,E2,WCB,SCL)	6	pF	V _{IN} =GND

Note: Test Conditions: T_A = 25°C, F = 1MHz, V_{CC} = 5.0V.

DC Characteristics

(Unless otherwise specified, V_{CC} = 1.8V to 5.5V, T_A = -40°C to 125°C)

Symbol	Parameter	Min.	Typ.	Max.	Unit	Test Condition
V _{CC}	Supply Voltage	1.8	-	5.5	V	QN24C64D
I _{sb}	Standby Current	-	-	1.0	uA	V _{CC} = 3.3V, T _A = 85°C
		-	-	3.0	uA	V _{CC} = 5.5V, T _A = 85°C
		-	-	6.0	uA	V _{CC} = 5.5V, T _A = 105°C
		-	-	10.0	uA	V _{CC} = 5.5V, T _A = 125°C
I _{CC1}	Supply Current	-	0.2	0.4	mA	V _{CC} = 5.5V, Read at 400Khz
I _{CC2}	Supply Current	-	0.8	1.6	mA	V _{CC} = 5.5V Write at 400Khz
I _{LI}	Input Leakage Current	-	0.10	1.0	μA	V _{IN} = V _{CC} or GND
I _{LO}	Output Leakage Current	-	0.05	1.0	μA	V _{OUT} = V _{CC} or GND
V _{IL}	Input Low Level	-0.6	-	0.3V _{CC}	V	
V _{IH}	Input High Level	0.7V _{CC}	-	V _{CC} +0.5	V	
V _{OL1}	Output Low Level V _{CC} = 1.8V (SDA)	-	-	0.2	V	I _{OL} = 1.5 mA
V _{OL2}	Output Low Level V _{CC} = 3.0V (SDA)	-	-	0.4	V	I _{OL} = 2.1 mA

**100kHz AC Characteristics**

(Unless otherwise specified, $V_{CC}=1.8V$ to $5.5V$, $T_A=-40^{\circ}C$ to $125^{\circ}C$, $C_L=100pF$, Test Conditions are listed in Notes ⁽²⁾)

Symbol	Parameter	1.8≤VCC<5.5			Units
		Min.	Typ.	Max.	
f _{SCL}	Clock Frequency, SCL	-	-	100	kHz
t _{LOW}	Clock Pulse Width Low	4.7	-	-	μs
t _{HIGH}	Clock Pulse Width High		-	-	μs
t _{AA}	Clock Low to Data Out Valid		-	3.45	μs
t _I	Noise Suppression Time	-	-	0.1	μs
t _{BUF}	Time the bus must be free before a new transmission can start	4.7	-	-	μs
t _{HD,STA}	Start Hold Time	4.7	-	-	μs
t _{SU,STA}	Start Setup Time	4	-	-	μs
t _{HD,DAT}	Data In Hold Time	0	-	-	μs
t _{SU,DAT}	Data In Setup Time	0.25	-	-	μs
t _R	Inputs Rise Time ^[1]	-	-	1	μs
t _F	Inputs Fall Time ^[1]	-	-	0.3	μs
t _{SU,STO}	Stop Setup Time	4	-	-	μs
t _{DH}	Data Out Hold Time	0.2	-	-	μs
t _{SU,WCB}	WCB pin Setup Time	4	-	-	μs
t _{HD,WCB}	WCB pin Hold Time	4	-	-	μs
t _{WR}	Write Cycle Time	-	-	5	ms

Notes: [1] This parameter is ensured by characterization not 100% tested.

**400kHz&1Mhz AC Characteristics**

(Unless otherwise specified, $V_{CC} = 1.8V$ to $5.5V$, $T_A = -40^{\circ}C$ to $125^{\circ}C$, $C_L = 100pF$, Test Conditions are listed in Notes ⁽²⁾)

Symbol	Parameter	1.8≤VCC≤5.5			2.5≤VCC≤5.5			Units
		Min.	Typ.	Max.	Min.	Typ.	Max.	
f _{SCL}	Clock Frequency, SCL	-	-	400	-	-	1000	kHz
t _{LOW}	Clock Pulse Width Low	1.3	-	-	0.4	-	-	μs
t _{HIGH}	Clock Pulse Width High	0.6	-	-	0.4	-	-	μs
t _{AA}	Clock Low to Data Out Valid	0.05	-	0.9	0.05	-	0.55	μs
t _I	Noise Suppression Time	-	-	0.1	-	-	0.05	μs
t _{BUF}	Time the bus must be free before a new transmission can start	1.3	-	-	0.5	-	-	μs
t _{HD,STA}	Start Hold Time	0.6	-	-	0.25	-	-	μs
t _{SU,STA}	Start Setup Time	0.6	-	-	0.25	-	-	μs
t _{HD,DAT}	Data In Hold Time	0	-	-	0	-	-	μs
t _{SU,DAT}	Data In Setup Time	0.1	-	-	0.1	-	-	μs
t _R	Inputs Rise Time ^[1]	-	-	0.3	-	-	0.3	μs
t _F	Inputs Fall Time ^[1]	-	-	0.3	-	-	0.1	μs
t _{SU,STO}	Stop Setup Time	0.6	-	-	0.25	-	-	μs
t _{DH}	Data Out Hold Time	0.05	-	-	0.05	-	-	μs
t _{SU,WCB}	WCB pin Setup Time	1.2	-	-	0.6	-	-	μs
t _{HD,WCB}	WCB pin Hold Time	1.2	-	-	0.6	-	-	μs
t _{WR}	Write Cycle Time	-	-	5	-	-	5	ms

Notes:

(1) This parameter is ensured by characterization not 100% tested

(2) AC measurement conditions:

- R_L (connects to V_{CC}): 1.3kΩ (2.5V, 5.5V), 10kΩ (1.8V)
- Input pulse voltages: 0.3 V_{CC} to 0.7 V_{CC}
- Input rise and fall times: ≤50ns
- Input and output timing reference voltages: 0.5V_{CC}

Reliability Characteristic⁽¹⁾

Symbol	Parameter	Min.	Typ.	Max.	Unit
EDR ⁽²⁾	Endurance	1,000,000			Write cycles
DRET ⁽³⁾	Data retention	100			Years

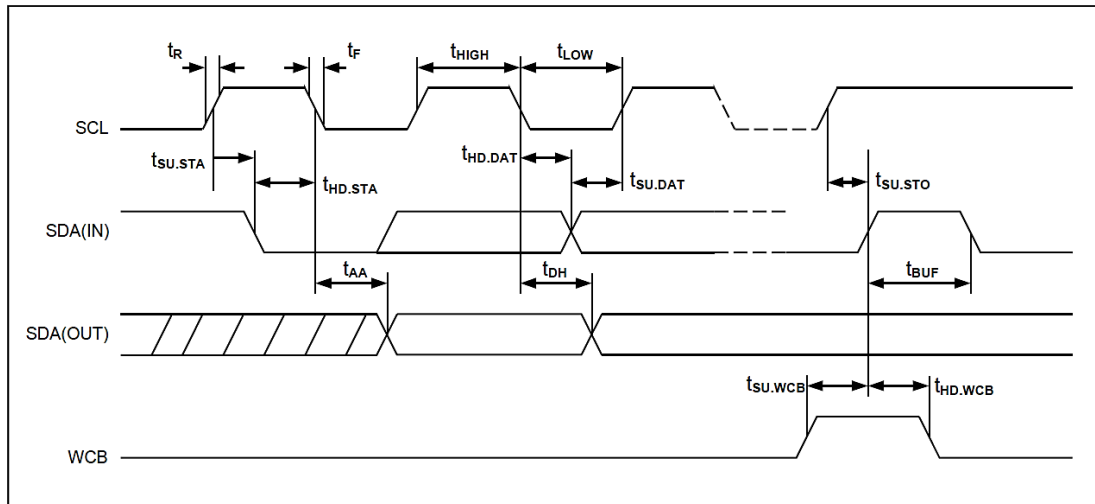
Note: (1) This parameter is ensured by characterization and is not 100% tested

(2) Under the condition: 25°C, 3.3V, Page mode

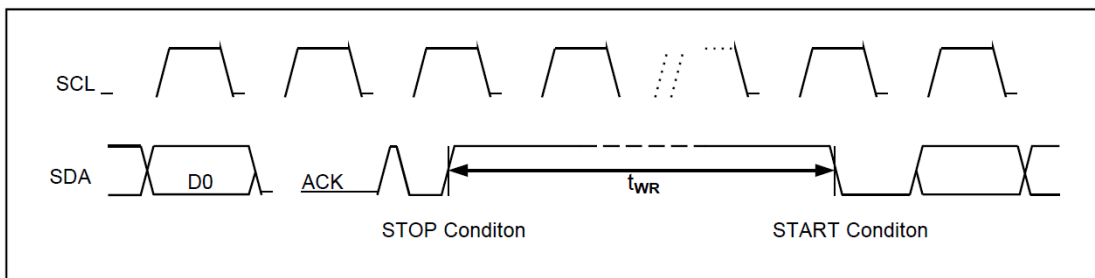
(3) Test condition: T_A = 55°C



Bus Timing



Write Cycle Timing



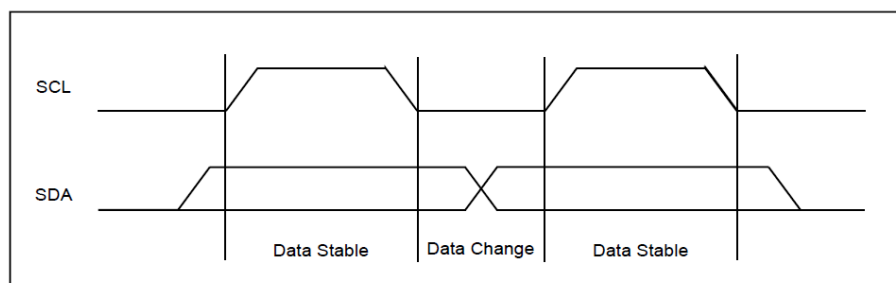
Note: The write cycle time t_{WR} is the time from a valid stop condition of a write sequence to the end of the internal clear/write cycle.

Device Operation

Data Input

The SDA pin is normally pulled high with an external device. Data on the SDA pin may change only during SCL low time periods. Data changes during SCL high periods will indicate a start or stop condition as defined below.

Data Validity



Start Condition

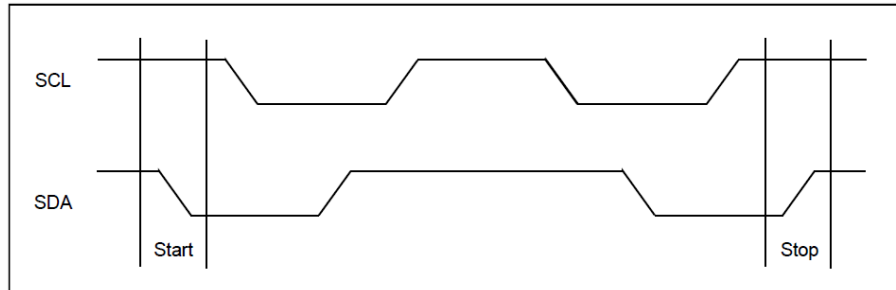
A high-to-low transition of SDA with SCL high is a start condition which must precede any other command.



Stop Condition

A low-to-high transition of SDA with SCL high is a stop condition. After a read sequence, the stop command will place the QN24C64D in a standby power mode.

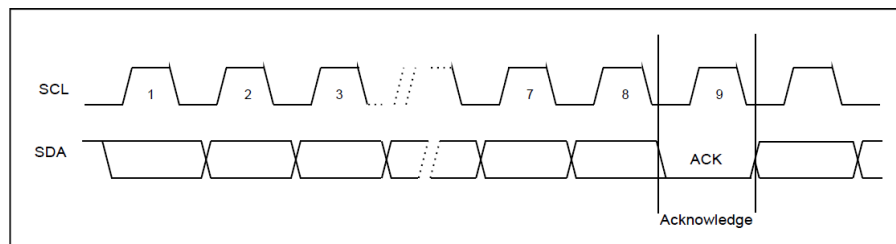
Start and Stop Definition



Acknowledge (ACK)

All addresses and data words are serially transmitted to and from the QN24C64D in 8-bit words. The QN24C64D sends a “0” to acknowledge that it has received each word. This happens during the ninth clock cycle.

Output Acknowledge



Standby Mode

The QN24C64D features a low-power standby mode which is enabled:

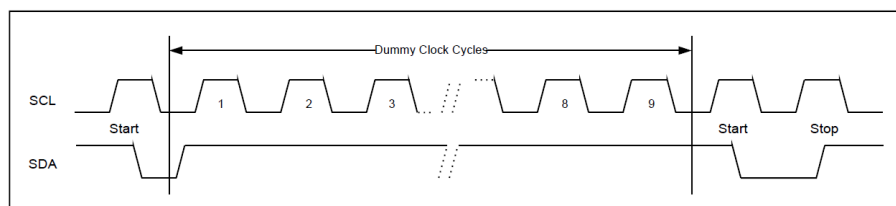
(a) after a fresh power up, (b) after receiving a STOP bit in read mode, and (c) after completing a self-time internal programming operation

Soft Reset

After an interruption in protocol, power loss or system reset, any two-wire part can be reset by following these steps:

(a) Create a start condition, (b) Clock nine cycles, and (c) create another start bit followed by stop bit condition, as shown below. The device is ready for the next communication after the above steps have been completed.

Soft Reset





Device Addressing

The QN24C64D requires an 8-bit device address word following a start condition to enable the chip for a read or write operation. The device address word consists of a mandatory one-zero sequence for the first four most-significant bits.

Device Address

Access area	Bit 7	Bit 6	Bit 5	Bit 4	Bit 3	Bit 2	Bit 1	Bit 0
Normal Area	1	0	1	0	E2	E1	E0	R/W
ID Page	1	0	1	1	E2	E1	E0	R/W
ID LOCK Bit	1	0	1	1	E2	E1	E0	R/W
Serial Number	1	0	1	1	E2	E1	E0	1

First Word Address

Data	Bit 7	Bit 6	Bit 5	Bit 4	Bit 3	Bit 2	Bit 1	Bit 0
Normal Area	X	X	X	A12	A11	A10	A9	A8
ID Page	X	X	X	X	0	0	X	X
ID LOCK Bit	X	X	X	X	X	1	X	X
Serial Number	X	X	X	X	1	0	X	X

Second Word Address

Data	Bit 7	Bit 6	Bit 5	Bit 4	Bit 3	Bit 2	Bit 1	Bit 0
Normal Area	A7	A6	A5	A4	A3	A2	A1	A0
ID Page	X	X	X	A4	A3	A2	A1	A0
ID LOCK Bit	X	X	X	X	X	X	X	X
Serial Number	X	X	X	X	A3	A2	A1	A0

The three E2, E1, and E0 device address bits to allow as many as eight devices on the same bus. These bits must compare to their corresponding hardwired input pins.

The E2, E1, and E0 pins use an internal proprietary circuit that biases them to a logic low condition if the pins are floating.

The eighth bit of the device address is the read/write operation select bit. A read operation is initiated if this bit is high and a write operation is initiated if this bit is low. Upon a compare of the device address, the Chip will output a zero. If a compare is not made, the device will return to a standby state.

Data Security

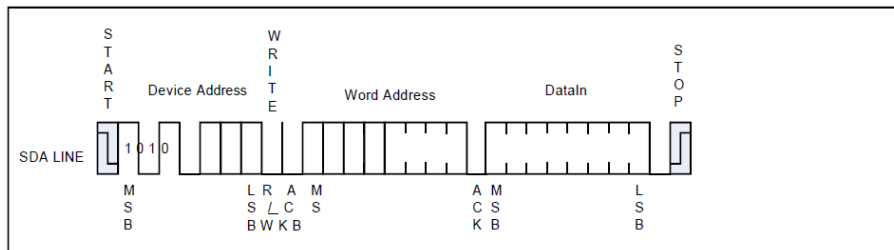
QN24C64D has a hardware data protection scheme that allows the user to write protect the whole memory when the WCB pin is at Vcc.



Write Operations

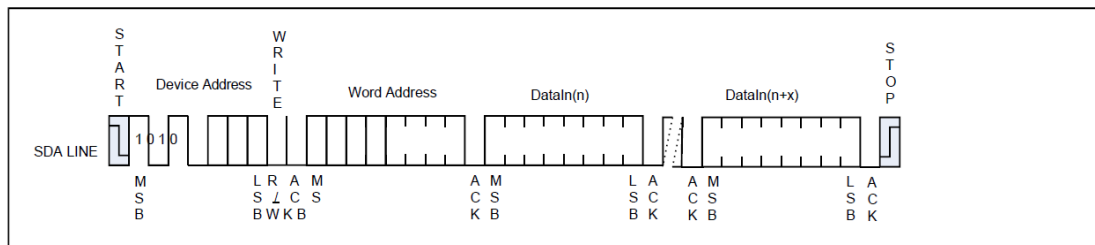
BYTE WRITE

A write operation requires an 8-bit data word address following the device address word and acknowledgment. Upon receipt of this address, the QN24C64D will again respond with a “0” and then clock in the first 8-bit data word. Following receipt of the 8-bit data word, the QN24C64D will output a “0” and the addressing device, such as a microcontroller, must terminate the write sequence with a stop condition. And then the QN24C64D enters an internally timed write cycle, all inputs are disabled during this write cycle and the QN24C64D will not respond until the write is complete.



Page Write

A page write is initiated the same as a byte write, but the master does not send a stop condition after the first data word is clocked in. Instead, after the QN24C64D acknowledges receipt of the first data word, the master can transmit more data words. The QN24C64D will respond with a “0” after each data word received. The microcontroller must terminate the page write sequence with a stop condition.



The lower three bits of the data word address are internally incremented following the receipt of each data word. The higher data word address bits are not incremented, retaining the memory page row location. When the word address, internally generated, reaches the page boundary, the following byte is placed at the beginning of the same page. If more than eight data words are transmitted to the QN24C64D, the data word address will roll-over, and previous data will be overwritten. The address roll-over during write is from the last byte of the current page to the first byte of the same page.

Acknowledge Polling

Once the internally timed write cycle has started and the QN24C64D inputs are disabled, acknowledge polling can be initiated. This involves sending a start condition followed by the device



address word. The read/write bit is representative of the operation desired. Only if the internal write cycle has completed will the QN24C64D respond with a “0”, allowing the read or write sequence to continue.

Write Identification Page

The Identification Page (32 bytes) is an additional page which can be written and (later) permanently locked in Read-only mode. It is written by the Write Identification Page instruction. This instruction uses the same protocol and format as Page Write (into memory array), except for the following differences:

- Device type identifier = 1011b
- Word Address bits A11~A10 which must be ‘00’ .
- LSB address bits A4~A0 define the byte address inside the Identification page. If the Identification page is locked, the data bytes transferred during the Write Identification Page instruction are not acknowledged (NoACK).

Lock Identification Page

The Lock Identification Page instruction (Lock ID) permanently locks the Identification page in Read-only mode. The Lock ID instruction is similar to Byte Write (into memory array) with the following specific conditions:

- Device type identifier = 1011b
- Address bit A10 must be ‘1’ ; all other address bits are don’t care
- The data byte must be equal to the binary value xxxx xx1x, where x is don’t care



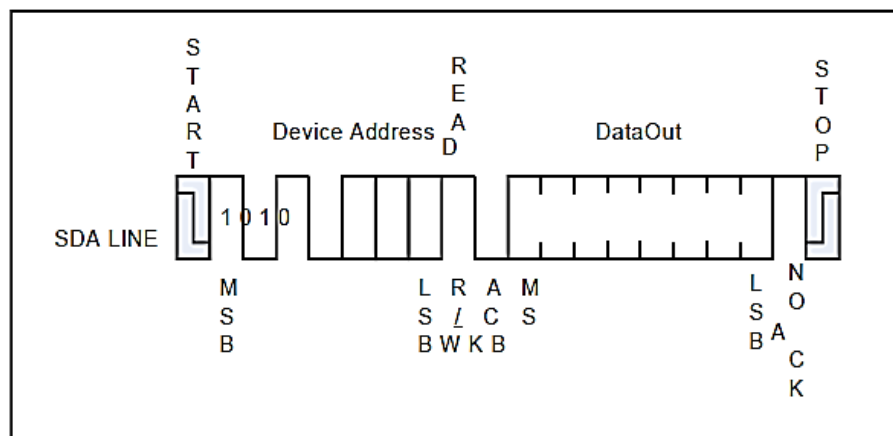
Read Operations

Read operations are initiated the same way as write operations with the exception that the read/write select bit in the device address word is set to “1”. There are three read operations: Current Address Read; Random Address Read and Sequential Read.

Current Address Read

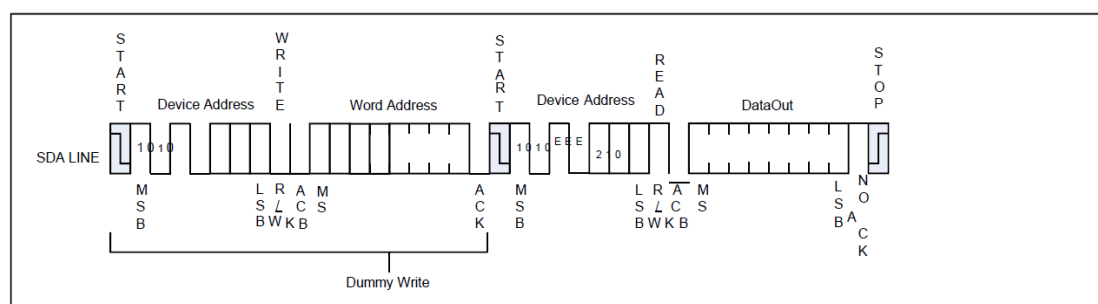
The internal data word address counter maintains the last address accessed during the last read or write operation, incremented by one. This address stays valid between operations as long as the chip power is maintained. The address roll-over during read is from the last byte of the last memory page to the first byte of the first page.

Once the device address with the read/write select bit set to “1” is clocked in and acknowledged by the QN24C64D, the current address data word is serially clocked out. The microcontroller does not respond with an input “0” but does generate a following stop condition.



Random Read

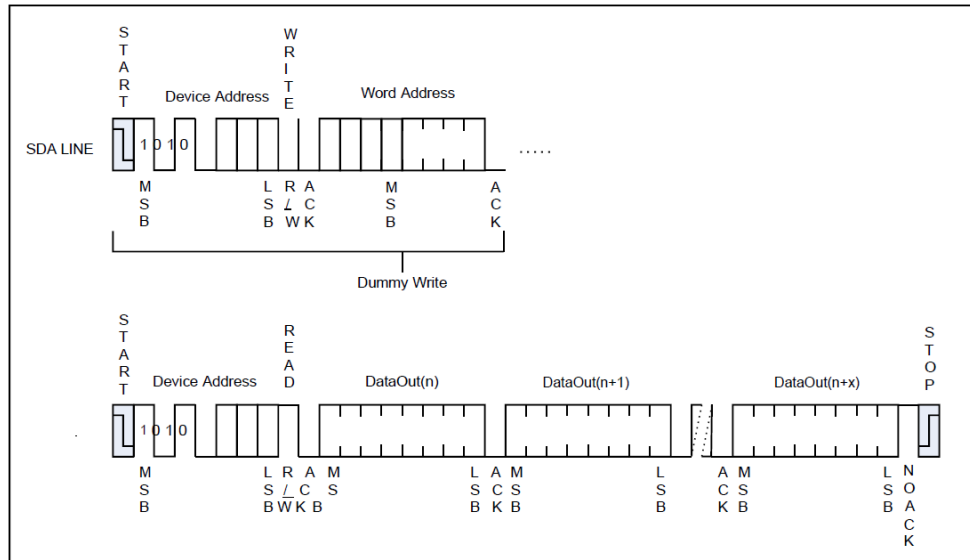
A Random Read requires a “dummy” byte write sequence to load in the data word address. Once the device address word and data word address are clocked in and acknowledged by the QN24C64D, the microcontroller must generate another start condition. The microcontroller now initiates a Current Address Read by sending a device address with the read/write select bit high. The QN24C64D acknowledges the device address and serially clocks out the data word. The microcontroller does not respond with a “0” but does generate a following stop condition.





Sequential Read

Sequential Reads are initiated by either a Current Address Read or a Random Address Read. After the microcontroller receives a data word, it responds with acknowledge. As long as the QN24C64D receives acknowledge, it will continue to increment the data word address and serially clock out sequential data words. When the memory address limit is reached, the data word address will roll-over and the Sequential Read will continue. The Sequential Read operation is terminated when the microcontroller does not respond with a “0” but does generate a following stop condition.

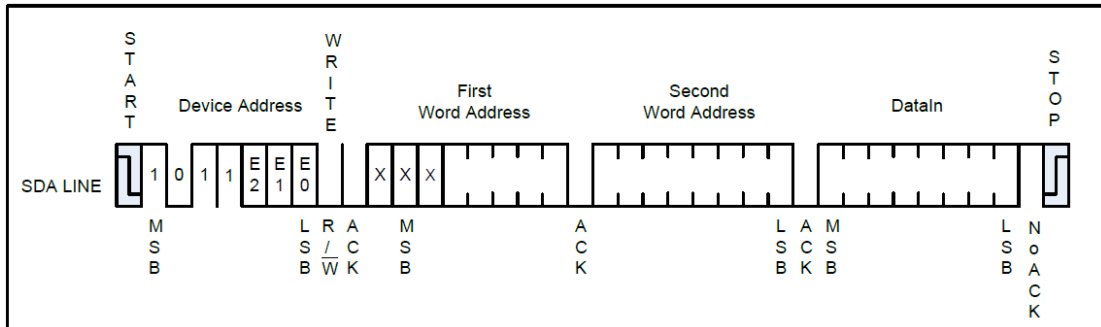


Read Identification Page

The Identification Page (32 bytes) is an additional page which can be written and (later) permanently locked in Read-only mode. The Identification Page can be read by Read Identification Page instruction which uses the same protocol and format as the Read Command (from memory array) with device type identifier defined as 1011b. The MSB address bits A12~A5 are don't care except for address bit A11~A10 which must be '00', the LSB address bits A4~A0 define the byte address inside the Identification Page. The number of bytes to read in the ID page must not exceed the page boundary (e.g. when reading the Identification Page from location 10d, the number of bytes should be less than or equal to 22, as the ID page boundary is 32 bytes).

Read the Lock Status

The locked/unlocked status of the Identification page can be checked by transmitting a specific truncated command [Identification Page Write instruction + one data byte] to the device. The device returns an acknowledge bit if the Identification page is unlocked, otherwise a NoACK bit if the Identification page is locked.



Read Serial Number

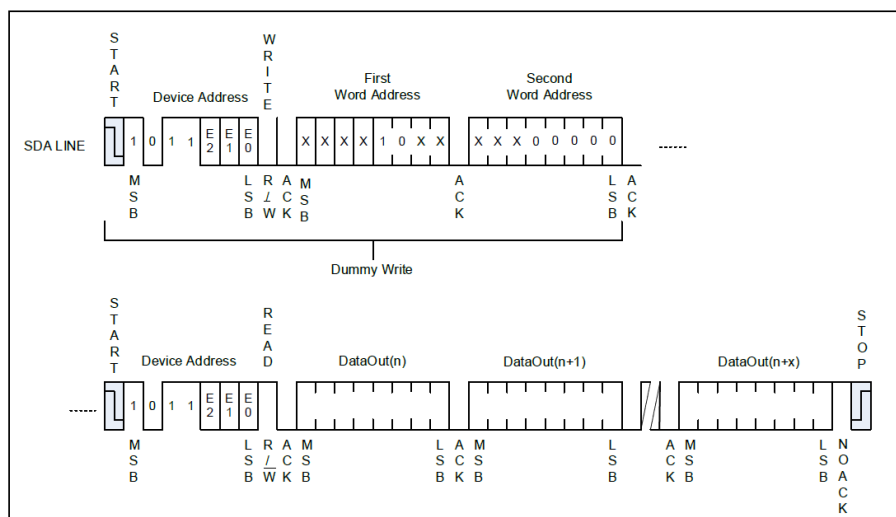
Reading the serial number is similar to the sequential read sequence but requires use of the device address seen, a dummy write, and the use of a specific word address. The entire 128 bits value must be read from the starting address of the serial number block to guarantee a unique number.

Since the address pointer of the device is shared between the regular EEPROM array and the serial number block, a dummy write sequence, as part of a Random Read or Sequential Read protocol, should be performed to ensure the address pointer is set to zero. A Current Address Read of the serial number block is supported but if the previous operation was to the EEPROM array, the address pointer will retain the last location accessed, incremented by one. Reading the serial number from a location other than the first address of the block will not result in a unique serial number.

Additionally, the word address contains a '10' sequence in bit A11 and A10 of the word address, regardless of the intended address as depicted. If a word address other than '10' is used, then the device will output undefined data.

Example: If the application desires to read the first byte of the serial number, the word address input would need to be 0800h.

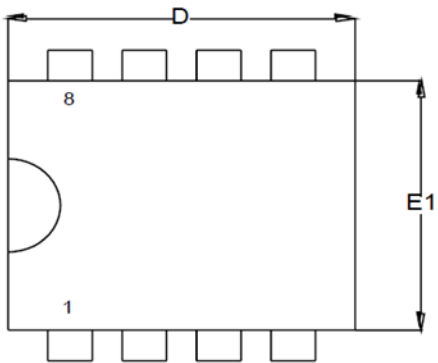
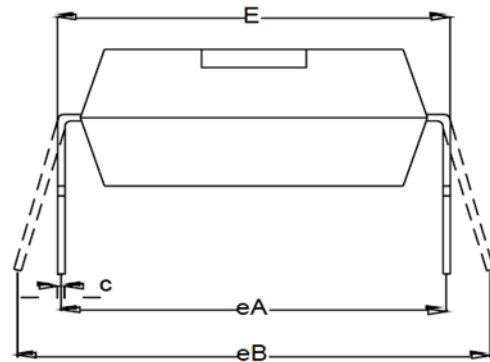
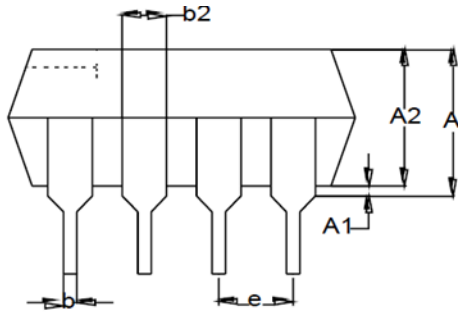
The Serial Number Read operation is terminated when the microcontroller does not respond with a zero (ACK) and instead issues a Stop condition.





Package Information(mm)

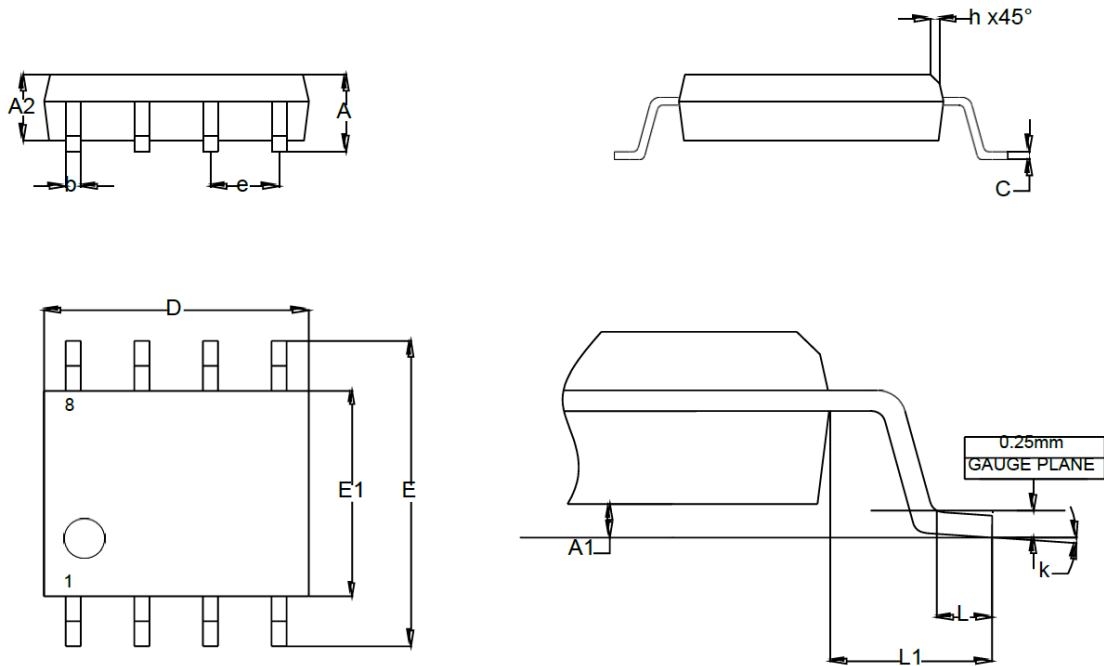
PDIP-8



Symbol	Min	Typ	Max
A	-	-	5.330
A1	0.380	-	-
A2	2.920	3.300	4.950
b	0.360	0.460	0.560
b2	1.140	1.520	1.780
c	0.200	0.250	0.360
D	9.020	9.270	10.16
E	7.620	7.870	8.260
E1	6.100	6.350	7.110
e	-	2.540	-
eA	-	7.620	-
eB	-	-	10.92
L	2.920	3.300	3.810



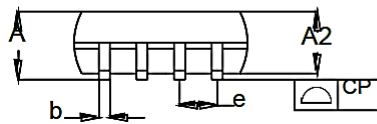
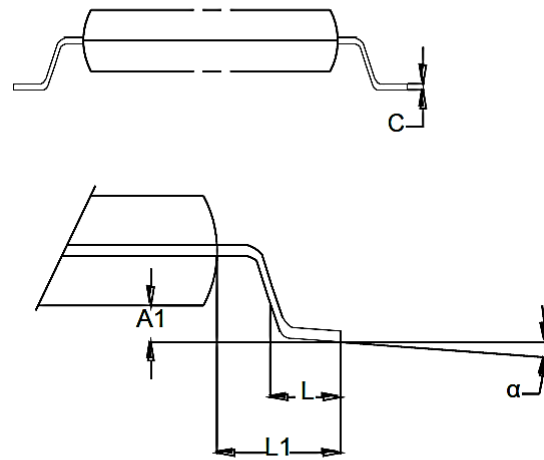
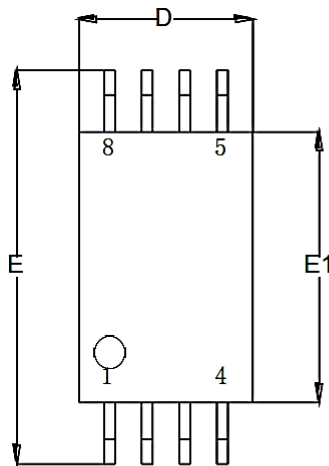
SOP-8



Symbol	Min	Typ	Max
A	-	-	1.750
A1	0.100	-	0.250
A2	1.250	-	-
b	0.280	-	0.480
c	0.170	-	0.230
D	4.800	4.900	5.000
E	5.800	6.000	6.200
E1	3.800	3.900	4.000
e	-	1.270	-
h	0.250	-	0.500
k	0°	-	8°
L	0.400	-	1.270
L1	-	1.040	-



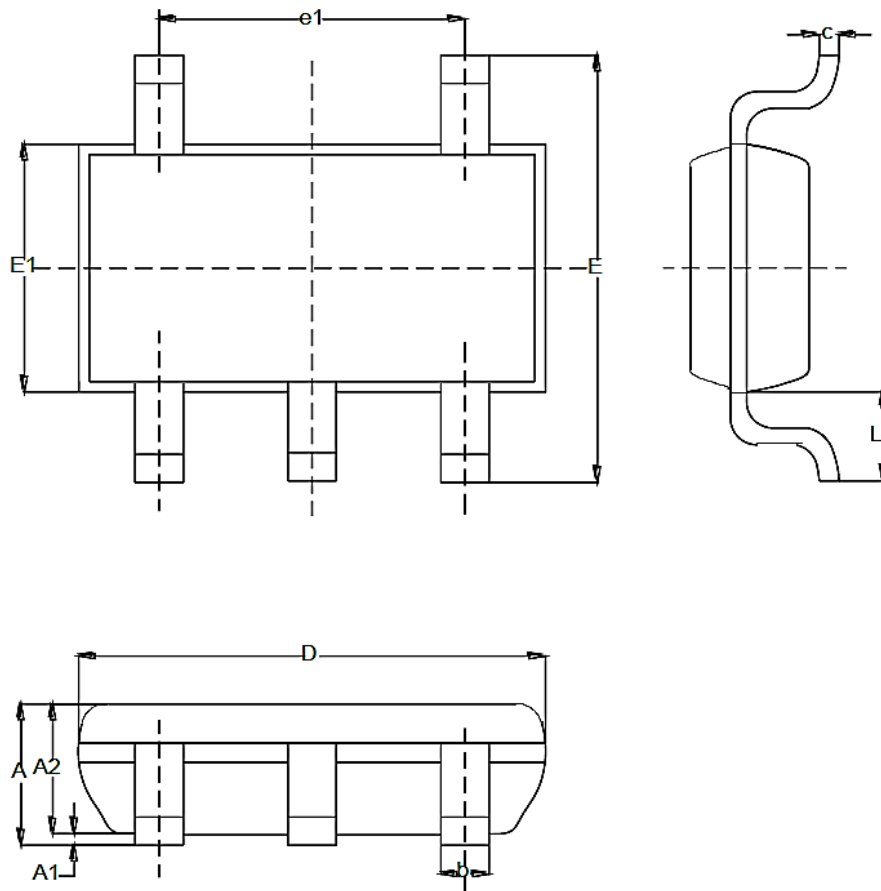
TSSOP-8



Symbol	Min	Typ	Max
A	-	-	1.200
A1	0.050	-	0.150
A2	0.800	1.000	1.050
b	0.190	-	0.300
c	0.090	-	0.200
CP	-	-	0.100
D	2.900	3.000	3.100
e	-	0.650	-
E	6.200	6.400	6.600
E1	4.300	4.400	4.500
L	0.450	0.600	0.750
L1	-	1.000	
α	0°	-	8°



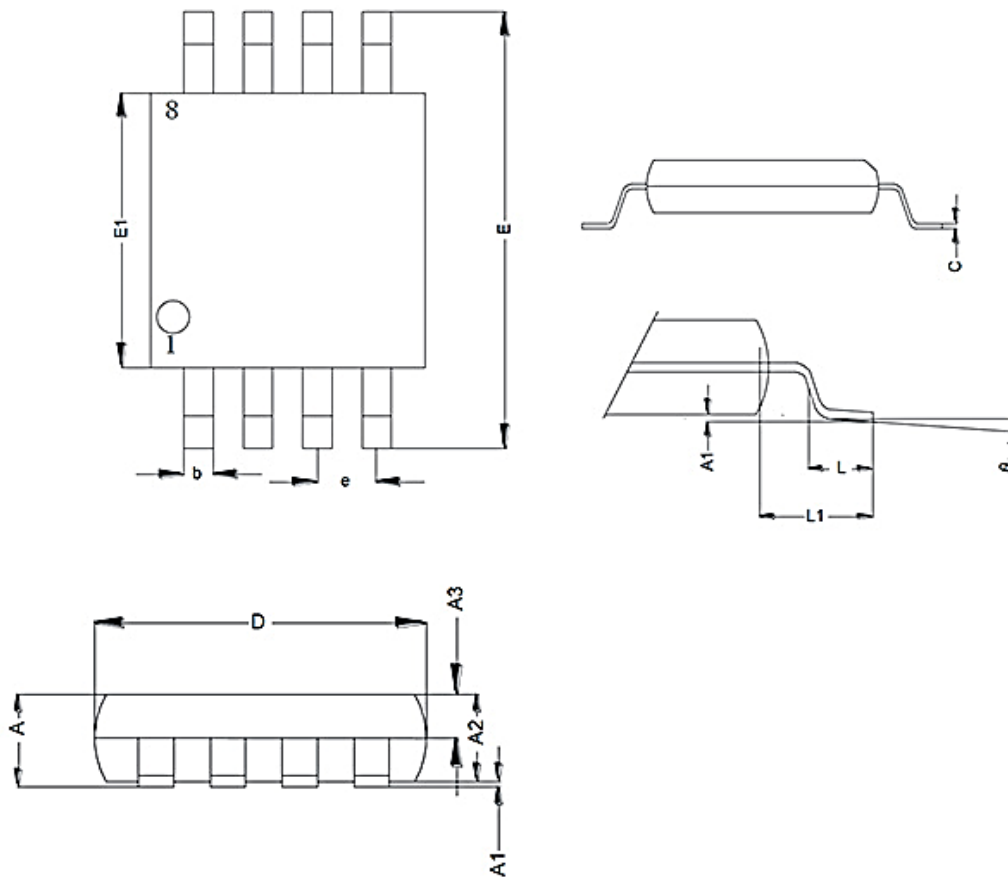
SOT23-5



Symbol	Min	Typ	Max
A	1.000	-	1.250
A1	0.030	-	0.090
A2	1.050	-	1.150
c	0.080	-	0.200
D	0.290BSC		
E	2.800BSC		
E1	1.600BSC		
e	0.950BSC		
e1	1.900BSC		
L1	0.600REF		
b	0.300	-	0.450



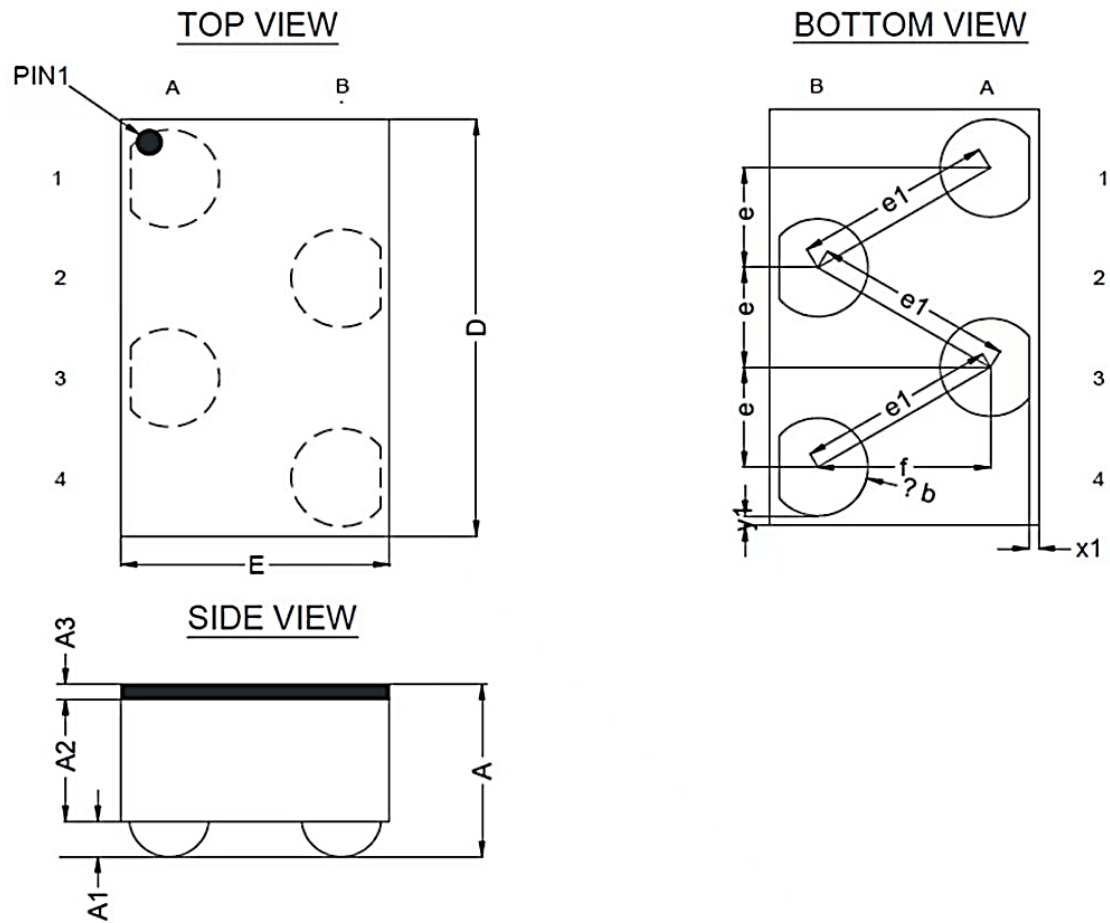
MSOP-8



Symbol	Min	Typ	Max
A	-	-	1.100
A1	0.050	-	0.150
A2	0.750	0.850	0.950
A3	0.300	0.350	0.400
b	0.280	-	0.360
c	0.150	-	0.190
D	2.900	3.000	3.100
E	4.700	4.900	5.100
E1	2.900	3.000	3.100
e	-	0.650	-
L	0.400	-	0.700
L1	-	0.950	-
θ	0°	-	8°



WLCSP-4(Ball Pitch 320um*320um)

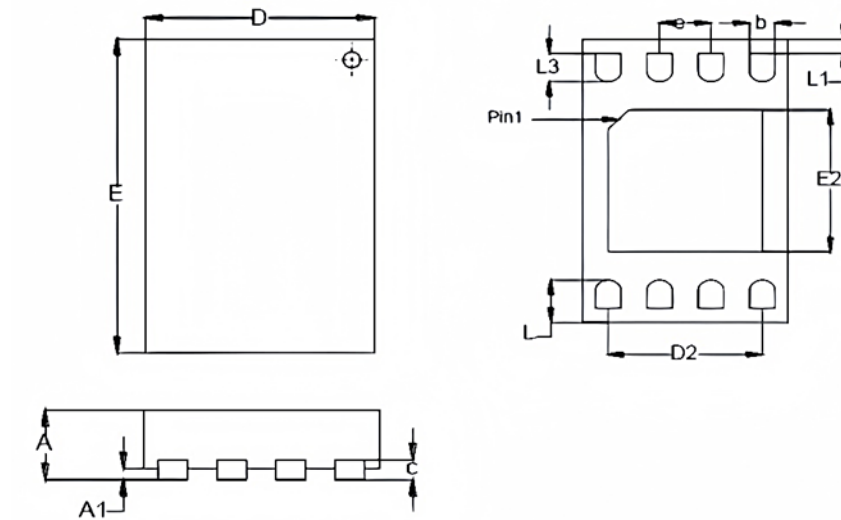


	1	2	3	4
A	VCC		SDA	
B		SCL		GND

SYMBOL	MIN	TYP	MAX	NOTE
A	0.255	0.280	0.305	
A1	0.050	0.055	0.060	
A2	0.180	0.200	0.220	
A3	0.025BSC			
D	0.692	0.722	0.752	
e	-	0.163	-	
y1	0.036REF			
E	0.439	0.469	0.499	
e1	-	0.320	-	
x1	0.035REF			
b	-	0.160	-	
f	-	0.275	-	



UDFN-8



Symbol	Min	Typ	Max
A	0.450	0.500	0.550
A1	0.000	0.020	0.050
b	0.180	0.250	0.300
D	1.900	2.000	2.100
D2(rev MC)	1.400	1.500	1.600
E	2.900	3.000	3.100
E2(rev MC)	1.500	1.600	1.700
e	-	0.500	-
L	0.300	0.400	0.500
L1	-	-	0.150
L3	0.300	-	-
c	0.100	0.150	0.200

Ordering information

Device Name	Voltage Range	Package	Temp. Range	Max. Clock Frequency
QN24C64D-SSHM-T	1.8V~5.5V	SOP-8	-40°C~125°C	1MHz ⁽¹⁾
QN24C64D-STUM-T	1.8V~5.5V	SOT23-5	-40°C~125°C	1MHz ⁽¹⁾
QN24C64D-XHM-T	1.8V~5.5V	TSSOP-8	-40°C~125°C	1MHz ⁽¹⁾

Note 1: 400 kHz for VCC < 2.5V.