

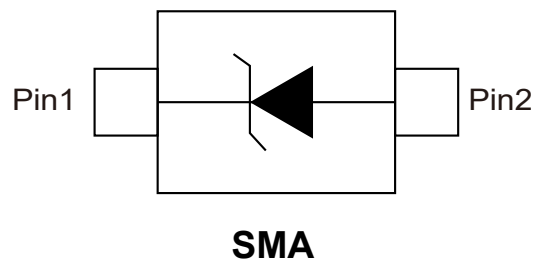
1.Features

- Schottky barrier rectifier
- Guardring protection
- Low forward voltage
- Reverse energy tested
- High current capability
- Extremely low thermal resistance

2.Mechanical Data

- Case: SMA molded plastic body 1111
- Polarity: Color band denotes cathode end
- Mounting position: ANY
- Weight: 0.002 ounces, 0.064 gram

3.Pinning information





4. Maximum Ratings And Electrical Characteristics

Parameter		Symbols	SS 12A	SS 13A	SS 14A	SS 15A	SS 16A	SS 18A	SS 110A	SS 115A	SS 120A	Units
Maximum repetitive peak reverse voltage		V _{RRM}	20	30	40	50	60	80	100	150	200	Volts
Maximum RMS voltage		V _{RMS}	14	21	28	35	42	56	70	105	140	Volts
Maximum DC blocking voltage		V _{DC}	20	30	40	50	60	80	100	150	200	Volts
Maximum average forward rectified current 0.375"(9.5mm) lead length (See Fig.1)		I _(AV)	1									Amps
Peak forward surge current 8.3ms single half sine-wave superimposed on rated load (JEDEC method)		I _{FSM}	30									Amps
Maximum instantaneous forward voltage at 1.0 A(Note 1)		V _F	0.45	0.55		0.7		0.85		0.95		Volts
Maximum instantaneous reverse current at rated DC blocking voltage	T _A =25°C	I _R	0.5						0.2		mA	
	T _A =100°C		10				5		2			
Typical junction capacitance(Note 1)		C _J	110			90						pF
Typical thermal resistance (Note 2)		R _{θJA}	88									°C/W
Junction temperature range		T _J	-50 to 125					-50 to 150				°C
Storage temperature range		T _{STG}	-50 to 150									°C

Ratings at 25 C ambient temperature unless otherwise specified.

Single phase half-wave 60Hz, resistive or inductive load, for capacitive load current derate by 20%

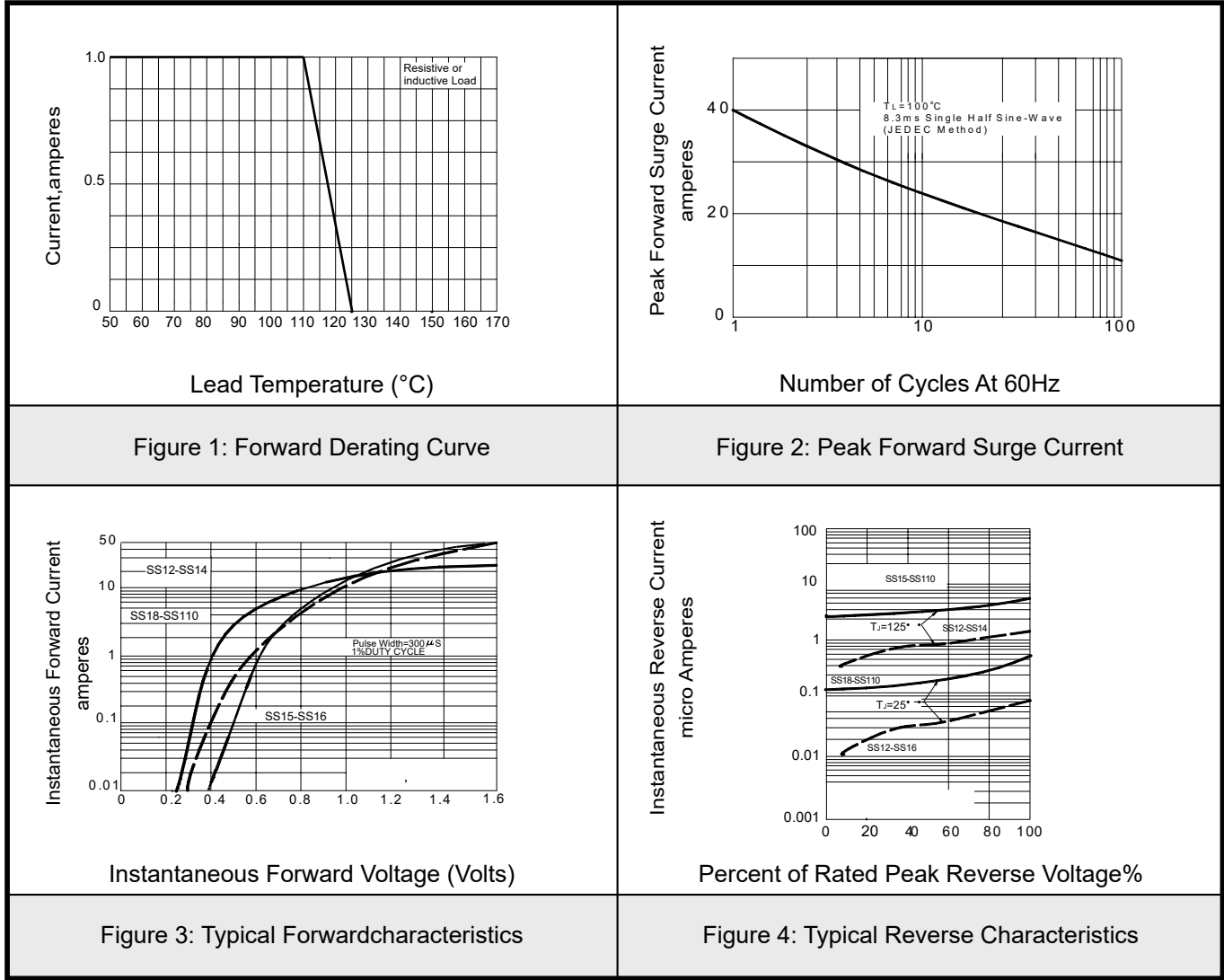
Notes:

1. Measured at 1MHz and applied reverse voltage of 4.0V D.C.

2. P.C.B. mounted with 0.2x0.2"(5.0x5.0mm) copper pad areas.

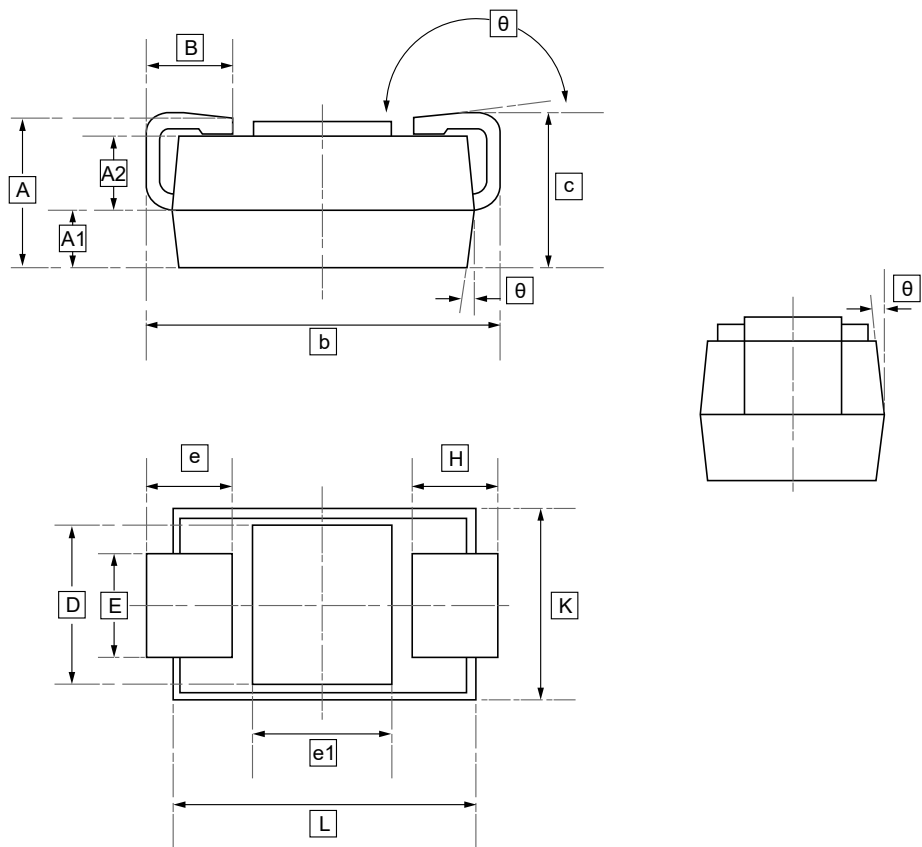


5. Typical characteristic





6.SMA Package Outline Dimensions



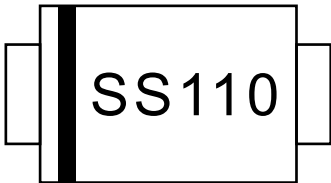
DIMENSIONS (mm are the original dimensions)

Symbol	A	A1	A2	B	b	c	D	E	e1	L	K	θ
Min	1.95	0.77	0.97	1.10	4.95	2.00	2.09	1.38	1.95	4.25	2.60	0°
Max	2.05	0.83	1.03	1.30	5.15	2.20	2.19	1.42	2.05	4.35	2.65	5°

Notes: e-H<0.15mm



7 .Ordering information



Order Code	Package	Base QTY	Delivery Mode
UMW SS12A	SMA	2000	Tape and reel
UMW SS13A	SMA	2000	Tape and reel
UMW SS14A	SMA	2000	Tape and reel
UMW SS15A	SMA	2000	Tape and reel
UMW SS16A	SMA	2000	Tape and reel
UMW SS18A	SMA	2000	Tape and reel
UMW SS110A	SMA	2000	Tape and reel
UMW SS115A	SMA	2000	Tape and reel
UMW SS120A	SMA	2000	Tape and reel



8.Disclaimer

UMW reserves the right to make changes to all products, specifications. Customers should obtain the latest version of product documentation and verify the completeness and currency of the information before placing an order.

When applying our products, please do not exceed the maximum rated values, as this may affect the reliability of the entire system. Under certain conditions, any semiconductor product may experience faults or failures. Buyers are responsible for adhering to safety standards and implementing safety measures during system design, prototyping, and manufacturing when using our products to prevent potential failure risks that could lead to personal injury or property damage.

Unless explicitly stated in writing, UMW products are not intended for use in medical, life-saving, or life-sustaining applications, nor for any other applications where product failure could result in personal injury or death. If customers use or sell the product for such applications without explicit authorization, they assume all associated risks.

When reselling, applying, or exporting, please comply with export control laws and regulations of China, the United States, the United Kingdom, the European Union, and other relevant countries, regions, and international organizations.

This document and any actions by UMW do not grant any intellectual property rights, whether express or implied, by estoppel or otherwise. The product names and marks mentioned herein may be trademarks of their respective owners.