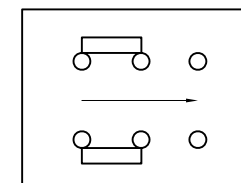
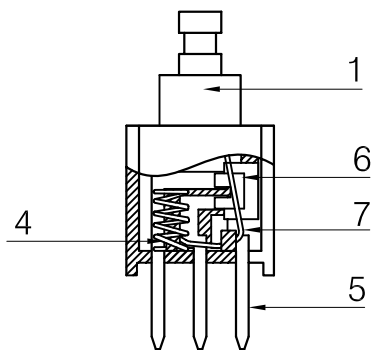
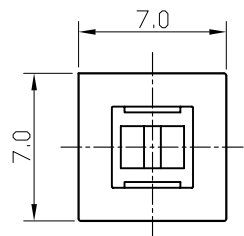
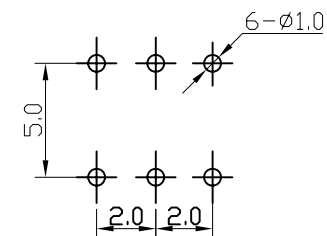
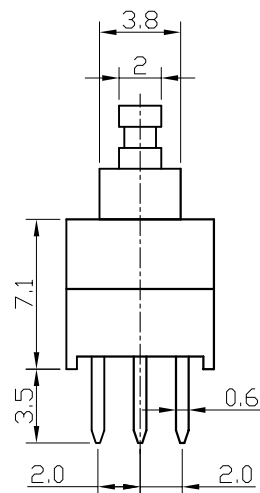
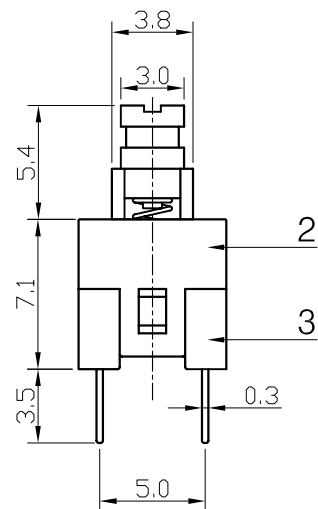


ABIDE BY WEEE & ROHS



Circuit Diagram



PCB Layout Recommended

⑦	Hookpin		1	Corbon Steel						
⑥	Contact		2	Copper-Silver Composite						
⑤	Terminal		6	Brass/PBT	Plating silver					
④	Spring		1	SWC						
③	Base		1	PBT	Black	UL 94HB				
②	Cover		1	POM	White	UL 94HB				
①	Keystoke		1	POM	Blue	UL 94HB				
ITEM	PART NAME	TER'NO.	QTY.	MATERIAL	FINISHING	REMARK				
APPROVALS			DATE		浙江创都电子科技有限公司					
DRAWN	wujianping	2005.10.24								
CHECKED	Songyu	2005.10.24		TITLE:	7.0自锁按键开关					
APPROVALS	Songyu	2005.10.24		PART NO.	KFC-22Z77-GT-PBTK					
TOLERANCES ARE			30<L	±0.30	ANGLE	UNIT: mm				
			10<L≤30	±0.20			SCALE: 3:1	PROJ:		
			5<L≤10	±0.15					DRAWING NO.	SHEET 1 OF 1
			L≤5	±0.10						
			±2°							

	A		NEW			
ECN NO.	REV.	DATE.	DESCRIPTION.	CHANGE.	CHECK.	APPRO.