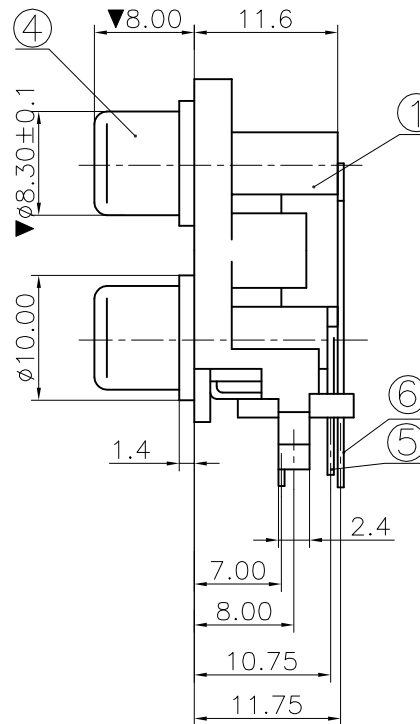
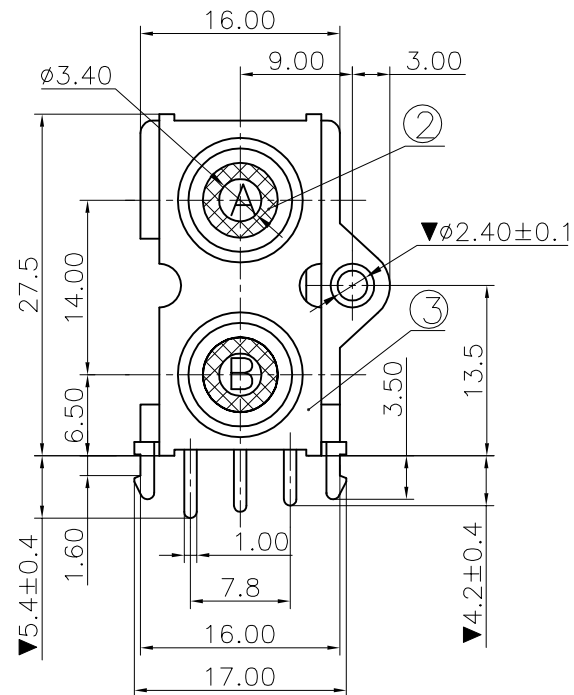


REV.	ECN NO.	MODIFIED MARK	APPROVED
B	_____		



NOTES:

ELECTRICAL:

1:RATED CURRENT: 1A Max.

2:RATED VOLTAGE: 12V DC.

3:CONTACT RESISTANCE: 30 MILLIOHMS Max.

AFTER TESTING:100 MILLIOHMS Max.

4:INSULATION RESISTANCE: 100 MEGAOHMS Min.

5:DIELECTRIC WITHSTANDING VOLTAGE: 500 VAC Min.

MECHANICAL:

1:INSERTION FORCE: 3N-30N.

2:WITHDRAWAL FORCE: 3N-30N.

3:DURRABILITY: 500 CYCLES.

ENVIRONMENTAL:

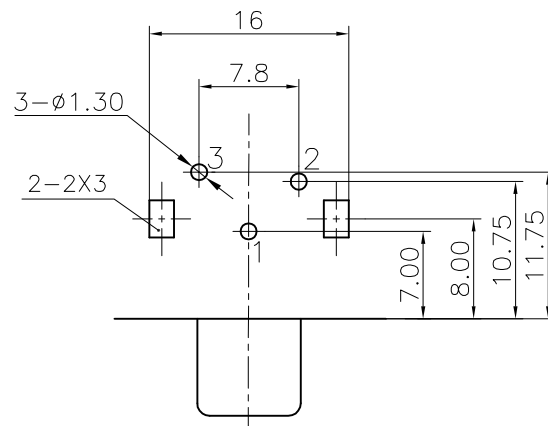
TEMPERATURE RANGE: -20°C TO 60°C.

MARK "▼" AS THE KEY CONTROL SIZE.

PIN POSITION AND SIZE OK IF FIT PCB BOARD

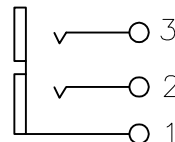
COLOR TABLE

CODE	A	B
COLOR	WHITE	RED




PCB LAYOUT

TOP VIEW



SCHEMATIC

⑥	TERMINAL-B	1	BRASS t=0.4	CuSn PLATED	RoHS 2.0
⑤	TERMINAL-A	1	BRASS t=0.4	CuSn PLATED	
④	SOCKET	1	BRASS t=0.36	CuSn PLATED	
③	COVER	1	ABS	BLACK	
②	WASHER	2	PBT	SEE COLOR TABLE	
①	HOUSE	1	PBT	WHITE	
NO.	PART NAME	Q'TY	MATERIAL	FINISH/COLOR	REMARK
ANGLE		±5°	MODEL NAME: (PART NO.) AV-209-WR		浙江创都电子科技有限公司
63 < L		±0.5			
16 < L ≤ 63		±0.4			
4 < L ≤ 16		±0.3			
L ≤ 4		±0.2	MAT'L: DESIGN: 08/28'23 TITLE: RCA PIN JACK		
TOL TABLE:		See table	FINISH: CHECKED: 08/28'23	DWG NO.:	REV.: B
		See table	Q'TY:/	APPROVED 08/28'23	UNIT: mm VIEW:  SCALE: 5:1 SHEET: 1/1 SIZE: A3