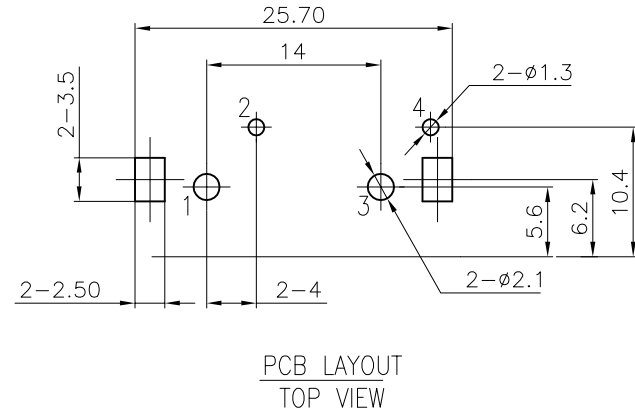
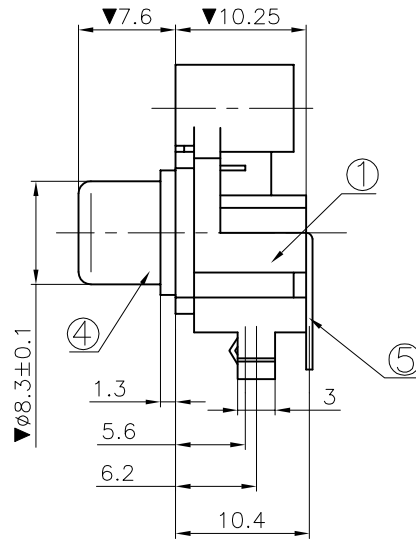
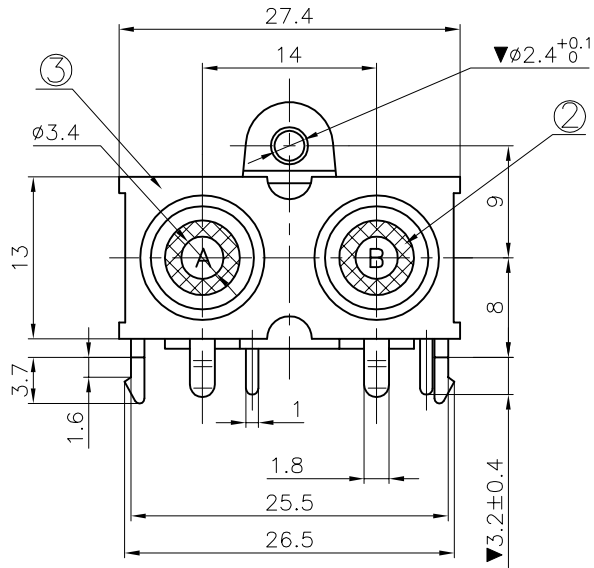
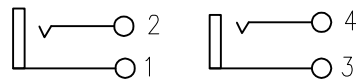


REV.	ECN NO.	MODIFIED MARK	APPROVED
B			



COLOR TABLE

CODE	A	B
COLOR	WHITE	RED



SCHEMATIC

NOTES:

ELECTRICAL:

1:RATED CURRENT: 1A Max.

2:RATED VOLTAGE: 12V DC.

3:CONTACT RESISTANCE: 30 MILLIOHMS Max.

AFTER TESTING:100 MILLIOHMS Max.

4:INSULATION RESISTANCE: 100 MEGAOHMS Min.

5:DIELECTRIC WITHSTANDING VOLTAGE: 500 VAC Min.

MECHANICAL:

1:INSERTION FORCE: 3N-30N.

2:WITHDRAWAL FORCE: 3N-30N.

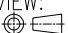
3:DURRABILITY: 500 CYCLES.

ENVIRONMENTAL:

TEMPERATURE RANGE: -20°C TO 60°C.

MARK"▼"AS THE KEY CONTROL SIZE.

PIN POSITION AND SIZE OK IF FIT PCB BOARD

⑤	TERMINAL	2	BRASS t=0.5	CuSn PLATED	RoHS 2.0				
④	SOCKET	2	BRASS	CuSn PLATED					
③	COVER	1	ABS	BLACK					
②	WASHER	2	ABS	SEE COLOR TABLE					
①	HOUSE	1	ABS	WHITE					
NO.	PART NAME		Q'TY	MATERIAL	FINISH/COLOR	REMARK			
ANGLE		±5°	MODEL NAME: (PART NO.) AV-210-WR		浙江创都电子科技有限公司				
63 < L		±0.5							
16 < L ≤ 63		±0.4							
4 < L ≤ 16		±0.3							
L ≤ 4		±0.2							
TOL TABLE:			MAT'L: See table	DESIGN: 11/13'24	TITLE: RCA PIN JACK				
			FINISH: See table	CHECKED: 11/13'24	DWG NO.:		REV.: B		
			Q'TY:/	APPROVED: 11/13'24	UNIT: mm	VIEW: 	SCALE: 5:1	SHEET: 1/1	SIZE: A3