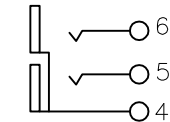
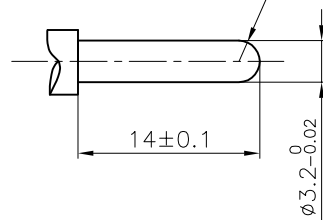


PCB LAYOUT  
TOP VIEW



SCHEMATIC

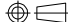
GAUGE PLUG: SR1.6



COLOR TABLE

CODE	A	B
COLOR	WHITE	RED

NOTES:  
ELECTRICAL:  
1:RATED CURRENT: 1A Max.  
2:RATED VOLTAGE: 12V DC.  
3:CONTACT RESISTANCE: 30 MILLIOHMS Max.  
AFTER TESTING:100 MILLIOHMS Max.  
4:INSULATION RESISTANCE: 100 MEGAOHMS Min.  
5:DIELECTRIC WITHSTANDING VOLTAGE: 500 VAC Min.  
MECHANICAL:  
1:INSERTION FORCE: 3N-30N.  
2:WITHDRAWAL FORCE: 3N-30N.  
3:DURRABILITY: 500 CYCLES.  
ENVIRONMENTAL:  
TEMPERATURE RANGE: -20°C TO 60°C.  
MARK"▼"AS THE KEY CONTROL SIZE.  
PIN POSITION AND SIZE OK IF FIT PCB BOARD

⑥	TERMINAL—C	1	BRASS t=0.35	CuSn PLATED	RoHS 2.0				
⑤	TERMINAL—B	1	BRASS t=0.35	CuSn PLATED					
④	TERMINAL—A	1	BRASS t=0.4	CuSn PLATED					
③	SOCKET	2	BRASS t=0.36	CuSn PLATED					
②	WASHER	2	PBT	SEE COLOR TABLE					
①	HOUSE	1	ABS	BLACK					
NO.	PART NAME		Q'TY	MATERIAL	FINISH/COLOR	REMARK			
ANGLE		±5°	MODEL NAME: AV-207-WR-BK (PART NO.)		浙江创都电子科技有限公司				
63 < L		±0.5							
16 < L ≤ 63		±0.4							
4 < L ≤ 16		±0.3							
L ≤ 4		±0.2	MAT'L: See table	DESIGN: 12/01'23	TITLE: RCA PIN JACK				
TOL TABLE:			FINISH: See table	CHECKED: 12/01'23	DWG NO.:		REV.: B		
			Q'TY:/	APPROVED: 12/01'23	UNIT: mm	VIEW: 	SCALE: 5:1	SHEET: 1/1	SIZE: A3