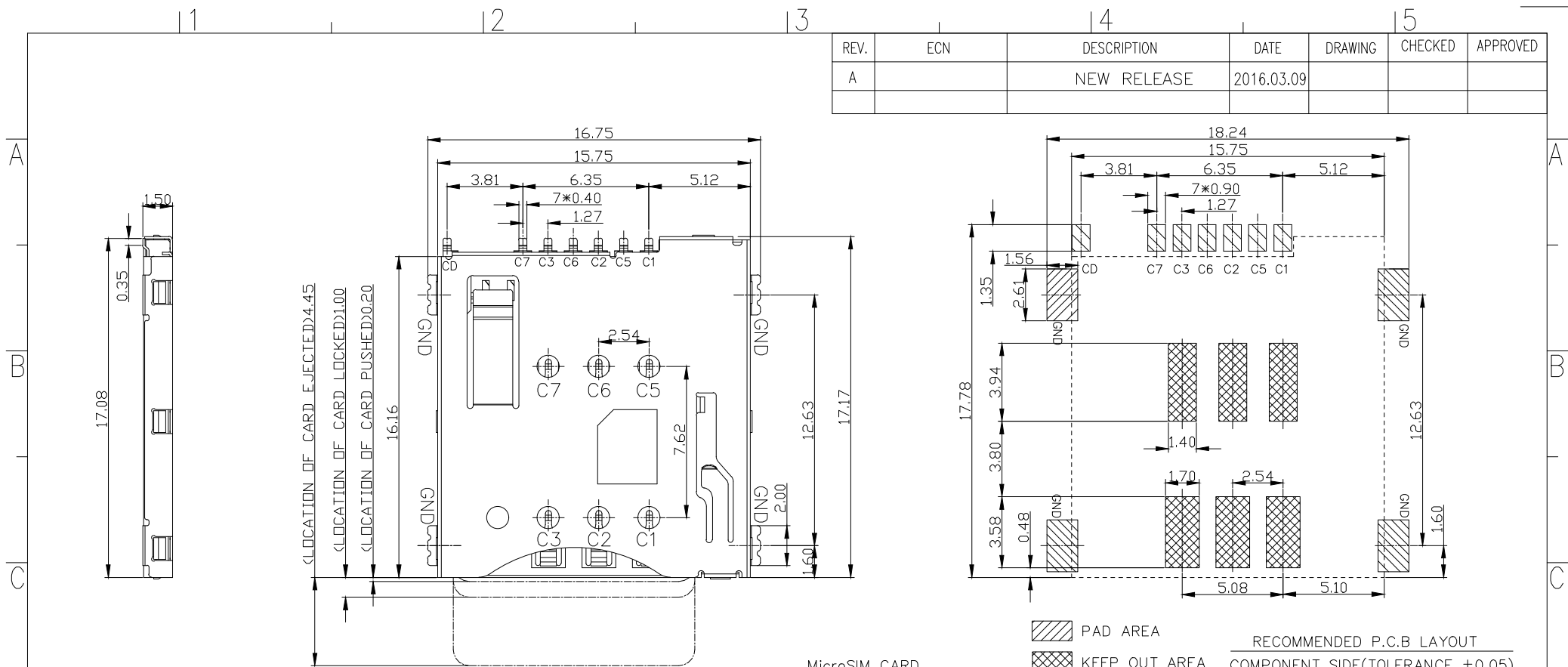


REV.	ECN	DESCRIPTION	DATE	DRAWING	CHECKED	APPROVED
A		NEW RELEASE	2016.03.09			



TECHNICAL CHARACTERISTICS

1.General Characteristics

Dimensions: 15.75LX17.17WX1.50H mm

Weight: Approx 0.4±0.1g

Durability: 1500 cycles min.

2.Electrical Characteristics

Contact resistance;

Date Contact: 150mΩ max

CD Switch: 500mΩ max

Insulation resistance: >1000MΩ/500V DC

3.Solderability

Vapor phase: 215°C, 30sec. Max

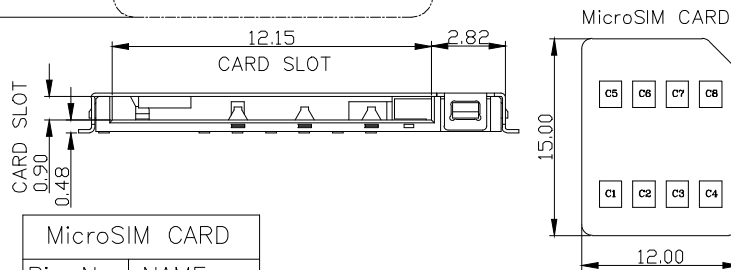
IR reflow: 250°C, 5sec. Max

Manual soldering: 370°C, 3sec. Max

4.Environmental Characteristics

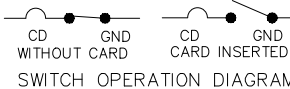
Operating temperature: -40°C~+85°C

Operating humidity: 10%~+95%RH



Pin No.	NAME
C1	VCC
C2	RST
C3	CLK
C4	Reserved
C5	GND
C6	VPP
C7	I/O
C8	Reserved

ELECTRIC FUNCTION	DETECT SWITCH
WITHOUT CARD	CLOSED
CARD INSERTED	OPEN

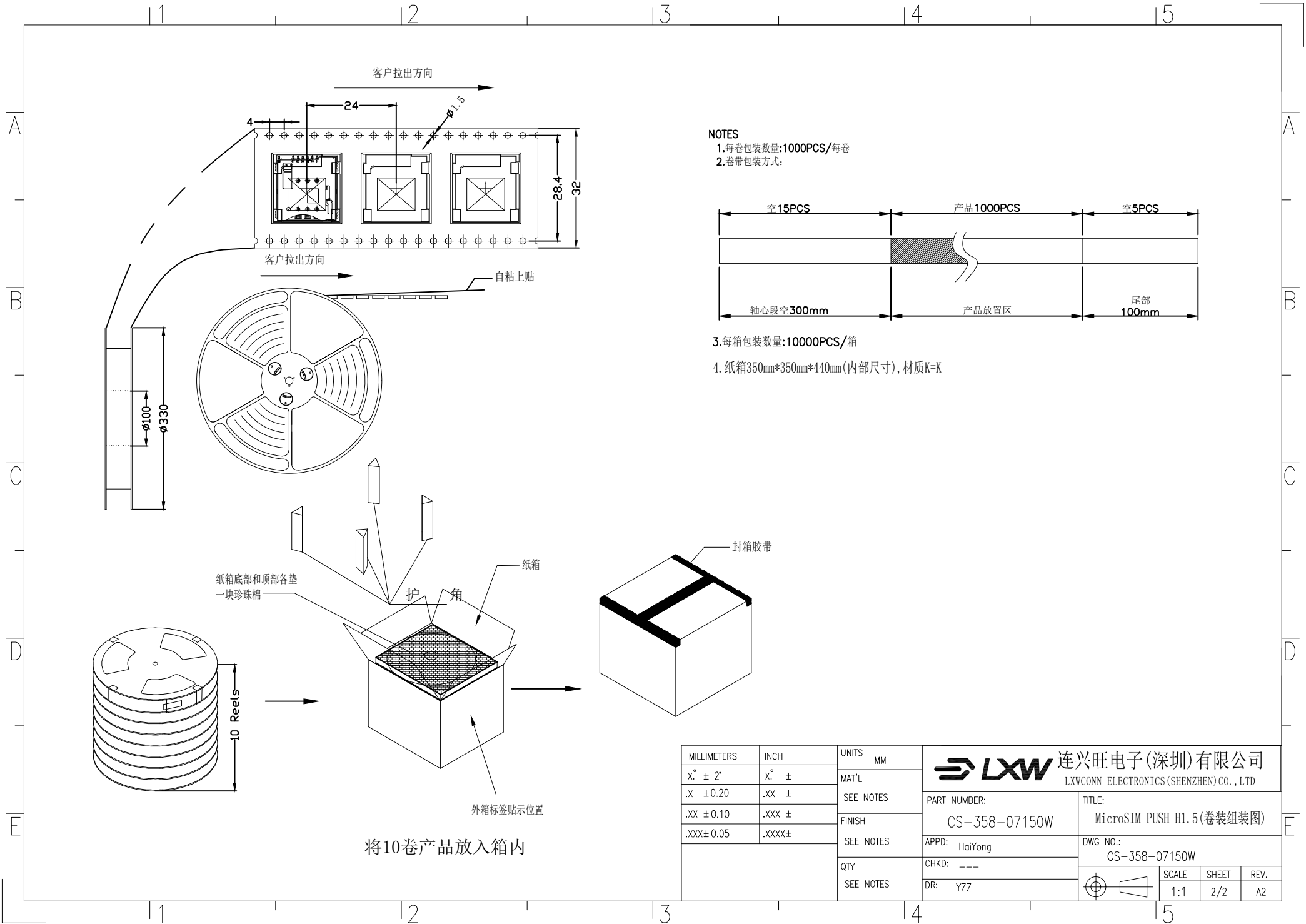


ITEM	PART NAME	Q'TY	MATERIAL	FINISH
1	HOUSING	1	Hi-temp Thermoplastic	Black UL94V-0
2	DATA CONTACT	6	Copper Alloy	Contact area: Gold plated
3	CD SWITCH	1	Copper Alloy	Contact area: Gold plated
4	SHELL	1	Stainless Steel	SMT area: Gold plated
5	COIL SPRING	1	SWP	
6	HEART CAM	1	Hi-temp Thermoplastic	Black UL94V-0
7	CAM PIN	1	Stainless Steel	

MILLIMETERS	INCH	UNITS
X° ± 2'	X° ± 2'	MM
.X ± 0.30	.XX ± 0.012	MAT'L
.XX ± 0.25	.XXX ± 0.008	SEE NOTES
.XXX ± 0.15	.XXXX ± 0.004	FINISH
		SEE NOTES
		QTY
		SEE NOTES

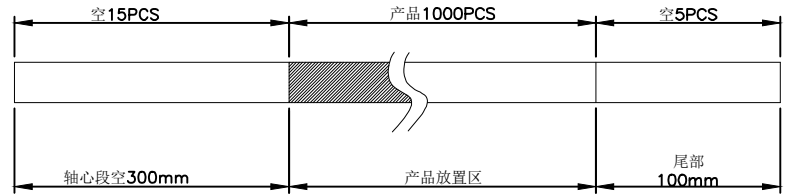
LXW 连兴旺电子(深圳)有限公司
LXWCONN ELECTRONICS (SHENZHEN) CO., LTD

PART NUMBER:	CS-358-07150W	TITLE:	Micro SIM PUSH H1.5
APPD:	Sean	DWG NO.:	CS-358-07150W
CHKD:		SCALE	1:1
DR:	Yang	SHEET	1
		REV.	A



NOTES

- 1. 每卷包装数量: 1000PCS/每卷
- 2. 卷带包装方式:



- 3. 每箱包装数量: 10000PCS/箱
- 4. 纸箱 350mm*350mm*440mm (内部尺寸), 材质K=K

纸箱底部和顶部各垫一块珍珠棉

护角

纸箱

封箱胶带

外箱标签贴示位置

将10卷产品放入箱内

MILLIMETERS	INCH	UNITS	LXW 连兴旺电子(深圳)有限公司		
X. ^o ± 2 ^o	X. ^o ±	MM	LXWCONN ELECTRONICS (SHENZHEN) CO., LTD		
.X ± 0.20	.XX ±	MAT'L	PART NUMBER:	TITLE:	
.XX ± 0.10	.XXX ±	SEE NOTES	CS-358-07150W	MicroSIM PUSH H1.5 (卷装组装图)	
.XXX ± 0.05	.XXXX ±	FINISH	APPD: HaiYong	DWG NO.:	
		SEE NOTES	CHKD: ---	CS-358-07150W	
		QTY	DR: YZZ	SCALE	SHEET
		SEE NOTES		1:1	2/2
				REV.	A2