

Features:

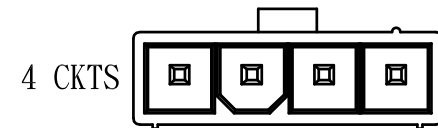
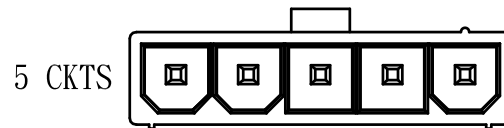
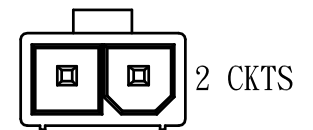
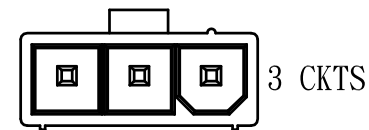
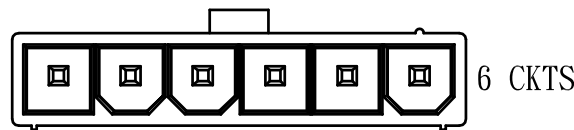
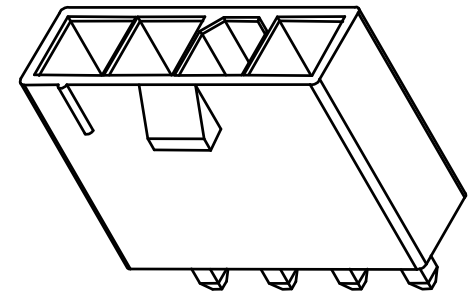
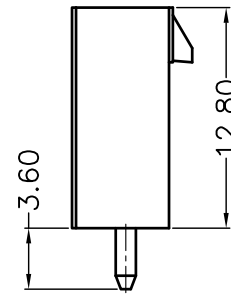
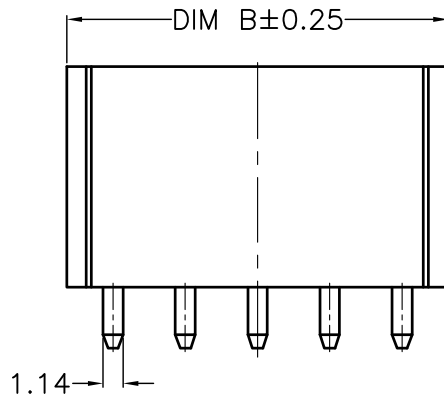
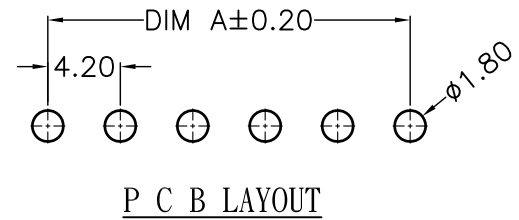
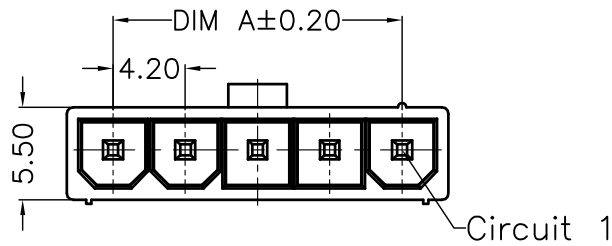
- 1. 02~06 circuits available;
- 2. Contact: Brass;
- 3. Material: PA66 UL94V-0 or UL94V-2;
- 4. Finished: Tin-plated;
- 5. Mates with H4200S12 Housing;
- 6. Color: Black/Natural(Clear)/Ivory;

Specification:

Current Rating: 7A AC/DC  
 Voltage rating: 600V AC(RMS) or 600V DC Max  
 Contact resistance: 15mΩ Max  
 Insulation resistance: 1000MΩ Min  
 Dielectric withstanding voltage: 1500V AC/minute  
 Ambient temperature rang: -25°C~85°C

Dimensional Information(mm)

Circuits	DIM A	DIM B	Circuits	DIM A	DIM B
02	4.20	9.60	05	16.80	22.20
03	8.40	13.80	06	21.00	26.40
04	12.60	18.00			



H4200S13-XX-XX  
 SERIES NO: \_\_\_\_\_ Color:  
 PIN Q' PY: \_\_\_\_\_ CB: Black  
 02~06 CN: Natural(Clear)  
 CI: Ivory

REV	Description	DATE	GENERAL TOLERANCES (unless specified)	UNITS	MM	DATE	2014-03-05
			X.X±0.4	SCALE	1:1	DRAWING	Liu zhi guo
			X.XX±0.25	REV	A	CHECKED BY	Li peng
			X.XXX±0.15	APPROVAL BY		OYSW	

**LXW** 连兴旺电子(深圳)有限公司  
 LXWCONN ELECTRONICS (SHENZHEN) CO., LTD

PRODUCT NAME: 4.2 mm vertical header  
 PART NUMBER: H4200S13-XX-XX