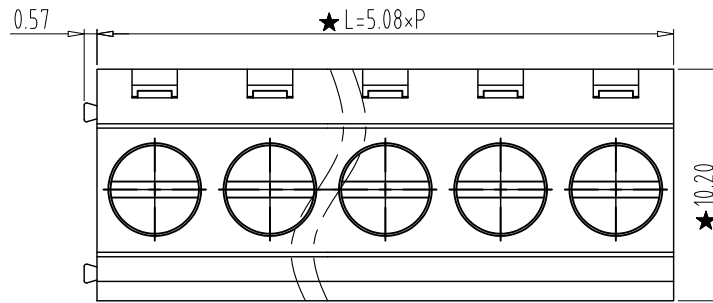
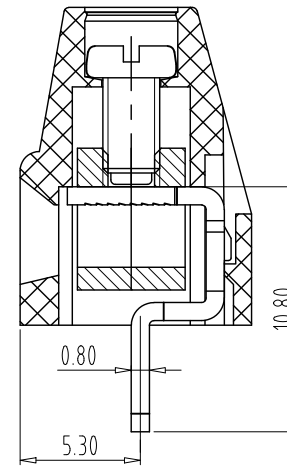
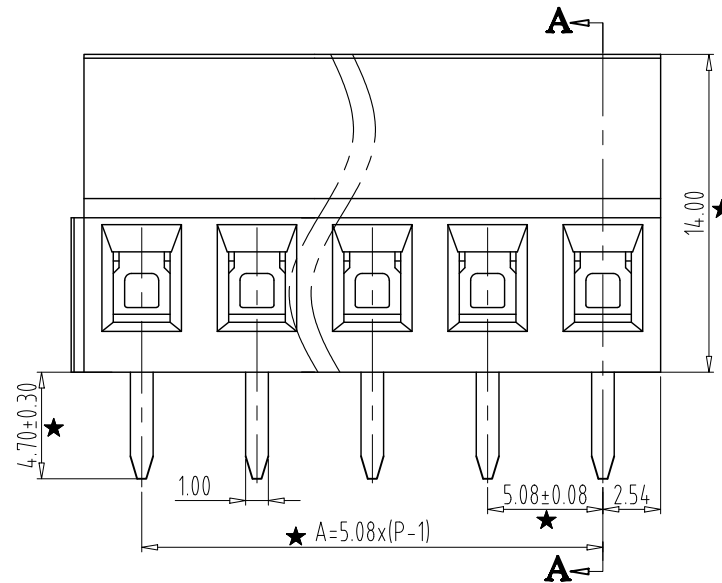
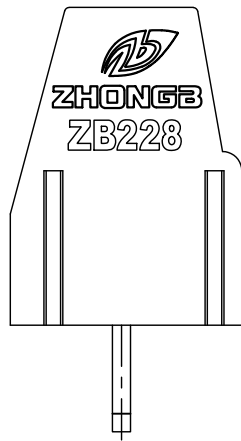


PCB LAYOUT

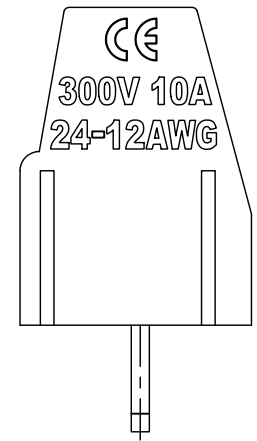


NOTES:

1. Rating:300V 10A;
2. Insulation Withstands Voltage: AC2000V/MIN;
3. Insulation Resistance: 500MΩ or more at DC500V
4. Using Temperature Range: -40°C/+105°C;
5. Screw Torque Vlaue:0.4N.m;
6. Suitable Electric Wire: 12-24AWG .
7. "★" is critical dimension to be controlled.



SECTION:A-A



Total Pitch Tolerances in mm										Nominal dimension range in mm										⊥	≡	—	//						
over 0	over 30	over 53	over 70	over 90	over 115	over 150	over 250	over 350	over 500	over 0	over 30	over 53	over 70	over 90	over 115	over 150	over 200	over 250	over 320	over 0	over 10	all	over 0	over 100	over 150				
to 30	to 53	to 70	to 90	to 115	to 150	to 250	to 350	to 500		to 30	to 53	to 70	to 90	to 115	to 150	to 200	to 250	to 320	to 10	to 10			to 100	to 150					
±0.18	±0.25	±0.30	±0.35	±0.40	±0.45	±0.60	±0.70	±0.85	±0.20	±0.25	±0.30	±0.35	±0.44	±0.55	±0.70	±0.80	±0.90	±0.2	0.3	0.3	0.3	0.2	0.3	0.3	0.5				

ITEM	NAME OF PART	NO. OF PART	Q'TY	MATERIAL	NOTE
DWG.	ZX	DATE	2020/05/10	SIZE A4	UNITS mm
CHK.		DATE		SCALE 3:1	128V-5.08
APP.		DATE		NAME LXW128V-5.08-NP	
连兴旺电子(深圳)有限公司 LXWCONN ELECTRONICS (SHENZHEN) CO., LTD.				DWGNO.	LXW128V-5.08-NP