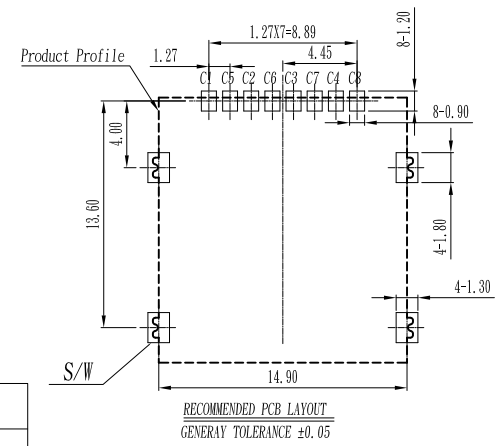
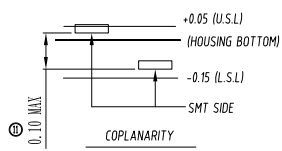
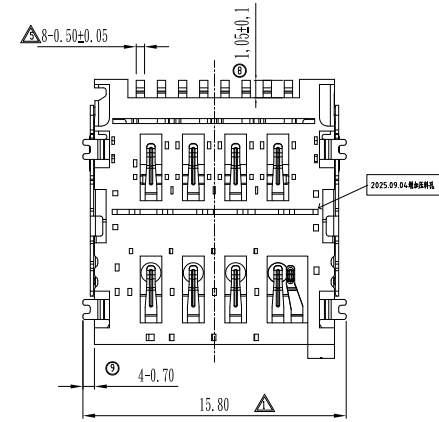
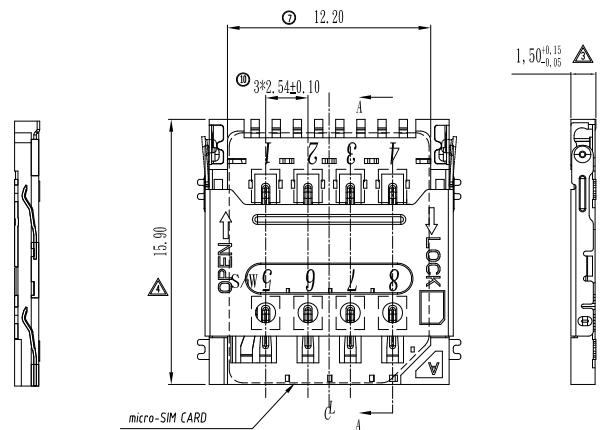


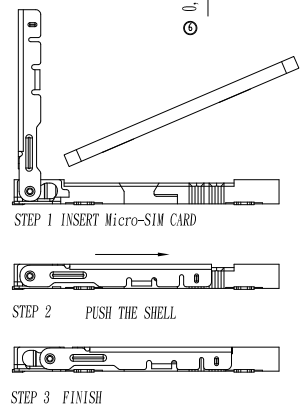


NOTES:

1. ELECTRICAL CHARACTERISTICS
  - 1-1. CONTACT RESISTANCE: 60 Milliohms Max
  - 1-2. INSULATION RESISTANCE: 1,000 Megohms Min.
  - 1-3. DIELECTRIC WITHSTANDING VOLTAGE: 500V AC FOR 1 MINUTE.
2. MECHANICAL CHARACTERISTICS
  - 2-1. OPERATION TEMPERATURE RANGE: -40°C~+70°C
  - 2-2. DURABILITY: 5000 CYCLES
3. MATERIAL:
  - 3-1. HOUSING: THERMOPLASTIC UL 94-V0
  - 3-2. TERMINAL: PHOSPHOR BRONZE, T=0.15
  - 3-3. SHELL: STAINLESS STEEL, T=0.20
4. FINISHED:
  - 4-1. TERMINAL: Ni PLATED UNDER, Au PLATED ON CONTACT AREA, G/F PLATED ON SOLDER TAIL



SECTION: A-A



SIM CARD	
Pin No.	NAME
C1	VCC
C2	RST
C3	CLK
C4	RESERVED
C5	GND
C6	VPP
C7	I/O
C8	RESERVED
S/W	Switch Pin

WITHDRAWAL CARD	INSERT CARD
GROUND PIN <input type="checkbox"/> Switch Pin (C5) (S/W)	GROUND PIN <input type="checkbox"/> Switch Pin (C5) (S/W)

NORMALLY OPEN IN THE CONNECTOR  
WHEN THE CARD INSERT, THE SWITCH IS CLOSE

**LXW** 连兴旺电子(深圳)有限公司  
LXWCONV ELECTRONICS (SHENZHEN) CO., LTD

<b>C</b>	PRODUCT SPEC. MICRO SIM CARD CONN
TITLE:	MICRO SIM H1.5 含侦测PIN 掀盖式
PART NO.	CS-234-09150
FILE NAME.	
SCALE	UNIT: mm A4  SHEET: of

工程变更通知单号 ECN(DCN) NO.	版次 REV	日期 DATE	说明 DESCRIPTION	改变 CHANGE	承认 APPRO.	设计 DESIGN	Nicolas	JEY	
	<b>B</b>	2025.09.04				设计	Nicolas	JEY	
	<b>A</b>	2016.10.10	新发行			校阅	Nicolas		
						承认			
GENERAL TOLERANCE UNLESS OTHERWISE NOTED									

由 Autodesk 教育版产品制作

由 Autodesk 教育版产品制作