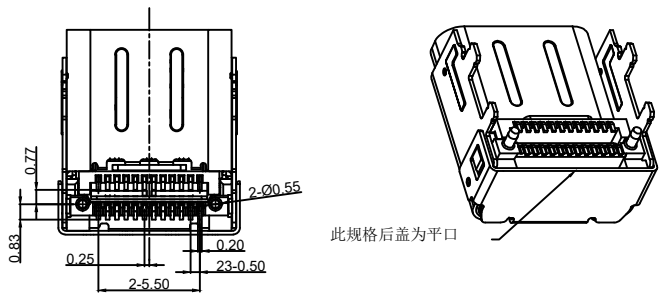
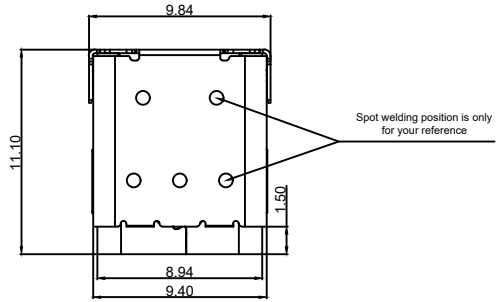
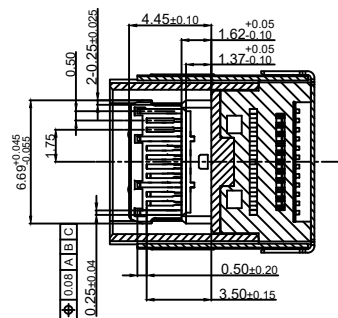
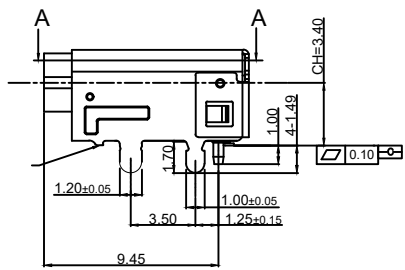
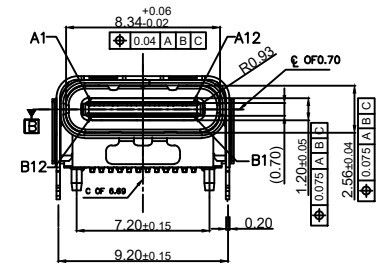


标记 MARK	ECN编号/变更内容 ECN NO/DEFINITION	修改 REVISE	日期 DATE	核准 APPROVE

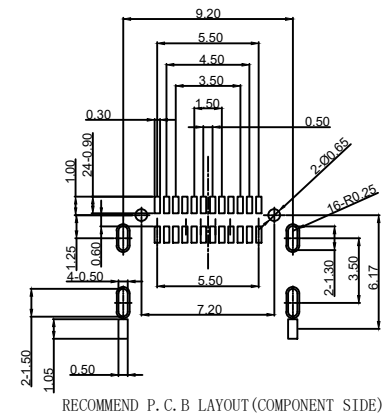
Pin No	Signal Name	Mating Sequence	Pin No	Signal Name	Mating Sequence
A1	GND	First	B12	GND	First
A2	TX1+	Second	B11	RX1+	Second
A3	TX1-	Second	B10	RX1-	Second
A4	Vaus	First	B9	Vaus	First
A5	CC1	Second	B8	SBU2	Second
A6	D+	Second	B7	D-	Second
A7	D-	Second	B6	D+	Second
A8	SBU1	Second	B5	CC2	Second
A9	Vaus	First	B4	Vaus	First
A10	RX2-	Second	B3	TX2-	Second
A11	RX2+	Second	B2	TX2+	Second
A12	GND	First	B1	GND	First
SHELL	GND	First			



此规格后盖为平口



SECTION A-A



RECOMMEND P. C. B LAYOUT (COMPONENT SIDE)

- NOTES:
- MATERIAL :SEE TABLE
  - COPLANARITY : 0.10 Max.
  - ELECTRICAL CHARACTERISTICS  
 LOW LEVEL CONTACT RESISTANCE: 40mΩ Max  
 INSULATION RESISTANCE:100MΩ MIN  
 DIELECTRIC WITHSTANDING VOLTAGE:100 VAC:  
 CONTACT CURRENT RATING:5A Max
  - MECHANICAL CHARACTERISTICS  
 INSERTION FORCE: 5~20N  
 EXTRACTION FORCE: 8~20N  
 AFTER DURABILITY EXTRACTION FORCE: 6~20N
  - DURABILITY: 10000 CYCLES
  - PACKAGING TYPE: CARRIER TAPE.
  - SALT SPRAY : 24 HOURS

3	外壳	不锈钢	镀镍	
2	接触	铜	镀金	
1	基座	LCP	黑色	
序号	品名	材质	电镀/颜色	备注

	深圳市虹成电子有限公司 品名 TITLE: TYPE-C母座 料号 PART NO: HC-TYPE-C-24P-G004		
	GENERAL TOLERANCES (UNLESS SPECIFIED)	比列 SCALE: 1:1 单位 UNIT: MM 张数 PART NO: 1 OF 1 版本 REV: A	
X. ± 0.5    .X° ± 2° .X ± 0.3    .XX° ± 1° .XX ± 0.1    .XXX° ± 0.5° .XXX ± 0.05			