

FEATURES

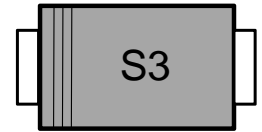
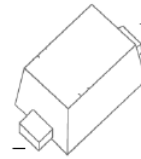
- Small package
- Low forward voltage
- Low reverse current

VOLTAGE RANGE

40 Volts

CURRENT

100mA



SOD-523

MAXIMUM RATINGS AND ELECTRICAL CHARACTERISTICS

Absolute Maximum Ratings ($T_a = 25\text{ }^\circ\text{C}$)

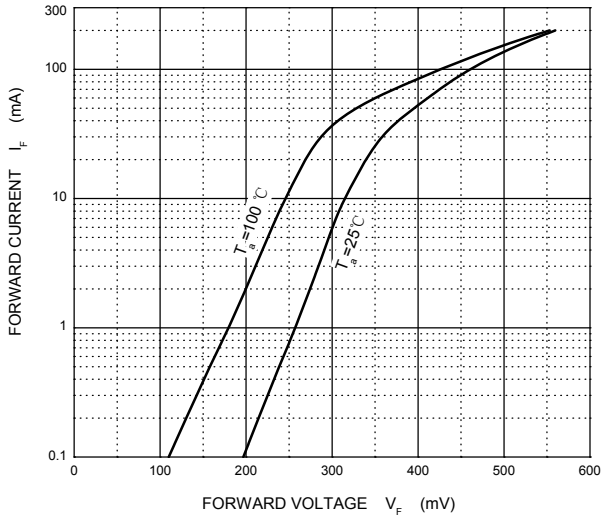
Parameter	Symbol	Limit	Unit
Peak reverse voltage	V_{RM}	45	V
DC reverse voltage	V_R	40	V
Maximum (peak) forward current	I_{FM}	300	mA
Average forward current	I_o	100	mA
Non-repetitive Peak Forward Surge Current@ $t=8.3\text{ms}$	I_{FSM}	1000	mA
Power dissipation	P_D	150	mW
Operating Junction Temperature Range	T_j	-40 ~ +125	$^\circ\text{C}$
Storage Temperature Range	T_{stg}	-55 ~ +150	$^\circ\text{C}$

Electrical Ratings @ $T_a=25\text{ }^\circ\text{C}$

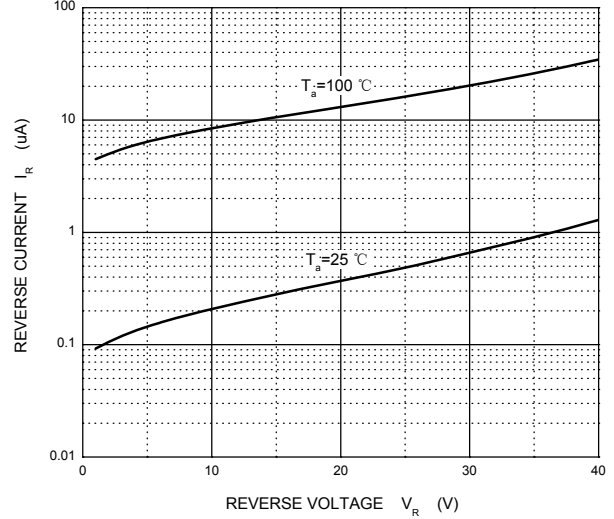
Parameter	Symbol	Min	Typ	Max	Unit	Conditions
Forward voltage	V_{F1}		0.28		V	$I_F=1\text{mA}$
	V_{F2}		0.36		V	$I_F=10\text{mA}$
	V_{F3}		0.54	0.60	V	$I_F=50\text{mA}$
Reverse current	I_R			5	μA	$V_R=10\text{V}$
Total capacitance	C_T		18	25	pF	$V_R=0, f=1\text{MHz}$

RATING AND CHARACTERISTIC CURVES

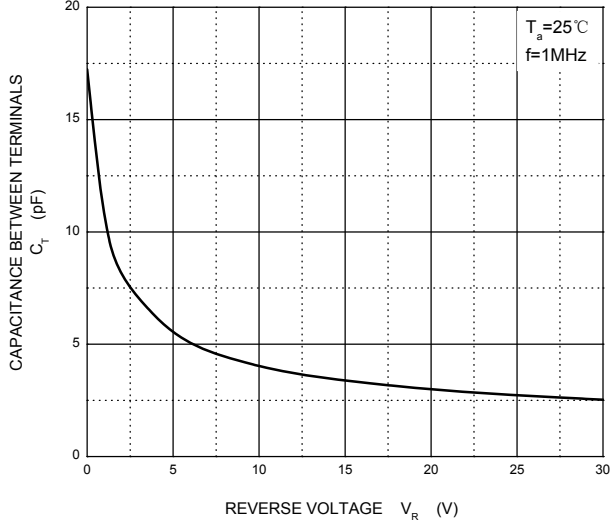
Forward Characteristics



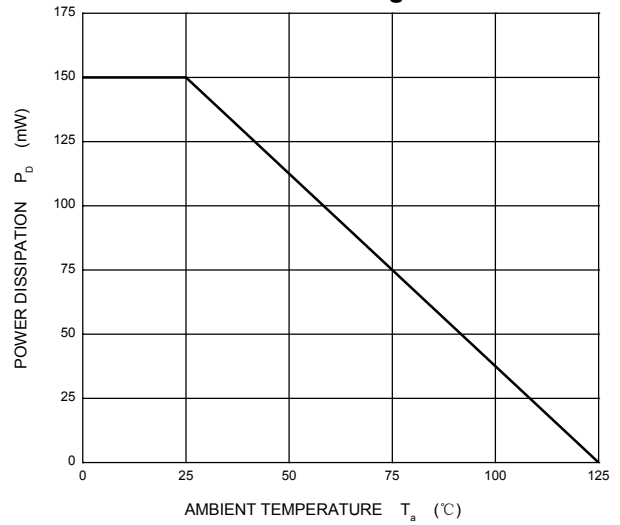
Reverse Characteristics



Capacitance Characteristics

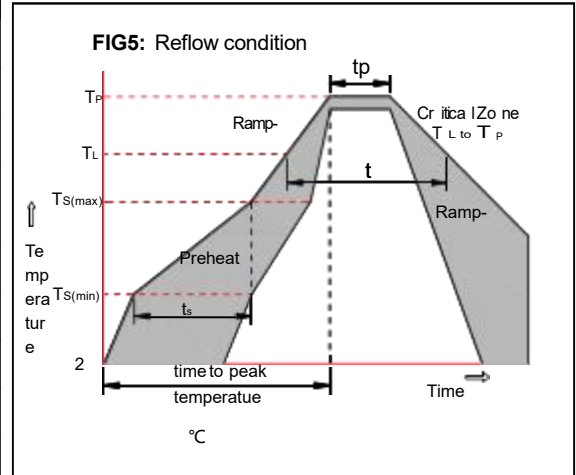


Power Derating Curve



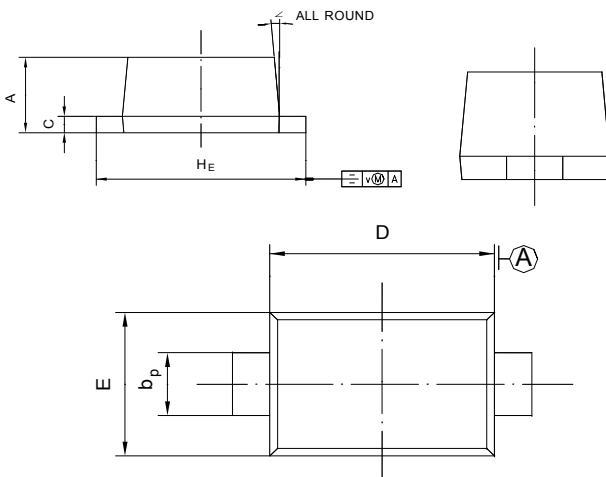
Soldering parameters

Reflow Condition		Pb-Free assembly (see as below)
Pre Heat	-Temperature Min ($T_{s(min)}$)	+150°C
	-Temperature Max($T_{s(max)}$)	+200°C
	-Time (Min to Max) (ts)	60-180 secs.
Average ramp up rate (Liquid us Temp (T_L) to peak)		3°C/sec. Max
$T_{s(max)}$ to T_L - Ramp-up Rate		3°C/sec. Max
Reflow	-Temperature(T_L)(Liquid us)	+217°C
	-Temperature(t_L)	60-150 secs.
Peak Temp (T_p)		+260(+0/-5)°C
Time within 5°C of actual Peak Temp (t_p)		30 secs. Max
Ramp-down Rate		6°C/sec. Max
Time 25°C to Peak Temp (T_p)		8 min. Max
Do not exceed		+260°C

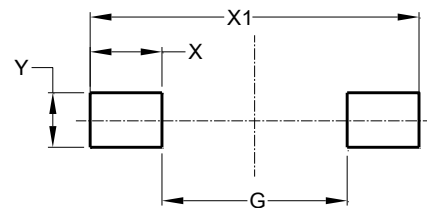


Package Dimensions & Suggested Pad Layout

SOD523



UNIT	A	b _p	C	D	E	H _E	V	∠
mm	0.70 0.50	0.40 0.20	0.14 0.05	1.30 1.10	0.90 0.75	1.70 1.50	0.1	5°



Dimensions	Value (in mm)
G	0.85
X	0.70
X1	2.25
Y	0.80

Tape & reel specification

Symbol	Dimension (mm)
P0	4.00±0.20
P1	2.00±0.20
P2	2.00±0.20
D0	1.55±0.20
D1	0.50±0.20
E	1.55±0.25
F	3.60±0.20
W	8.00±0.20
A0	1.30±0.20
B0	2.35±0.20
K0	0.95±0.20
T	0.20±0.20
D2	177.0±5.0
D3	55Min.
D4	R24.6±2.0
G	R82.0±2.0
I	13.0±2.0
W1	10.20±3.0
Quantity: 3000PCS	

