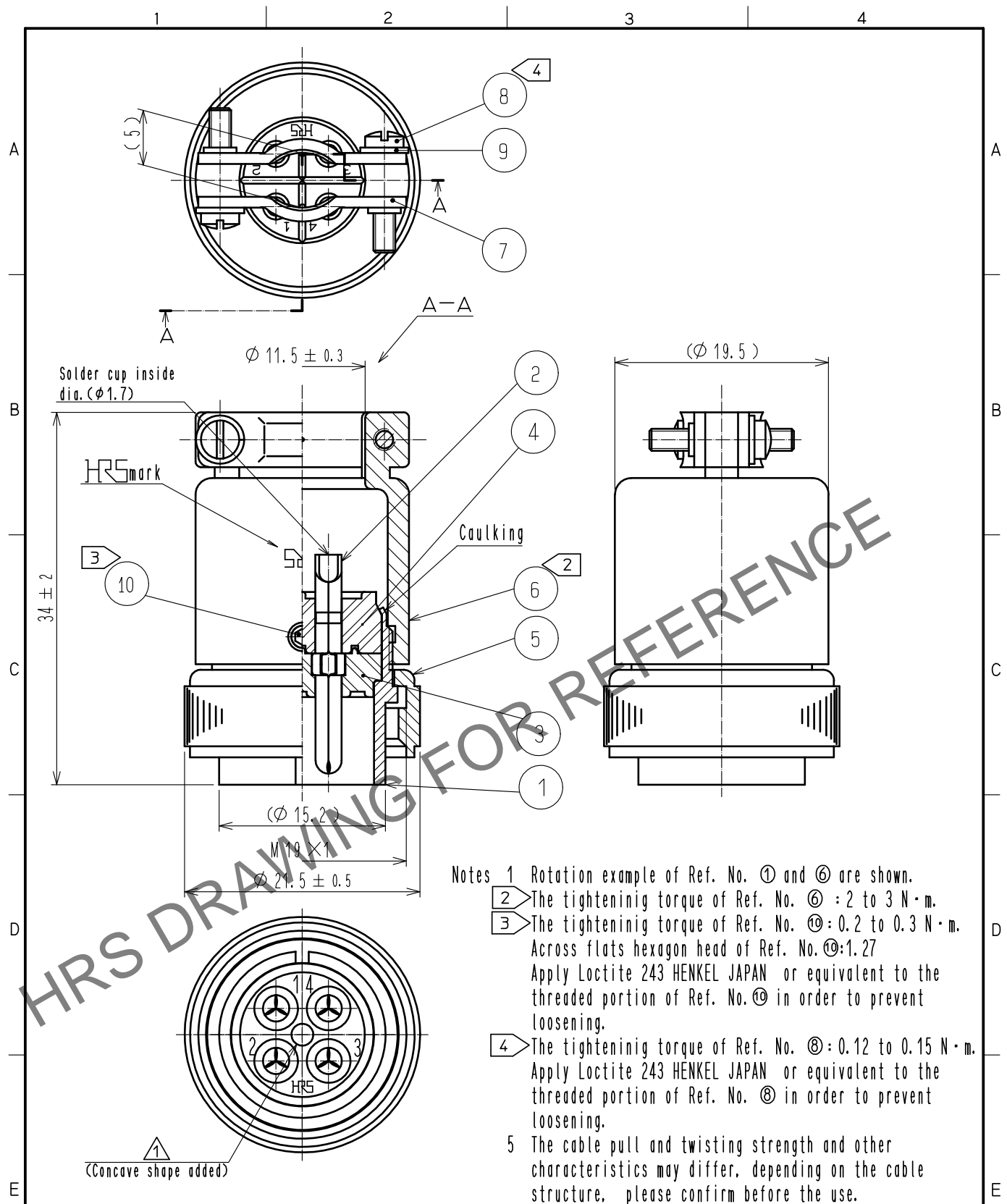


Feb.1.2026 Copyright 2026 HIROSE ELECTRIC CO., LTD. All Rights Reserved.  
 In case of consideration for using Automotive equipment / device which demand high reliability, kindly contact our sales window correspondents.



- Notes
- 1 Rotation example of Ref. No. ① and ⑥ are shown.
  - 2 The tightening torque of Ref. No. ⑥ : 2 to 3 N·m.
  - 3 The tightening torque of Ref. No. ⑩ : 0.2 to 0.3 N·m.  
 Across flats hexagon head of Ref. No. ⑩: 1.27  
 Apply Loctite 243 HENKEL JAPAN or equivalent to the threaded portion of Ref. No. ⑩ in order to prevent loosening.
  - 4 The tightening torque of Ref. No. ⑧ : 0.12 to 0.15 N·m.  
 Apply Loctite 243 HENKEL JAPAN or equivalent to the threaded portion of Ref. No. ⑧ in order to prevent loosening.
  - 5 The cable pull and twisting strength and other characteristics may differ, depending on the cable structure, please confirm before the use.

5	Brass	Nickel plating	10	Steel	Nickel plating
4	Polyphenylene sulfide	(Black)	9	Phosphor bronze	Nickel plating
3	Polyphenylene sulfide	(Black)	8	Brass	Nickel plating
2	Brass	Silver plating 2μm min.	7	Brass	Nickel plating
1	Brass	Nickel plating	6	Brass	Nickel plating
NO.	MATERIAL	FINISH . REMARKS	NO.	MATERIAL	FINISH . REMARKS

UNITS mm	SCALE 2 : 1	COUNT 1	DESCRIPTION OF REVISIONS DIS-C-00016536	DESIGNED TY. SUZUKI	CHECKED HY. KOBAYASHI	DATE 20231208
<b>HIROSE ELECTRIC CO., LTD.</b>			APPROVED : TP. KOMATSU 20230613 CHECKED : HY. KOBAYASHI 20230613 DESIGNED : HT. ZENBA 20230613 DRAWN : KR. SUZUKI 20230613	DRAWING NO. EDC-040369-81-00 PART NO. RM15TP-4PA(81) CODE NO. CL0109-0899-0-81	1/1	