

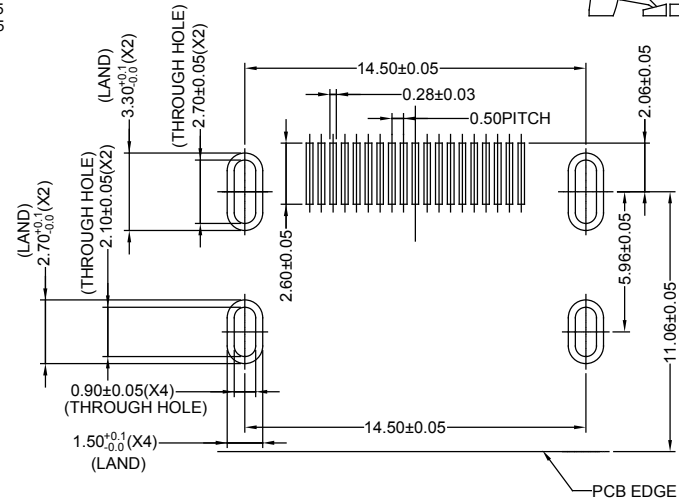
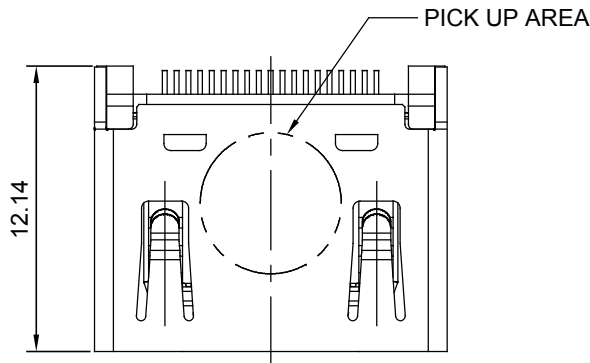
TOLERANCE UNLESS OTHERWISE SPECIFIED IN MM:
 0. ± 0.40
 0.0 ± 0.25
 0.00 ± 0.15
 0.000 ± 0.05

ANGLE ±1°

THIS IS A C.A.D. GENERATED DRAWING
 DO NOT MAKE MANUAL REVISIONS TO MASTER.

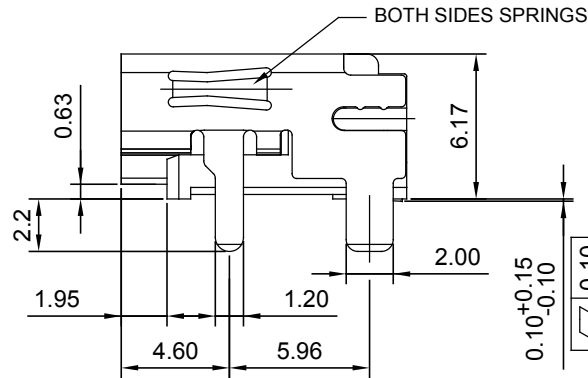
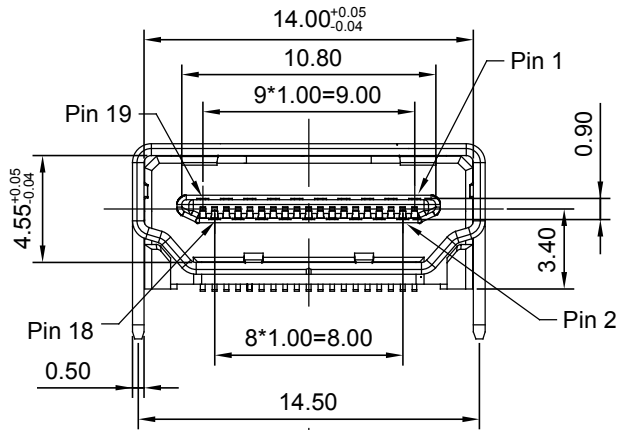


ISSUE NUMBER	
ORIGINAL	①
ADD DIM: 6.17 & 12.14 R.STA.MONICA SEPT.21/2015	②
SHEET 2 ADDED F.BRIONES NOV.03/2015	③
RIBS REMOVED N.SONDH NOV.26/2015	④
UPDATE DRAWING Y.ZHANG JUNE.20/2018	⑤



RECOMMENDED P.C.B. LAYOUT (T:1.20~1.60mm)

TOLERANCE UNSPECIFIED ±0.05mm

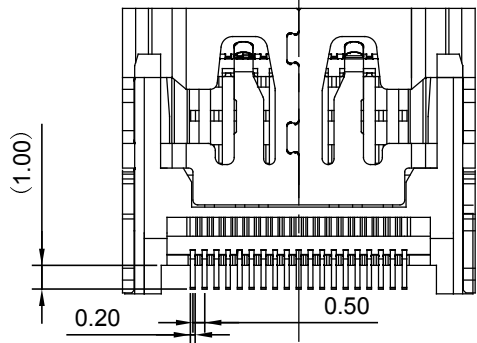


NOTES:

MATERIAL:
 HOUSING: THERMOPLASTIC, UL 94V-0, COLOR: BLACK
 SHELL: SPCC, NICKEL PLATED
 CONTACT: COPPER ALLOY, WITH CONTACT GOLD PLATED
 AND TIN PLATING ON SOLDER TAIL ALL OVER NICKEL

PART NUMBER: _____ GOLD PLATING THICKNESS
 690-019-298-412 GOLD FLASH PLATING
 690-019-698-412 30 MICROINCHES OF GOLD

OPERATING TEMPERATURE: -25°C ~ 85°C
 CURRENT RATING: 0.5A
 DIELECTRICAL WITHSTANDING
 VOLTAGE: 500V AC BET. ADJACENT TERMINAL (UNMATED)
 300V AC BET. ADJACENT TERMINAL (MATED)
 INSULATION RESISTANCE: 100 MEGOHMS MIN. (UNMATED)
 10 MEGOHMS MIN. (MATED)



HDMI SMT A TYPE
 WITHOUT FLANGE CONNECTOR

ACAD REFERENCE NO.: 690-019-298-412

DRAWN: R.STA.MONICA DATE: SEPT.03/2015

CHECKED: DATE:

PART NUMBER

SEE PART NO.

SHEET 1 OF 2

DRAWING NUMBER

690-019-298-412

ISSUE

5



THIS SERIES FULLY CONFORMS TO THE EUROPEAN UNION DIRECTIVES 2011/65/EU FOR RoHS COMPLIANCY.



EDAC INC
 TORONTO, ONTARIO
 CANADA
 YOUR CONNECTION TO QUALITY & SERVICE

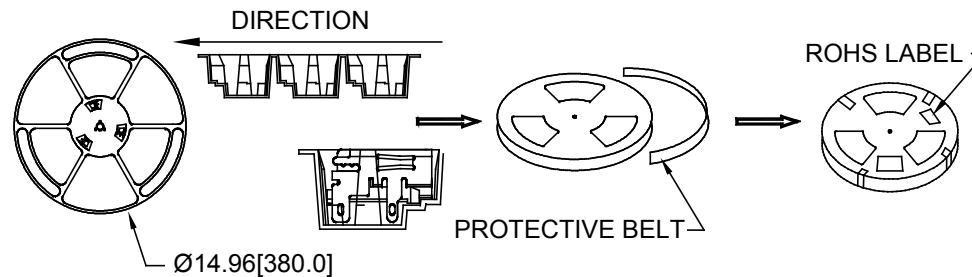
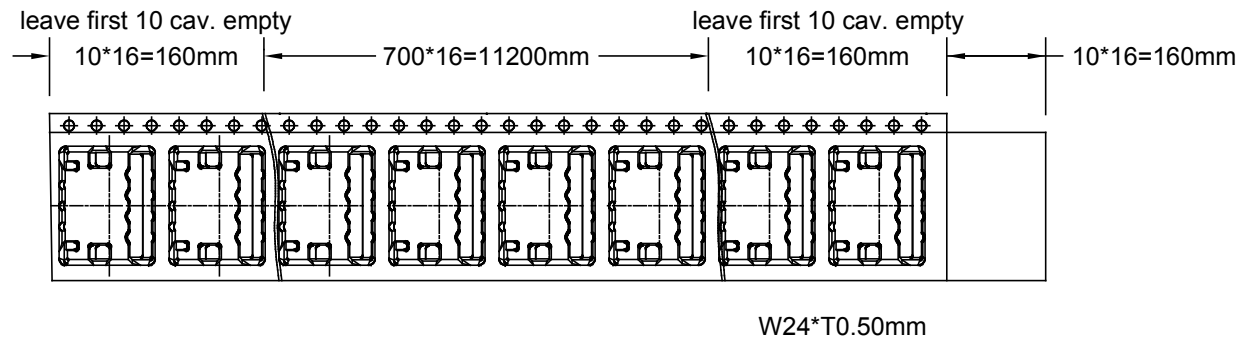
THESE DRAWINGS AND SPECIFICATIONS ARE THE PROPERTY OF EDAC INC., AND SHALL NOT BE REPRODUCED, OR COPIED OR USED AS THE BASIS FOR THE MANUFACTURE OR SALE OF APPARATUS WITHOUT WRITTEN PERMISSION.



THIS SPECIFICATION APPLIES TO REEL PACKAGING FOR 690-019-298-412 PRODUCT.

PACKING METHOD:

FIRST SET UP CARRIER AND SEALING COVER TAPE ON HEAT-SEALING MACHINE WELL. LEAVE THE FIRTS 10 CAVITIES EMPTY AND START PUTTING QUALIFIED PRODUCT FROM NO. 11 CAVITY AND ON AS FOLLOWING PICTURE SHOWN. LEAVE 10 CAVITIES EMPTY AGAIN AFTER FILLINF 700PCS PRODUCTS, THEN CUT OFF THE CARRIER FIRST AND KEEP 160mm LONG COVER TAPE ON TAIL AFTER. AT LAST, USE MASKING TAPE TO STICK THE TAIL TIGHTLY AND PUT REEL LABEL ON.



PCS/REEL 700 , REEL/CARTON 8, PCS/CARTON 5600

<p>PACKAGING FOR 690-019-298-412</p>		ACAD REFERENCE NO.: 690-019-298-412	
		DRAWN: F.BRIONES	DATE: NOV.03/15
		CHECKED:	DATE:
		PART NUMBER	
		SEE PART NO.	SHEET 2 OF 2
<p>THESE DRAWINGS AND SPECIFICATIONS ARE THE PROPERTY OF EDAC INC., AND SHALL NOT BE REPRODUCED, OR COPIED OR USED AS THE BASIS FOR THE MANUFACTURE OR SALE OF APPARATUS WITHOUT WRITTEN PERMISSION.</p>		DRAWING NUMBER	ISSUE
		690-019-298-412	5