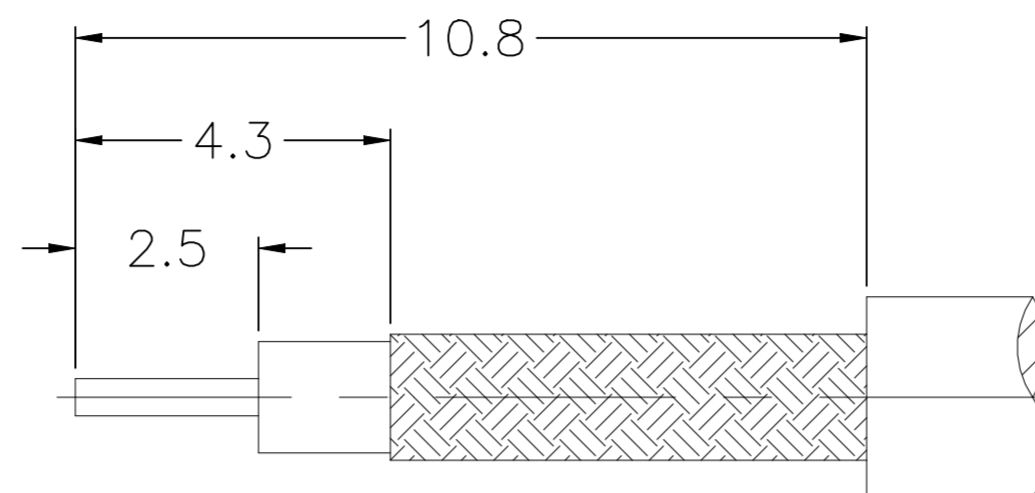
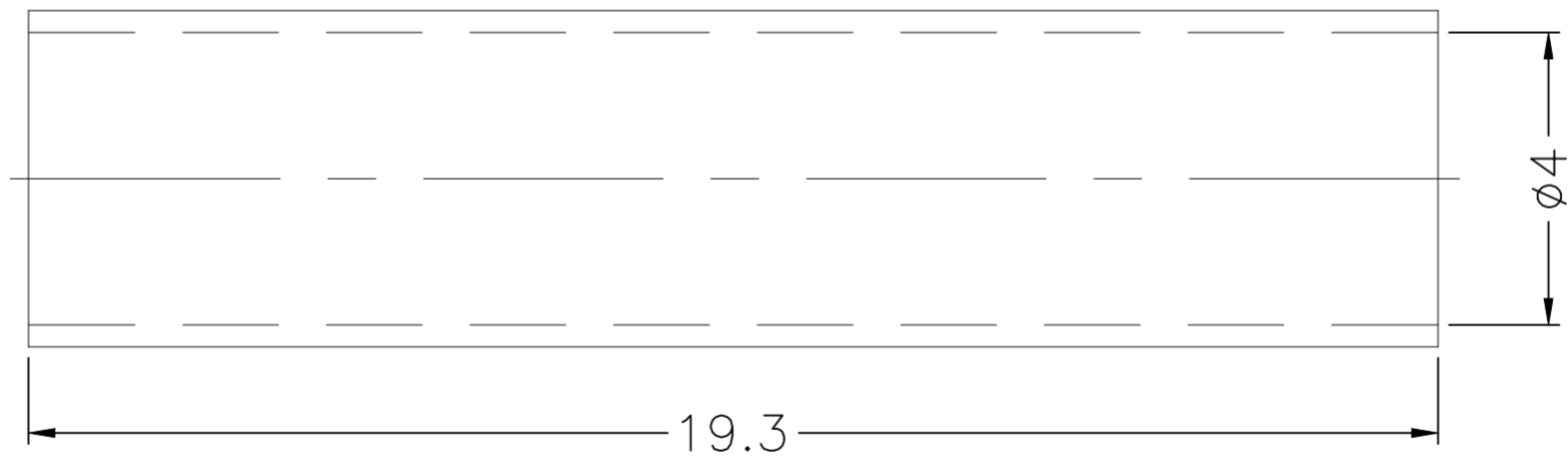
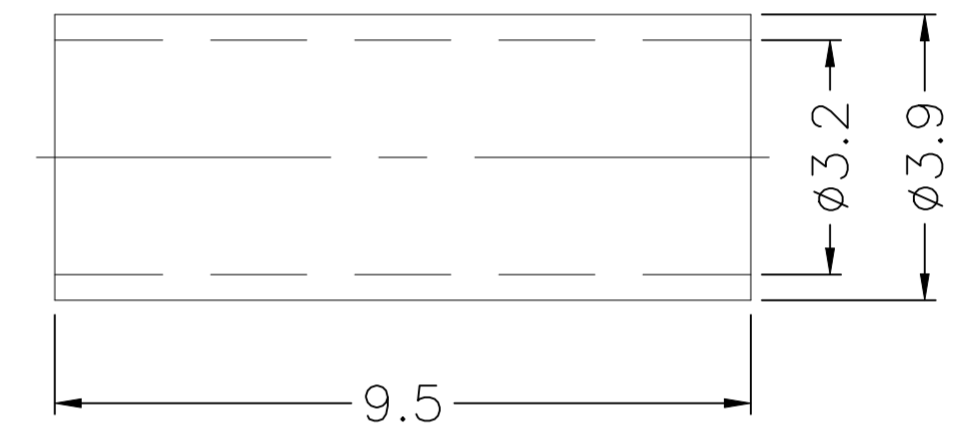
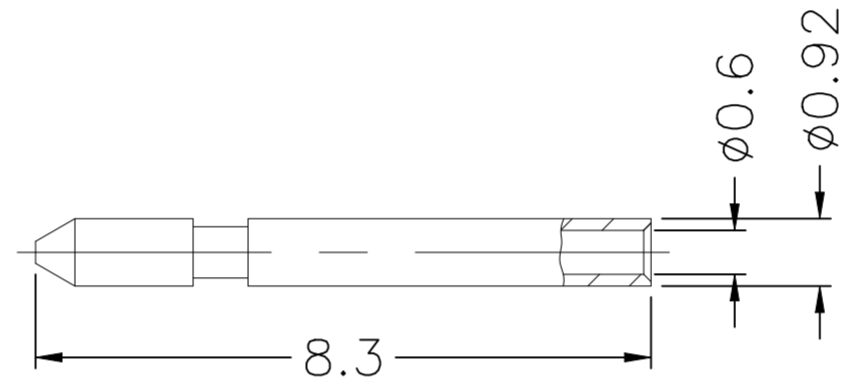
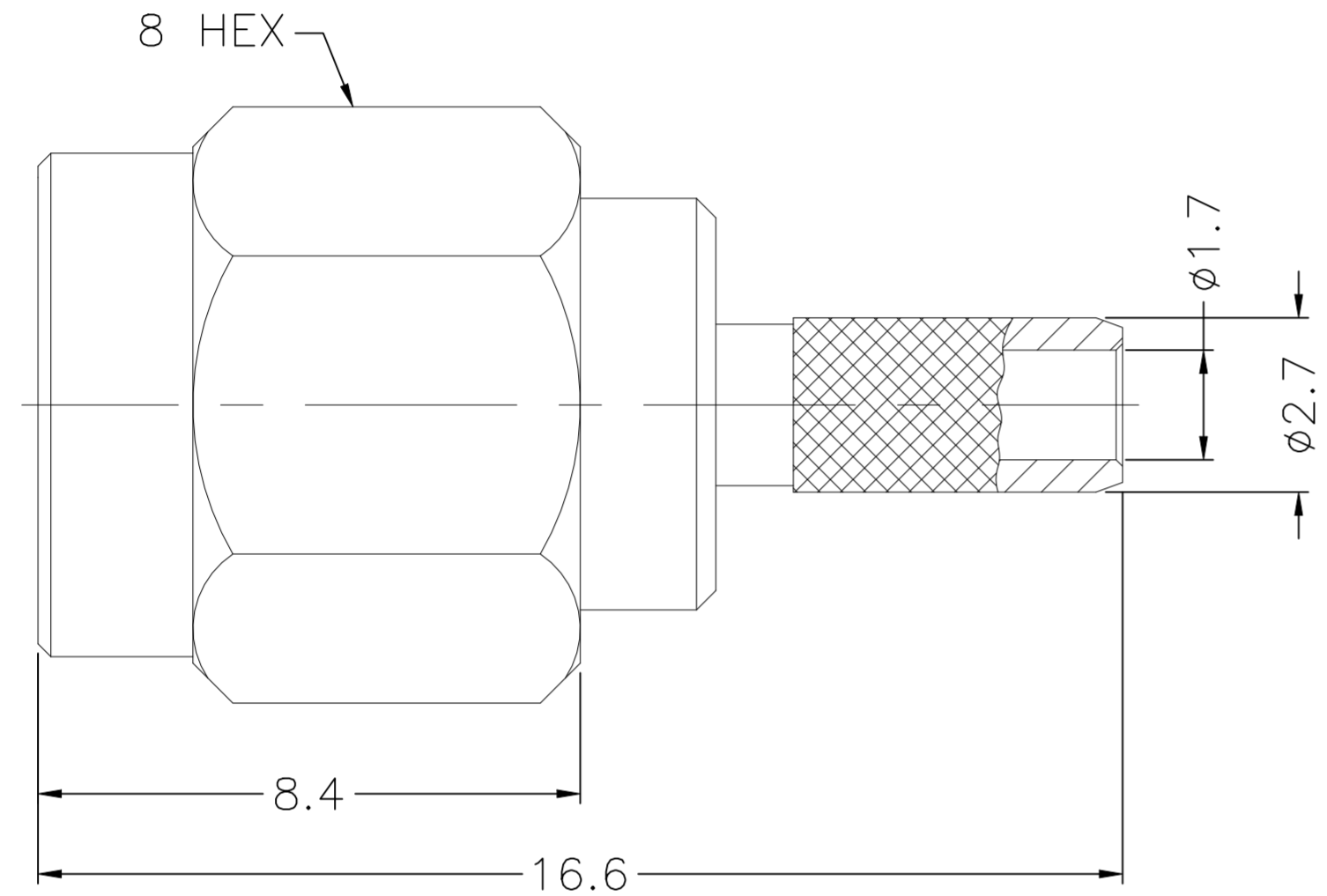
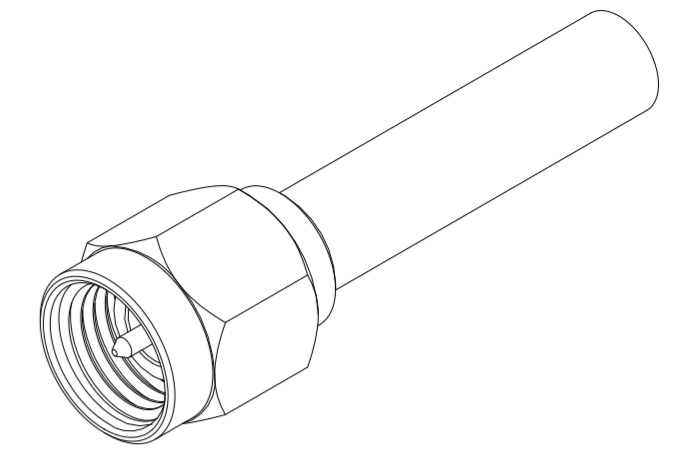


REVISIONS				
P	LTR	DESCRIPTION	DATE	APVD
A		ECN-24-274897 : GTP	11JUL2024	SS WH



RECOMMENDED CABLE STRIPPING DIM'S



1. CRIMPED FERRULE HEX CRIMP SIZE .128"

NOTES: FINISH (PLATING THICKNESS IN MICRO-INCHES)

- 1. BRASS
- 2. GOLD PL. 3 MIN. THICK OVER NICKEL PL. 50 MIN. THICK OVER COPPER PL. 50 MIN. THICK
- 3. GOLD PL. 30 MIN. THICK OVER NICKEL PL. 50 MIN. THICK OVER COPPER PL. 50 MIN. THICK
- 4. PTFE
- 5. PASSIVATED

SPECIFICATIONS:

- 1. IMPEDANCE: 50Ω
- 2. FREQUENCY: DC to 6GHz
- 3. VSWR/RL: 1.3 max./ 17.7dB min.
- 4. CONTACT RESISTANCE: CENTER: 3 milliohms max. OUTER: 2 milliohms max.
- 5. TEMPERATURE RANGE: -65°C TO +165°C
- 6. DURABILITY: 500 cycles min.
- 7. ENGAGEMENT AND DISENGAGEMENT FORCE: ENGAGEMENT: 2 in-lbs max. DISENGAGEMENT: 2 in-lbs max.
- 8. CABLE RETENTION FORCE (Cable assembly): 10 lbs min. or break
- 9. ROHS & REACH COMPLIANT

UNLESS OTHERWISE SPECIFIED TOLERANCES

- 0.5-6 = ±0.2
- 6-30 = ±0.4
- 30-120 = ±0.6
- 120-315 = ±1
- 315-1000 = ±1.6
- 1000-2000 = ±2.4

1	BLACK	-	HEAT SHRINK TUBE	8
1	NOTE 2	NOTE 1	FERRULE	7
1	NOTE 3	NOTE 1	CONTACT PIN	6
1	RED	SILICONE	GASKET	5
1	NOTE 5	SUS 304	RETAINER RING	4
1	NATURAL	NOTE 4	INSULATOR	3
1	NOTE 2	NOTE 1	BODY	2
1	NOTE 2	NOTE 1	SHELL	1

THIS DRAWING IS A CONTROLLED DOCUMENT.		DWN SIDDHARTH SINGH 29MAR2024	TE Connectivity	
DIMENSIONS: mm		CHK ERIC DAI 29MAR2024	NAME SMA PLUG STR CRIMP RG174 188A 316 6 GHz	
TOLERANCES UNLESS OTHERWISE SPECIFIED:		APVD WENKE HE 29MAR2024	PRODUCT SPEC 108-161323	
MATERIAL		FINISH	WEIGHT	SCALE 1:1
-		-	-	SHEET 1 OF 1
CUSTOMER DRAWING		CAGE CODE 00779	DRAWING NO. C-2484789	REV A