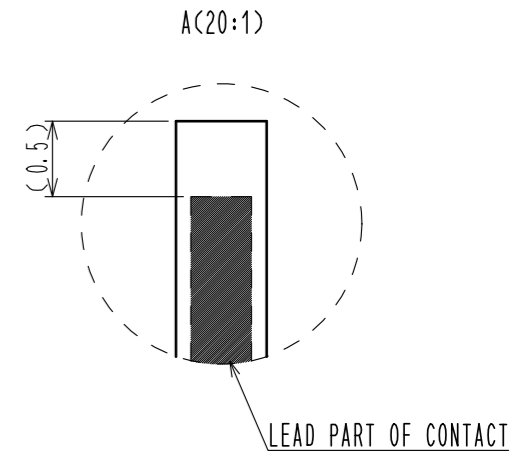
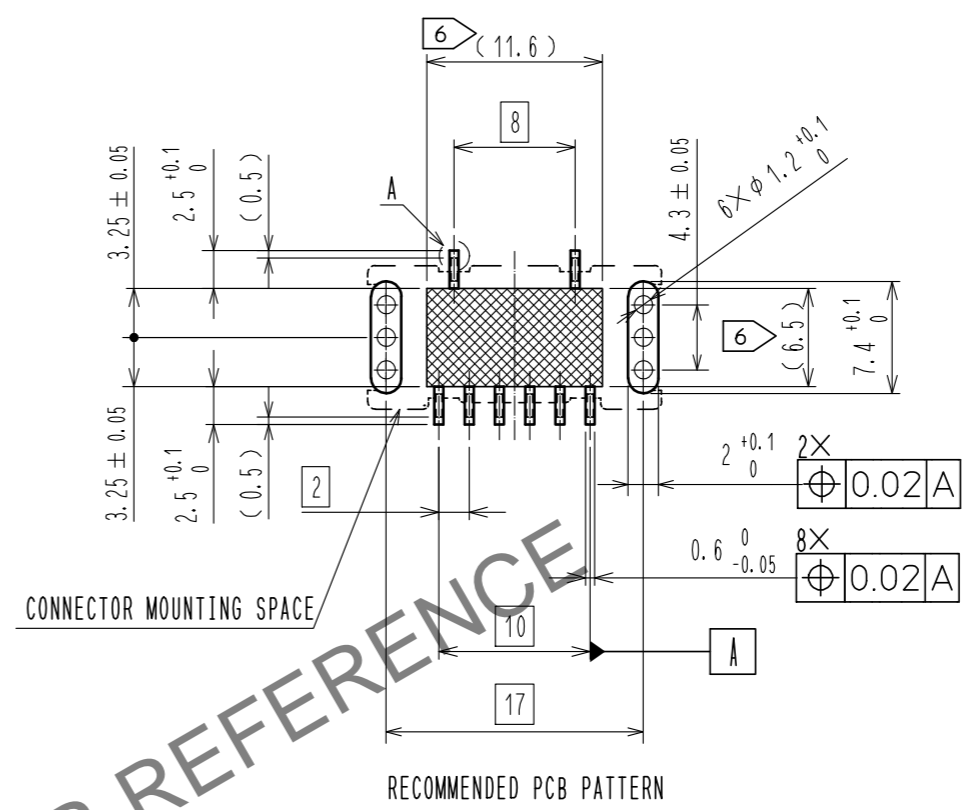
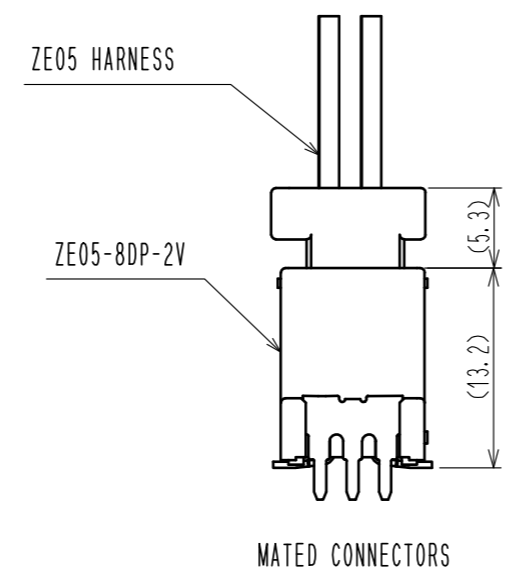
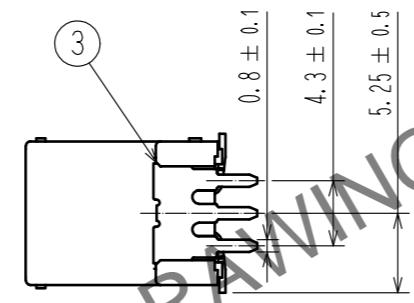
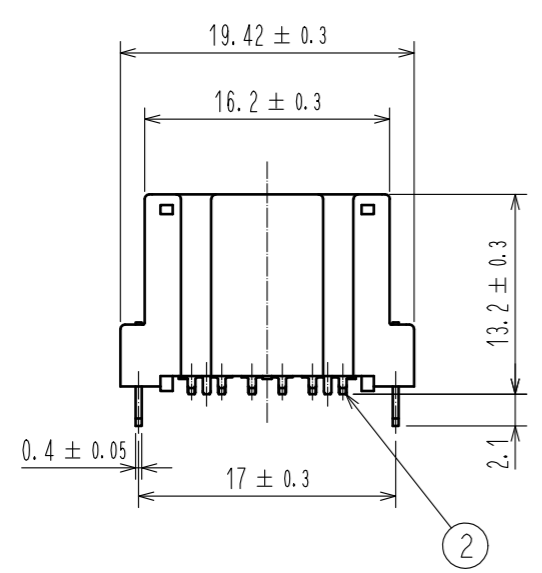
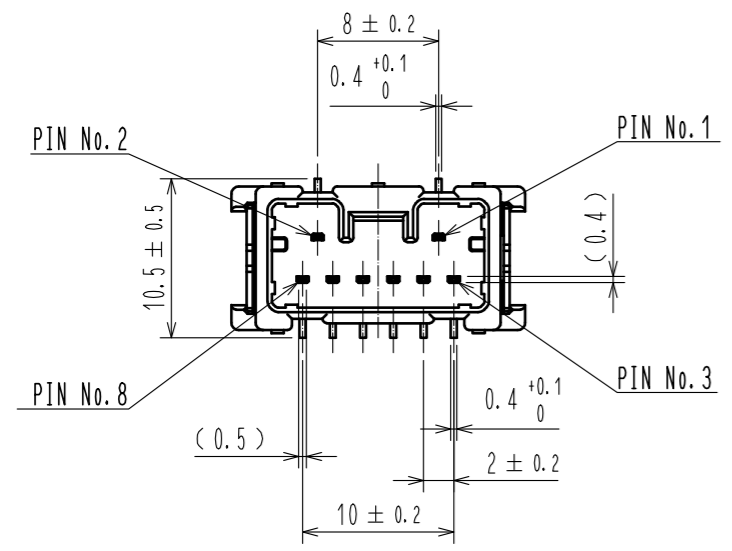
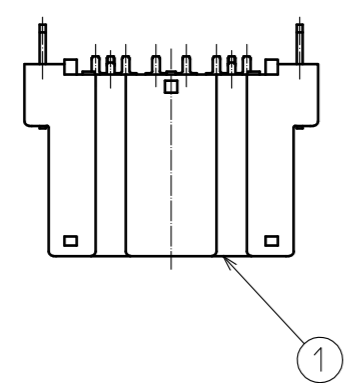
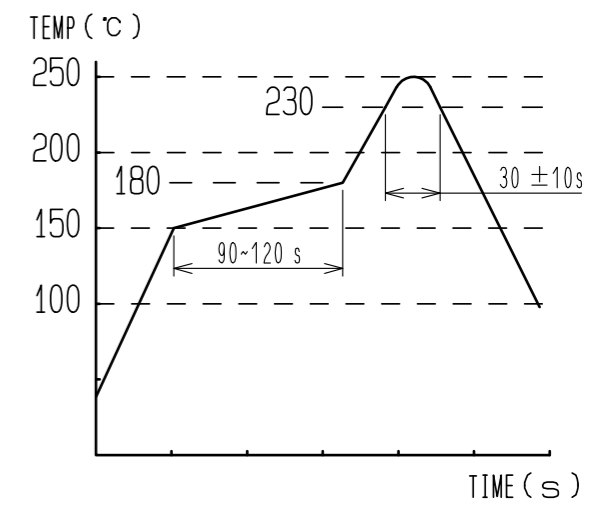


Mar.1.2026 Copyright 2026 HIROSE ELECTRIC CO., LTD. All Rights Reserved.  
In case of consideration for using Automotive equipment / device which demand high reliability, kindly contact our sales window correspondents.

ELV, ROHS COMPLIANT



- NOTE 1. RECOMMENDED TEMPERATURE PROFILE FOR REFLOW (REFER TO RIGHT FIG.)  
USED REFLOW SYSTEM : IR IN THE AIR OR NITROGEN  
NO. OF CYCLES : 2 MAX  
PEAK : 250°C  
OVER 230°C : 20~40s  
PREHEAT : 150~180°C  
90~120s
2. TEMPERATURE FOR SOLDERING IRON : 280~300°C WITHIN 2s
3. CO-PLANARITY SHALL BE 0.1mm MAX.
4. RECOMMENDED PCB THICKNESS IS 1.6mm.
5. RECOMMENDED SOLDER THICKNESS IS 0.15mm.
6. [Hatched Area Symbol] : PROHIBITED PATTERN AREA

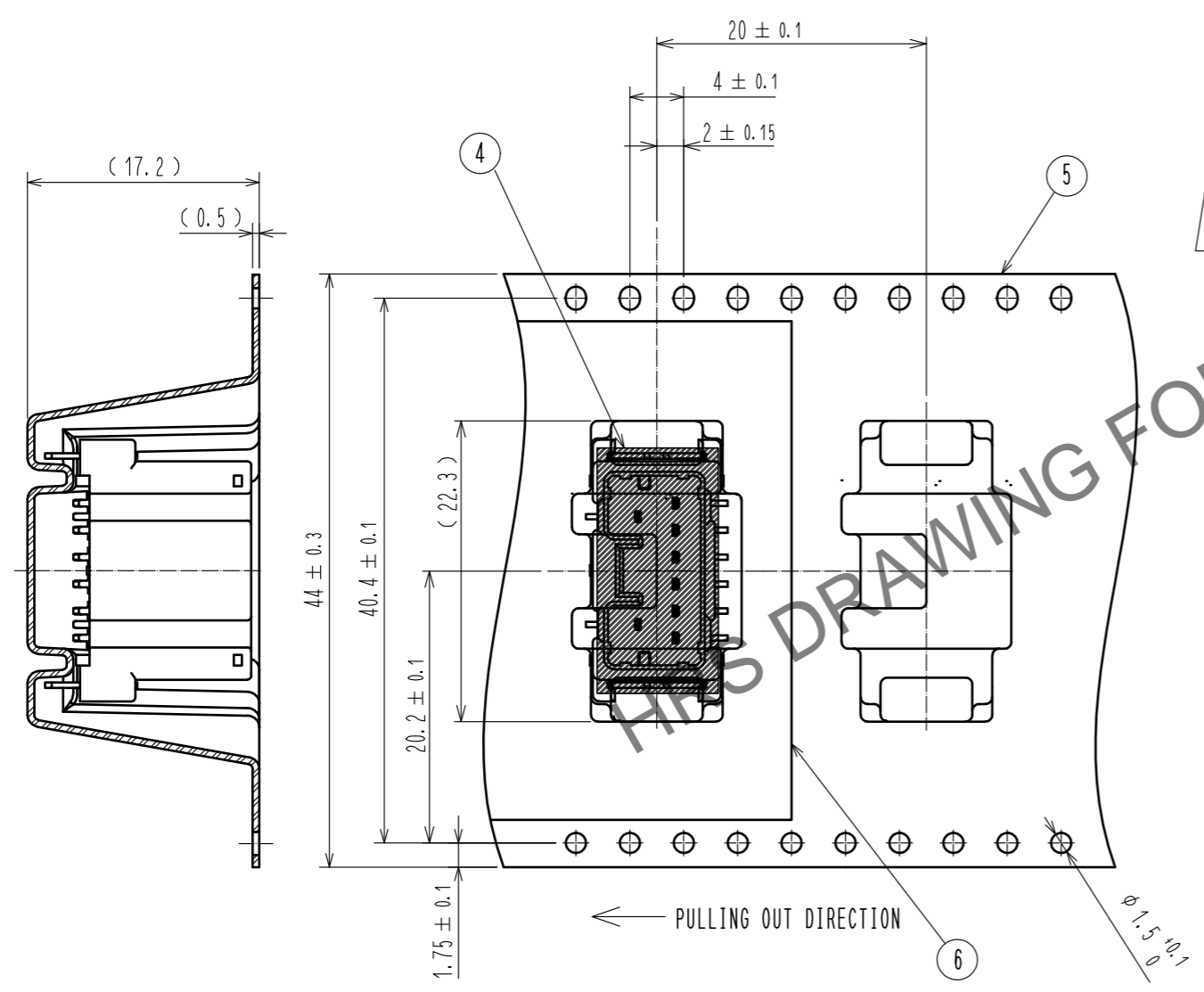


|             |                                 |   |          |                                 |   |
|-------------|---------------------------------|---|----------|---------------------------------|---|
| 2           | BRASS                           | SURFACE PLATING : TIN PLATING 1μm min<br>UNDER PLATING : NICKEL 1μm min | 6        | POLYESTER                       |   |
| 1           | PA                              | BLACK UL94V-0   | 5        | POLYSTYRENE                     |   |
|             |                                 |   | 4        | POLYIMIDE                       | PICK & PLACE TAPE   |
|             |                                 |   | 3        | BRASS                           | SURFACE PLATING : TIN PLATING 1μm min<br>UNDER PLATING : NICKEL 1μm min |
| NO.         | MATERIAL                        | FINISH . REMARKS  | NO.      | MATERIAL                        | FINISH . REMARKS  |
| UNITS<br>mm |                                 | SCALE<br>2 : 1  | COUNT    | DESCRIPTION OF REVISIONS        | DESIGNED  |
| <b>HRS</b>  | HIROSE<br>ELECTRIC<br>CO., LTD. | APPROVED : OM. MIYAMOTO<br>20190815                                     | 20190815 | DRAWING NO.<br>EDC-368647-00-00 | CHECKED   |
|             |                                 | CHECKED : OM. MIYAMOTO<br>20190815                                      | 20190815 | PART NO.<br>ZE05-8DP-2V         | DATE  |
|             |                                 | DESIGNED : TY. ISHIGURO<br>20190815                                     | 20190815 | CODE NO.<br>CL752-2303-0-00     |   |
|             |                                 | DRAWN : YK. MITSUISHI<br>20190815                                       | 20190815 |                                 |   |

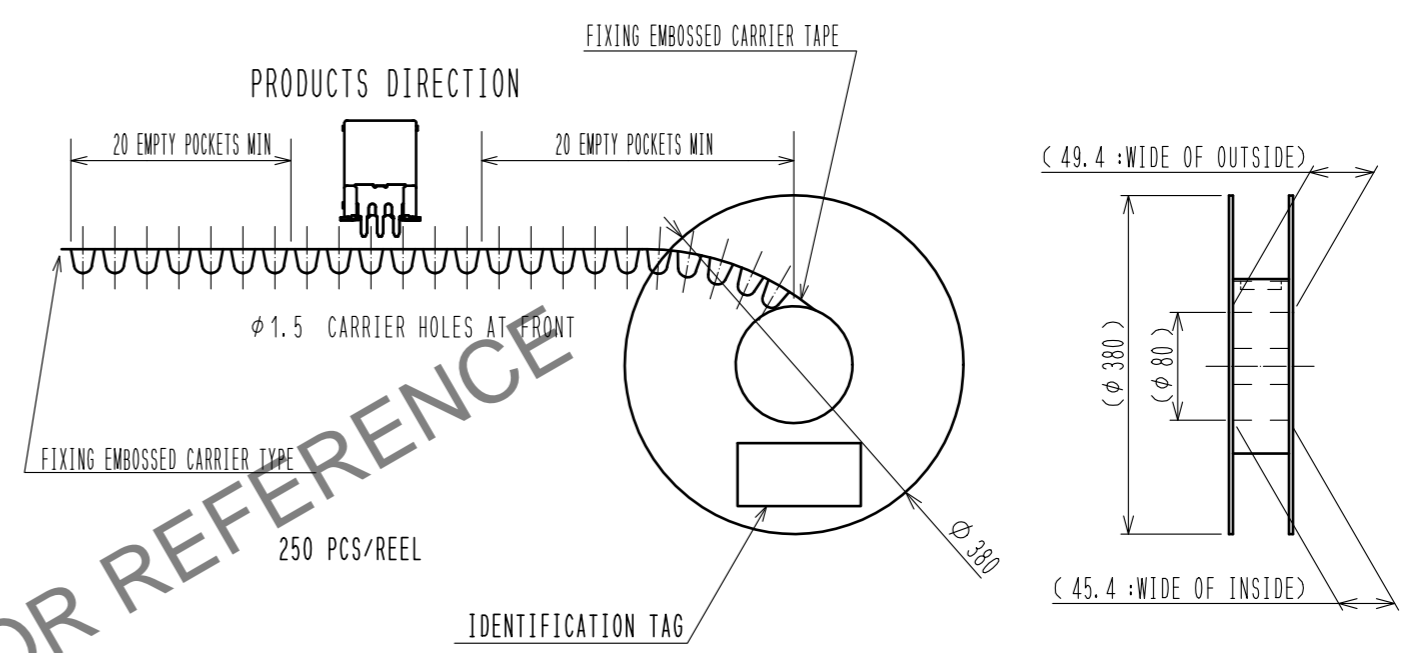
Mar.1.2026 Copyright 2026 HIROSE ELECTRIC CO., LTD. All Rights Reserved.  
 In case of consideration for using Automotive equipment / device which demand high reliability, kindly contact our sales window correspondents.

# PACKING STYLE

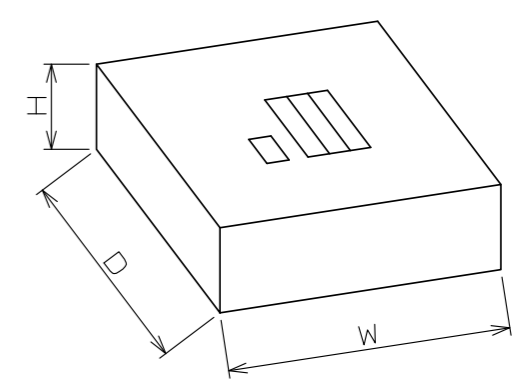
## PACKING STYLE DRAWING



## REEL DIMENSION



## CARDBOARD DIMENSION (FREE)



W=(405) (mm)  
 D=(405) (mm)  
 H= (51) (mm)

|            |             |                  |     |
|------------|-------------|------------------|-----|
| <b>HRS</b> | DRAWING NO. | EDC-368647-00-00 | 2/2 |
|            | PART NO.    | ZE05-8DP-2V      |     |
|            | CODE NO.    | CL752-2303-0-00  |     |
|            |             |                  |     |