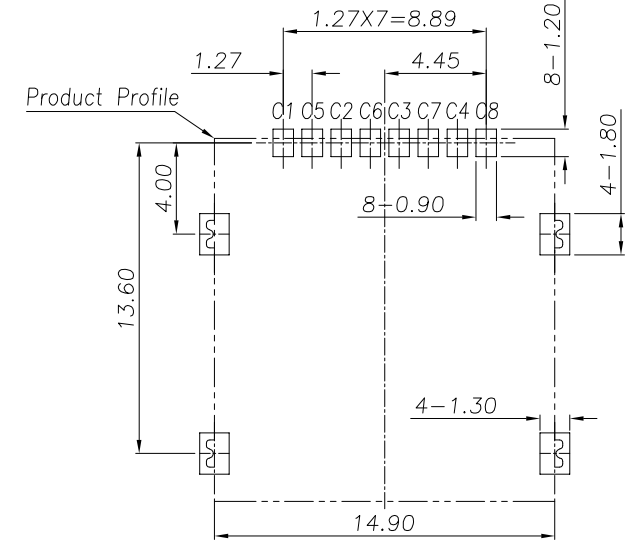
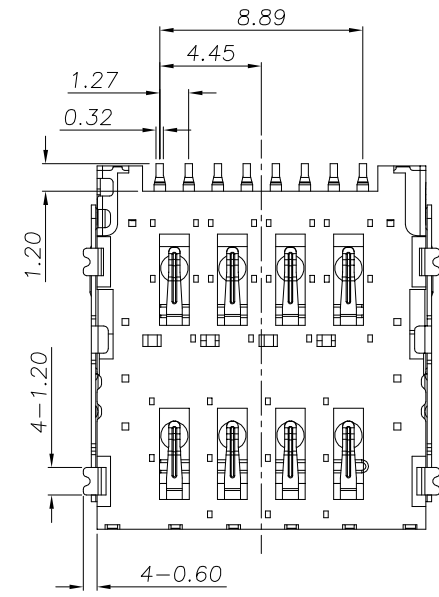
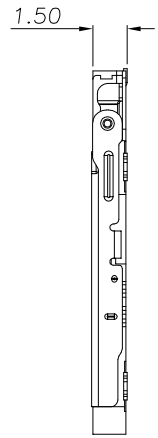
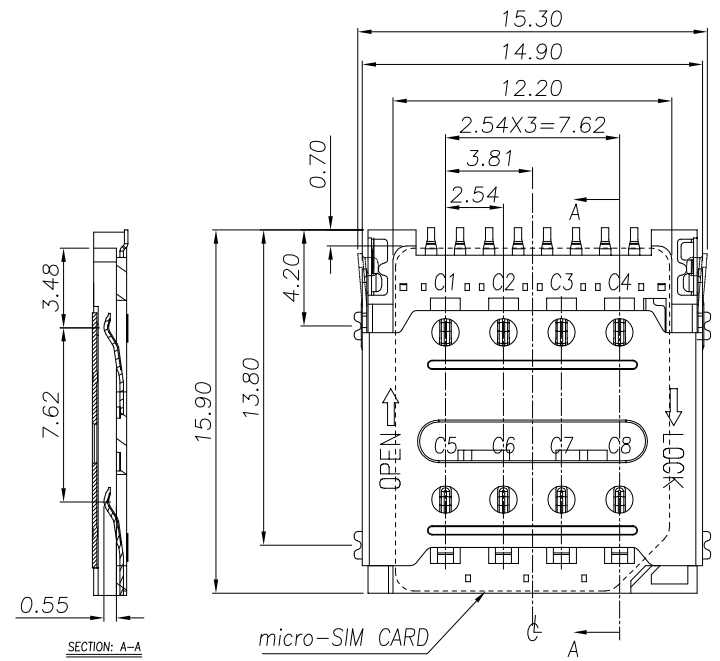


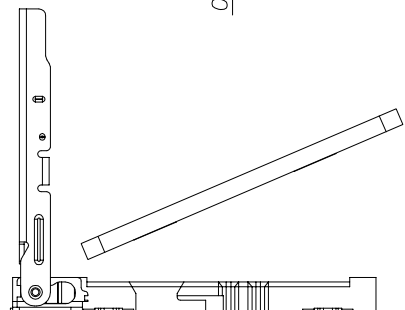
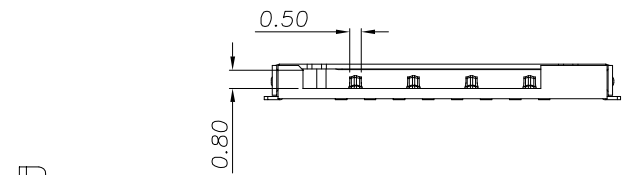
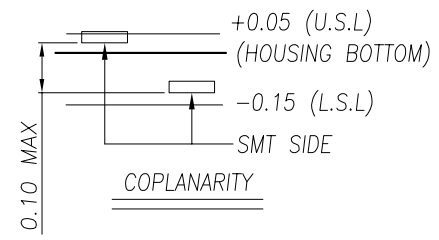
| REV | MARK | 修改摘要                 | 签名        | 日期         |
|-----|------|----------------------|-----------|------------|
| NO  |      | REVISION DESCRIPTION | SIGNATURE | DATE       |
|     |      | NEW DWG              |           | 2016-03-12 |



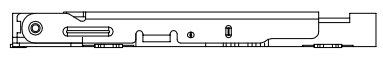
RECOMMENDED PCB LAYOUT  
GENERAY TOLERANCE ±0.05

NOTES:

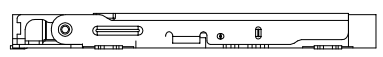
- ELECTRICAL CHARACTERISTICS
  - CONTACT RESISTANCE: 60 Milliohms Max
  - INSULATION RESISTANCE: 1,000 Megohms Min.
  - DIELECTRIC WITHSTANDING VOLTAGE: 500V AC FOR 1 MINUTE.
- MECHANICAL CHARACTERISTICS
  - OPERATION TEMPERATURE RANGE: -25°C~+70°C
  - DURABILITY: 5000 CYCLES
- MATERIAL:
  - HOUSING: THERMOPLASTIC, UL 94-V0
  - TERMINAL: PHOSPHOR BRONZE, T=0.15
  - SHELL: STAINLESS STEEL, T=0.15
- FINISHED:
  - TERMINAL: Ni PLATED UNDER, Au PLATED ON CONTACT AREA, G/F PLATED ON SOLDER TAIL
  - SHELL: Ni PLATED UNDER, G/F PLATED ON SOLDER TAIL



STEP 1 INSERT Micro-SIM CARD



STEP 2 PUSH THE SHELL



STEP 3 FINISH

| SIM CARD |          |
|----------|----------|
| Pin No.  | NAME     |
| C1       | VCC      |
| C2       | RST      |
| C3       | CLK      |
| C4       | RESERVED |
| C5       | GND      |
| C6       | VPP      |
| C7       | I/O      |
| C8       | RESERVED |



深圳市华德共创科技有限公司  
Shenzhen Huade co-create Technology Co., LTD  
电话: 0755-27111216 传真: 0755-29940187

| -TOLERANCES-<br>UNLESS OTHERWISE SPECIFIED<br>公差参数表 |            | TITLE:<br>产品名称: MICRO SIM 1.5H 8P掀盖式 |                             |
|---|------------|--------------------------------------|-----------------------------|
| X.X ±0.30   | X.X* ±3°   | APPD:<br>核准:                         | PART NO:<br>产品编号: K-DYX-005 |
| X.XX ±0.20  | X.XX* ±2°  | CHECK:<br>校对: 王建业                    | DATE                        |
| X.XXX ±0.10   | X.XXX* ±1° | DRAW:<br>绘图: 黄艳兰                     | SCALE                       |
|   |            |                                      | UNIT                        |
|   |            | 2016-03-12                           | CODE NUMBER                 |
|   |            | 1:1                                  | A001                        |
|   |            | mm                                   |                             |