

Features

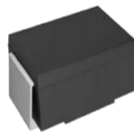
- Low forward voltage drop
- Guarding protection
- Glass passivated junction
- High current capability
- High efficiency operation
- Extremely low thermal resistance
- Halogen free and RoHS compliant

Mechanical Data

- Case: SMA molded plastic
- Polarity: Color band denotes cathode end
- Mounting position: ANY
- Weight: 0.0025 ounces, 0.071 gram

Ordering Information

- Shipping Qty: 5000/7inch Tape & Reel



SMA



Absolute Maximum Ratings (T_A=25°C unless otherwise noted)

CHARACTERISTICS	SYMBOL	SS14A	SS16A	SS110A	SS120A	UNITS
	Marking	SS14	SS16	SS110	SS120	
Maximum repetitive peak reverse voltage	V _{RRM}	40	60	100	200	V
Maximum RMS voltage	V _{RWS}	28	42	70	140	V
Maximum DC blocking voltage	V _{DC}	40	60	100	200	V
Maximum average forward rectified current at T _L =90°C	I _{F(AV)}	1.0				A
Peak forward surge current 8.3ms single half-sine-wave	I _{FSM}	30				A
Maximum instantaneous forward voltage at I _{FM} =1.0A (NOTE1)	V _F	0.55	0.70	0.85	0.95	V
Maximum DC reverse current T _J =25°C at rated DC blocking voltage T _J =125°C	I _R	0.5 50.0		0.1 10.0		m A
Maximum thermal resistance	R _{θJL}	80				°C/W
Operating temperature range	T _J	-55 ---- +125				°C
Storage temperature range	T _{STG}	-55 ---- +150				°C

Typical Electrical Characteristic Curves

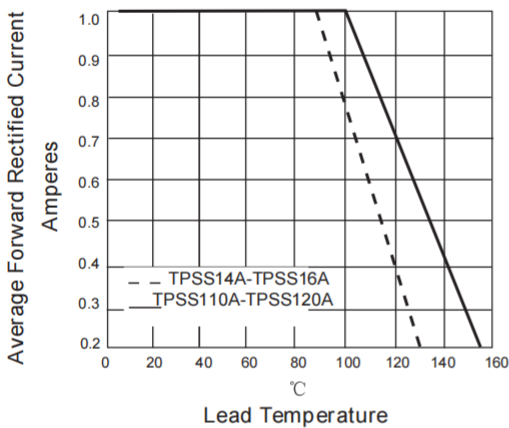


FIG. 1- DERATING CURVE OUTPUT RECTIFIED CURRENT

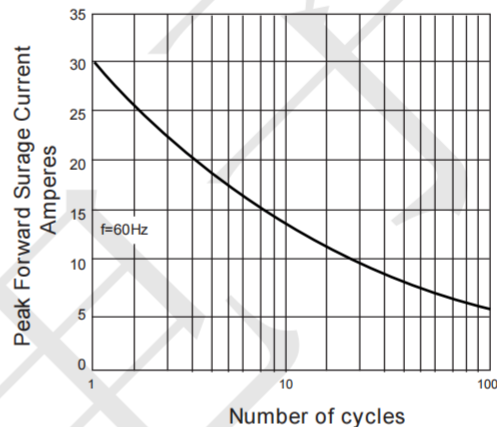


FIG. 2-MAXIMUM NON-REPETITIVE PEAK FORWARD SURGE CURRENT PER LEG

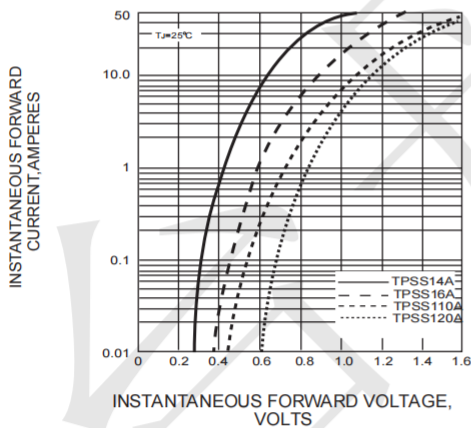


FIG. 3-TYPICAL FORWARD VOLTAGE CHARACTERISTICS

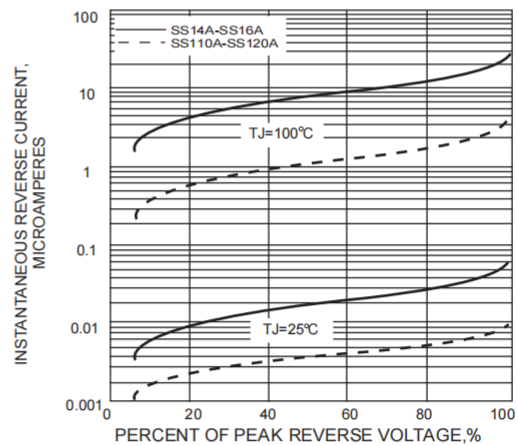
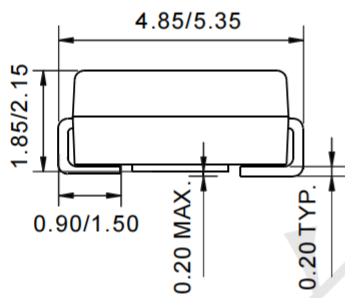
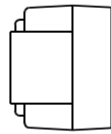
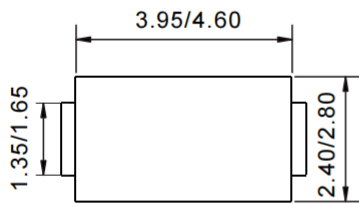


FIG. 4-TYPICAL REVERSE LEAKAGE CHARACTERISTICS

Outline Drawing - SMA(DO-214AC) (Unit: mm)



Mounting Pad Layout-SMA(DO-214AC) (Unit: mm)

