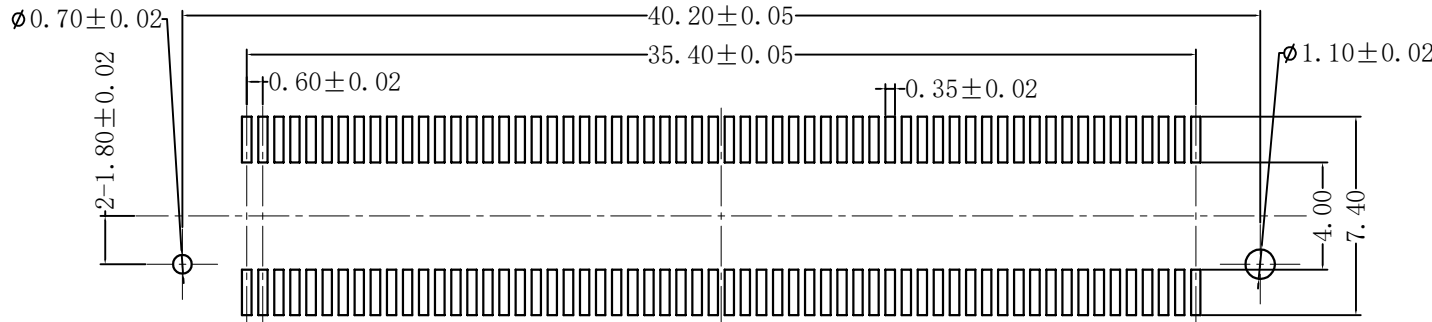


MATING VIEW



RECOMMENDED P.C.BOARD LAYOUT

SPECIFICATIONS:

- 1.VOLTAGE/CURRENT RATING: 100V/AC, DC,0.4A;
- 2.WITHSTANDING VOLTAGE: 300V AC/ONE MINUTE;
- 3.INSULATION RESISTANCE: 1000M Ω MIN./250V DC.;
- 4.CONTACT RESISTANCE: 45m Ω MAX./100mA;
- 5.DURABILITY: 50 CYCLES;
- 6.OPERATING TEMPERATURE RANGE: -55° C TO 85° C.

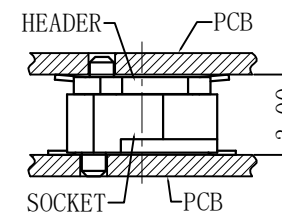
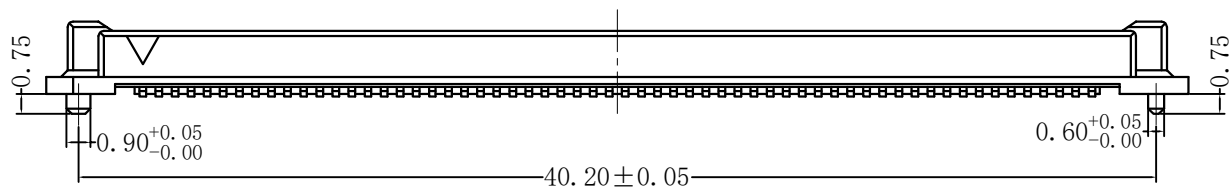
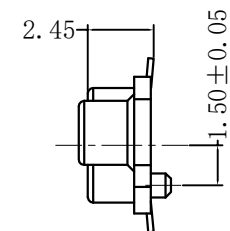
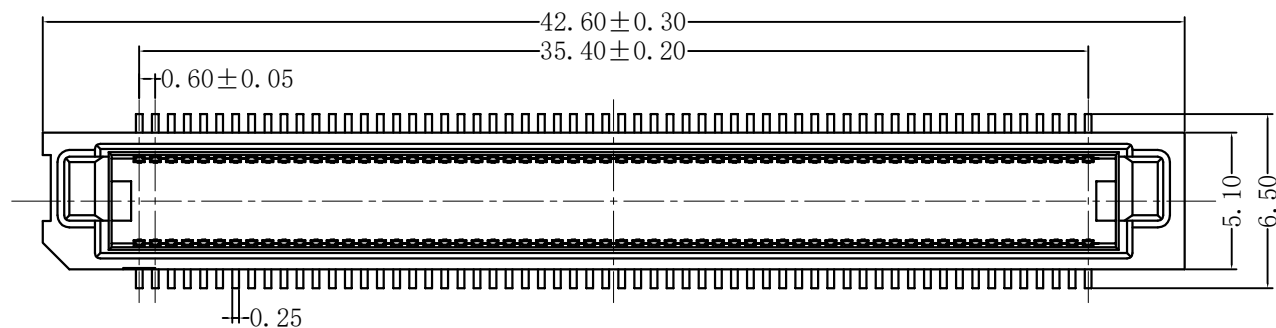
MATERIAL:

- 1.INSULATOR: PPS,UL 94V-0, LIGHT BROWN;
- 2.TERMINAL: PHOSPHOR BRONZE;

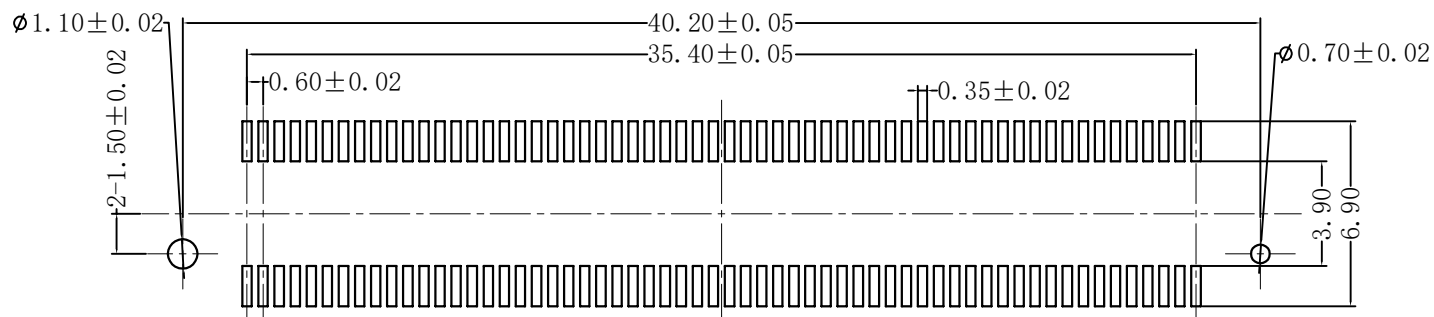
PLATING:

- 1.TERMINAL: CONTACT AREA: GOLD 0.05μm"MIN.  
LEAD AREA: GOLD 0.025μm"MIN.  
UNDERPLATING: NICKEL 1μm" MIN.

△	DATE	ECR	东莞市文章济美电子有限公司					PART NAME: BTB P0.60 120P SOCKET MH3.0				TOLERANCE:		
												. ±0.5	.X ±2°	
			APPROVED	CHECKED	DRAWING	DWG NO.	DATE	REV	SCALE	UNIT	SHEET		.X ±0.3	.XX ±1°
								A	FIT	mm	10F1		.XX ±0.2	.XXX ±0.1



MATING VIEW



RECOMMENDED P.C.BOARD LAYOUT

SPECIFICATIONS:

- 1.VOLTAGE/CURRENT RATING: 100V/AC, DC,0.4A;
- 2.WITHSTANDING VOLTAGE: 300V AC/ONE MINUTE;
- 3.INSULATION RESISTANCE: 1000M  $\Omega$  MIN/250V DC.;
- 4.CONTACT RESISTANCE: 45m  $\Omega$  MAX./100mA;
- 5.DURABILITY: 50 CYCLES;
- 6.OPERATING TEMPERATURE RANGE: -55° C TO 85° C.

MATERIAL:

- 1.INSULATOR: PPS,UL 94V-0, LIGHT BROWN;
- 2.TERMINAL: PHOSPHOR BRONZE;

PLATING:

- 1.TERMINAL: CONTACT AREA: GOLD 0.05 $\mu$ m"MIN.  
LEAD AREA:TIN 2.5 $\mu$ m" MIN.  
UNDERPLATING:NICKEL 1 $\mu$ m" MIN.

△	DATE	ECR	东莞市文章济美电子有限公司					PART NAME: BTB P0.60 120P HEADER MH3.0				TOLERANCE:	
								PART NO.: 5001B-BTB0624-120FR-00				. ±0.5	.X ±2°
			APPROVED	CHECKED	DRAWING	DWG NO.	DATE	REV	SCALE	UNIT	SHEET		.XX ±0.2
							A	FIT	mm	10F1	.XXX ±0.1		