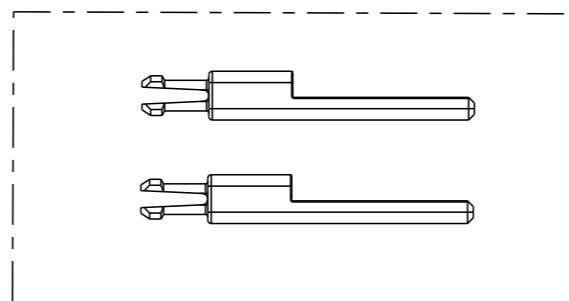
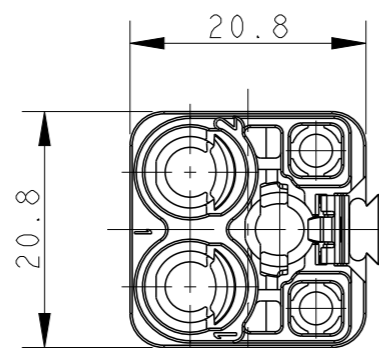
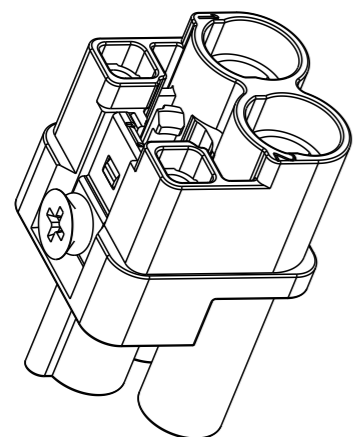
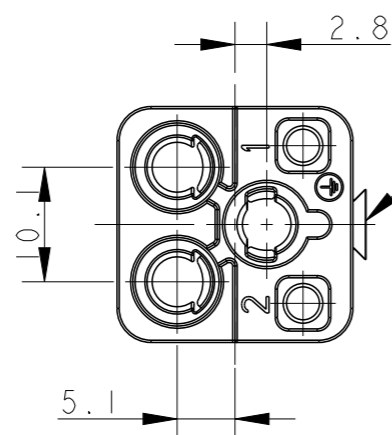
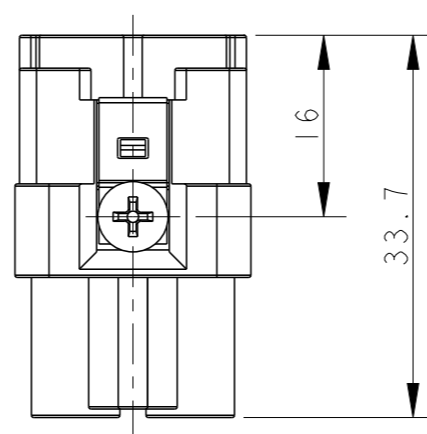
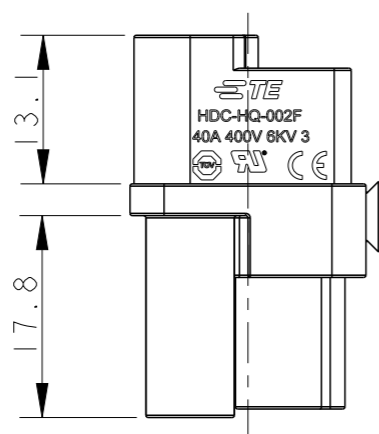


P	LTR	DESCRIPTION	DATE	DWN	APVD
	B	ECR-18-015945	09OCT2018	YC	CW
	BI	ECR-19-019179	30DEC2019	YC	CW
	C	ECR-21-117384	09NOV2021	WQR	CW
	D	ECR-25-237972	16JUN2025	ABS	RB



THE CODING PINS ARE PACKAGED WITH PRODUCT  
编码销与产品一起包装出货



M3 SCREW  
RECOMMENDED TIGHTENING TORQUE 0.5N.m  
M3 螺丝,  
推荐锁紧力矩 0.5N.m

NOTES:

- TECHNICAL CHARACTERISTICS:  
INSULATION MATERIAL: PC  
RATED VOLTAGE: 400V  
RATED CURRENT: 40A  
INSULATION RESISTANCE:  $\geq 400M\Omega$   
RATED IMPULSE VOLTAGE: 6KV  
POLLUTION DEGREE: 3  
MATING CYCLES: 500 CYCLES  
WIRE RANGE: 1-10 mm<sup>2</sup> (18-8 AWG)  
CONTACT TYPE: CRIMP CONTACT
- CONTACT NEED TO BE ORDERED SEPARATELY.  
(ORDER No. REFER TO DRAWING: T20400X20XX000)

注释:

- 技术参数:  
绝缘材料: PC  
额定电压: 400V  
额定电流: 40A  
绝缘电阻:  $\geq 400M\Omega$   
额定脉冲电压: 6KV  
污染等级: 3  
插拔次数: 500次  
接线范围: 1-10 mm<sup>2</sup> (18-8 AWG)  
接线类型: 冷压接
- 端子需要单独订购。  
(订货号参考图面: T20400X20XX000)

T2080022201-000	HQ-002-F	HQ-002 FEMALE INSERT HQ-002 母插
PART NUMBER 产品料号	PART DESCRIPTION 产品描述	

THIS DRAWING IS A CONTROLLED DOCUMENT.

DIMENSIONS:	TOLERANCES UNLESS OTHERWISE SPECIFIED:
mm	
	0 PLC ±-
	1 PLC ±-
	2 PLC ±-
	3 PLC ±-
	4 PLC ±-
	ANGLES ±-
MATERIAL	FINISH
-	-
-	-

DWN	14JUL2017
YORK CHEN	
CHK	14JUL2017
GINO YAO	
APVD	14JUL2017
CHRIS WANG	
PRODUCT SPEC	108-137310
APPLICATION SPEC	114-137310
WEIGHT	-
CUSTOMER DRAWING	

TE Connectivity		NAME		RESTRICTED TO
		HQ-002-F		
SIZE	CAGE CODE	DRAWING NO	-	
A3	00779	©-T2080022201000	-	
SCALE		SHEET	OF	REV
3:2		1	1	D