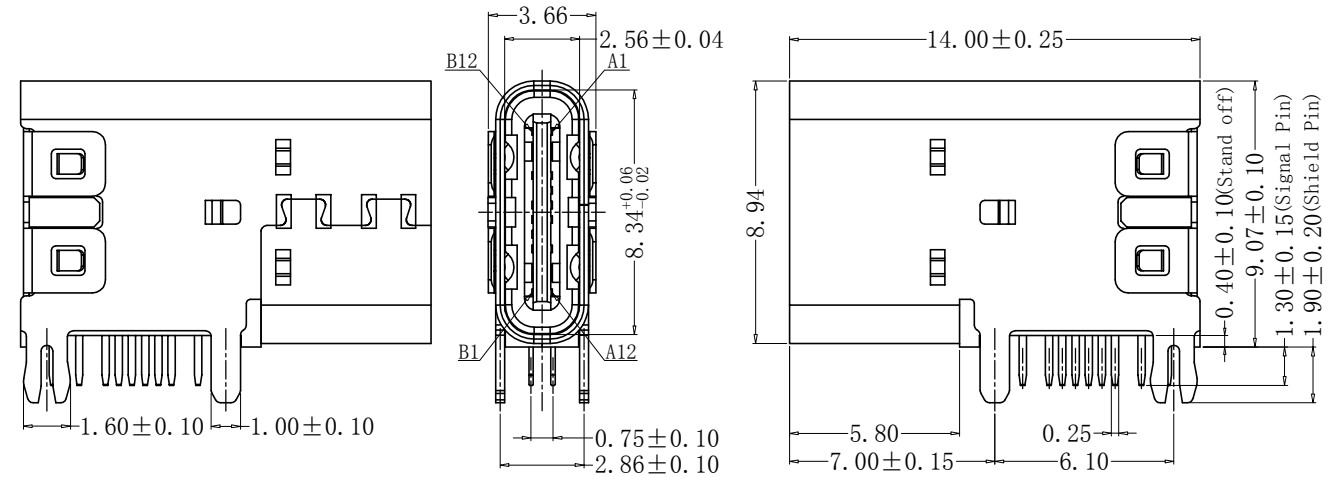


VER	MARK	PR. BY	ECR/ECN	DESCRIPTION	DATE
A					

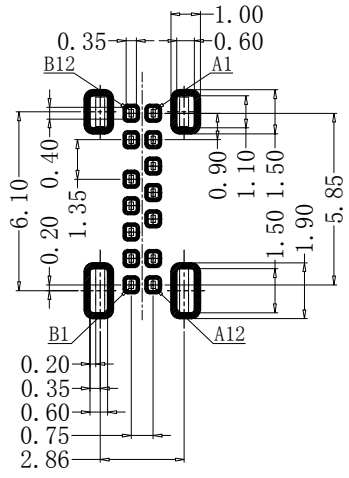
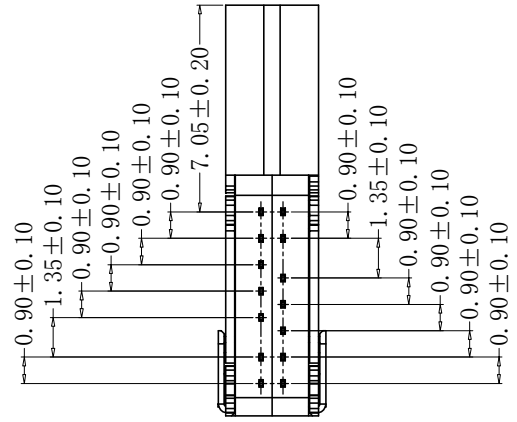
RoHs



SPECIFICATION:

- MATERIAL & FINISH:** SEE THE LIST;
- PLATING SPECIFICATION:**
 - CONTACTS:** Ni 50u" MIN. UNDER PLATED OVER ALL. Au PLATED ON THE MATING AREA OF CONTACT. Au PLATED OR MATTE SN PLATED ON THE SOLDER AREA.
 - FRONT SHELL:** Ni 30u" MIN. UNDER PLATED OVER ALL.
 - BACK SHELL:** Ni 30u" MIN. UNDER PLATED OVER ALL.
 - MID PLATE:** CLEAR ONLY
- MECHANICAL:**
 - MATING FORCE:** 5~20N;
 - UNMATING FORCE:** 8~20N. 6~20N AFTER DURABILITY TEST;
 - DURABILITY:** 10000 CYCLES;
- ELECTRICAL:**
 - CURRENT RATING:** 3A /5A Max;
 - VOLTAGE RATING:** 20V Max;
 - DIELECTRIC WITHSTANDING VOLTAGE:** 100VAc;
 - CONTACT RESISTANCE:** 40mΩ Ohms Max. ;
 - INSULATION RESISTANCE:** 100M Ohms Min. ;
- ENVIRONMENTAL:**
 - OPERATING TEMPERATURE:** -40° C~+85° C;
 - WETTING TEMPERATURE:** 265 ± 5° C, 5 ± 0.5s;

PIN DEFINE TABLE			
PIN	SIGNAL	PIN	SIGNAL
A12	GND	B1	GND
A11	/	B2	/
A10	/	B3	/
A9	VBUS	B4	VBUS
A8	/	B5	CC2
A7	D-	B6	D+
A6	D+	B7	D-
A5	CC1	B8	/
A4	VBUS	B9	VBUS
A3	/	B10	/
A2	/	B11	/
A1	GND	B12	GND



(TOP VIEW)
RECOMMENDED P.C.B. LAYOUT (T:1.0~1.2mm)
TOLERANCE UNSPECIFIED ±0.05mm

NO.	PART NAME	Q' TY	MATERIAL	FINISH
5	Back Shell	1	Stainless Steel, T=0.20mm	30u"Ni Min.
4	Front Shell	1	Stainless Steel, T=0.30mm	30u"Ni Min.
3	MID PLATE	1	Stainless Steel, T=0.15mm	No Plating
2	Contact	14	Copper Alloy, T=0.15mm	Au/Ni or Au/Sn/Ni-Plated
1	Housing	1	High temperature plastic	UL94 V-0, Black

CUSTOMER		GENERAL TOLERANCES UNLESS SPECIFIED		APPROVED BY: Song		TITLE: TYPE-C 14P 侧插母座前直后鱼叉脚		东莞市高铨达电子科技有限公司 惠州市高铨达光电科技有限公司	
SIZE A4	UNITS MM[INCH]	X±0.50	X*±5.0°	CHECKED BY:		PART NO.:			
SCALE 1:1	REV. 1	.XX±0.25	.XX*±2.5°	DESIGN BY:		DWG NO.:		SHEET 1/2	
		.XXX±0.15	.XXX*±2.0°						

NO.	COLOR	端子:镀金1u"/外壳镀亮镍	端子:镀金3u"/外壳镀亮镍	端子:镀金1u"+雾锡/外壳镀亮镍	端子:镀金3u"+雾锡/外壳镀亮镍	端子:镀金1u"/外壳镀哑镍
1	WHITE	1014-FGW001	1014-FHW001	1014-FAW001	1014-FBW001	
2	BLACK	1014-FGB001	1014-FHB001	1014-FAB001	1014-FBB001	1014-FGB015