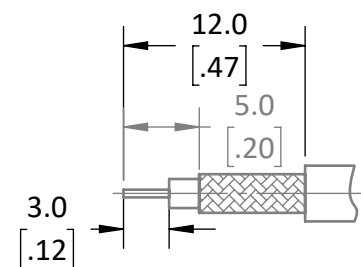
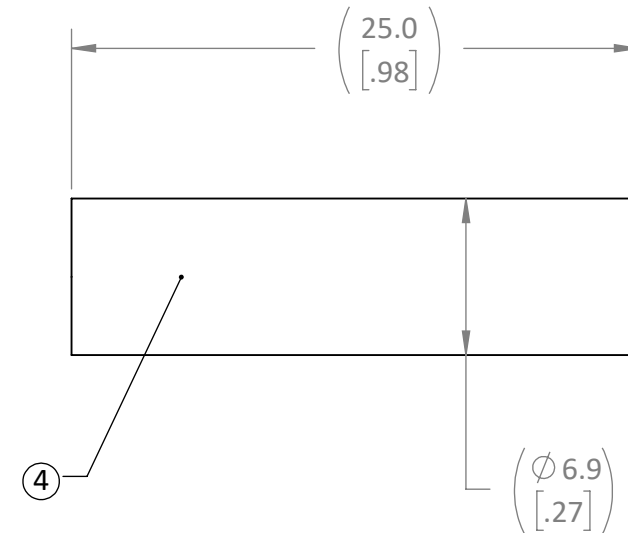
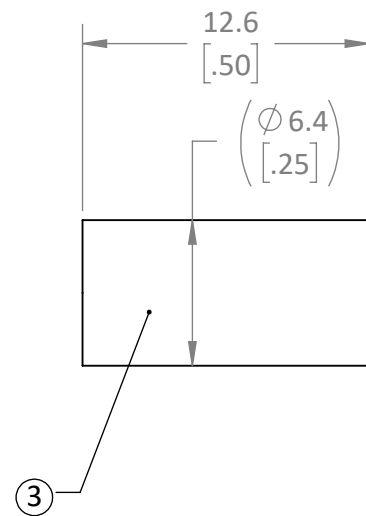
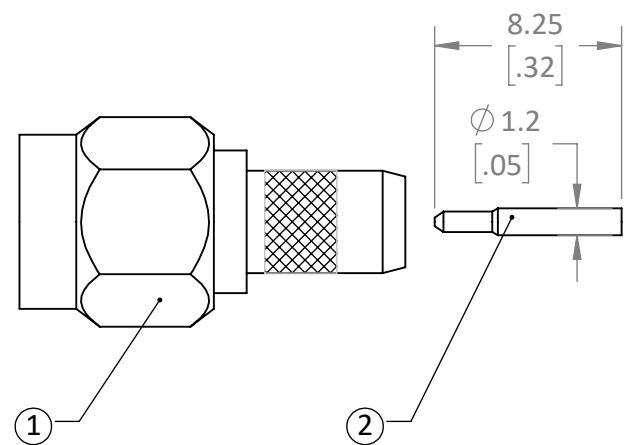
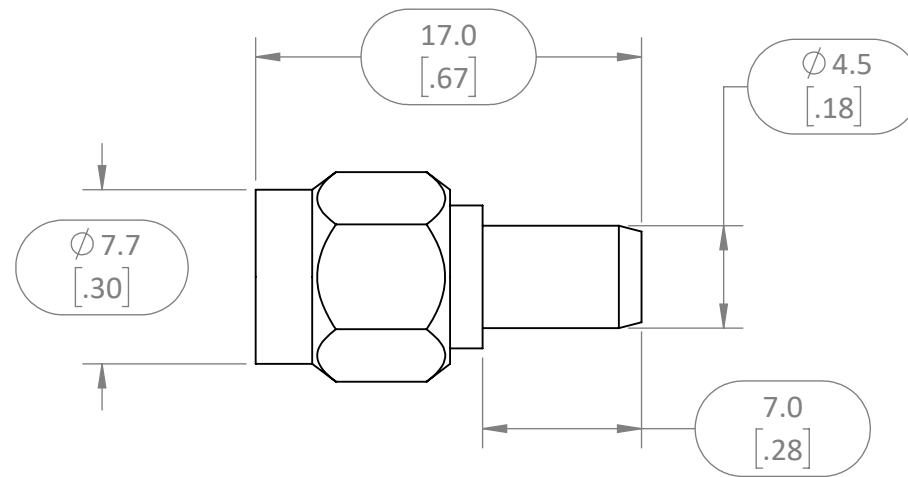
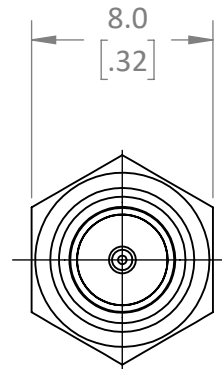


ITEM NUMBER	DESCRIPTION
1	CONNECTOR, SMA TYPE NICKEL/BRASS
2	PIN, SMAM RG58, GOLD/BRASS
3	CRIMP RING RG58, NICKEL/BRASS
4	HEAT SHRINK, POLYOL, 2:1, BLACK

REVISIONS			
REV	DESCRIPTION	DATE	APPV
B	UPDATED MODEL AND DIMENSIONS; ADDED NEW TITLE BLOCK	2-JUL-12	SAH



#### ASSEMBLY INSTRUCTIONS

- Strip the cable to the recommended dimensions.
- Slip heat shrink and crimp ring over stripped cable.
- Solder the pin to the center conductor.
- Insert the pin, center conductor, and insulator into the body until the top of the pin is even with the threaded opening in the body.
- Wrap the braid around the tail of the body and crimp the ring with a 0.213" hex crimp tool (or one that is labeled for use with RG-58 cable).
- Use heat shrink to cover crimp.

#### RECOMMENDED CABLE STRIPPING DIMENSIONS

#### NOTES: (UNLESS OTHERWISE SPECIFIED)

- ALL DIMENSIONS ARE IN MILLIMETERS [IN].
- DIMENSIONS APPLY AFTER FINISHING.
- MANUFACTURE TO BE COMPLIANT WITH EU RoHS DIRECTIVE, USE MATERIALS THAT DO NOT CONTAIN REACH SUBSTANCES OF VERY HIGH CONCERN >1000ppm, AND USE DRC CONFLICT-FREE SOURCED MATERIALS.
- MECHANICAL PROPERTIES
  - DURABILITY: 500 CYCLES
  - RECCOMENDED TORQUE: 0.56 Nm [5.0in lbs]
  - TEMPERATURE RANGE: -55° - +155°C
  - CORROSION (SALT SPRAY): ASTM B-117
- ELECTRICAL SPECIFICATIONS ARE LISTED FOR REFERENCE ONL SEE LINX DATA SHEET FOR ELECTRICAL PROPERTIES.
  - IMPEDANCE: 50Ω
  - INSERTION LOSS: .075xvf(GHz) [CONNECTOR]
- UNLISTED DIMENSIONS ARE CONTROLLED BY SOLID MODEL AT LATEST REVISION.
- PACKAGE KITS INDIVIDUALLY AND PLACE IN LOT BAGS.
- LABEL LOT BAGS AND BOXES IAW LINX LABEL DRAWING [MEC-LBL-4x2.5-PAPER-ID]

**WARNING:** THIS DRAWING CONTAINS PROPRIETARY INFORMATION THAT IS THE SOLE PROPERTY OF LINX TECHNOLOGIES, AND SHALL BE TREATED AS SUCH. NO DISCLOSURE OR REPRODUCTION OF THIS DOCUMENT IS PERMITTED, IN WHOLE OR IN PART, WITHOUT THE EXPRESS WRITTEN PERMISSION OF LINX TECHNOLOGIES OR ITS DESIGNATED AGENTS.

**STE** 159 ORT LANE  
MERLIN, OR 97532  
connectivity

MATERIAL:	INTERPRET DIMENSIONS AND TOLERANCES PER ASME Y14.5.	PROJECTION:
WEIGHT:	.X ±.2 .XX ±.10 .XXX ±.050	ANGLES: ±1° SURFACE: ✓
FINISH: VAR	DRAWN: AJVM ENGR:	DT: 7/27/2022 DT: 10-JUL-08

TITLE: SMA MALE CABLE END CRIMP FOR COAX CABLE

SIZE	DWG. NO.	REV
<b>B</b>	C-CON SMA007-R58	<b>B</b>
SCALE: 3:1	DO NOT SCALE DRAWING	SHEET 1 OF 1