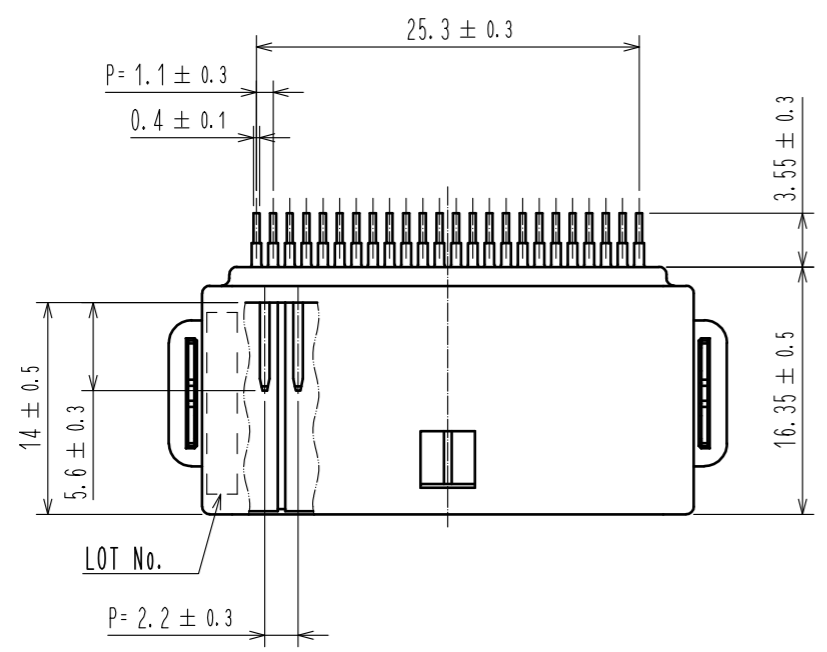
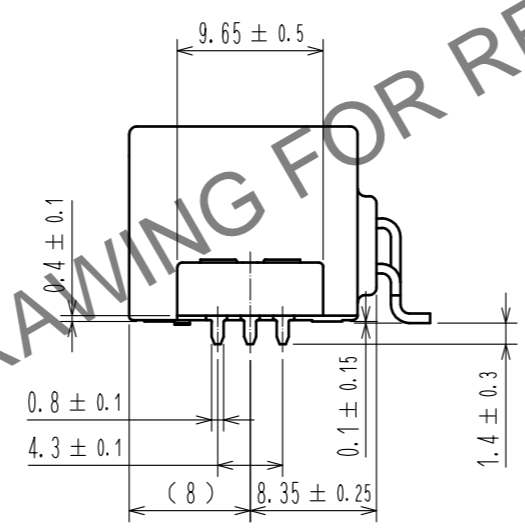
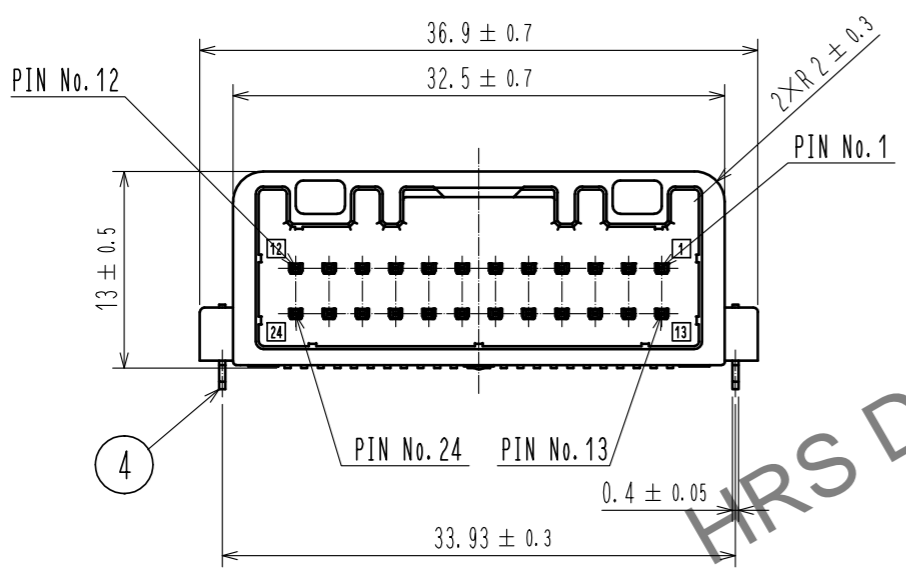
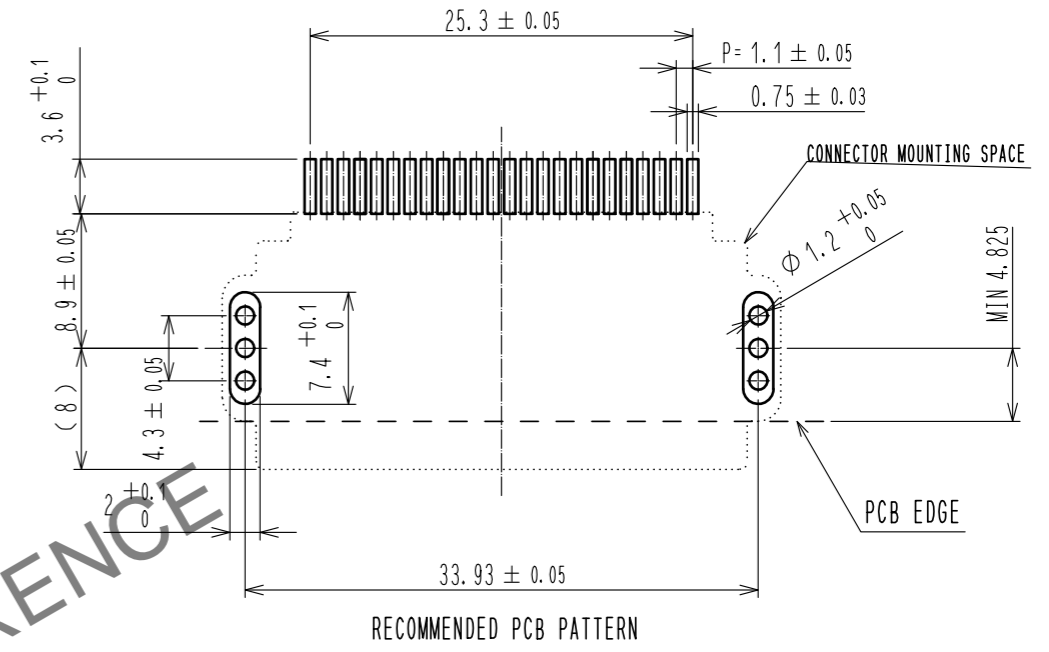


Mar.1.2026 Copyright 2026 HIROSE ELECTRIC CO., LTD. All Rights Reserved.
In case of consideration for using Automotive equipment / device which demand high reliability, kindly contact our sales window correspondents.

ELV. RoHS COMPLIANT

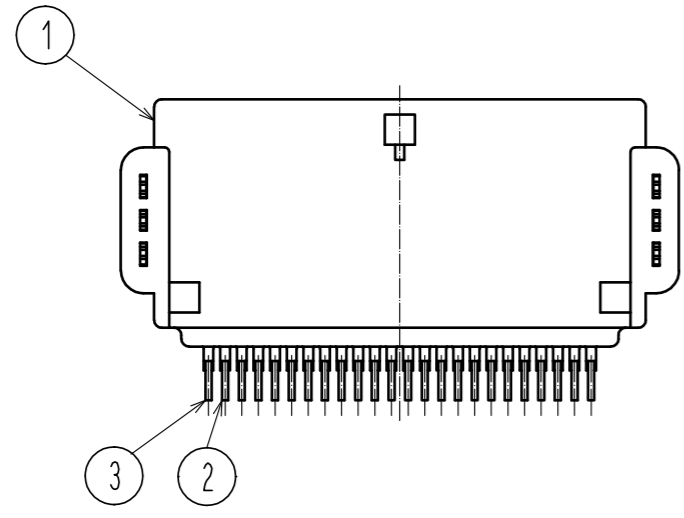
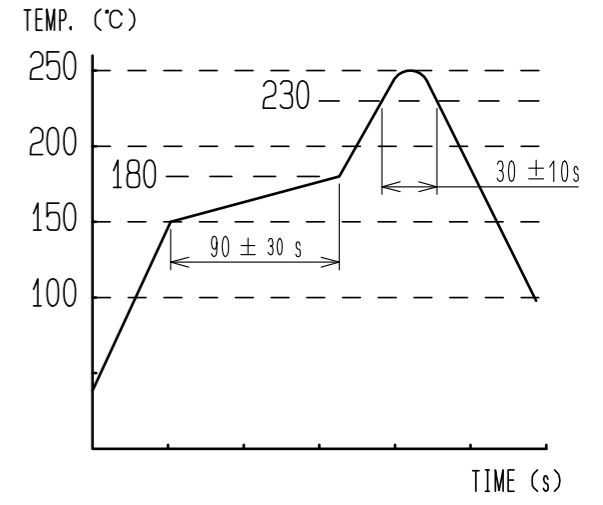


PIN ASSIGNMENT
12 24 11 23 10 22 9 21 8 20 7 19 6 18 5 17 4 16 3 15 2 14 1 13



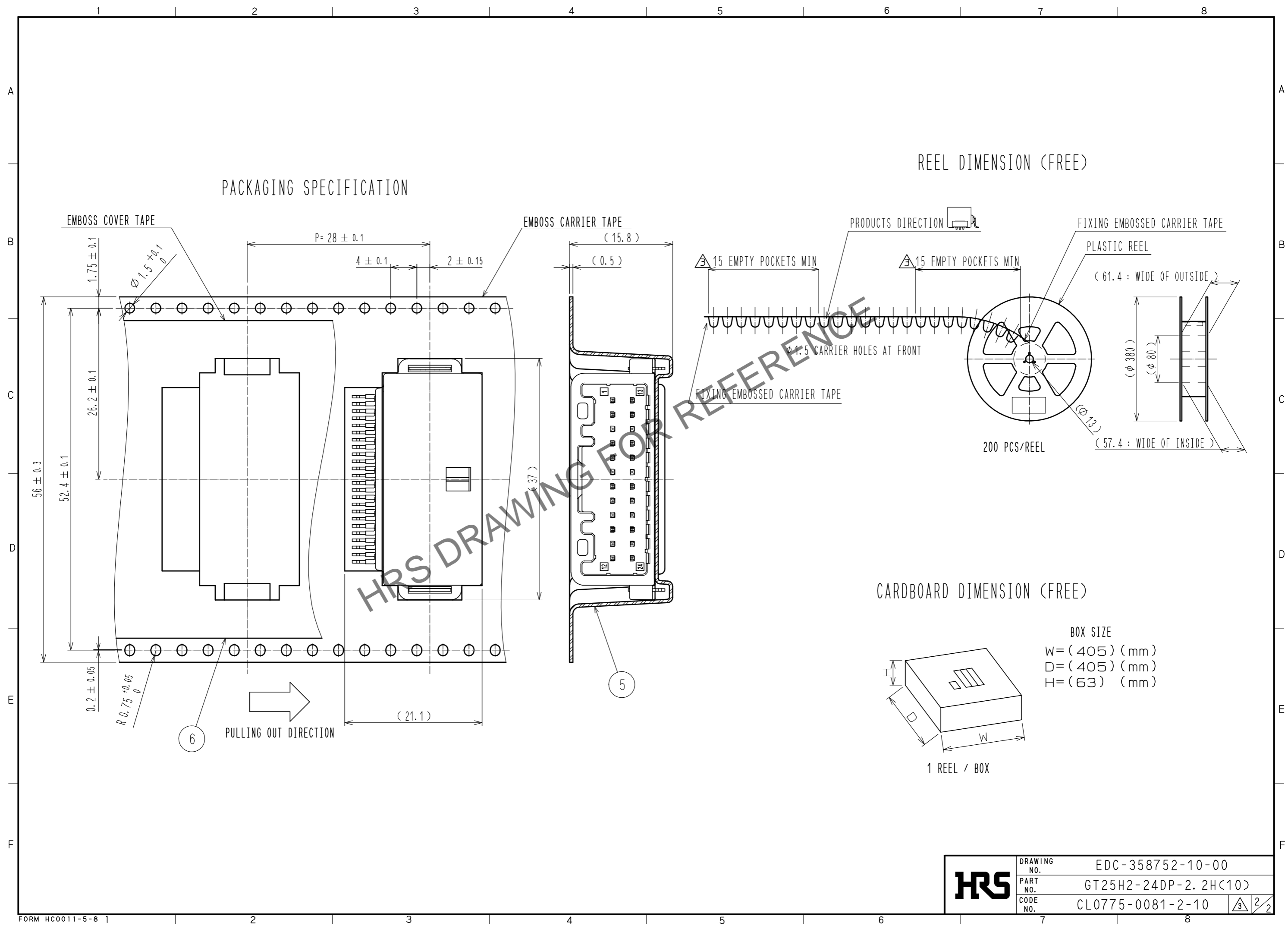
NOTE1. RECOMMENDED TEMPERATURE PROFILE FOR REFLOW (REFER TO RIGHT FIG.) USED REFLOW SYSTEM
: IR IN THE AIR OR NITROGEN
NO. OF CYCLES : 2 MAX
PEAK : 250°C
OVER 230°C : 20~40s
PREHEAT : 150~180°C
60~120s

△2. DELETE
3. LEAD CO-PLANARITY SHALL BE 0.1mm MAX.
4. RECOMMENDED PCB THICKNESS IS 1.6mm
5. RECOMMENDED SOLDER THICKNESS IS 0.15mm.



3	BRASS	△3	CONTACT AREA, LEAD AREA: TIN PLATING 0.5µm min UNDER PLATING: NICKEL 0.5µm min	6	POLYESTER △3		
2	BRASS	△3	CONTACT AREA, LEAD AREA: TIN PLATING 0.5µm min UNDER PLATING: NICKEL 0.5µm min	5	PS		
1	PA		BLACK	4	BRASS	△3 LEAD AREA: TIN PLATING 0.5µm min UNDER PLATING: NICKEL 0.5µm min	
NO.	MATERIAL		FINISH . REMARKS	NO.	MATERIAL	FINISH . REMARKS	
UNITS mm	⊙	SCALE 2 : 1	COUNT 7	DESCRIPTION OF REVISIONS DIS-T-00024070	DESIGNED AN. SAIKI	CHECKED TY. MOGI	DATE 20250602
APPROVED : AR. SHIRAI		20180622		DRAWING NO. EDC-358752-10-00			
CHECKED : HS. OZAWA		20180622		PART NO. GT25H2-24DP-2. 2H<10>			
DESIGNED : YT. HAYAKAWA		20180622		CODE NO. CL0775-0081-2-10			
DRAWN : GYEONGMIN LEE		20180622		△3 1/2			

Mar.1.2026 Copyright 2026 HIROSE ELECTRIC CO., LTD. All Rights Reserved.
 In case of consideration for using Automotive equipment / device which demand high reliability, kindly contact our sales window correspondents.



HRS	DRAWING NO.	EDC-358752-10-00
	PART NO.	GT25H2-24DP-2.2HC(10)
	CODE NO.	CL0775-0081-2-10
		$\triangle 3$ 2/2