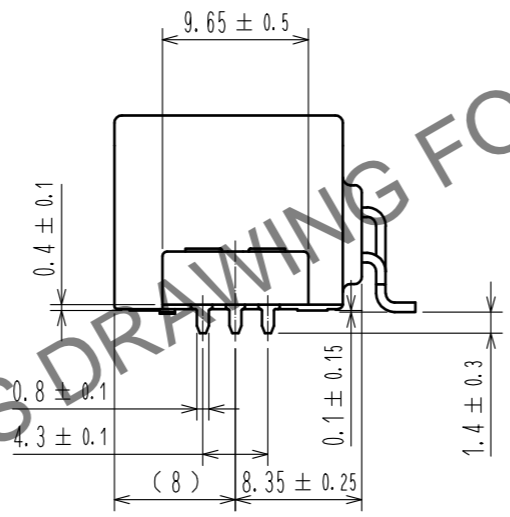
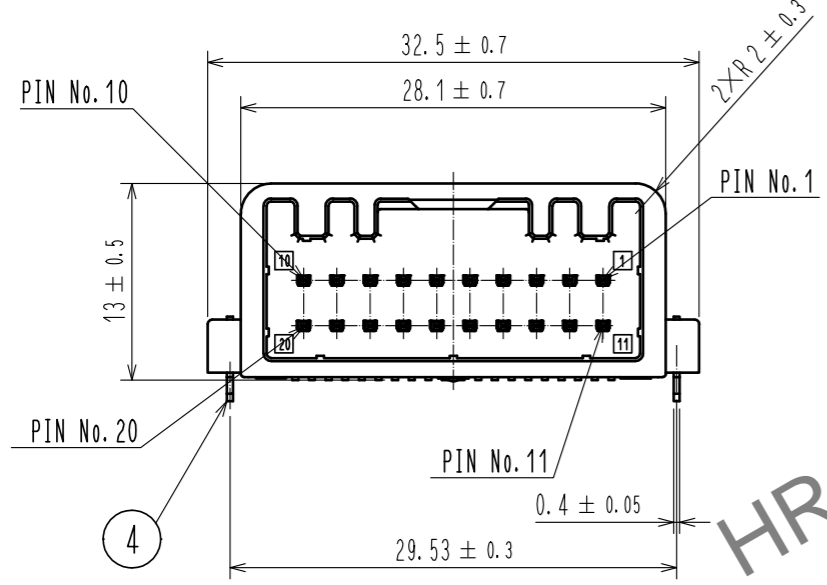
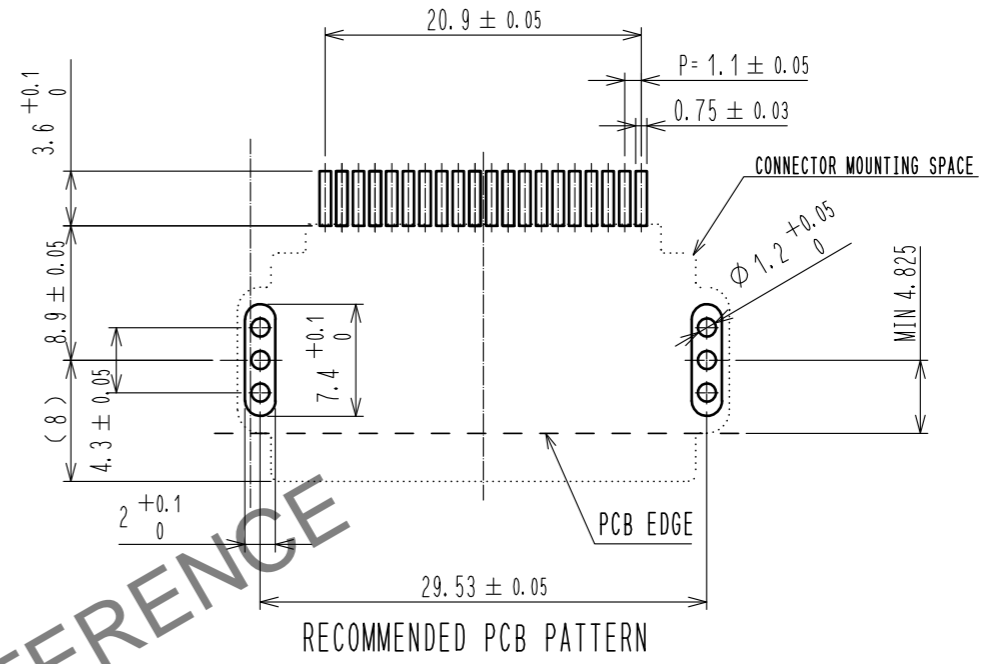
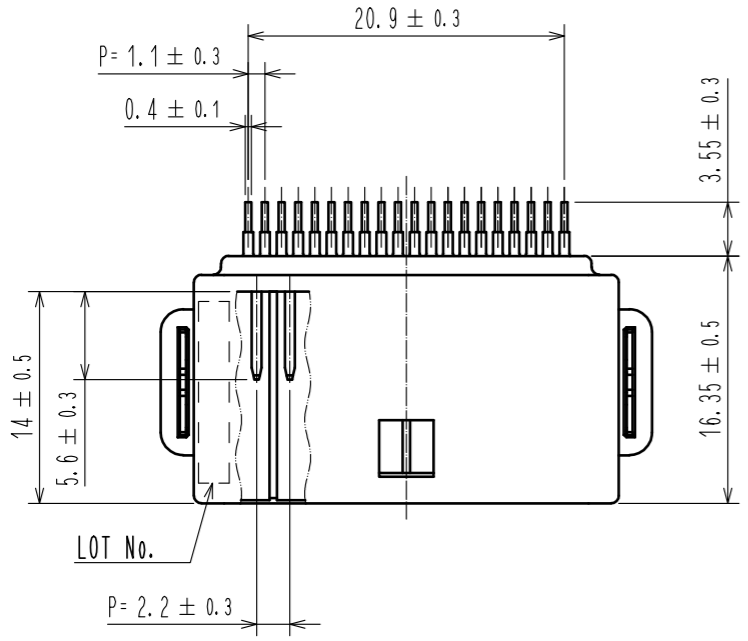


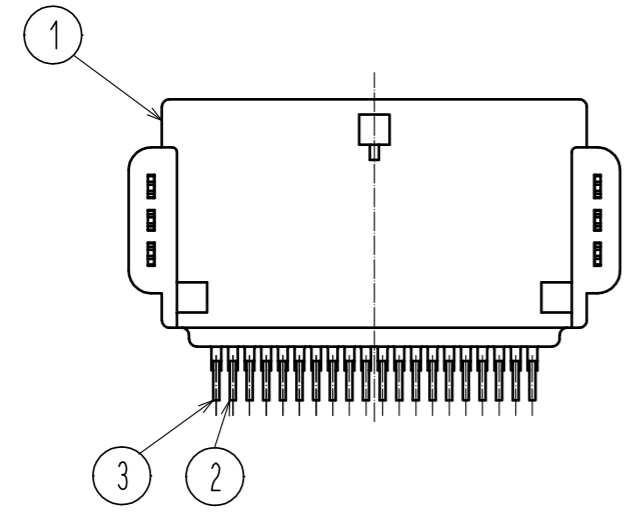
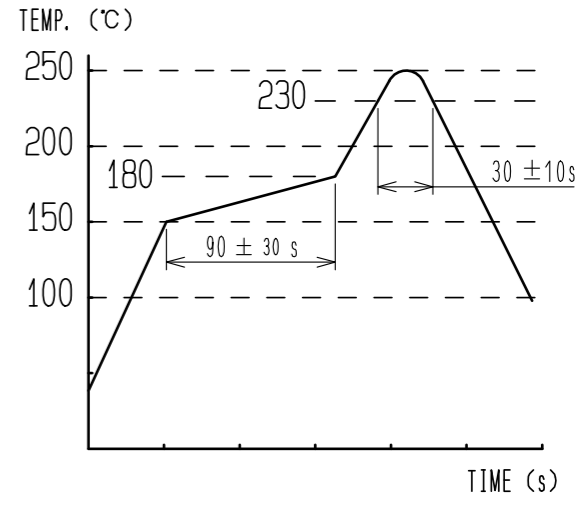
Feb.1.2026 Copyright 2026 HIROSE ELECTRIC CO., LTD. All Rights Reserved.
In case of consideration for using Automotive equipment / device which demand high reliability, kindly contact our sales window correspondents.

ELV. RoHS COMPLIANT

PIN ASSIGNMENT
10 20 9 19 8 18 7 17 6 16 5 15 4 14 3 13 2 12 1 11

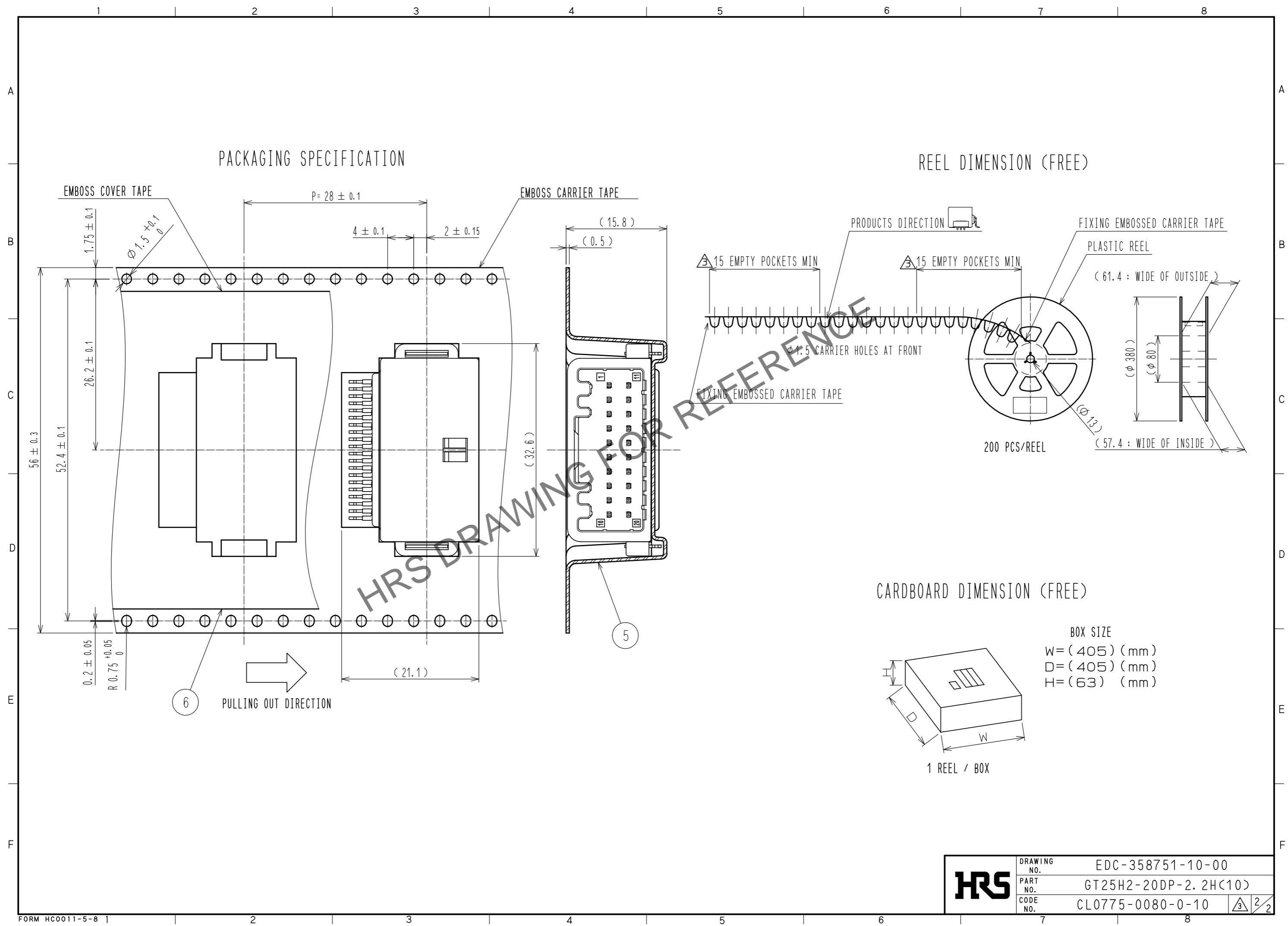


- NOTE1. RECOMMENDED TEMPERATURE PROFILE FOR REFLOW (REFER TO RIGHT FIG.) USED REFLOW SYSTEM
 : IR IN THE AIR OR NITROGEN
 NO. OF CYCLES : 2 MAX
 PEAK : 250°C
 OVER 230°C : 20~40s
 PREHEAT : 150~180°C
 60~120s
- △2. DELETE
 3. LEAD CO-PLANARITY SHALL BE 0.1mm MAX.
 4. RECOMMENDED PCB THICKNESS IS 1.6mm
 5. RECOMMENDED SOLDER THICKNESS IS 0.15mm.



3	BRASS	△3	CONTACT AREA, LEAD AREA: TIN PLATING 0.5μm min UNDER PLATING: NICKEL 0.5μm min	6	POLYESTER △3	
2	BRASS	△3	CONTACT AREA, LEAD AREA: TIN PLATING 0.5μm min UNDER PLATING: NICKEL 0.5μm min	5	PS	
1	PA		BLACK	4	BRASS △3	LEAD AREA: TIN PLATING 0.5μm min UNDER PLATING: NICKEL 0.5μm min
NO.	MATERIAL		FINISH . REMARKS	NO.	MATERIAL	FINISH . REMARKS
UNITS mm	⊙	SCALE 2 : 1	COUNT 7	DESCRIPTION OF REVISIONS DIS-T-00024070		DESIGNED AN. SAIKI
APPROVED : AR. SHIRAI		20180622		DRAWING NO. EDC-358751-10-00		CHECKED TY. MOGI
CHECKED : HS. OZAWA		20180622		PART NO. GT25H2-20DP-2. 2H<10>		DATE 20250602
DESIGNED : YT. HAYAKAWA		20180622		CODE NO. CL0775-0080-0-10		
DRAWN : GYEONGMIN LEE		20180622				

Feb.1.2026 Copyright 2026 HIROSE ELECTRIC CO., LTD. All Rights Reserved.
 In case of consideration for using Automotive equipment / device which demand high reliability, kindly contact our sales window correspondents.



HRS	DRAWING NO.	EDC-358751-10-00
	PART NO.	GT25H2-20DP-2.2H<10>
	CODE NO.	CL0775-0080-0-10
		\triangle 2/2