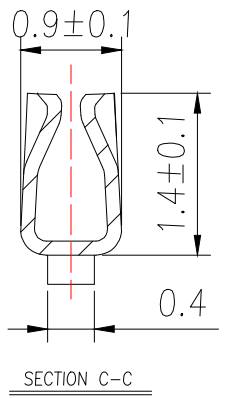
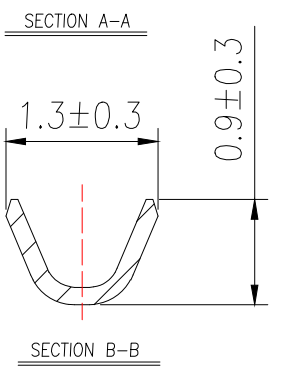
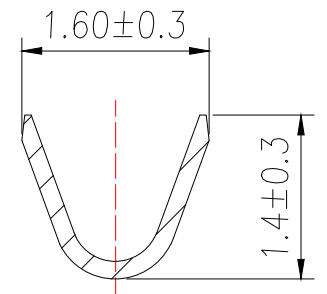
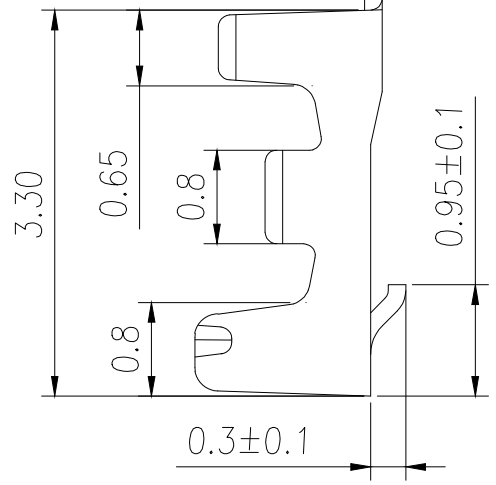


技术要求 Specification:

1. 材质:磷青,表面镀锡;
Material:Phos.Bronze Tin-Plated
镀层:Sn>2.0um
2. 零件外观不得有有害毛刺、尖角、锐边和机械损伤;表面镀层应均匀、光亮、无雾斑、剥层等缺陷;
Parts may not have the appearance of harmful burrs, sharp corners, sharp edges and mechanical damage, surface coating should be uniform, bright, no fog spots, delamination and other defects
3. 适用线号:AWG#32-#28
Wirerange: AWG#32-#28



制图 DRAWN	变更内容 DESCRIPTION	日期 DATE	GENERAL TOLERANCE		制图 DRAWING	EMMA	料号 PART NO.	BX-MX1.25-DZ	版本 REV.	A											
			X.±0.30	X.*±1*							审核 CHECK	EVA	品名 TITLE	MX1.25MM TERMINAL	页次 SHEET	1/1					
			.X±0.20														核准 APPROVAL	JADE	客户料号 CUTM.NO.		
			.XX±0.10																		

