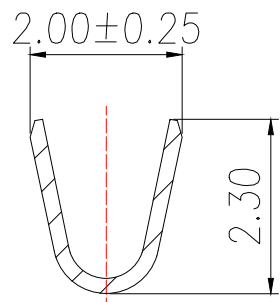
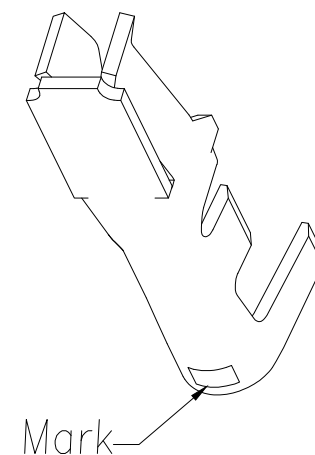
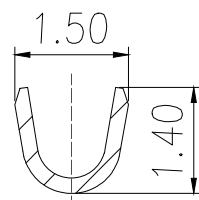


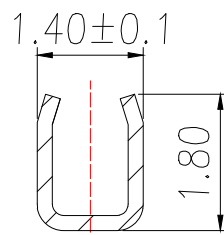
料带图 比率: 1:2



SECTION A-A



SECTION B-B



SECTION C-C

Specification:

1. Material: Phos.Bronze Tin-Plated

Coating: Sn>80u",

2. Applicable wire: AWG#30-#24

4. The appearance of the parts shall not have harmful burrs, sharp corners, sharp edges and mechanical damage: the surface plating should be uniform and bright, without fog spots, peeling and other defects;

制图 DRAWN	变更内容 DESCRIPTION	日期 DATE	GENERAL TOLERANCE		制图 DRAWING	料号 PART NO.	版本 REV.
			X.±0.30	X.*±5°	EMMA	BX-HY2.0-DZ	A
			.X±0.25	X.X*±1°	审核 CHECK	EVA	品名 TITLE
			.XX±0.15		核准 APPROVAL	JADE	客户料号 CUTM.NO.
					单位 UNITS	MM	页次 SHEET
					比例 SCALE	1:1	1/1

