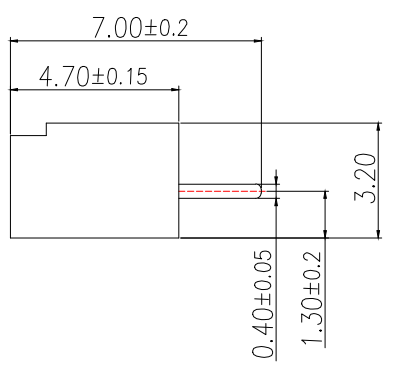
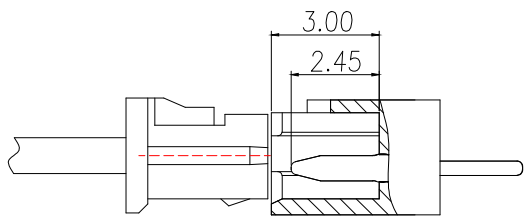
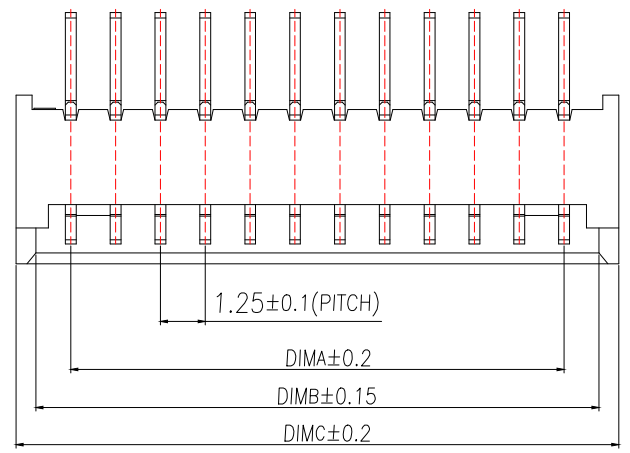


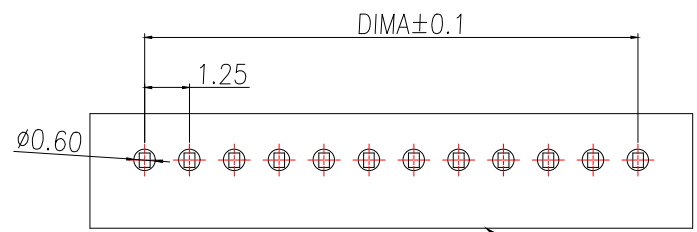
LOCK CONFIGURATION (锁扣位置)



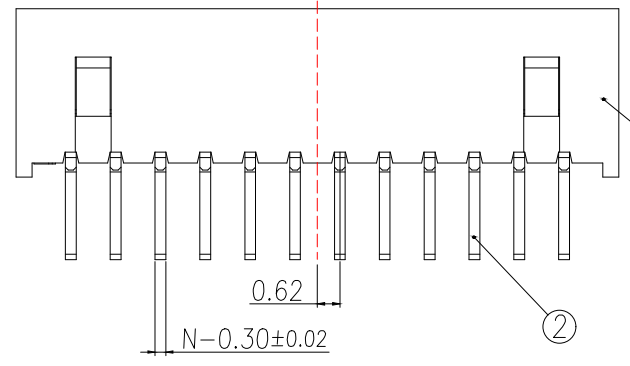
序号	品名	材质
1	1.25 Pitch S/T Wire To Board Housing DIP(H=4.7)	PA66 UL94V-2 Yellow
2	1.25 Pitch S/T Wire To Board Terminal DIP(H=4.7)	Copper Alloy/ Tin Plating



SECTION A-A



通用线路板(PCB LAYOUT)



Technical Index:

- 1.The surface of the plastic parts should be smooth,no rough edges,no obvious shrinkage,defects,cracks and other phenomena)
- 2.Lock Configuration: 2 to 3Pin is 1, ≥4Pin is 2
- 3.Temperature range: -40°C~+85°C.
- 4.Rated voltage: 125V, AC/DC.
- 5.Contact resistance: ≤0.02Ω.
- 6.Insulation resistance: ≥100MΩ

Part No	Pin	A	B	C
BX-MX1.25-2PZZ-Y	2	1.25	3.20	4.30
BX-MX1.25-3PZZ-Y	3	2.50	4.45	5.55
BX-MX1.25-4PZZ-Y	4	3.75	5.70	6.80
BX-MX1.25-5PZZ-Y	5	5.00	6.95	8.05
BX-MX1.25-6PZZ-Y	6	6.25	8.20	9.30
BX-MX1.25-7PZZ-Y	7	7.50	9.45	10.55
BX-MX1.25-8PZZ-Y	8	8.75	10.70	11.80
BX-MX1.25-9PZZ-Y	9	10.00	11.95	13.05
BX-MX1.25-10PZZ-Y	10	11.25	13.20	14.30
BX-MX1.25-11PZZ-Y	11	12.50	14.45	15.55
BX-MX1.25-12PZZ-Y	12	13.75	15.70	16.80
BX-MX1.25-13PZZ-Y	13	15.00	16.95	18.05
BX-MX1.25-14PZZ-Y	14	16.25	18.20	19.30
BX-MX1.25-15PZZ-Y	15	17.50	19.45	20.55
BX-MX1.25-16PZZ-Y	16	18.75	20.70	21.80
BX-MX1.25-17PZZ-Y	17	20.00	21.95	23.05
BX-MX1.25-18PZZ-Y	18	21.25	23.20	24.30
BX-MX1.25-19PZZ-Y	19	22.50	24.45	25.55
BX-MX1.25-20PZZ-Y	20	23.75	25.70	26.80

制图 DRAWN	变更内容 DESCRIPTION	日期 DATE	GENERAL TOLERANCE		制图 DRAWING	EMMA	料号 PART NO.	BX-MX1.25-NPZZ-Y	版本 REV.	A										
			X.±0.50	X'.:±5°							审核 CHECK	EVA	品名 TITLE	1.25 PITCH H4.7 S/T WIRE TO BOARD DIP CONN.	页次 SHEET	1/1				
			.X±0.20	X.X':±3°													核准 APPROVAL	JADE	客户料号 CUTM.NO.	
			.XX±0.10	X.XX':±1°																