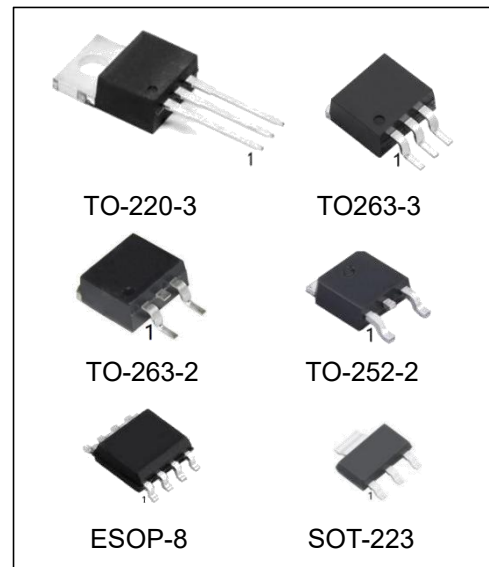


## 3-Terminal Adjustable Negative Regulator

### Features

- Output voltage adjustable from  $-1.2V$  to  $-37V$
- 1.5A output current guaranteed,  $-40^{\circ}C$  to  $+125^{\circ}C$
- Line regulation typically  $0.01\%/V$
- Excellent thermal regulation,  $0.002\%/W$
- Excellent rejection of thermal transients
- Temperature-independent current limit
- Internal thermal overload protection
- 77 dB ripple rejection
- 50 ppm/ $^{\circ}C$  temperature coefficient
- Load regulation typically 0.3%
- P+ Product Enhancement tested
- Output is short circuit protected



### Ordering Information

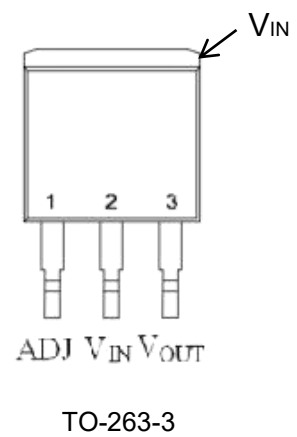
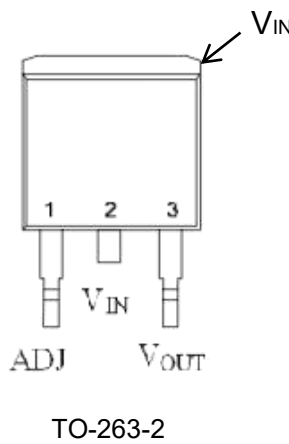
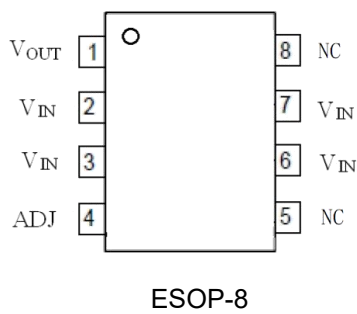
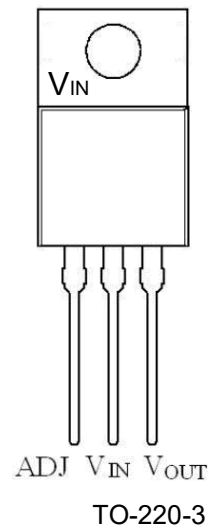
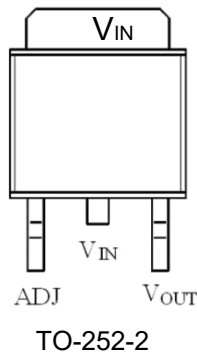
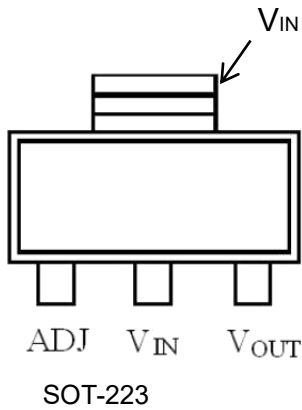
DEVICE	Package Type	MARKING	Packing	Packing Qty
LM337T/HG	TO-220-3	LM337	TUBE	50pcs/tube 1000pcs/box
LM337MDT/TR-HG	TO-252-2	LM337	REEL	2500pcs/reel
LM337MP/TR-HG	SOT-223	N02A	REEL	2500pcs/reel
LM337S/TR-HG	TO-263-3	LM337	REEL	500pcs/reel
LM337S2/TR-HG	TO-263-2	LM337	REEL	500pcs/reel
LM337ME/TR-HG	ESOP-8	LM337	REEL	2500pcs/reel

## General Description

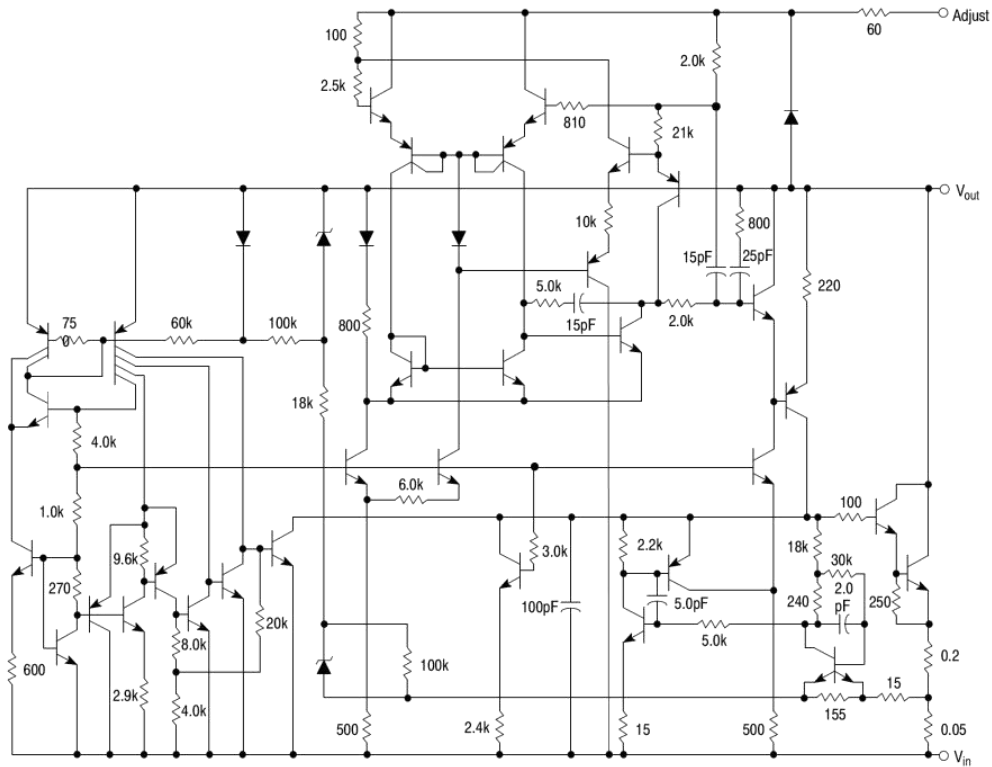
The LM337 are adjustable 3-terminal negative voltage regulators capable of supplying in excess of  $-1.5A$  over an output voltage range of  $-1.2V$  to  $-37V$ . These regulators are exceptionally easy to apply, requiring only 2 external resistors to set the output voltage and 1 output capacitor for frequency compensation. The circuit design has been optimized for excellent regulation and low thermal transients.

The LM337 serve a wide variety of applications including local on-card regulation, programmable-output voltage regulation or precision current regulation. The LM337 is ideal complements to the LM337 adjustable positive regulators.

## Pin Configuration



## Block Diagram



## Absolute Maximum Ratings \*1

Characteristic		Value	Unit
Power dissipation		Internally limited	
Input- output voltage differential		40	V
Operating junction temperature range*2	TO-263/TO-220/TO-252 /SOT-223	-40 ~ +125	°C
	ESOP-8	-40 ~ +85	°C
Storage temperature		-65 ~ +150	°C
Lead temperature (soldering, 10 sec.)	TO-220/TO-263	245	°C
	TO-252/SOT-223/ESOP-8	260	
ESD rating		2k	V

**Note:**\*1. Absolute Maximum Ratings indicate limits beyond which damage to the device may occur. Operating Ratings indicate conditions for which the device is intended to be functional, but specific performance is not ensured.

\*2. Operating junction temperature range: -40°C to +125°C. This product is designed for industrial grade applications. For automotive grade versions compliant with AEC-Q100, please conduct internal screening per the standard or contact our sales team for availability.

**Electrical Characteristics \*1**

Characteristics	Test conditions	Min	Typ	Max	Unit
Line regulation	$T_j=25^{\circ}\text{C}, 3\text{V} \leq  V_{\text{IN}}-V_{\text{OUT}}  \leq 40\text{V}$ *2 $I_L=10\text{mA}$		0.01	0.04	%/V
Load regulation	$T_j=25^{\circ}\text{C}, 10\text{mA} \leq I_{\text{OUT}} \leq I_{\text{MAX}}$		0.3	1.0	%
Thermal regulation	$T_j=25^{\circ}\text{C}, 10\text{ms pulse}$		0.003	0.04	%/W
Adjustment pin current			65	100	$\mu\text{A}$
Adjustment pin current charge	$10\text{mA} \leq I_L \leq I_{\text{MAX}}, T_A=25^{\circ}\text{C}$ $3\text{V} \leq  V_{\text{IN}}-V_{\text{OUT}}  \leq 40\text{V}$		2	5	$\mu\text{A}$
Reference voltage	$T_j=25^{\circ}\text{C}$ *3 $3\text{V} \leq  V_{\text{IN}}-V_{\text{OUT}}  \leq 40\text{V}$ *3 $10\text{mA} \leq I_{\text{OUT}} \leq I_{\text{MAX}}, P \leq P_{\text{MAX}}$	-1.213 -1.200	-1.250 -1.250	-1.287 -1.300	V
Line regulation	$3\text{V} \leq  V_{\text{IN}}-V_{\text{OUT}}  \leq 40\text{V}$ *2		0.02	0.07	%/V
Load regulation	$10\text{mA} \leq I_{\text{OUT}} \leq I_{\text{MAX}}$ *2		0.3	1.5	%
Temperature stability	$T_{\text{MIN}} \leq T_j \leq T_{\text{MAX}}$		0.6		%
Minimum load current	$ V_{\text{IN}}-V_{\text{OUT}}  \leq 40\text{V}$ $ V_{\text{IN}}-V_{\text{OUT}}  \leq 10\text{V}$		2.5 1.5	10 6	mA
Current limit	$ V_{\text{IN}}-V_{\text{OUT}}  \leq 15\text{V}$ $ V_{\text{IN}}-V_{\text{OUT}}  = 40\text{V}, T_j=25^{\circ}\text{C}$	1.5 0.15	2.2 0.4	3.7	A
RMS output noise,% of VOUT	$T_j=25^{\circ}\text{C}, 10\text{Hz} \leq f \leq 10\text{kHz}$		0.003		%
Ripple rejection ratio	$V_{\text{OUT}} = -10\text{V}, f = 120\text{Hz}, C_{\text{ADJ}} = 10\mu\text{F}$	66	60 77		dB
Long- term stability	$T_j=125^{\circ}\text{C}, 1000\text{Hours}$		0.3	1	%
Thermal resistance, junction to case	SOT 223 TO 220 TO 252		2.3 12 4	3 15	$^{\circ}\text{C}/\text{W}$
Thermal resistance, junction to ambient (no heat sink)	SOT 223 TO 220 TO 252		35 140 50		$^{\circ}\text{C}/\text{W}$

\*1 : Unless otherwise specified, these specifications apply  $-40^{\circ}\text{C} \leq T_j \leq +125^{\circ}\text{C}$  for the LM337;  $V_{\text{IN}} - V_{\text{OUT}} = 5\text{V}$ ; and  $I_{\text{OUT}} = 0.5\text{A}$  for the TO252 , SOT223 and TO220 packages. Although power dissipation is internally limited, these specifications are applicable for power dissipations of 2W for the SOT223 (see Application Hints), and 20W for the TO252 , and TO220 .  $I_{\text{MAX}}$  is 1.5A for the TO252 , SOT223 and TO220 packages.

\*2: Regulation is measured at constant junction temperature , using pulse testing with a low duty cycle . Changes in output voltage due to heating effects are covered under the specification for thermal regulation. Load regulation is measured on the output pin at a point 1/8" below the base of the TO252 packages.

\*3: Selected devices with tightened tolerance reference voltage available .

## Application Summary

When a value for  $\theta_{(H-A)}$  is found using the equation shown, a heatsink must be selected that has a value that is less than or equal to this number.

### Heatsinking SOT223 Package Parts

The SOT223 packages use a copper plane on the PCB and the PCB itself as a heatsink. To optimize the heat sinking ability of the plane and PCB, solder the tab of the package to the plane.

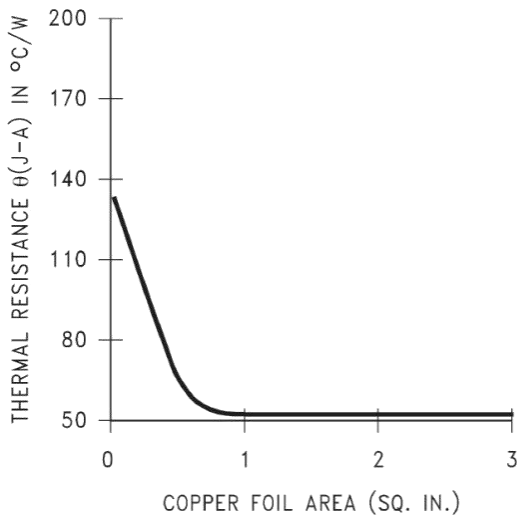


Fig.  $\theta_{(J-A)}$  vs Copper (2 ounce) Area for the SOT223 Package

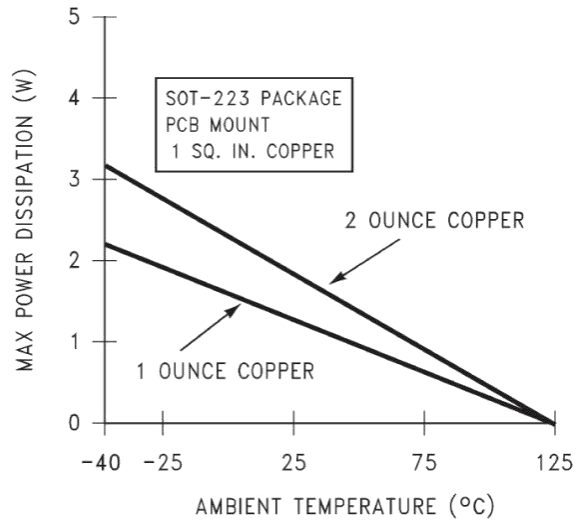
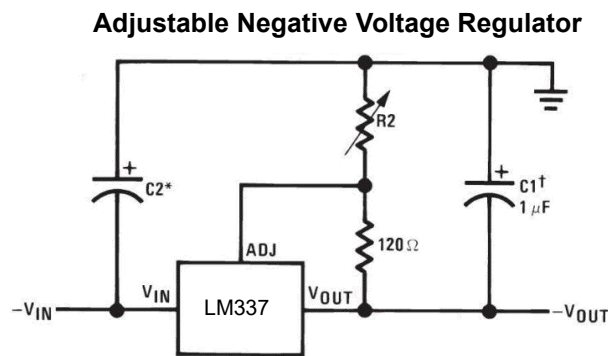


Fig. Maximum Power Dissipation vs.  $T_{AMB}$  for the SOT223 Package

## Typical Application



Full output current not available at high input-output voltages

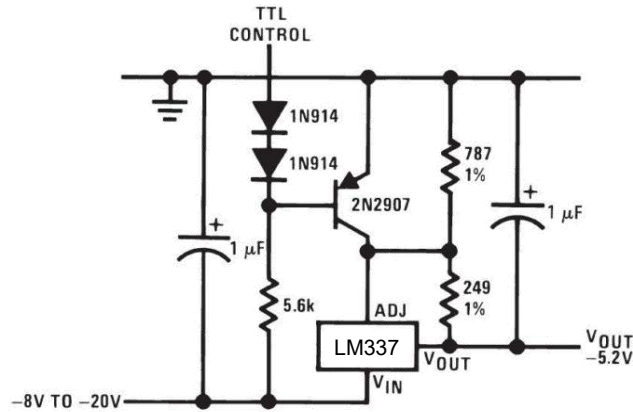
$$-V_{OUT} = -1.25V \left( 1 + \frac{R_2}{120} \right) + (-I_{ADJ} * R_2)$$

†  $C_1 = 1 \mu\text{F}$  solid tantalum or 10  $\mu\text{F}$  aluminum electrolytic required for stability

\*  $C_2 = 1 \mu\text{F}$  solid tantalum is required only if regulator is more than 4" from power-supply filter capacitor

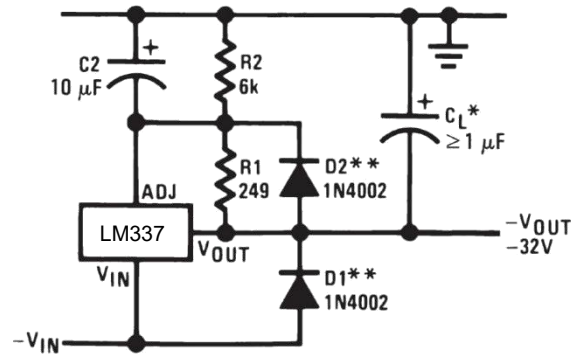
Output capacitors in the range of 1  $\mu\text{F}$  to 1000  $\mu\text{F}$  of aluminum or tantalum electrolytic are commonly used to provide improved output impedance and rejection of transients

**-5.2V Regulator with Electronic Shutdown\***



\*Minimum output = -1.3V when control input is low

**Negative Regulator with Protection Diodes**

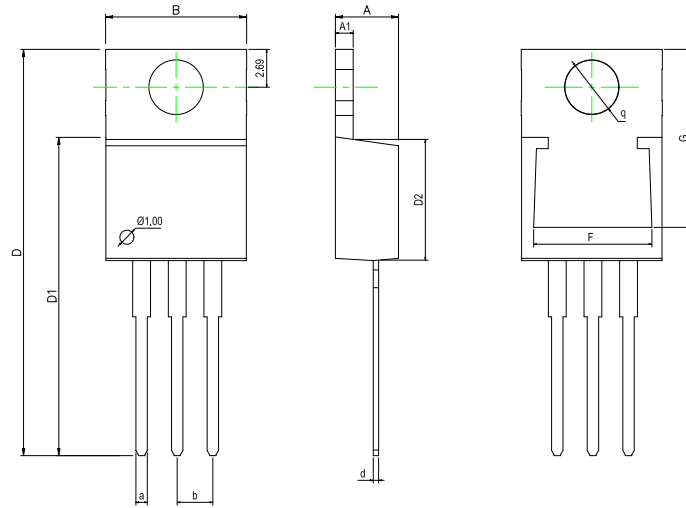


\*When  $C_L$  is larger than  $20\ \mu\text{F}$ , D1 protects the LM137 in case the input supply is shorted

\*\*When  $C_2$  is larger than  $10\ \mu\text{F}$  and  $-V_{\text{out}}$  is larger than  $-25\text{V}$ , D2 protects the LM137 in case the output is shorted

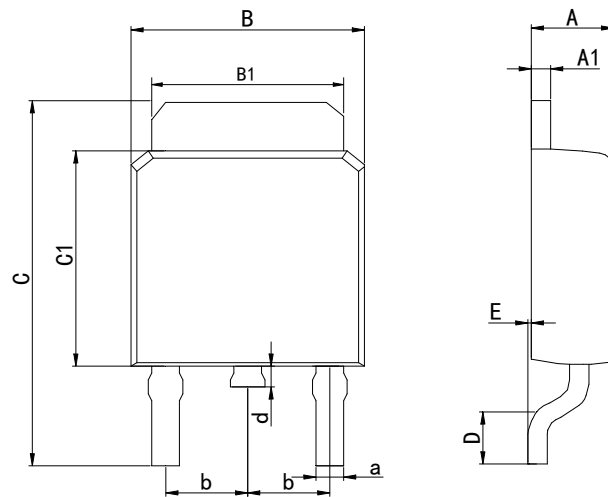
## Physical Dimensions

### TO-220-3



Dimensions In Millimeters(TO-220-3)												
Symbol:	A	A1	B	D	D1	D2	F	G	a	d	b	q
Min:	4.45	1.22	10	28.2	22.22	8.50	8.30	12.55	0.71	0.33	2.54	3.80
Max:	4.62	1.32	10.4	28.9	22.62	9.10	8.55	12.75	0.97	0.42	BSC	TYP

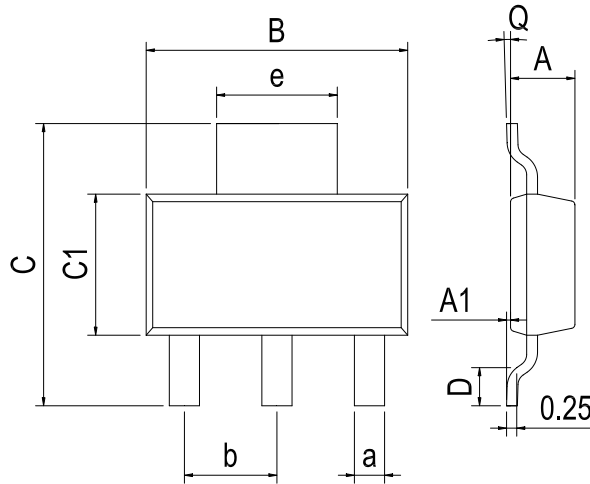
### TO-252-2



Dimensions In Millimeters(TO-252-2)											
Symbol:	A	A1	B	B1	C	C1	D	E	a	d	b
Min:	2.10	0.45	6.40	5.10	9.20	5.30	0.90	0	0.50	0.60	2.28
Max:	2.50	0.70	6.80	5.50	10.6	6.30	1.75	0.23	0.80	1.20	BSC

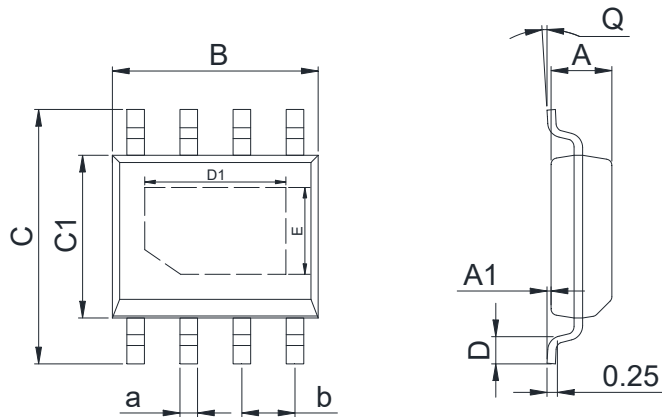
## Physical Dimensions

### SOT-223



Dimensions In Millimeters(SOT-223)										
Symbol:	A	A1	B	C	C1	D	Q	a	b	e
Min:	1.50	0.05	6.30	6.70	3.30	0.65	0°	0.66	2.30 BSC	3.00 BSC
Max:	1.70	0.20	6.70	7.30	3.70	1.10	8°	0.84		

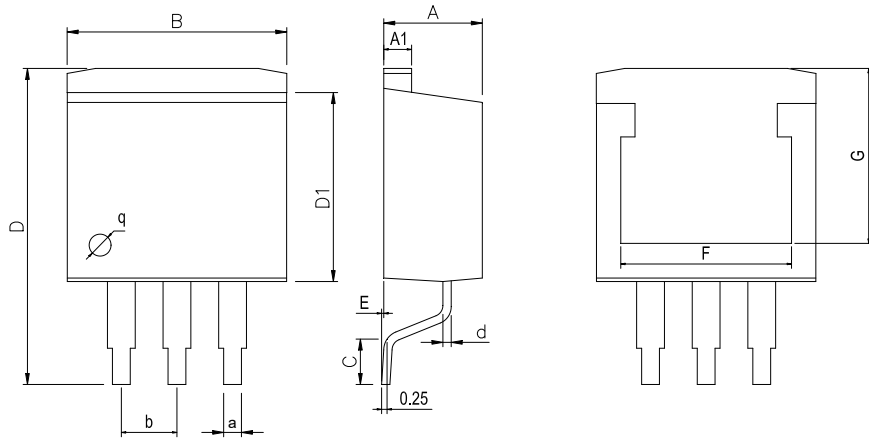
### ESOP-8



Dimensions In Millimeters(ESOP-8)											
Symbol:	A	A1	B	C	C1	D	D1	E	Q	a	b
Min:	1.35	0.05	4.90	5.80	3.80	0.40	3.20	2.31	0°	0.35	1.27 BSC
Max:	1.55	0.20	5.10	6.20	4.00	0.80	3.40	2.51	8°	0.45	

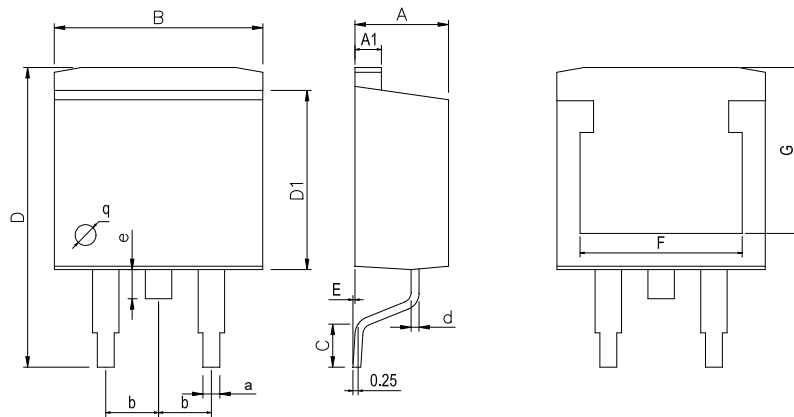
## Physical Dimensions

### TO-263-3



Dimensions In Millimeters(TO-263-3)												
Symbol:	A	A1	B	C	D	D1	E	F	G	a	b	
Min:	4.45	1.22	10	1.89	14.1	8.38	0	7.20	7.20	0.71		2.54BSC
Max:	4.62	1.32	10.4	2.19	15.3	8.89	0.305	8.10	8.10	0.97		

### TO-263-2



Dimensions In Millimeters(TO-263-2)												
Symbol:	A	A1	B	C	D	D1	E	F	G	a	e	b
Min:	4.45	1.22	10	2.25	14.5	8.45	0	7.20	7.20	0.71	1.10	2.54BSC
Max:	4.62	1.32	10.4	2.85	15.4	9.10	0.305	8.10	8.10	0.97	1.70	

## Revision History

REVISION NUMBER	DATE	REVISION	PAGE
V1.0	2014-8	New	1-10
V1.1	2024-11	Update Lead Temperature	3
V1.2	2025-11	Update important statements, Add ESOP-8, TO-263 package	11、 1
V1.3	2025-12	Update TO263-2 and TO263-3 Dimension drawing	9

**IMPORTANT STATEMENT:**

Huaguan Semiconductor reserves the right to change products and services offered without prior notice. Customers should obtain the latest relevant information before placing orders and verify that such information is current and complete. Huaguan Semiconductor assumes no responsibility or liability for altered documents.

Customers are responsible for complying with safety standards and implementing safety measures when using Huaguan Semiconductor products in system design and end-product manufacturing. You assume full responsibility for: selecting the appropriate Huaguan Semiconductor products for your application; designing, validating, and testing your application; and ensuring that your application complies with applicable standards and all other safety, security, or other requirements. This is to prevent potential risks that may lead to personal injury or property damage.

Huaguan Semiconductor products are not approved for use in life support, military, aerospace, or other high-risk applications. Huaguan products are neither intended nor warranted for use in such systems or equipment. Any failure or malfunction may lead to personal injury or severe property damage. Such applications are deemed "Unsafe Use." Unsafe Use includes, but is not limited to: surgical and medical equipment, nuclear energy control equipment, aircraft or spacecraft instruments, control or operation of vehicle power, braking, or safety systems, traffic signal instruments, all types of safety devices, and any other applications intended to support or sustain life. Huaguan Semiconductor shall not be liable for consequences resulting from Unsafe Use in these fields. Users must independently evaluate and assume all risks. Any issues, liabilities, or losses arising from the use of products beyond their approved applications shall be solely borne by the user. Users may not claim any compensation from Huaguan Semiconductor based on these terms. If any third party claims against Huaguan Semiconductor due to such Unsafe Use, the user shall compensate Huaguan Semiconductor for all resulting damages and liabilities.

Huaguan Semiconductor provides technical and reliability data (including datasheets), design resources (including reference designs), application or other design advice, web tools, safety information, and other resources for its semiconductor products. However, no guarantee is made that these resources are free from defects, and no express or implied warranties are provided. The use of testing and other quality control techniques is limited to Huaguan Semiconductor's quality assurance scope. Not all parameters of each device are tested.

Huaguan Semiconductor's documentation authorizes you to use these resources only for developing applications related to the products described herein. You are not granted rights to any other intellectual property of Huaguan Semiconductor or any third party. Any other reproduction or display of these resources is strictly prohibited. You shall fully indemnify Huaguan Semiconductor and its agents against any claims, damages, costs, losses, and liabilities arising from your use of these resources. Huaguan Semiconductor shall not be held responsible.