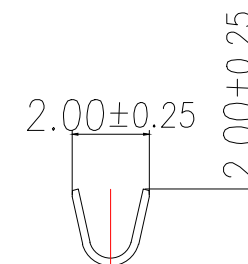
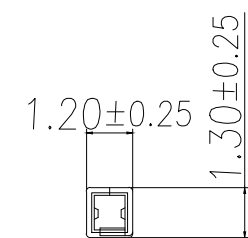


SEC:A-A



SEC:B-B



SEC:C-C

Technical Index:

1. Temperature range: $-25^{\circ}\text{C}\sim 85^{\circ}\text{C}$.
2. Rated voltage: 250V DC/AC(rms).
3. Rated current: 5A AC, DC.
4. Contact resistance: $\leq 20\text{m}\Omega$.
5. Dielectric withstanding voltage: 1500V AC/minute.
6. Insulation resistance: $\geq 1000\text{M}\Omega$.
7. Apply to gauge: AWG#20~#24.

序号	品名	材质
1	端子	Phosphor Bronze Bright tin plated

制图 DRAWN	变更内容 DESCRIPTION	日期 DATE	GENERAL TOLERANCE		制图 DRAWING	EMMA	料号 PART NO.	BX-MX3.0-2-GDZ	版本 REV.	A
			X.±0.30	X.'±5°						
			.X±0.25	X.X'±1°	审核 CHECK	EVA	品名 TITLE	MX3.0MM TERMINAL	页次 SHEET	1/1
			.XX±0.15		核准 APPROVAL	JADE	客户料号 CUTM.NO.			
					单位 UNITS	MM	比例 SCALE	1:1		