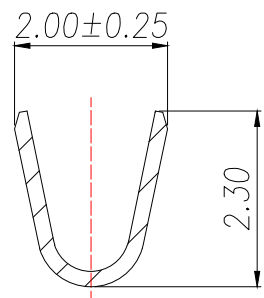
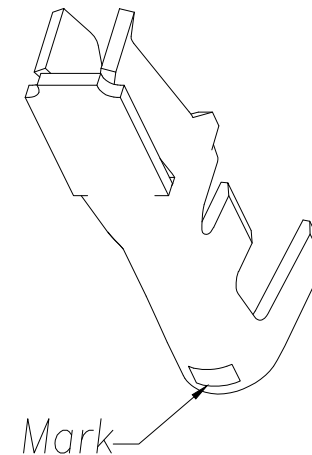
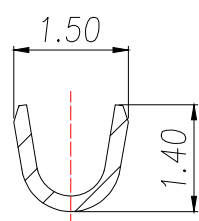


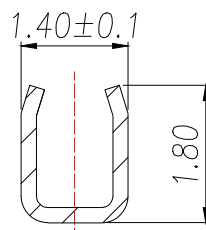
料带图 比率: 1:2



SECTION A-A



SECTION B-B



SECTION C-C

Specification:

1. Material: Phos.Bronze Tin-Plated  
Coating: Sn>80u",

2. Applicable wire: AWG#30-#24

4. The appearance of the parts shall not have harmful burrs, sharp corners, sharp edges and mechanical damage: the surface plating should be uniform and bright, without fog spots, peeling and other defects;

制图 DRAWN	变更内容 DESCRIPTION	日期 DATE	GENERAL TOLERANCE		制图 DRAWING	ROSE
			.X±0.30	X.*±5°	审核 CHECK	LEO
			.XX±0.25	X.X*±1°	核准 APPROVAL	JOHN
			.XXX±0.15		单位 UNITS	MM
					比例 SCALE	1:1

料号 PART NO.	ZX-HY2.0-DZ	版本 REV.	A
品名 TITLE	2.0 Pitch	页次 SHEET	1/1
客户料号 CUTM.NO.			
兆星精密电子(深圳)有限公司 ShenZhen ZhaoXing Precision electronics Co., Ltd.			