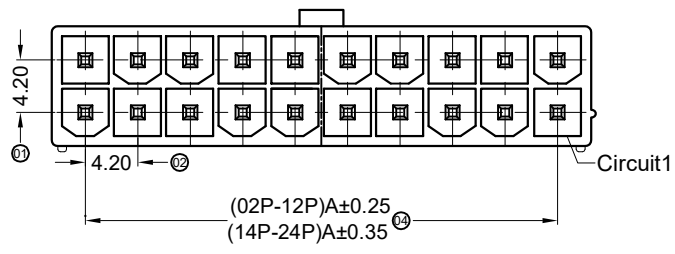
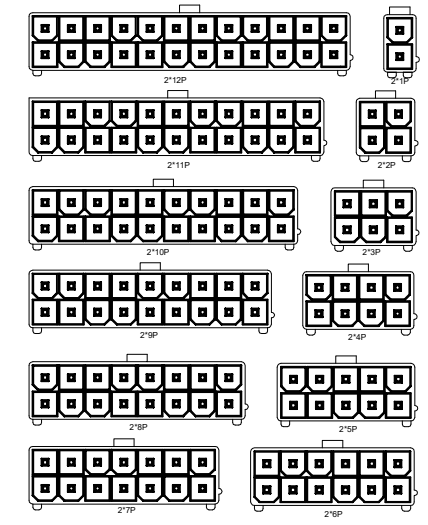
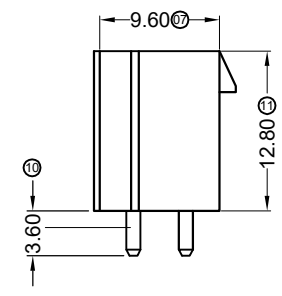
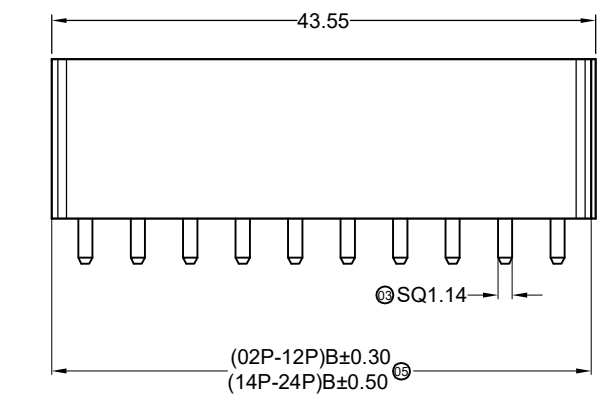


修 订 REV NO	标 记 MARK	修 改 描 要 REVISION DESCRIPTION	签 名 SIGNATURE	日 期 DATE
		NEW DWG		2016-03-12



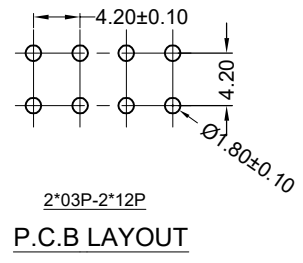
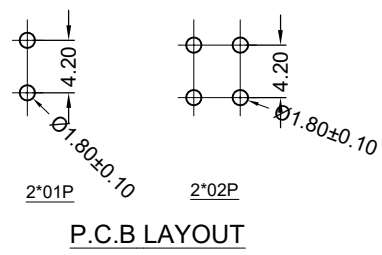
Specifications :

- Voltage rating: 600V AC / DC
- Current rating: 9A AC / DC
- Withstanding voltage: 1500V AC/minute
- Temperature range: -25°C~+85°C
- Insulation resistance: ≥100MΩ
- Contact resistance: ≤10mΩ
- After environmental testing: ≤20mΩ



Contact	Dimensions	
	A	B
01	---	5.40
02	4.20	9.60
03	8.40	13.80
04	12.60	18.00
05	16.80	22.20
06	21.00	26.40
07	25.20	30.60
08	29.40	34.80
09	33.60	39.00
10	37.80	43.20
11	42.00	47.40
12	46.20	51.60
13	50.40	55.80
14	54.60	60.00

由 Autodesk 教育版产品制作



HDGC4201WR-F-2xXP	Nylon 66 UL 94V-2	Brass	Tin-Plated	4201H
PART NO	Material	Material(Pin)	Finish(Pin)	Mates With ZLT Housing

深圳市华德共创科技有限公司

Shenzhen Huade co-create Technology Co.,LTD

电话: 0755-27111216 传真: 0755-29940187

-TOLERANCES- UNLESS OTHERWISE SPECIFIED 公差参数表			TITLE: 产品名称: MX4.2直针			
X.X ±0.30	X.X* ±3°	APPD: 核准:	PART NO: 产品编号: 5557-2xXPWV(HDGC4201WV-2xXP)			
X.XX ±0.20	X.XX* ±2°	CHECK: 校对: 王建业	DATE	SCALE	UNIT	CODE NUMBER
X.XXX ±0.10	X.XXX* ±1°	DRAW: 绘图: 黄艳兰	2016-03-12	1:1	mm	A001

由 Autodesk 教育版产品制作