

|               |                              |
|---------------|------------------------------|
| 发行日期<br>Date: | 2026年03月30日<br>Mar. 30. 2026 |
| 承认NO          | GGSTE26205A                  |

# 产 品 规 格 书

## Product specification

产品名称： 铝电解电容器

Products Name: Aluminum Electrolytic capacitor

产品系列： CD263 系列

Products Series: CD263 Series

客户名称：

Customer:

南通江海电容器股份有限公司

Nantong Jianghai Capacitor Co.,Ltd

|                 |                |                 |
|-----------------|----------------|-----------------|
| 制 作<br>Designed | 审 核<br>Checked | 批 准<br>Approved |
| 徐晨骏             | 何霄云            | 徐志友             |

|                               |  |
|-------------------------------|--|
| 客户承认栏<br>User recognition bar |  |
|-------------------------------|--|

地址：江苏省南通市平潮镇通杨南路 79 号

ADD: NO.79, Tongyang South Road, Pingchao Town, Nantong City ,Jiangsu Province, P.R. China

TEL: 0086-0513-86726014

FAX: 0086-0513-86571812

P.C. 226361

E-MAIL: hxy@jianghai.com

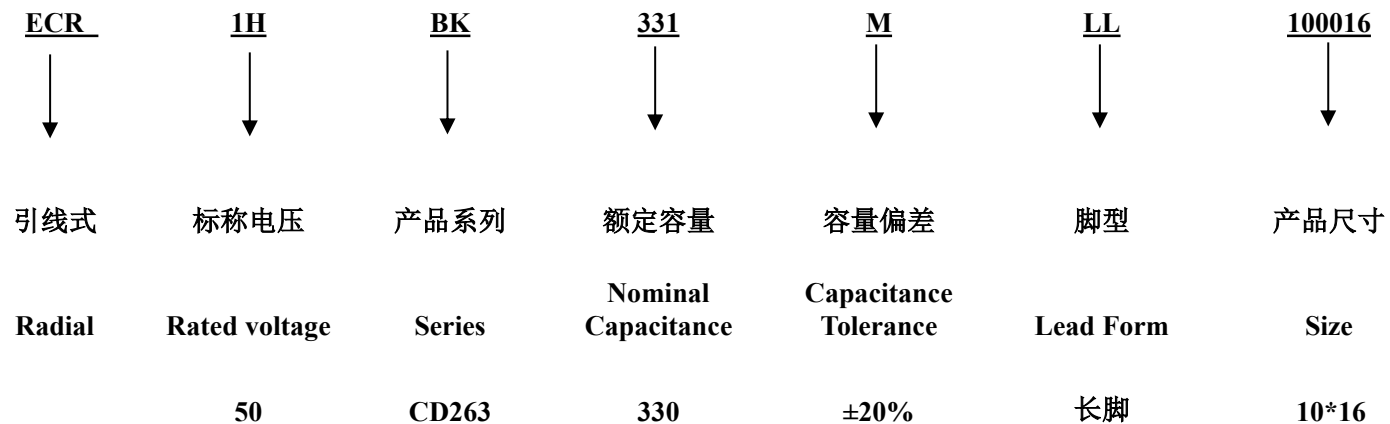


## CD263 规格表

### (Spec List For CD263 Series)

| 客户部品号<br>Customer<br>P/N | 江海部品号<br>Jianghai<br>P/N   | 额定电压<br>( $U_R$ )<br>Rated<br>voltage<br>(V) | 标称静电容量<br>( $C_R$ )<br>Nominal<br>Capacitance<br>( $\mu F$ ) | 静电容量允许<br>偏差 (%)<br>Capacitance<br>Tolerance | 损耗角正<br>切 $\tan\delta$<br>(%, 20°C,<br>120Hz) | 漏电流( $I_L$ )<br>Leakage<br>Current<br>( $\mu A, 20^\circ C, 2min$ ) | 额定纹波电流<br>( $I_R$ )<br>Maximum<br>permissible ripple current<br>(mA <sub>RMS</sub> , 105°C, 100KHZ<br>) | 负荷<br>寿命<br>Load<br>life<br>(Hrs) | 外形尺寸<br>D*L<br>(mm) | 备注        |
|--------------------------|----------------------------|--|--|--|---|---|---|-----------------------------------|---------------------|-----------|
| -                        | <b>ECR1HBK331MLL100016</b> | <b>50</b>                                    | <b>330</b>   | <b>±20</b>                                   | <b>10</b>                                     | <b>165</b>  | <b>505</b>  | <b>2000</b>                       | <b>10*16</b>        | <b>LL</b> |

1) 部品号说明 Explanation of part number:



1. 适用范围 Adapt Range

本产品规格书适用于南通江海电容器股份有限公司 CD263 型铝电解电容器产品。

This product specification is adapted to CD263 series Aluminum Electrolytic Capacitors produced by Nantong jianghai Capacitor Co.,Ltd

2. 使用温度范围 Operating Temperature Range:

6.3 ~ 250WV : -40~+105 °C    315 ~ 500WV : -25~+105 °C

3. 浪涌电压 Surge voltage

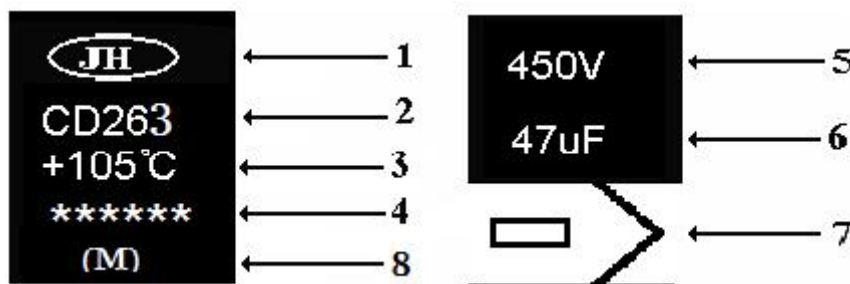
|                           |     |    |    |    |    |    |    |     |     |     |     |     |     |     |     |     |
|---------------------------|-----|----|----|----|----|----|----|-----|-----|-----|-----|-----|-----|-----|-----|-----|
| 工作电压 (V)<br>Rated voltage | 6.3 | 10 | 16 | 25 | 35 | 50 | 63 | 100 | 160 | 200 | 250 | 315 | 350 | 400 | 450 | 500 |
| 浪涌电压 (V)<br>Surge voltage | 7.2 | 13 | 20 | 32 | 44 | 63 | 79 | 125 | 200 | 250 | 300 | 365 | 400 | 450 | 500 | 550 |

4. 损耗 Dissipation Factor (20°C, 120Hz)

|                           |     |    |    |    |    |    |    |     |     |     |     |     |     |     |     |     |
|---------------------------|-----|----|----|----|----|----|----|-----|-----|-----|-----|-----|-----|-----|-----|-----|
| 工作电压 (V)<br>Rated voltage | 6.3 | 10 | 16 | 25 | 35 | 50 | 63 | 100 | 160 | 200 | 250 | 315 | 350 | 400 | 450 | 500 |
| 损耗角正切值<br>Tan (%) MAX     | 22  | 19 | 16 | 14 | 12 | 10 | 9  | 8   | 15  | 15  | 15  | 20  | 20  | 20  | 20  | 20  |

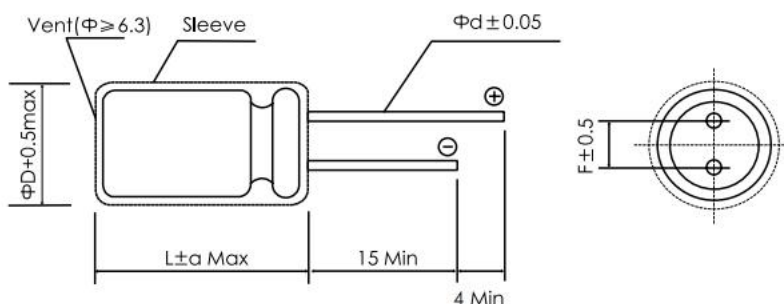
When nominal capacitance is over 1000 μF, Tan shall be added 0.02 to the listed valued with increase of every 1000 μF

5. 表示 Marking (Example: CD263 450V47)



| NO. | 项 目 Item              | NO. | 项 目 Item   |
|-----|-----------------------|-----|--|
| 1   | 商 标 Brand             | 5   | 额定电压 Rated voltage   |
| 2   | 产品系列 Products series  | 6   | 静电容量 Capacitance   |
| 3   | 上限温度 High temperature | 7   | 极 性 Polarity (对于 ΦD≤10mm 产品, 极性标志为  ) |
| 4   | 年度标记 Year code        | 8   | 容量偏差 Capacitance Tolerance (对于 ΦD≤8mm 产品, 容量偏差表示位置调整到上限温度后面)   |

6. 外形图 Dimensions



|    |     |     |     |      |      |      |      |     |     |     |      |
|----|-----|-----|-----|------|------|------|------|-----|-----|-----|------|
| ΦD | 5.0 | 6.3 | 8.0 | 10.0 | 12.5 | 16.0 | 18.0 | 20  | 20  | 22  | 25   |
| F  | 2.0 | 2.5 | 3.5 | 5.0  | 5.0  | 7.5  | 7.5  | 7.5 | 10  | 10  | 12.5 |
| Φd | 0.5 | 0.5 | 0.6 | 0.6  | 0.6  | 0.8  | 0.8  | 0.8 | 0.8 | 1.0 | 1.0  |
| α  | 1.5 | 1.5 | 1.5 | 2.0  | 2.0  | 2.0  | 2.0  | 2.0 | 2.0 | 2.5 | 3.0  |

7. 纹波电流系数 Multiplier for ripple current

7.1 频率系数 Frequency Coefficients

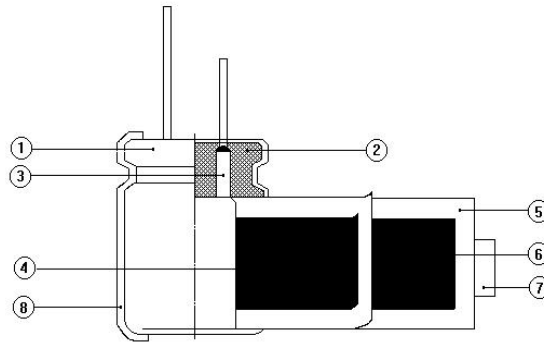
| Rated Voltage (v) | Freq (Hz)  |        |     |      |     |      |      |
|-------------------|------------|--------|-----|------|-----|------|------|
|                   | Cap (μF)   | 50, 60 | 120 | 1k   | 10k | 50k  | 100k |
| 6.3~100           | 0.1~8.2    | 0.32   | 0.4 | 0.7  | 0.8 | 0.92 | 1.0  |
|                   | 10~47      | 0.40   | 0.5 | 0.8  | 0.9 | 0.96 | 1.0  |
|                   | 100~220    | 0.56   | 0.7 | 0.9  | 0.9 | 0.96 | 1.0  |
|                   | 330~1000   | 0.64   | 0.8 | 0.9  | 1.0 | 1.0  | 1.0  |
|                   | 2200~15000 | 0.72   | 0.9 | 1.0  | 1.0 | 1.0  | 1.0  |
| 160~500           | 0.47~10    | 0.8    | 1.0 | 1.75 | 2.0 | 2.4  | 2.5  |
|                   | 22~56      | 0.8    | 1.0 | 1.6  | 1.8 | 1.9  | 2.0  |
|                   | 68~300     | 0.8    | 1.0 | 1.3  | 1.4 | 1.6  | 1.65 |

7.2 温度系数 Temperature Coefficients

| Rated Voltage (v) | Temperature (°C) |     |      |
|-------------------|------------------|-----|------|
|                   | +70              | +85 | +105 |
| 6.3~100           | 2.0              | 1.7 | 1.0  |
| 160~500           | 1.8              | 1.4 | 1.0  |

8. 构造图及材料表 (Frame drawing and Material list)

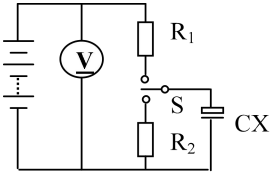
8.1 构造图 (Frame drawing)



8.2 材料表 (Material table)

| NO | 构成部件 parts     | 材质 Material                          | 供应商 Supply Factory                         | NO | 构成部件 parts       | 材质 Material          | 供应商 Supply Factory  |
|----|----------------|--------------------------------------|--|----|------------------|----------------------|---------------------|
| 1  | 铝壳 Case        | 铝 Aluminum                           | 临安奥星、通州新联、联亿电子                             | 6  | 负极箔 Cathode Foil | 铝 Aluminum           | K-JCC、众一电子、吴江飞乐     |
| 2  | 橡皮塞 Rubber     | 合成橡胶 Synthetic rubber                | 浙江天台祥和、苏州毅丰、玉环鑫庄、东莞联安、小里机材、点创              | 7  | 胶带 Tape          | 聚丙烯 Polypropylene    | 日东电工、湖州润科、杭州和联      |
| 3  | 引出线 Terminal   | 铝+CP线 Aluminum + CP wire             | 南通全用电子、南通南铭电子、欣宏、湖北光                       | 8  | 套管 Sleeve        | PET                  | 无等电子、苏州启联、顺鹏塑胶、南通博普 |
| 4  | 正极箔 Anode Foil | 铝 Aluminum                           | JCC、KDK、宏远、海一、南辉电子、海立、海源、海星电子、HEC、华锋、丰川、金泰 | 9  | 电解液 Electrolyte  | 有机溶剂 Organic Solvent | 江海电容器有限公司           |
| 5  | 隔离纸 Separator  | 电解电容器纸 Electrolytic Capacitors paper | NKK、日本大福造纸、德国 SPO、浙江凯恩、山东新凯电子、华先材料         |    |                  |                      |                     |

9. 性能特征:Specifications

| NO  | 项 目 Items  | 条 件 Conditions   | 规 格 Specifications   |
|-----|--|--|--|
| 9.1 | 最大允许纹波电流<br>Maximum permissible ripple current     | 温度 Temperature : $105 \pm 2^{\circ}\text{C}$<br>纹波:120Hz 正弦交流实际电流值+交流电压峰值 $\leq$ 标称电压<br>Ripple frequency:<br>The maximum sinusoidal alternating current of a frequency specified below at which the capacitor can be operated continuously, Where DC. Voltage +peak ripple voltage $\leq$ Rated voltage   | 见规格表<br>Refer to SPEC LIST   |
| 9.2 | 浪涌电压<br>Surge Voltage                              | 在下面规定的温度下,通过指定的浪涌电压,6.0分钟(充电30秒,放电5分30秒)为一周,往返1000回合,常温常湿下放置1~2小时达到热平衡状态测定满足<br>The capacitor shall be subjected to 1000 cycles at a temperature specified below, each consisting of a charge period of $30 \pm 5\text{s}$ , followed by a discharge period of approx 5min. 30 s. And the capacitor shall be stored 1~2 hours under standard atmospheric conditions to obtain thermal stability, after which measurement shall be made<br>应加电压: 见3项<br>Test voltage: see 3<br>温度: $15 \sim 30^{\circ}\text{C}$<br>Test Temperature : $15 \sim 30^{\circ}\text{C}$<br>测试回路 Measurement circuit<br><br>R1: 串联保护电阻 ( $1\text{K}\Omega$ )<br>Protective series resistor ( $1\text{K}\Omega$ )<br>V: 直流电压表 DC Voltage<br>R2: 放电电阻 Discharge resistor ( $1\text{K}\Omega$ )<br>S: 切换开关 Switch<br>Cx: 待测电容器 Test Capacitor | 漏电流: 不超过规定值<br>Leakage Current:<br>Not more than the specified value<br>容量变化: 初始值的 $\pm 15\%$ 以内<br>Capacitance change:<br>Within $\pm 15\%$ of the initial value<br>损耗角正切: 不超过规定值<br>Dissipation Factor :<br>Not more than the specified value $\kappa$ |
| 9.3 | 静电容量<br>(允许偏差)<br>Capacitance<br>( Tolerance )     | 测试频率: 120 Hz<br>Measuring frequency : 120 Hz<br>测试电压: 0.5 Vrms or less<br>Measuring voltage : 0.5Vrms or less<br>DC bias voltage : $+1.5 \sim 2.0 \text{ V DC}$  | 静电容量允许偏差<br>$\pm 20\%$<br>Capacitance Tolerance<br>$\pm 20\%$  |
| 9.4 | 损耗角正切( $\text{tg } \delta$ )<br>Dissipation Factor | 测试条件与静电容量相同<br>Measurement shall be made under the same conditions as those given for the measurement of capacitance   | 见规格表<br>Refer to SPEC LIST   |

9.5

漏电流

Leakage Current

电容器接  $1000 \pm 10 \Omega$  的保护电阻施加电压 1 或 2 分钟后的测试电流。

The rated voltage shall be applied across the capacitor and its protective resistor which shall be  $1000 \pm 10 \Omega$ . The leakage Current shall then be measured after an electrocution period of 1 or 2min. The leakage current shall be calculated by the following equation.

漏电流:  $(I) = E/R_s$

Leakage current:

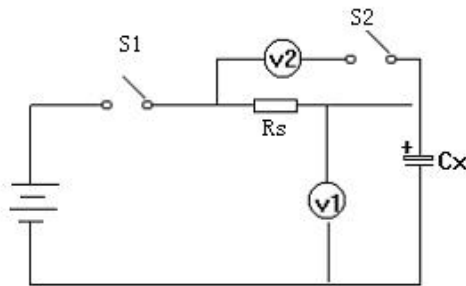
E: 直流电压表的电压值

Voltage measured with DC voltmeter

$R_s$ : 标准电阻的电阻值

Resistance of the protective resistor

测定电路 measurement circuit



电压将下法 voltage drop method)

$R_s$ : 标准电阻的电阻值 ( $1000 \pm 10 \Omega$ )

protective resistor

直流电压表或电子电压表

DC voltmeter or electronic voltmeter

S1: 开关 switch

S2: 电压表保护用变换开关

Protective switch for a voltmeter

CX: 待测电容器 test capacitor

6.3~100WV: 0.01CV  
或 3uA 以下

(2 分钟取大值)

Less than 0.01CV or 3uA  
whichever larger  
(2min)

160~500WV: (1min)

$CV \leq 1000$ :  $0.1CV + 40 \mu A$

$CV > 1000$ :  $0.04CV + 100 \mu A$

C: 标称静电容量 ( $\mu F$ )  
Capacitance

V: 额定电压 (V)

Rated voltage

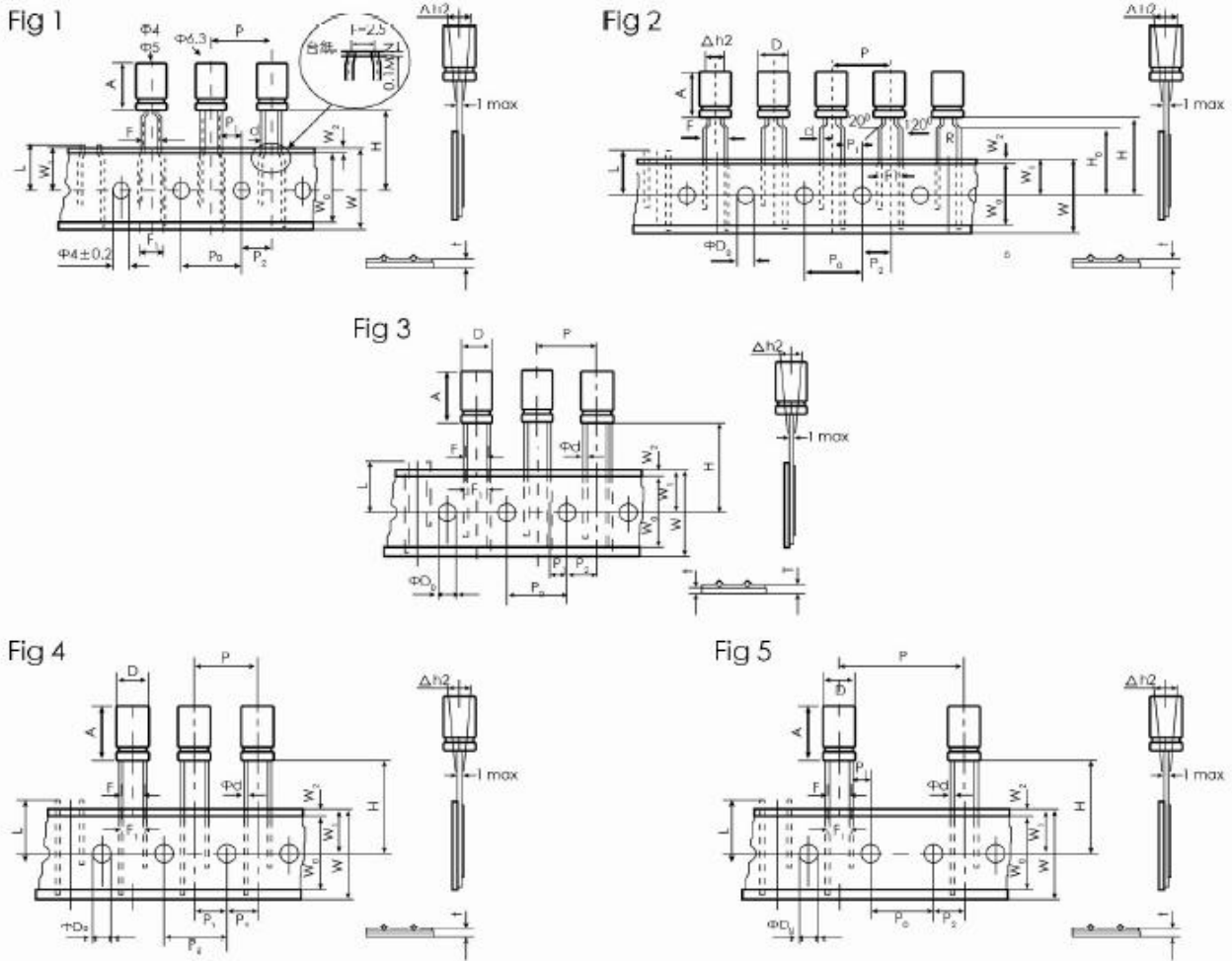
| NO.            | 项目 Items  | 条 件 Conditions  |         |                 |          |   |       |                              |   |                  |                  |   |       |                              |   |          |                  |   |       |                              |                |                                |                              |                |   |                                      |                        |  |
|----------------|---|---|---------|-----------------|----------|---|-------|------------------------------|---|------------------|------------------|---|-------|------------------------------|---|----------|------------------|---|-------|------------------------------|----------------|--------------------------------|------------------------------|----------------|---|--------------------------------------|------------------------|--|
| 9.6            | 高低温特性<br><br>Characteristic at High and low temperature | <p>电容器根据下表的次序处理<br/>The capacitor shall be subjected in turn to the procedures specified below.</p> <table border="1" data-bbox="555 474 1370 860"> <thead> <tr> <th>阶段 Step</th> <th>温 度 Temperature</th> <th>时 间 Time</th> </tr> </thead> <tbody> <tr> <td>1</td> <td>20±2℃</td> <td>热平衡状态<br/>Thermal equilibrium</td> </tr> <tr> <td>2</td> <td>-25 (-40) °C ±3℃</td> <td>*2 小时<br/>2 hours</td> </tr> <tr> <td>3</td> <td>20±2℃</td> <td>热平衡状态<br/>Thermal equilibrium</td> </tr> <tr> <td>4</td> <td>105℃ ±2℃</td> <td>*2 小时<br/>2 hours</td> </tr> <tr> <td>5</td> <td>20±2℃</td> <td>热平衡状态<br/>Thermal equilibrium</td> </tr> </tbody> </table> <p>* 电容器放置在每一温度下，待阻抗或电容量稳定后方可测试。<br/>* The capacitor should be stored at each temperature until measured impedance or capacitance are stabilized .</p> <table border="1" data-bbox="555 1014 1370 1314"> <tbody> <tr> <td>阶段 2<br/>Step 2</td> <td>阻抗比 (对阶段 1)<br/>Impedance ratio</td> <td>见 9.10 项<br/>refer to No 9.10</td> </tr> <tr> <td rowspan="2">阶段 4<br/>Step 4</td> <td>静电容量变化率<br/>(对阶段 1)<br/>Change in capacitance</td> <td>静电 0~+20%<br/>within 0~+20% of step 1</td> </tr> <tr> <td>漏电流<br/>Leakage Current</td> <td>规定值 5 倍以下<br/>Less than 500% of the specified value</td> </tr> </tbody> </table> <p>阶段 1: 测定容量, 损耗和阻抗值。<br/>Step 1: Capacitance, Dissipation Factor and impedance shall be measured.<br/>阶段 2: 放置 2 小时后, 达到热平衡状态再测。<br/>Step 2: After the capacitor being stored for 2 hours, Capacitance, Dissipation Factor and impedance shall be Measured. The measurement shall be made at thermal stability.<br/>阶段 4: 放置 2 小时后, 达到热平衡状态再测。<br/>Step 4: After the capacitor being stored for 2 hours, Capacitance, Dissipation Factor and impedance shall be Measured. The measurement shall be made at thermal stability.</p> | 阶段 Step | 温 度 Temperature | 时 间 Time | 1 | 20±2℃ | 热平衡状态<br>Thermal equilibrium | 2 | -25 (-40) °C ±3℃ | *2 小时<br>2 hours | 3 | 20±2℃ | 热平衡状态<br>Thermal equilibrium | 4 | 105℃ ±2℃ | *2 小时<br>2 hours | 5 | 20±2℃ | 热平衡状态<br>Thermal equilibrium | 阶段 2<br>Step 2 | 阻抗比 (对阶段 1)<br>Impedance ratio | 见 9.10 项<br>refer to No 9.10 | 阶段 4<br>Step 4 | 静电容量变化率<br>(对阶段 1)<br>Change in capacitance | 静电 0~+20%<br>within 0~+20% of step 1 | 漏电流<br>Leakage Current | 规定值 5 倍以下<br>Less than 500% of the specified value |
| 阶段 Step        | 温 度 Temperature   | 时 间 Time  |         |                 |          |   |       |                              |   |                  |                  |   |       |                              |   |          |                  |   |       |                              |                |                                |                              |                |   |                                      |                        |  |
| 1              | 20±2℃   | 热平衡状态<br>Thermal equilibrium  |         |                 |          |   |       |                              |   |                  |                  |   |       |                              |   |          |                  |   |       |                              |                |                                |                              |                |   |                                      |                        |  |
| 2              | -25 (-40) °C ±3℃  | *2 小时<br>2 hours  |         |                 |          |   |       |                              |   |                  |                  |   |       |                              |   |          |                  |   |       |                              |                |                                |                              |                |   |                                      |                        |  |
| 3              | 20±2℃   | 热平衡状态<br>Thermal equilibrium  |         |                 |          |   |       |                              |   |                  |                  |   |       |                              |   |          |                  |   |       |                              |                |                                |                              |                |   |                                      |                        |  |
| 4              | 105℃ ±2℃  | *2 小时<br>2 hours  |         |                 |          |   |       |                              |   |                  |                  |   |       |                              |   |          |                  |   |       |                              |                |                                |                              |                |   |                                      |                        |  |
| 5              | 20±2℃   | 热平衡状态<br>Thermal equilibrium  |         |                 |          |   |       |                              |   |                  |                  |   |       |                              |   |          |                  |   |       |                              |                |                                |                              |                |   |                                      |                        |  |
| 阶段 2<br>Step 2 | 阻抗比 (对阶段 1)<br>Impedance ratio                          | 见 9.10 项<br>refer to No 9.10  |         |                 |          |   |       |                              |   |                  |                  |   |       |                              |   |          |                  |   |       |                              |                |                                |                              |                |   |                                      |                        |  |
| 阶段 4<br>Step 4 | 静电容量变化率<br>(对阶段 1)<br>Change in capacitance             | 静电 0~+20%<br>within 0~+20% of step 1  |         |                 |          |   |       |                              |   |                  |                  |   |       |                              |   |          |                  |   |       |                              |                |                                |                              |                |   |                                      |                        |  |
|                | 漏电流<br>Leakage Current                                  | 规定值 5 倍以下<br>Less than 500% of the specified value  |         |                 |          |   |       |                              |   |                  |                  |   |       |                              |   |          |                  |   |       |                              |                |                                |                              |                |   |                                      |                        |  |

| No.                               | 项目 Items                | 条件 C o n d i t i o n s  | 规格 Specifications |                 |                  |                       |                             |                     |                               |                   |                                 |                    |                                   |                       |                   |   |   |
|-----------------------------------|-------------------------|---|-------------------|-----------------|------------------|-----------------------|-----------------------------|---------------------|-------------------------------|-------------------|---------------------------------|--------------------|-----------------------------------|-----------------------|-------------------|---|---|
| 9. 7                              | 压力释放<br>Pressure relief | <p>一. 交流试验 A.C. test<br/>施加电压值: Applied voltage<br/>交流电压不超过 0.7 倍的额定直流电压或 250V 交流电压, 两者取小值。<br/>A.C. voltage not exceeding 0.7 times the rated direct voltage or 250V AC whichever is the lower.<br/>频率 Frequency : 50 Hz 或 60 Hz<br/>串联电阻参照下表 Series resistor refer to the table below.</p> <table border="1" data-bbox="493 660 1002 956"> <thead> <tr> <th>Capacitance</th> <th>Series resistor</th> </tr> </thead> <tbody> <tr> <td><math>C \leq 1 \mu F</math></td> <td><math>1000 \pm 100 \Omega</math></td> </tr> <tr> <td><math>1 \mu F &lt; C \leq 10 \mu F</math></td> <td><math>100 \pm 10 \Omega</math></td> </tr> <tr> <td><math>10 \mu F &lt; C \leq 100 \mu F</math></td> <td><math>10 \pm 1 \Omega</math></td> </tr> <tr> <td><math>100 \mu F &lt; C \leq 1000 \mu F</math></td> <td><math>1 \pm 0.1 \Omega</math></td> </tr> <tr> <td><math>1000 \mu F &lt; C \leq 10000 \mu F</math></td> <td><math>0.1 \pm 0.01 \Omega</math></td> </tr> <tr> <td><math>10000 \mu F &lt; C</math></td> <td>*</td> </tr> </tbody> </table> <p>* 电阻相当于试验频率阻抗的 1/2<br/>Resistance is equivalent to a half of Impedance by test frequency.</p> <p>二. 直流试验 D.C. test<br/>施加同额定电压相等的反电压。<br/>Reversed polarity D.C. rated voltage shall be applied to the capacitor.</p> <p>注: 1、该规定适用于铝壳直径 6mm 以上的电容器。<br/>2、试验开始 30 Min 后, 防爆装置不动作时, 停止试验。</p> <p>Note:<br/>1. This requirement applies to capacitors with a diameter of 6mm or more.<br/>2. When the pressure relief device does not open even 30 minutes after commencement of this test, the test may be ended.</p> | Capacitance       | Series resistor | $C \leq 1 \mu F$ | $1000 \pm 100 \Omega$ | $1 \mu F < C \leq 10 \mu F$ | $100 \pm 10 \Omega$ | $10 \mu F < C \leq 100 \mu F$ | $10 \pm 1 \Omega$ | $100 \mu F < C \leq 1000 \mu F$ | $1 \pm 0.1 \Omega$ | $1000 \mu F < C \leq 10000 \mu F$ | $0.1 \pm 0.01 \Omega$ | $10000 \mu F < C$ | * | <p>防爆装置释放时, 无燃烧、无爆炸或铝壳和封口材料的分离。<br/>The pressure relief device shall open in such a way as to avoid any danger of fire or explosion of Capacitor elements .</p> |
| Capacitance                       | Series resistor         |   |                   |                 |                  |                       |                             |                     |                               |                   |                                 |                    |                                   |                       |                   |   |   |
| $C \leq 1 \mu F$                  | $1000 \pm 100 \Omega$   |   |                   |                 |                  |                       |                             |                     |                               |                   |                                 |                    |                                   |                       |                   |   |   |
| $1 \mu F < C \leq 10 \mu F$       | $100 \pm 10 \Omega$     |   |                   |                 |                  |                       |                             |                     |                               |                   |                                 |                    |                                   |                       |                   |   |   |
| $10 \mu F < C \leq 100 \mu F$     | $10 \pm 1 \Omega$       |   |                   |                 |                  |                       |                             |                     |                               |                   |                                 |                    |                                   |                       |                   |   |   |
| $100 \mu F < C \leq 1000 \mu F$   | $1 \pm 0.1 \Omega$      |   |                   |                 |                  |                       |                             |                     |                               |                   |                                 |                    |                                   |                       |                   |   |   |
| $1000 \mu F < C \leq 10000 \mu F$ | $0.1 \pm 0.01 \Omega$   |   |                   |                 |                  |                       |                             |                     |                               |                   |                                 |                    |                                   |                       |                   |   |   |
| $10000 \mu F < C$                 | *                       |   |                   |                 |                  |                       |                             |                     |                               |                   |                                 |                    |                                   |                       |                   |   |   |

| No.                    | 项目 Items                             | 条 件 Conditions   | 规 格 Specifications  |        |        |       |        |         |                        |             |        |    |        |  |             |   |   |   |   |                     |  |         |           |     |                        |             |   |   |   |              |   |    |    |  |
|------------------------|--------------------------------------|--|---|--------|--------|-------|--------|---------|------------------------|-------------|--------|----|--------|--|-------------|---|---|---|---|---------------------|--|---------|-----------|-----|------------------------|-------------|---|---|---|--------------|---|----|----|--|
| 9.8                    | 高温负荷<br>Load life                    | <p>在 105±2℃ 的恒温箱内，电容器施加最大允许纹波电流，施加直流电压和交流电压的峰值的和要等于额定电压，时间 2000 小时，试验结束后，在标准状态下放置 16 小时后进行测试。</p> <p>The capacitor shall be placed in a circulating air oven at an ambient temperature of 105±2℃. It must not be subjected to direct radiation from heating elements. DC voltage and the rated ripple current shown in table shall be applied for a period of 2000 hours. The sum of the DC voltage and peak AC voltage must not exceed the full rated voltage of the capacitor. It shall be subjected to standard atmospheric for 16 hours, after which measurement shall be made.</p>  | <p>漏电流：不超过规定值<br/>容量变化：初测值的±20 % 以内<br/>损耗角正切：不超过规定值的 2 倍<br/>Leakage current : ≤<br/>Initial specified value<br/>Capacitance change :<br/>Within ±20 % of initial value<br/>dissipation factor : ≤<br/>200% of initial specified value<br/>试验后底部允许轻微鼓起: <b>A little bulged is accepted. The criteria is as follows:</b></p> <table border="1"> <tr> <th>壳号 (Φ)</th> <th>判定基准</th> </tr> <tr> <td>&lt;12.5</td> <td>≤0.8mm</td> </tr> <tr> <td>12.5~16</td> <td>≤1.0mm</td> </tr> <tr> <td>18~22</td> <td>≤1.6mm</td> </tr> <tr> <td>25</td> <td>≤1.8mm</td> </tr> </table> | 壳号 (Φ) | 判定基准   | <12.5 | ≤0.8mm | 12.5~16 | ≤1.0mm                 | 18~22       | ≤1.6mm | 25 | ≤1.8mm |  |             |   |   |   |   |                     |  |         |           |     |                        |             |   |   |   |              |   |    |    |  |
| 壳号 (Φ)                 | 判定基准                                 |  |   |        |        |       |        |         |                        |             |        |    |        |  |             |   |   |   |   |                     |  |         |           |     |                        |             |   |   |   |              |   |    |    |  |
| <12.5                  | ≤0.8mm                               |  |   |        |        |       |        |         |                        |             |        |    |        |  |             |   |   |   |   |                     |  |         |           |     |                        |             |   |   |   |              |   |    |    |  |
| 12.5~16                | ≤1.0mm                               |  |   |        |        |       |        |         |                        |             |        |    |        |  |             |   |   |   |   |                     |  |         |           |     |                        |             |   |   |   |              |   |    |    |  |
| 18~22                  | ≤1.6mm                               |  |   |        |        |       |        |         |                        |             |        |    |        |  |             |   |   |   |   |                     |  |         |           |     |                        |             |   |   |   |              |   |    |    |  |
| 25                     | ≤1.8mm                               |  |   |        |        |       |        |         |                        |             |        |    |        |  |             |   |   |   |   |                     |  |         |           |     |                        |             |   |   |   |              |   |    |    |  |
| 9.9                    | 高温存储<br>Shelf life                   | <p>温度 Temp : 105±2℃<br/>时间 Time : 1000+36 小时<br/>电压处理：在常温下电容器串联保护电阻 (1KΩ)，加额定电压 30 分钟, 放电, 常温放置 24~ 48 小时后测量。<br/>Condition : The DC rated voltage shall be applied across the capacitor and its protective resistor (1KΩ) for 30 minutes, The capacitor shall then be stored under standard atmospheric conditions for 24 ~ 48 hours.<br/>若判定有疑义，则按 JIS C5141 5.2 进行电压处理<br/>if any doubt arises on the judgment, the capacitors shall be subjected to voltage treatment specified in JIS C5141 5.2.</p>  | <p>漏电流：不超过规定值<br/>容量变化：初测值的±20 % 以内<br/>损耗角正切：不超过规定值的 2 倍<br/>Leakage current : Initial specified value<br/>Capacitance change :<br/>Within ±20 % of<br/>initial value<br/>dissipation factor : ≤<br/>200% of initial specified value</p>   |        |        |       |        |         |                        |             |        |    |        |  |             |   |   |   |   |                     |  |         |           |     |                        |             |   |   |   |              |   |    |    |  |
| 9.10                   | 阻抗特性<br>Impedance stability          | <table border="1"> <tr> <td colspan="2">Rated voltage ( V )</td> <td>6.3</td> <td>10</td> <td>16</td> <td>25~100</td> </tr> <tr> <td rowspan="2">Impedance radio(120Hz)</td> <td>Z -25℃/+20℃</td> <td>4</td> <td>3</td> <td colspan="2">2</td> </tr> <tr> <td>Z -40℃/+20℃</td> <td>8</td> <td>6</td> <td>4</td> <td>3</td> </tr> </table><br><table border="1"> <tr> <td colspan="2">Rated voltage ( V )</td> <td>160~250</td> <td>315 ~ 450</td> <td>500</td> </tr> <tr> <td rowspan="2">Impedance Radio(120Hz)</td> <td>Z -25℃/+20℃</td> <td>3</td> <td>3</td> <td>6</td> </tr> <tr> <td>Z - 40℃/+20℃</td> <td>8</td> <td>--</td> <td>--</td> </tr> </table> | Rated voltage ( V )   |        | 6.3    | 10    | 16     | 25~100  | Impedance radio(120Hz) | Z -25℃/+20℃ | 4      | 3  | 2      |  | Z -40℃/+20℃ | 8 | 6 | 4 | 3 | Rated voltage ( V ) |  | 160~250 | 315 ~ 450 | 500 | Impedance Radio(120Hz) | Z -25℃/+20℃ | 3 | 3 | 6 | Z - 40℃/+20℃ | 8 | -- | -- |  |
| Rated voltage ( V )    |                                      | 6.3  | 10  | 16     | 25~100 |       |        |         |                        |             |        |    |        |  |             |   |   |   |   |                     |  |         |           |     |                        |             |   |   |   |              |   |    |    |  |
| Impedance radio(120Hz) | Z -25℃/+20℃                          | 4  | 3   | 2      |        |       |        |         |                        |             |        |    |        |  |             |   |   |   |   |                     |  |         |           |     |                        |             |   |   |   |              |   |    |    |  |
|                        | Z -40℃/+20℃                          | 8  | 6   | 4      | 3      |       |        |         |                        |             |        |    |        |  |             |   |   |   |   |                     |  |         |           |     |                        |             |   |   |   |              |   |    |    |  |
| Rated voltage ( V )    |                                      | 160~250  | 315 ~ 450   | 500    |        |       |        |         |                        |             |        |    |        |  |             |   |   |   |   |                     |  |         |           |     |                        |             |   |   |   |              |   |    |    |  |
| Impedance Radio(120Hz) | Z -25℃/+20℃                          | 3  | 3   | 6      |        |       |        |         |                        |             |        |    |        |  |             |   |   |   |   |                     |  |         |           |     |                        |             |   |   |   |              |   |    |    |  |
|                        | Z - 40℃/+20℃                         | 8  | --  | --     |        |       |        |         |                        |             |        |    |        |  |             |   |   |   |   |                     |  |         |           |     |                        |             |   |   |   |              |   |    |    |  |
| 9.11                   | 可焊性<br>Solder ability                | <p>浸渍时间 Solder press time: 2±0.5s<br/>焊接温度 Solder temperature: 245±5℃</p>  | <p>浸渍面积 95%以上附着<br/>At least 95% of<br/>Circumferential surface of the dipped portion of termination shall be covered with new solder</p>   |        |        |       |        |         |                        |             |        |    |        |  |             |   |   |   |   |                     |  |         |           |     |                        |             |   |   |   |              |   |    |    |  |
| 9.12                   | 耐焊接热<br>Resistance to soldering heat | <p>温度 260±5℃<br/>Test Temperature: 260±5℃<br/>时间:10±1 s<br/>Test time: 10±1s</p>   | <p>漏电流:不超过规定值<br/>Leakage Current :Not more than the specified value<br/>电容量变化:初测值的±10%以内<br/>Capacitance change :within±10% of the initial value<br/>损耗角正切;不超过规定值<br/>Dissipation Factor :Not more than the specified value<br/>外观无明显异常 Appearance :No remarkable abnormality</p>  |        |        |       |        |         |                        |             |        |    |        |  |             |   |   |   |   |                     |  |         |           |     |                        |             |   |   |   |              |   |    |    |  |

| No.  | 项目 Items                          |                                       | 条 件 Conditions  |                                   |                           | 规 格 Specifications   |
|------|-----------------------------------|---------------------------------------|---|-----------------------------------|---------------------------|--|
| 9.13 | 耐湿性<br>Resistance of<br>dump heat |                                       | 温度: 40±2℃<br>Test Temperature : 40±2℃<br>湿度: 90-95% RH<br>Relative Humidity: 90-95%RH<br>时间: 240±8hrs<br>Time: 240±8hrs<br>试验后常温放置 24-48 小时<br>To expose in the atmospheric condition<br>for 24to 48 hours after completion of<br>test                                    |                                   |                           | 漏电流: 不超过规定值的 5 倍<br>Leakage Current :Not more than<br>the 500% specified value<br>电容量变化: 初测值的±10%以内<br>Capacitance<br>Change :within ± 10% of the<br>initial value<br>损耗角正切; 不超过规定值<br>DISSIPATION Factor :Not more<br>than the specified value<br>外观 Appearance :无明显异常 No<br>remarkable abnormality   |
| 9.14 | 耐振性<br>Resistance to<br>vibration |                                       | 频率: 10-55-10 Hz/分<br>Frequency :From 10 to 55 Hz and return<br>to 10 Hz, shall be transferred in 1 Min<br>Total Amplitude: 1.5 mm<br>条件: X. Y. Z 方向各 2 小时<br>Direction and duration of vibration: 3<br>orthogonal directions mutually each for<br>2 hours Total 6 hours . |                                   |                           | 静电容量测试时无接触不良, 断线<br>及短路, 端子无机械损伤<br>Capacitance: During the test,<br>measured value to be stabilized<br>(when measured several times<br>within 30min before completion<br>of test )Appearance :No<br>remarkable abnormality<br>静电容量变化: 初始值的±5%以内<br>外观无明显异常<br>Capacitance change:<br>Within ± 5% of the initial<br>value<br>No remarkable abnormality |
| 9.15 | 耐溶剂性<br>Resisting Solvent         |                                       | 方法一:<br>溶剂 Solvent: 异丙醇 Isopropyl alcohol<br>温度 Temperature: 20-25℃<br>时间 Time: 30±5s<br>或方法二:<br>溶 剂 Solvent : 软化水或蒸馏水<br>Demineralized or distilled Water<br>温度 Temperature: 50-60℃<br>时间 Time: 300±30s   |                                   |                           | 外观: 无显著异常<br>Appearance :No remarkable<br>abnormality  |
| 9.16 | 端子强度<br>Terminal<br>Strength      | 拉伸度<br>Tensile<br>test<br>intensity   | 线径<br>Diameter of<br>terminal<br>(mm)   | 拉伸力<br>Tensile<br>Strength<br>(N) | 维持时间<br>continued<br>time | 测定静电容量时, 无接触不良, 开<br>路和短路现象, 另外无机械损伤和<br>端子损伤。<br>When the capacitance is<br>measured ,there shall be no<br>intermittent contacts or open<br>- or short - circuiting .<br>There shall be no such<br>mechanical damage as terminal<br>damage etc.   |
|      |                                   |                                       | 0.3<d≤0.5   | 5                                 | 10±1 sec                  |  |
|      |                                   |                                       | 0.5<d≤0.8   | 10                                |                           |  |
|      |                                   | 0.8<d≤1.25                            | 20  |                                   |                           |  |
|      |                                   | 弯曲强度<br>winding<br>intensity          | 2 回合 2 bends  |                                   |                           |  |
|      |                                   | 线径<br>Diameter of<br>terminal<br>(mm) | 弯曲力<br>Tensile<br>Strength<br>(N)   | 锥质量<br>Awl quality                |                           |  |
|      |                                   | 0.3<d≤0.5                             | 2.5   | 0.25 kg                           |                           |  |
|      |                                   | 0.5<d≤0.8                             | 5   | 0.51 kg                           |                           |  |
|      |                                   | 0.8<d≤1.25                            | 10  | 1.0 kg                            |                           |  |

10. 编带 Lead Taping



| Item    | ΦD                | A                 | Φd        | P        | P0       | P1          | P2       | F            | F1       | W        | W0   | W1       | W2   | H             | H0       | L    | ΦD0      | Δh2 | t        | Fig. | Taping Code |
|---------|-------------------|-------------------|-----------|----------|----------|-------------|----------|--------------|----------|----------|------|----------|------|---------------|----------|------|----------|-----|----------|------|-------------|
| tol.    | +0.5<br>max       |                   | ±<br>0.05 | ±<br>1.0 | ±<br>0.2 | ±<br>0.5    | ±<br>1.0 | +0.8<br>-0.2 | ±<br>1.0 | ±<br>0.5 | min  | ±<br>0.5 | max  | +0.75<br>-0.5 | ±<br>0.5 | max  | ±<br>0.5 | max | ±<br>0.2 |      |             |
| Nominal | 4                 | 7<br>(+1.0)       | 0.45      | 12.7     | 12.7     | 5.1<br>3.85 | 6.35     | 2.5          | 3.5      | 18.0     | 10.0 | 9.0      | 1.5  | 18.5          | -        | 11.0 | 4.0      | 1.0 | 0.7      | 1    | FA          |
|         |                   |                   |           |          |          |             |          | 5            | 5        |          |      |          |      | 17.5          | 16.0     |      |          |     |          | 2    | FB          |
|         | 5                 | 7<br>(+1.0)       | 0.45      | 12.7     | 12.7     | 5.1<br>3.85 | 6.35     | 2.5          | 3.5      | 18.0     | 10.0 | 9.0      | 1.5  | 18.5          | -        | 11.0 | 4.0      | 1.0 | 0.7      | 1    | FA          |
|         |                   |                   |           |          |          |             |          | 5            | 5        |          |      |          |      | 17.5          | 16.0     |      |          |     |          | 2    | FB          |
|         |                   | 11.5<br>(+1.5)    | 0.5       | 12.7     | 12.7     | 5.1<br>3.85 | 6.35     | 2.5          | 3.5      | 18.0     | 10.0 | 9.0      | 1.5  | 18.5          | -        | 11.0 | 4.0      | 1.0 | 0.7      | 1    | FA          |
|         |                   |                   |           |          |          |             |          | 5            | 5        |          |      |          |      | 16.0          | 16.0     |      |          |     |          | 2    | FB          |
|         | 6.3               | 7<br>(+1.5)       | 0.5       | 12.7     | 12.7     | 5.1<br>3.85 | 6.35     | 2.5          | 3.5      | 18.0     | 10.0 | 9.0      | 1.5  | 18.5          | -        | 11.0 | 4.0      | 1.0 | 0.7      | 1    | FA          |
|         |                   |                   |           |          |          |             |          | 5            | 5        |          |      |          |      | 16.0          | 16.0     |      |          |     |          | 2    | FB          |
|         | 8                 | 11.5~16<br>(+1.5) | 0.6       | 12.7     | 12.7     | 4.6         | 6.35     | 3.5          | 3.5      | 18.0     | 10.0 | 9.0      | 1.5  | 18.5          | -        | 11.0 | 4.0      | 1.0 | 0.7      | 3    | FA          |
|         |                   |                   |           |          |          | 3.85        |          | 5            | 5        |          |      |          |      | 20.0          | 16.0     |      |          |     |          | 2    | FB          |
|         | 10                | 12.5~20<br>(+2.0) | 0.6       | 12.7     | 12.7     | 3.85        | 6.35     | 5            | 5        | 18.0     | 10.0 | 9.0      | 1.5  | 18.5          | -        | 11.0 | 4.0      | 1.0 | 0.7      | 4    | FA          |
|         | 12.5              | 20~25<br>(+2.0)   | 0.6       | 15       | 15       | 5.0         | 7.5      | 5            | 5        | 18.0     | 12.0 | 9.0      | 1.5  | 18.5          | -        | 11.0 | 4.0      | 1.0 | 0.7      | 4    | FA          |
| 25.4    |                   |                   |           | 12.7     | 3.85     | 6.35        | 5        |              |          |          |      |          |      |               |          |      |          |     |          | 5    | 18.5        |
| 16      | 20~25.5<br>(+2.0) | 0.8               | 30        | 15       | 3.75     | 7.5         | 7.5      | 7.5          | 18.0     | 12.0     | 9.0  | 1.5      | 18.5 | -             | 11.0     | 4.0  | 1.0      | 0.7 | 5        | FD   |             |

11. 成型 Lead Forming (unit: mm)  
Lead Cutting and Forming Code

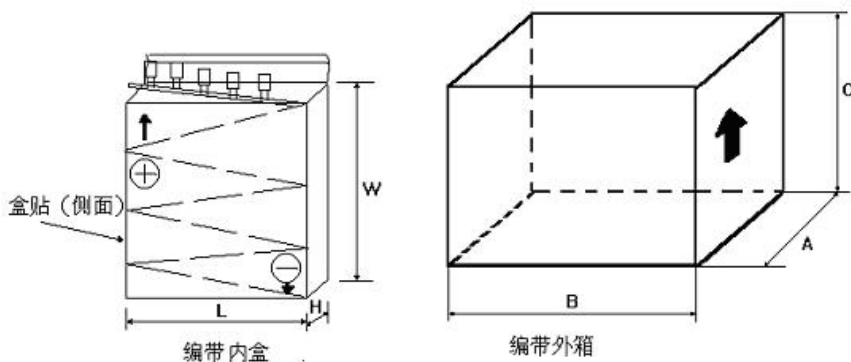
Unit: mm

|  |  |
|--|--|
| <p><b>FM(<math>\Phi 4\sim\Phi 8</math>)</b></p>  | <p><b>FC(<math>\Phi 4\sim\Phi 8</math>)</b></p>  |
| <p><b>MC(<math>\Phi 10\sim\Phi 20</math>)</b></p>  | <p><b>CC(<math>\Phi 4\sim\Phi 20</math>)</b></p> <p><math>L=3.8\pm 0.3\text{mm}</math></p>   |
| <p><b>WS(<math>\Phi 10\sim\Phi 20</math>)</b></p> <p>L: <math>3.7\pm 0.3</math><br/>h: <math>3.0\pm 0.5</math><br/>P: Lead Pitch</p>   | <p><b>WX(<math>\Phi 10\sim\Phi 20</math>)</b></p> <p>L: <math>3.7\pm 0.3</math><br/>h: <math>3.0\pm 0.5</math><br/>P: Lead Pitch</p>   |
| <p><b>KS(<math>\Phi 18\sim\Phi 20</math>)</b></p> <p>A: <math>3.7\pm 0.5</math><br/>E: <math>2.7\pm 0.5</math></p> <p>C: <math>2.2\pm 0.5</math></p> <p>F: Lead Pitch<br/>H: <math>3.0\pm 0.5</math></p> <p>Negative Marking</p> | <p><b>KX(<math>\Phi 18\sim\Phi 20</math>)</b></p> <p>A: <math>3.7\pm 0.5</math><br/>E: <math>2.7\pm 0.5</math></p> <p>C: <math>2.2\pm 0.5</math></p> <p>F: Lead Pitch<br/>H: <math>3.0\pm 0.5</math></p> <p>Negative Marking</p> |
| <p><b>ES(<math>\Phi 10\sim\Phi 12.5</math>)</b></p> <p><math>h_1: 11\pm 0.5</math><br/><math>h_2: 6\pm 0.5</math></p> <p>L: <math>0.4\pm 0.3</math><br/>P: Lead Pitch</p>  | <p><b>EX(<math>\Phi 10\sim\Phi 12.5</math>)</b></p> <p><math>h_1: 11\pm 0.5</math><br/><math>h_2: 6\pm 0.5</math></p> <p>L: <math>0.4\pm 0.3</math><br/>P: Lead Pitch</p>  |

## 12. 编带包装 Taping packing

### 12.1 内外盒尺寸及数量 Size and Quantity of inbox and outbox

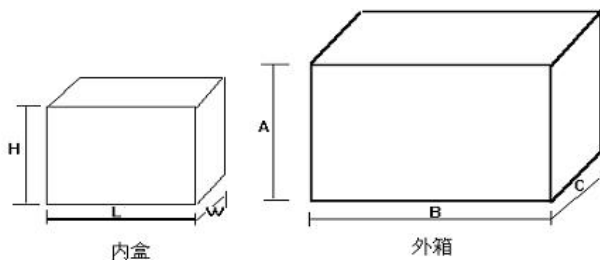
| $\phi D \times L$ | 内盒 inbox  |           |           |                | 外盒 outbox |           |           |                |
|-------------------|-----------|-----------|-----------|----------------|-----------|-----------|-----------|----------------|
|                   | $W \pm 5$ | $L \pm 5$ | $H \pm 3$ | Quantity (PCS) | $A \pm 5$ | $B \pm 5$ | $C \pm 3$ | Quantity (PCS) |
| 4×7               | 230       | 330       | 45        | 2500           | 345       | 500       | 250       | 25000          |
| 5×7               | 230       | 330       | 45        | 2000           | 345       | 500       | 250       | 20000          |
| 6.3×7             | 230       | 330       | 45        | 1500           | 345       | 500       | 250       | 15000          |
| 8×7               | 245       | 330       | 44        | 1000           | 350       | 520       | 270       | 10000          |
| 8×9               | 245       | 330       | 44        | 1000           | 350       | 520       | 270       | 10000          |
| 5×11.5            | 230       | 330       | 45        | 2000           | 345       | 500       | 250       | 20000          |
| 5×15              | 175       | 340       | 55        | 1500           | 360       | 615       | 200       | 15000          |
| 6.3×11.5          | 230       | 330       | 45        | 1500           | 345       | 500       | 250       | 15000          |
| 6.3×14            | 220       | 330       | 50        | 1500           | 350       | 480       | 270       | 15000          |
| 6.3×15            | 220       | 330       | 50        | 1500           | 350       | 480       | 270       | 15000          |
| 8×11.5            | 245       | 330       | 50        | 1000           | 345       | 540       | 270       | 10000          |
| 8×12              | 245       | 330       | 50        | 1000           | 345       | 540       | 270       | 10000          |
| 8×14              | 245       | 330       | 50        | 1000           | 345       | 540       | 270       | 10000          |
| 8×15              | 190       | 340       | 58        | 800            | 356       | 408       | 260       | 6400           |
| 8×16              | 190       | 340       | 58        | 800            | 356       | 408       | 260       | 6400           |
| 8×20              | 190       | 340       | 58        | 800            | 356       | 408       | 260       | 6400           |
| 10×12.5           | 190       | 340       | 50        | 500            | 356       | 408       | 225       | 4000           |
| 10×16             | 190       | 340       | 50        | 500            | 356       | 408       | 225       | 4000           |
| 10×20             | 190       | 340       | 58        | 500            | 356       | 408       | 260       | 4000           |
| 10×25             | 190       | 340       | 58        | 500            | 356       | 408       | 260       | 4000           |
| 10×30             | 190       | 340       | 68        | 500            | 356       | 408       | 295       | 4000           |
| 12.5×20           | 220       | 325       | 62        | 400            | 235       | 340       | 335       | 2000           |
| 12.5×25           | 220       | 325       | 62        | 400            | 235       | 340       | 335       | 2000           |
| 12.5×30           | 225       | 345       | 63        | 500            | 240       | 358       | 270       | 2000           |
| 16×20             | 225       | 345       | 63        | 250            | 240       | 358       | 270       | 1000           |
| 16×25             | 225       | 345       | 63        | 250            | 240       | 358       | 270       | 1000           |
| 16×30             | 218       | 345       | 68        | 250            | 230       | 358       | 295       | 1000           |
| 16×31.5           | 218       | 345       | 68        | 250            | 230       | 358       | 295       | 1000           |
| 18×35.5           | 275       | 345       | 73        | 250            | 290       | 358       | 330       | 1000           |
| 18×36             | 275       | 345       | 73        | 250            | 290       | 358       | 330       | 1000           |
| 18×40             | 275       | 345       | 78        | 250            | 290       | 358       | 330       | 1000           |



12.2 引线式长脚及成型产品散式包装 long Lead and molding products Packing

12.2.1 内外盒尺寸及数量 Size and Quantity of inbox and outbox

| ΦD×L       | 内盒 inbox |     |     |   | 外盒 outbox |     |     |  |
|------------|----------|-----|-----|---|-----------|-----|-----|--|
|            | L±5      | W±5 | H±3 | Quantity (PCS)                                | A±5       | B±5 | C±3 | Quantity (PCS)                                 |
| 4×7        | 280      | 210 | 145 | Long lead:5000<br>Lead Cut and forming :10000 | 310       | 445 | 295 | Long lead:20000<br>Lead Cut and forming :40000 |
| 5×7        | 280      | 210 | 145 |   | 310       | 445 | 295 |  |
| 6.3×7      | 280      | 210 | 145 |   | 310       | 445 | 295 |  |
| 5×11.5     | 280      | 210 | 145 |   | 310       | 445 | 295 |  |
| 5×15       | 280      | 210 | 145 |   |           |     |     |  |
| 8×7        | 280      | 210 | 145 | 5000  | 310       | 445 | 295 | 20000  |
| 8×9        | 280      | 210 | 145 |   | 310       | 445 | 295 |  |
| 6.3×11.5   | 280      | 210 | 145 |   | 310       | 445 | 295 |  |
| 6.3×15     | 280      | 210 | 145 |   | 310       | 445 | 295 |  |
| 7.3×17     | 280      | 210 | 145 | 3000  | 310       | 445 | 295 | 12000  |
| 7.3×18     | 280      | 210 | 145 |   | 310       | 445 | 295 |  |
| 8×11.5     | 280      | 210 | 145 | 2500  | 310       | 445 | 295 | 10000  |
| 8×12       | 280      | 210 | 145 |   | 310       | 445 | 295 |  |
| 8×14       | 280      | 210 | 145 |   | 310       | 445 | 295 |  |
| 8×16       | 280      | 210 | 145 |   | 310       | 445 | 295 |  |
| 8×20       | 280      | 210 | 145 |   | 310       | 445 | 295 |  |
| 10×12.5    | 280      | 210 | 145 |   | 310       | 445 | 295 |  |
| 10×16      | 280      | 210 | 145 | 2000  | 310       | 445 | 295 | 8000   |
| 10×20      | 280      | 210 | 145 | 1000  | 310       | 445 | 295 | 4000   |
| 10×30      | 280      | 210 | 145 |   | 310       | 445 | 295 |  |
| 12.5×20    | 280      | 210 | 145 |   | 310       | 445 | 295 |  |
| 12.5×25    | 280      | 210 | 145 |   | 310       | 445 | 295 |  |
| 12.5×30    | 280      | 210 | 145 | 500   | 310       | 445 | 295 | 2000   |
| 12.5×35    | 280      | 210 | 145 |   | 310       | 445 | 295 |  |
| 16×20      | 280      | 210 | 145 |   | 310       | 445 | 295 |  |
| 16×25      | 280      | 210 | 145 |   | 310       | 445 | 295 |  |
| 16×30      | 280      | 210 | 145 |   | 310       | 445 | 295 |  |
| 18×18      | 280      | 210 | 145 |   | 310       | 445 | 295 |  |
| 18×20      | 280      | 210 | 145 |   | 310       | 445 | 295 |  |
| 18×25      | 280      | 210 | 145 |   | 310       | 445 | 295 |  |
| 16×31.5    | 280      | 210 | 145 | 500   | 310       | 445 | 295 | 2000   |
| 16×35      | 280      | 210 | 145 | Long lead:400<br>Lead Cut and forming :500    | 310       | 445 | 295 | Long lead:1600<br>Lead Cut and forming :2000   |
| 16×40      | 280      | 210 | 145 |   | 310       | 445 | 295 |  |
| 18×31.5    | 280      | 210 | 145 | 250   | 310       | 445 | 295 | 1000   |
| 18×35.5/36 | 280      | 210 | 145 |   | 310       | 445 | 295 |  |
| 18×40      | 280      | 210 | 145 |   | 310       | 445 | 295 |  |
| 18×45      | 280      | 210 | 145 |   | 310       | 445 | 295 |  |
| 20×41      | 280      | 210 | 145 | 250   | 310       | 445 | 295 | 1000   |
| 22×40      | 280      | 210 | 145 | 150   | 310       | 445 | 295 | 600  |
| 22×35      | 280      | 210 | 145 |   | 310       | 445 | 295 |  |
| 25×40      | 280      | 210 | 145 |   | 310       | 445 | 295 |  |



12.3 引线式出口长脚产品排放式包装 long Lead export product packing  
 12.3.1 内外盒尺寸及数量 Size and Quantity of inbox and outbox

| ΦD×L     | 内盒 inbox |     |     |                | 外盒 outbox |     |     |                |
|----------|----------|-----|-----|----------------|-----------|-----|-----|----------------|
|          | L±5      | W±5 | H±3 | Quantity (PCS) | B±5       | C±5 | A±3 | Quantity (PCS) |
| 10×51    | 145      | 115 | 93  | 100            | 300       | 250 | 210 | 800            |
| 12.5×20  | 166      | 135 | 60  | 100            | 290       | 350 | 210 | 1200           |
| 12.5×25  | 166      | 135 | 60  | 100            | 290       | 350 | 210 | 1200           |
| 12.5×51  | 166      | 135 | 93  | 100            | 290       | 350 | 210 | 800            |
| 16×25    | 185      | 175 | 70  | 100            | 362       | 195 | 300 | 800            |
| 16×30    | 185      | 175 | 70  | 100            | 362       | 195 | 300 | 800            |
| 16×31.5  | 185      | 175 | 70  | 100            | 362       | 195 | 300 | 800            |
| 16×35.5  | 185      | 175 | 80  | 100            | 362       | 195 | 350 | 800            |
| 16×40    | 185      | 175 | 80  | 100            | 362       | 195 | 350 | 800            |
| 18×31.5  | 225      | 195 | 70  | 100            | 415       | 240 | 240 | 600            |
| 18×36    | 225      | 195 | 70  | 100            | 415       | 240 | 240 | 600            |
| 18×40    | 225      | 195 | 80  | 100            | 415       | 240 | 260 | 600            |
| 18×45/46 | 225      | 195 | 90  | 100            | 410       | 245 | 290 | 600            |
| 18×50    | 225      | 195 | 90  | 100            | 410       | 245 | 290 | 600            |
| 20×41    | 245      | 212 | 80  | 100            | 450       | 255 | 175 | 400            |
| 20×46    | 245      | 212 | 90  | 100            | 450       | 260 | 200 | 400            |
| 22×35    | 265      | 236 | 85  | 100            | 490       | 280 | 190 | 400            |
| 22×41    | 265      | 236 | 85  | 100            | 490       | 280 | 190 | 400            |
| 22×45    | 265      | 236 | 90  | 100            | 490       | 285 | 200 | 400            |
| 22×51    | 265      | 236 | 90  | 100            | 490       | 285 | 200 | 400            |
| 25×40    | 295      | 270 | 85  | 100            | 285       | 315 | 360 | 400            |

