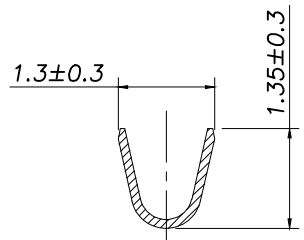
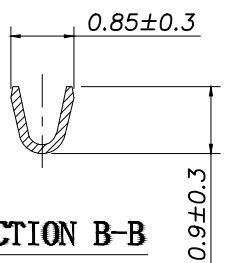


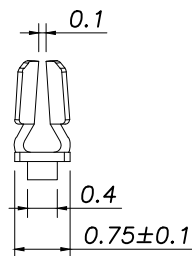
- SPECIFICATIONS**
- 1、Current Rating: 1A AC, DC
  - 2、Voltage Rating: 50V AC, DC
  - 3、Temperatuer Range: -40°C ~ +105°C
  - 4、Contact Resistance: 20mΩ Max
  - 5、Insulation Resistance: 100mΩ Min
  - 6、Withstanding Voltang: 500V AC/minute
  - 7、Material: Phosphoric brass Tin-plated
  - 8、Applicable Wire Sizes:AWG #28~32#
- Qty/Reel: 23000 PCS



**SECTION A-A**



**SECTION B-B**



**SECTION C-C**

|           |                        |                   |                   |       |                   |  |                  |               |              |     |
|-----------|------------------------|-------------------|-------------------|-------|-------------------|--|------------------|---------------|--------------|-----|
|           |                        |                   | GENERAL TOLERANCE |       | 制 图<br>DRAWING    |  | 深圳市富港科技有限公司      |               |              |     |
|           |                        |                   | DIM               | TOL   | 审 核<br>CHECK      |  |                  |               |              |     |
|           |                        |                   | X.X               | ±0.30 | 批 准<br>APPROVAL   |  | 产品名称<br>TITLE    | SHD (1.00) 端子 | 版本<br>REV.   | A   |
| 1         |                        |                   | 初版发行              |       | 比 例<br>SCALE      |  | 产品料号<br>PART NO. | FG-SHD-T      | 单 位<br>UNITS | mm  |
| 序号<br>No. | 变更内容<br>MODIFY CONTENT | 日期<br>MODIFY DATE | Angle ±3.0°       |       | 投 影<br>Projection |  | 材 料<br>MATERIAL  |               | 页 次<br>SHEET | 1/1 |