

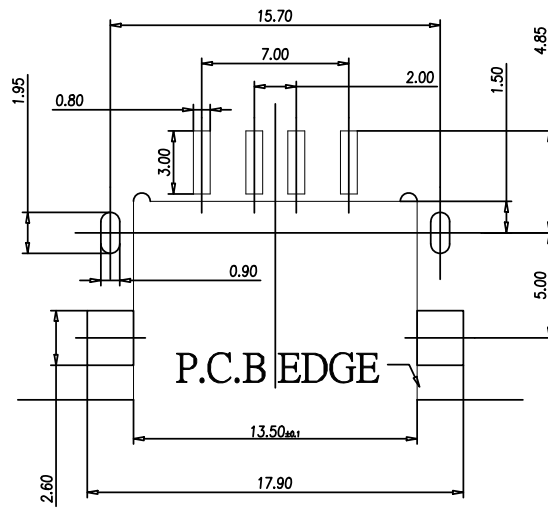
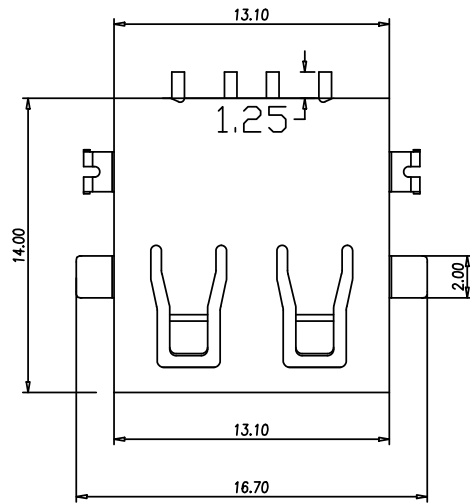
RoHS

MAPX

MODIFICATION

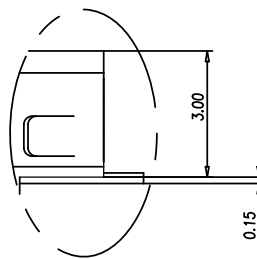
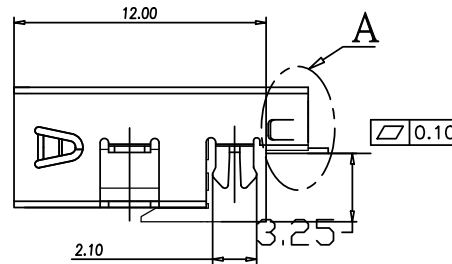
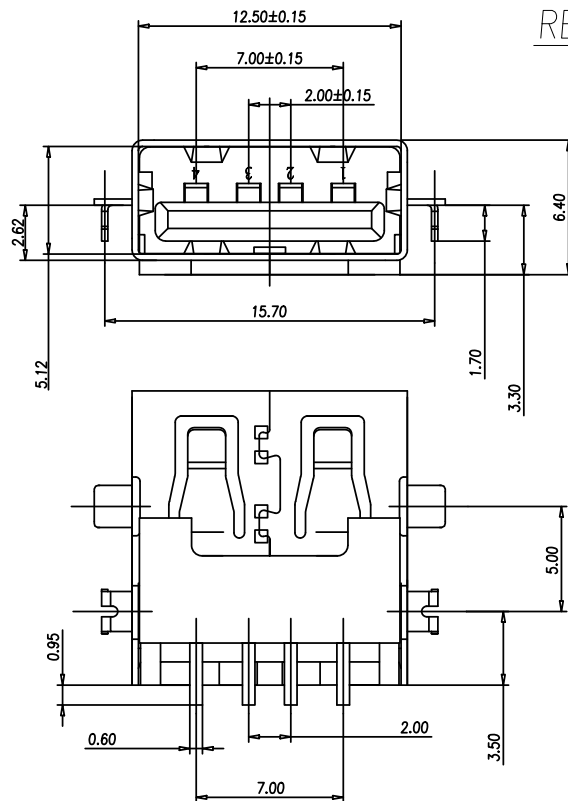
DRW

DATE



P.C.B EDGE

RECOMMENDED P.C.B. PATTERN LAYOUT



DET "A"
2:1

电气特性:Electrical:

1. 额定电流: Current Rating
1.5A/contact terminal
2. 额定电压: Voltage Rating
30V DC
3. 接触阻抗: Contact Resistance
30 milliohms MAX
4. 耐电压: Dielectric Withstanding Voltage:
500 V AC AT Sea Level
5. 绝缘阻抗: Insulation Resistance:
1000MEGA ohms MIN

物理性能: Mechanical:

1. 插拔力: Connector Mate and Unmate Force
Mate force: 3.57kgf (MAX)
Unmate force: 0.7kgf (MIN)
2. 端子保持力: Terminal Retention
1.0kgf (MIN)
3. 寿命: 1500次

原材料: Material:

1. 塑胶: Housing: lcp
2. 端子: Contact: Copper Alloy C2680
3. 外壳: Shell: SPCC/c2680

电镀: Finish:

1. 端子 Contact: Au G/F u" Plated on contact area
Tin50u" Plated on solder area
Nickel 50u" Plated underplating over all.
2. 外壳 Shell: Nickel 50u" Min plating over all.
3. Temperature Range: -55° C to +85° C

产品图
PRODUCT CHART DWG

深圳市精拓金电子有限公司
Shenzhen Jing Tuo Jin Electronics Co., Ltd.

公差一览表 TOLERANCE UNLESS OTHERWISE				单位 UNITS	MM	制图 DRAWING	L-S-S	产品料号 PRODUCT PART NO.	905-761B2022S10200		
X	±0.35	X	±5.°	比例 SCALE	1:1	审核 CHKD	G-Z-F	产品名称 PRODUCT NO.	AF/14.0刺破式四脚前贴片鱼叉 无边铁壳反向LCP黑色SMT		
.X	±0.30	.X	±2.°								
.XX	±0.25	.XX	±1.°								
.XXX	±0.05	.XXX	±0.5°								
日期 DATE	2021-03-10	核准 APPD	黄国荣	角法 VIEW	⊕	版本 VER	A0				