

### GT-TCB60X-HXXX-LX

**Operating Force**

A=160gf  
B=250gf  
C=100gf

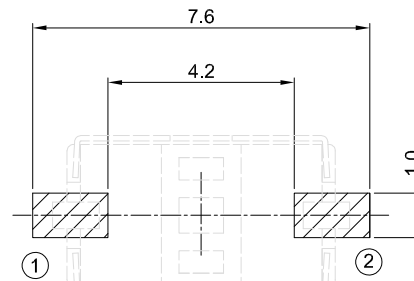
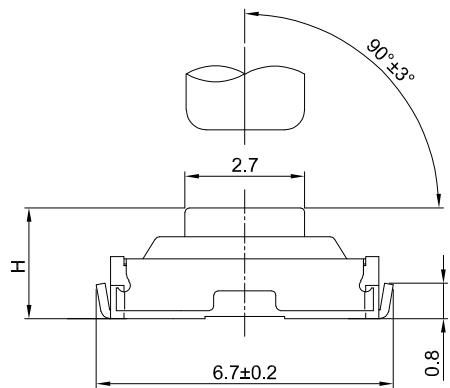
**Switch Height(mm)**

H025=2.50  
H027=2.70

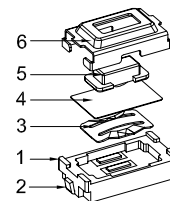
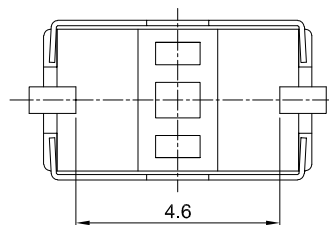
**Switch Lifetime (Force)**

L05=50,000 Cycles  
L1=100,000 Cycles

**Keying Tip Tilt**



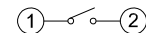
**RECOMMENDED PCB LAYOUT**  
TOLERANCE:±0.05



**G-Switch Specification:**

1. Operating temperature range: -40°C ~ +85°C
2. Rating: 50mA, 12V DC
3. Insulation resistance: 100MΩ min, 100V DC
4. Dielectric strength: 250V AC for 1 min
5. Contact resistance: 100m Ω max.
6. Travel: 0.25±0.1mm

6	COVER	STAINLESS STEEL	-
5	STEM	LCP	RED
4	TAPE	PI	YELLOW (TRANSPARENT)
3	CONTACT	STAINLESS STEEL	Ag PLATING
2	TERMINAL	COPPER ALLOY	Ag PLATING
1	BASE	HIGH TEMPERATURE PLASTIC	LCP BLACK
NO.	PART NAME	MATERIAL	REMARK



**CIRCUIT DIAGRAM**



SCALE: 1:1 UNIT: mm  
SIZE: A4

Unless otherwise General Tolerance:

X. ±0.40  
X.x ±0.30  
X.xx ±0.20  
X\* ±3°

Title: Vertical Tact Switch U Type 6.1×3.7×Hmm			
Molde Code: GT-TCB60X-HXXX-LX			
DRAWN	CHECKED	APPROVED	DATE
Jiang	Xia	Chen	2025.02.25



REV: A0 SHEET: 1/1