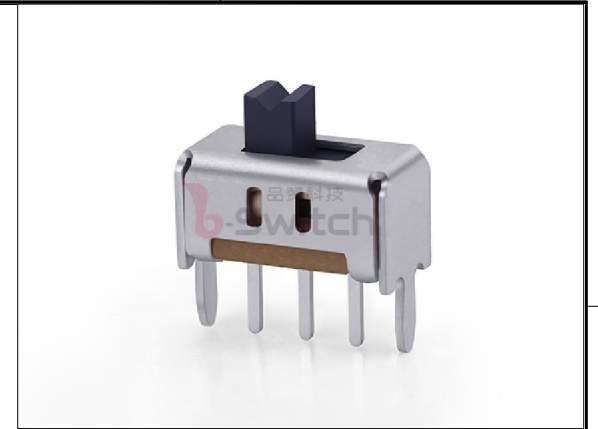


RECOMMENDED PCB LAYOUT
TOLERANCE:±0.05

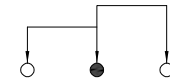
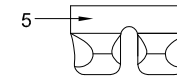
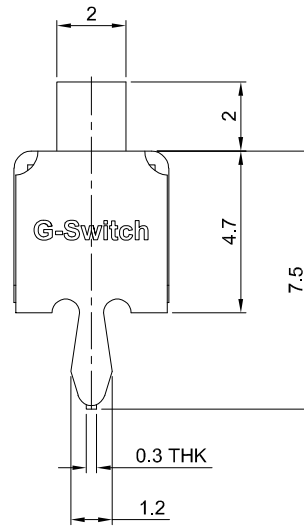
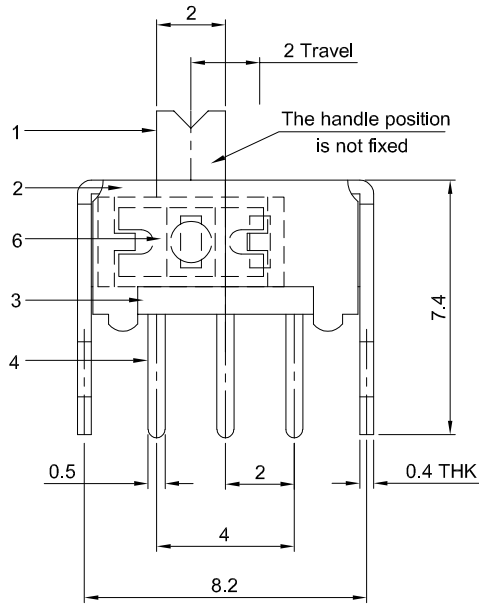


SS-12D02-VG2

SS: Straight shank

G-Switch P/N

VG: VG Grip Handle



CIRCUIT DIAGRAM

G-Switch Specification:

1. Operating temperature range: -40°C ~ +85°C
2. Rating: 0.3A, 50V DC
3. Insulation resistance: 100MΩ min, 100V DC
4. Dielectric strength: 500V AC for 1 min
5. Contact resistance: 50mΩ max.
6. Terminals arrangement: 1P2T
7. Travel: 2.0±0.1mm
8. Switch lifetime: 10,000Cycles

6	SPRING PLATE	PBS STRIP	NATURAL
5	CONTACT CLIP	PBS C5210R	Ag PLATED
4	TERMINAL	BRASS STRIP	Ag PLATED
3	BASE	PHENOLIC RESIN	NATURAL
2	FRAME	STEEL STRIP	Ni PLATED
1	KNOB	PA66	BLACK
NO.	PART NAME	MATERIAL	REMARK



SCALE: 1:1 UNIT: mm
SIZE: A4

Unless otherwise
General Tolerance:
X ±0.40
X.x ±0.30
X.xx ±0.20
X° ±5°
X.x° ±3°

Title: Vertical Slide Switch
DIP 8.6×4.5×H4.7mm

Molde Code: SS-12D02-VG2

DRAWN	CHECKED	APPROVED	DATE
Jiang	Xia	Chen	2023.06.30



REV: A0 SHEET: 1/1