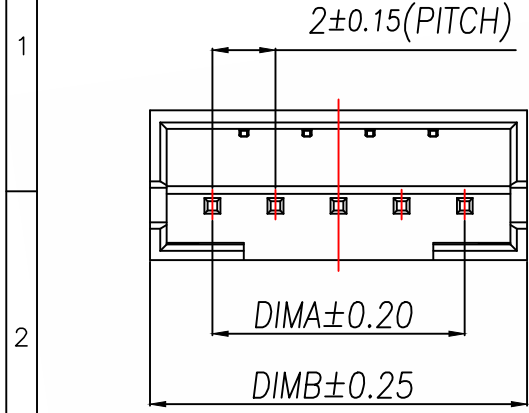
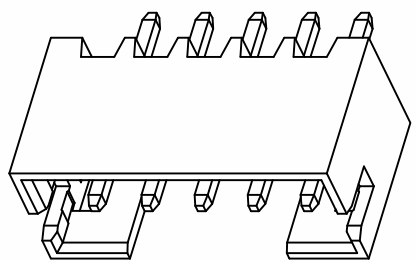


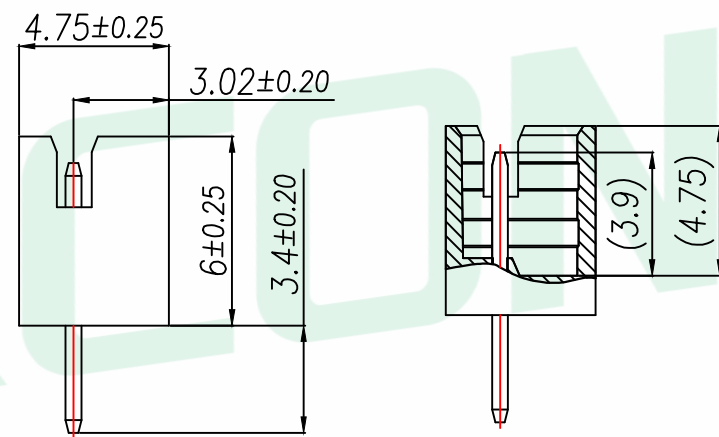
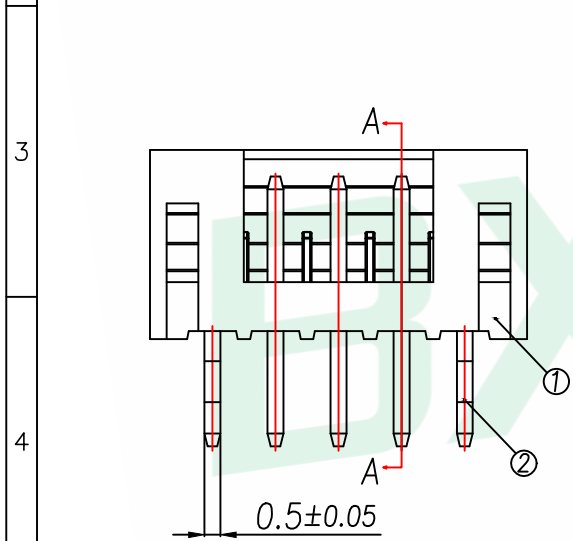
A		B		C		D		E	
REV.	DESCRIPTION				ECN NO.	NAME	DATE		



可打K脚, 50k起订



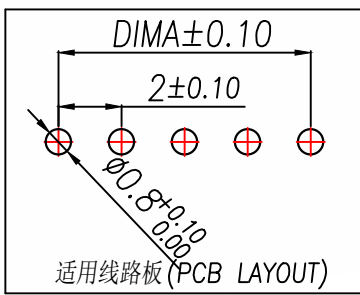
Part No	CKT	A	B
B2B-PH-K-S-2PZZ-MR	2	2.0	6.0
B2B-PH-K-S-3PZZ-MR	3	4.0	8.0
B2B-PH-K-S-4PZZ-MR	4	6.0	10.0
B2B-PH-K-S-5PZZ-MR	5	8.0	12.0
B2B-PH-K-S-6PZZ-MR	6	10.0	14.0
B2B-PH-K-S-7PZZ-MR	7	12.0	16.0
B2B-PH-K-S-8PZZ-MR	8	14.0	18.0
B2B-PH-K-S-9PZZ-MR	9	16.0	20.0
B2B-PH-K-S-10PZZ-MR	10	18.0	22.0
B2B-PH-K-S-11PZZ-MR	11	20.0	24.0
B2B-PH-K-S-12PZZ-MR	12	22.0	26.0
B2B-PH-K-S-13PZZ-MR	13	24.0	28.0
B2B-PH-K-S-14PZZ-MR	14	26.0	30.0
B2B-PH-K-S-15PZZ-MR	15	28.0	32.0
B2B-PH-K-S-16PZZ-MR	16	30.0	34.0
B2B-PH-K-S-17PZZ-MR	17	32.0	36.0
B2B-PH-K-S-18PZZ-MR	18	34.0	38.0
B2B-PH-K-S-19PZZ-MR	19	36.0	40.0
B2B-PH-K-S-20PZZ-MR	20	38.0	42.0



SECTION A-A

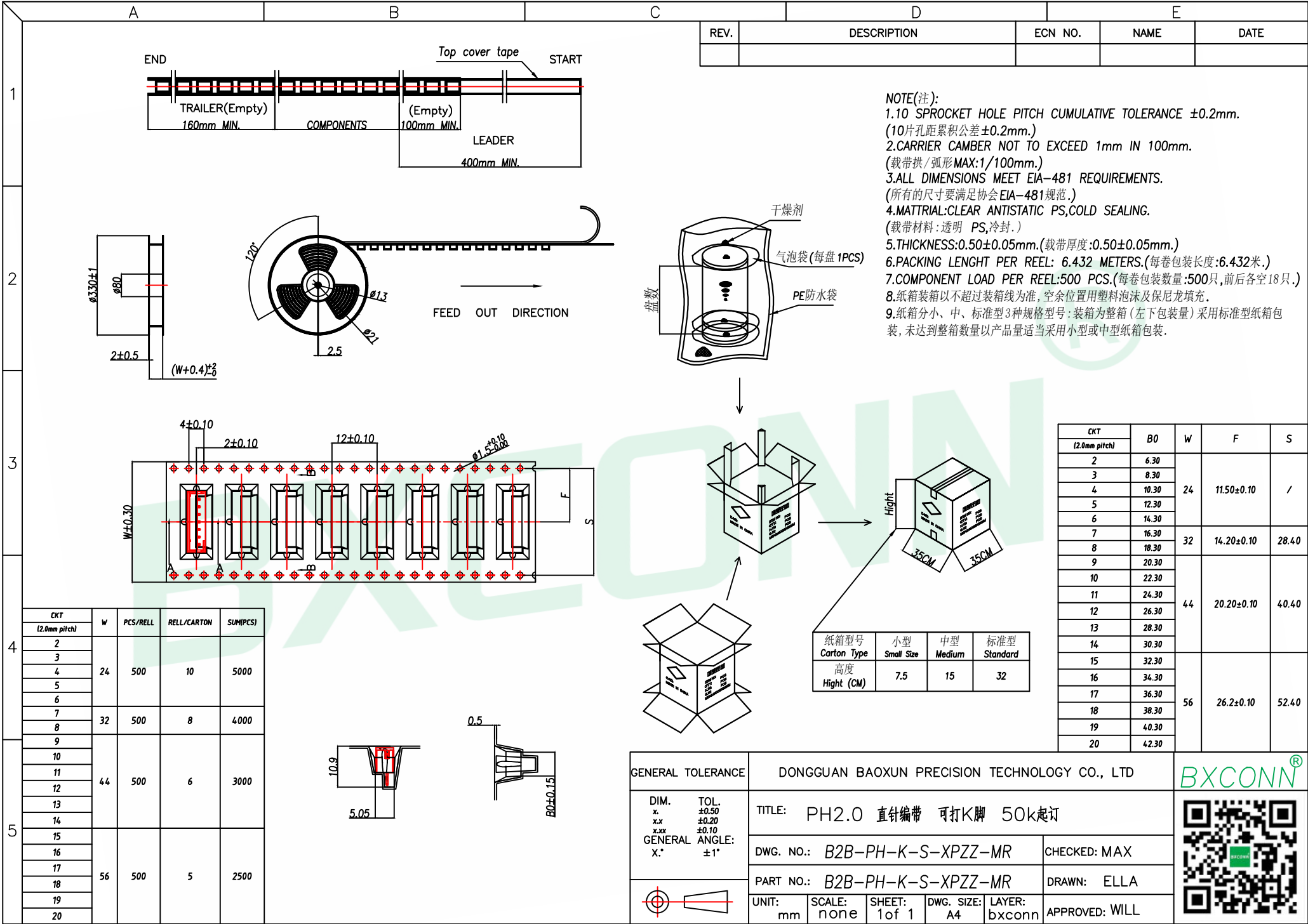
序号	品名	材质
1	PH2.0直针WTB胶芯	LCP UL94V-0 本色
2	PH2.0直针WTB端子	铜合金/表面镀锡

- 技术指标 (Technical Index):
1. 工作温度 (Temperature range): $-25^{\circ}\text{C} \sim 85^{\circ}\text{C}$.
 2. 额定电压 (Rated voltage): 200V DC/AC(rms).
 3. 额定电流 (Rated current): 2.0A AC, DC.
 4. 接触电阻 (Contact resistance): $\leq 25\text{m}\Omega$.
 5. 耐压值 (Withstanding voltage): 500V AC/minute.
 6. 绝缘电阻 (Insulation resistance): $\geq 1000\text{M}\Omega$.



GENERAL TOLERANCE		DONGGUAN BAOXUN PRECISION TECHNOLOGY CO., LTD			
DIM.	TOL.	TITLE: PH2.0 直针编带 可打K脚 50k起订			
x.	±0.50	DWG. NO.:	B2B-PH-K-S-XPZZ-MR		
x.x	±0.20	PART NO.:	B2B-PH-K-S-XPZZ-MR		
x.xx	±0.10	UNIT:	SCALE:	SHEET:	DWG. SIZE:
x.*	±1°	mm	none	1 of 1	A4
GENERAL ANGLE:		DRAWN:		APPROVED:	
±1°		ELLA		WILL	





REV.	DESCRIPTION	ECN NO.	NAME	DATE

- NOTE(注):
- 1.10 SPROCKET HOLE PITCH CUMULATIVE TOLERANCE $\pm 0.2\text{mm}$. (10片孔距累积公差 $\pm 0.2\text{mm}$.)
 - 2.CARRIER CAMBER NOT TO EXCEED 1mm IN 100mm. (载带拱/弧形MAX:1/100mm.)
 - 3.ALL DIMENSIONS MEET EIA-481 REQUIREMENTS. (所有的尺寸要满足协会EIA-481规范.)
 - 4.MATERIAL: CLEAR ANTISTATIC PS, COLD SEALING. (载带材料: 透明 PS, 冷封.)
 - 5.THICKNESS: $0.50 \pm 0.05\text{mm}$. (载带厚度: $0.50 \pm 0.05\text{mm}$.)
 - 6.PACKING LENGTH PER REEL: 6.432 METERS. (每卷包装长度: 6.432米.)
 - 7.COMPONENT LOAD PER REEL: 500 PCS. (每卷包装数量: 500只, 前后各空18只.)
 - 8.纸箱装箱以不超过装箱线为准, 空余位置用塑料泡沫及保尼龙填充.
 - 9.纸箱装小、中、标准型3种规格型号: 装箱为整箱(左下包装量)采用标准型纸箱包装, 未达到整箱数量以产品量适当采用小型或中型纸箱包装.

CKT (2.0mm pitch)	W	PCS/REEL	REEL/CARTON	SUM(PCS)
2	24	500	10	5000
3				
4				
5				
6				
7				
8	32	500	8	4000
9				
10				
11	44	500	6	3000
12				
13				
14				
15	56	500	5	2500
16				
17				
18				
19				
20				

CKT (2.0mm pitch)	B0	W	F	S
2	6.30	24	11.50±0.10	/
3	8.30			
4	10.30			
5	12.30			
6	14.30			
7	16.30			
8	18.30	32	14.20±0.10	28.40
9	20.30			
10	22.30			
11	24.30	44	20.20±0.10	40.40
12	26.30			
13	28.30			
14	30.30			
15	32.30	56	26.2±0.10	52.40
16	34.30			
17	36.30			
18	38.30			
19	40.30			
20	42.30			

纸箱型号 Carton Type	小型 Small Size	中型 Medium	标准型 Standard
高度 Height (CM)	7.5	15	32

GENERAL TOLERANCE	DONGGUAN BAOXUN PRECISION TECHNOLOGY CO., LTD			
DIM. x. x.x x.xx GENERAL ANGLE: X.*	TOL. ± 0.50 ± 0.20 ± 0.10 $\pm 1^{\circ}$	TITLE: PH2.0 直针编带 可打K脚 50k起订		
		DWG. NO.: B2B-PH-K-S-XPZZ-MR	CHECKED: MAX	
		PART NO.: B2B-PH-K-S-XPZZ-MR	DRAWN: ELLA	
		UNIT: mm	SCALE: none	SHEET: 1 of 1
		DWG. SIZE: A4	LAYER: bxconn	APPROVED: WILL

