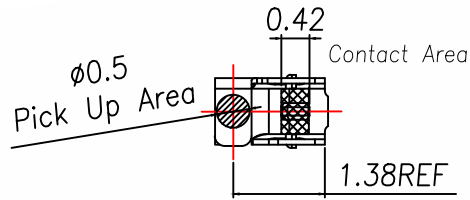
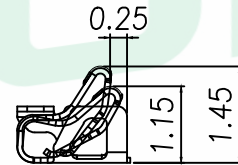
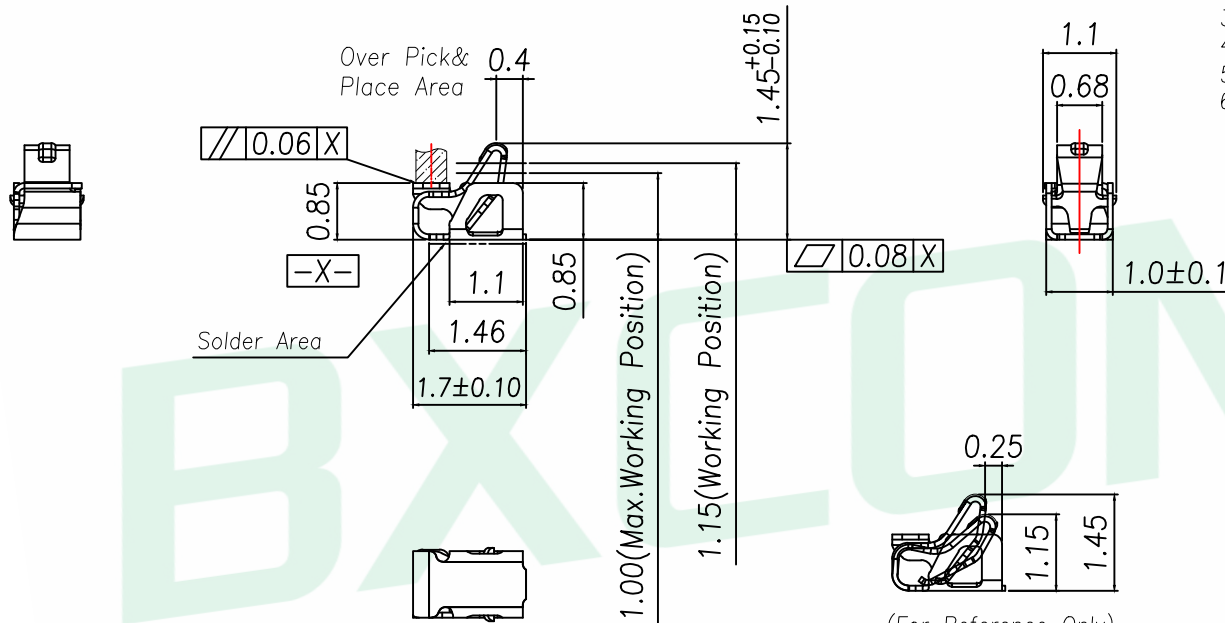


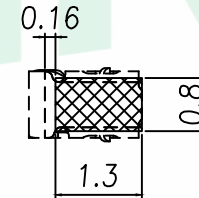
| REV. | DESCRIPTION | ECN NO. | NAME | DATE |
|------|-------------|---------|------|------|
| | | | | |



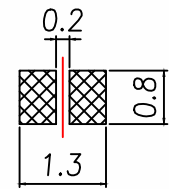
- NOTES:
- 1:MATERIAL
1-1: SUS-301 THICKNE=0.08MM
 - 2:SPECIFICATIONS
2-1: RATED CURRENT: 1.0A
2-2: VOLTAGE RATING: 1.5V
2-3: CONTACT RESISTANCE: 80mΩ/MAX
2-4: WELDING THRUST: >3KG
2-5: OPERATING TEMPERATURE: -40°C~+85°C
 - 3:DURABILITY: 1500 CYCLES
 - 4:SALT SPRAY TIME: 24H
 - 5:ELECTROPLATE: THE NICKEL-PLATED SUBSTRATE IS 50u" MIN
 - 6:REQUIREMENTS
6-1:TERMINAL TO EAT FULL TIN,NOTPEELING,
WELDING OBVIOUS COLOR AND OTHED ADVERSE
6-2:ROHS.REACH.HF HALOGER ADVERSE OF DOMESTIC
AND INTERNATIONAL ENVIRONMNTAL REQUIREMENTS



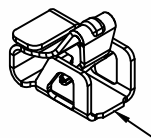
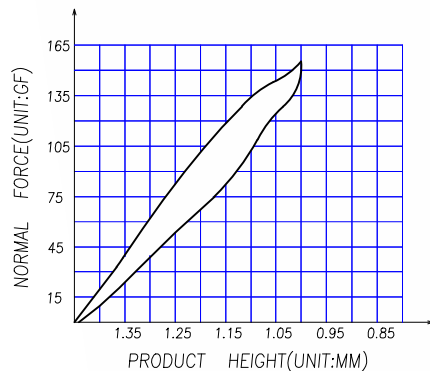
(For Reference Only)
Stated At Compression






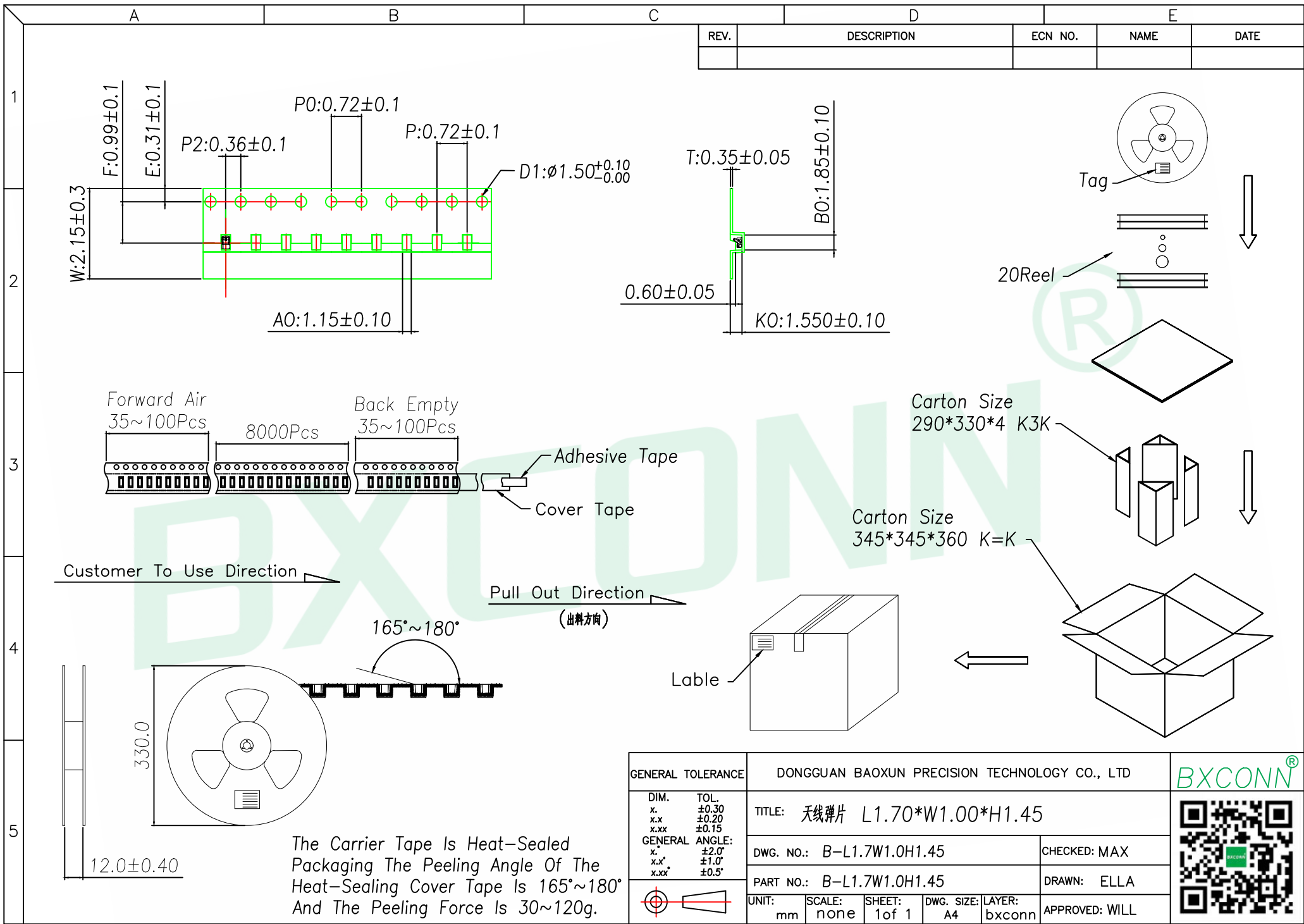
RECOMMENDED PCB LAYOUT
TOLERANCE:±0.05MM
(FOR REFERENCE ONLY)



METAL MASK T=0.08
TOLERANCE:±0.05MM
(FOR REFERENCE ONLY)



| | | | | | |
|--|---|---------------|---|---------------|---|
| GENERAL TOLERANCE | DONGGUAN BAOXUN PRECISION TECHNOLOGY CO., LTD | |  | | |
| DIM. TOL. x. ±0.30 x.x ±0.20 x.xx ±0.15 GENERAL ANGLE: x.° ±2.0° x.x° ±1.0° x.xx° ±0.5° | TITLE: 天线弹片 L1.70*W1.00*H1.45 | | | |  |
|  | DWG. NO.: B-L1.7W1.0H1.45 | CHECKED: MAX | | | |
| | PART NO.: B-L1.7W1.0H1.45 | DRAWN: ELLA | | | |
| UNIT: mm | SCALE: none | SHEET: 1 of 1 | DWG. SIZE: A4 | LAYER: bxconn | APPROVED: WILL |



| REV. | DESCRIPTION | ECN NO. | NAME | DATE |
|------|-------------|---------|------|------|
| | | | | |

1

2

3

4



5

Customer To Use Direction

Pull Out Direction

(出料方向)

The Carrier Tape Is Heat-Sealed Packaging The Peeling Angle Of The Heat-Sealing Cover Tape Is 165°~180° And The Peeling Force Is 30~120g.

| | | | | | |
|-------------------|-------|---|-----------------|---------------|--|
| GENERAL TOLERANCE | | DONGGUAN BAOXUN PRECISION TECHNOLOGY CO., LTD | | |   |
| DIM. | TOL. | TITLE: 天线弹片 L1.70*W1.00*H1.45 | | | |
| x. | ±0.30 | DWG. NO.: | B-L1.7W1.0H1.45 | CHECKED: MAX | |
| x.x | ±0.20 | PART NO.: | B-L1.7W1.0H1.45 | DRAWN: ELLA | |
| x.xx | ±0.15 | UNIT: | mm | SCALE: none | |
| GENERAL ANGLE: | | SHEET: | 1 of 1 | DWG. SIZE: A4 | LAYER: bxconn |
| x. | ±2.0° | APPROVED: WILL | | | |
| x.x | ±1.0° | | | | |
| x.xx | ±0.5° | | | | |