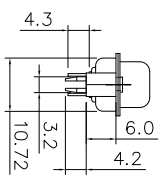
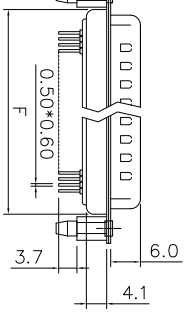
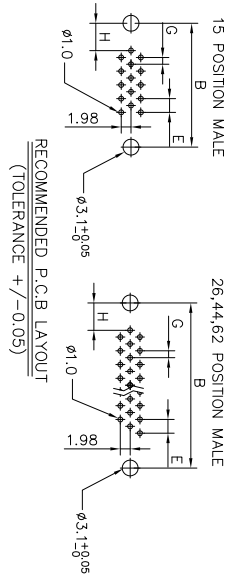
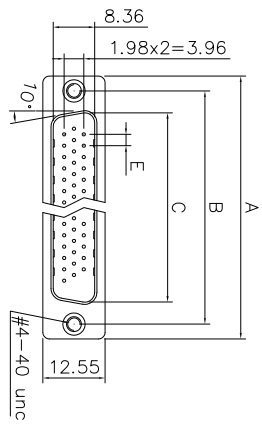


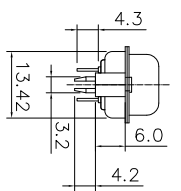
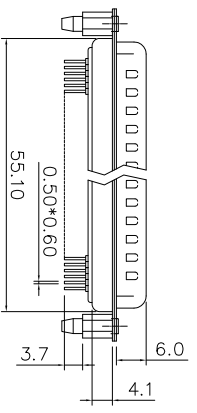
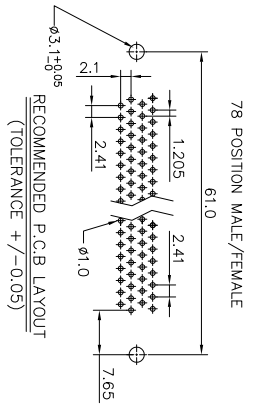
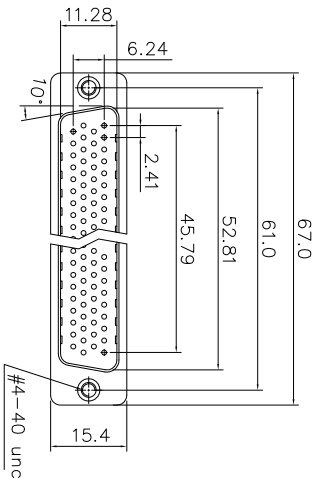
This document is the property of Amphenol Corporation and is delivered on a non-exclusive basis. It is to be used for manufacturing or sales of anyone other than Amphenol or its subsidiaries. It is to be used for information only and is not to be used for any other purpose or to use any information in this document.

Customer drawing



Dimensions

Shell size	Positions	A	B	C	E	F	G	H
E	15	30.81	24.99	16.92	2.29	19.20	1.145	7.04
A	26	39.20	33.30	25.25	2.29	27.70	1.145	6.88
B	44	53.05	47.04	38.96	2.29	41.10	1.145	6.88
C	62	69.40	63.50	55.42	2.41	57.30	1.205	7.00



REVISITONS

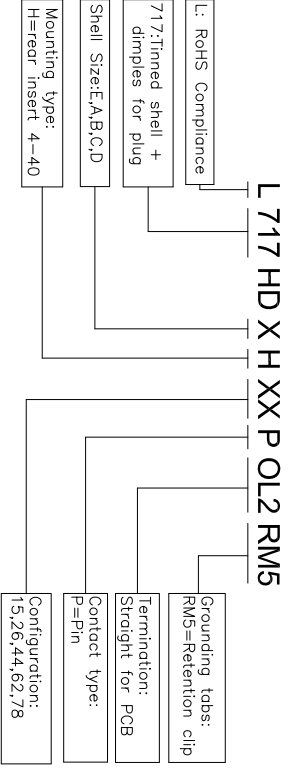
SWM	ECON	DESCRIPTION	DATE	APPROVED
1	HK--	First Release Drawing	12/27/13	JP
2	HK--	Update the shell height	02/14/20	JP
3	HK--	Add terminal OD, plating and 15pin H location	09/08/22	Tony,Tong
4	HK--	Update NOTE	08/21/23	Tony,Tong

D-SUB TECHNICAL DATA

SHELL : Steel, 100u" Tin Over 50u" min nickel over 50u" min Copper
BODY : Glass-Filled Thermoplastic PBT,UL94V-0
CONTACTS : Copper alloy
 Gold flash over 50u", nickel on mating area
 100u" tin over 50u" nickel on solder area

BOARDLOCK: Copper alloy, 100u" min Tin over 30u" min nickel Plated
ELECTRICAL : Voltage rating 250 VAC/Rms 60Hz
 Current Rating : 3 AMP
 Withstanding Voltage >500 VAC Rms
 Insulation resistance >1000 M Ohms
 Contact resistance 20 mOhms max
 Amphenol---(Series No.)
 Commercial reference
 Manufacturing date

PRODUCT CODE



UNLESS OTHERWISE SPECIFIED

TOLERANCES	DRAWN	APPROVAL	DATE	TITLE
U.S.	Bald, W.J.	08/21/23	High density, Dip straight type	
METRIC	Checked Tony,Tong	08/21/23		

SIZE: DRAWING NO. A4 L717HDXXXXPOL2RMS REV. 4
 SCALE: NONE SHEET 1 OF 1

ROHS COMPLIANT
 REACH SVHC Content less than 0.1%