

DFP PIN ASSIGNMENT

| PIN NO. | PIN NAME |
|---------|-------------|
| 1 | GND |
| 2 | HPD |
| 3 | ML_Lane_0_P |
| 4 | CONFIG1 |
| 5 | ML_Lane_0_N |
| 6 | CONFIG2 |
| 7 | GND |
| 8 | GND |
| 9 | ML_Lane_1_P |
| 10 | ML_Lane_3_P |
| 11 | ML_Lane_1_N |
| 12 | ML_Lane_3_N |
| 13 | GND |
| 14 | GND |
| 15 | ML_Lane_2_P |
| 16 | AUX_CH_P |
| 17 | ML_Lane_2_N |
| 18 | AUX_CH_N |
| 19 | GND |
| 20 | DP_PWR |

UFP PIN ASSIGNMENT

| PIN NO. | PIN NAME |
|---------|-------------|
| 1 | GND |
| 2 | HPD |
| 3 | ML_Lane_3_N |
| 4 | CONFIG1 |
| 5 | ML_Lane_3_P |
| 6 | CONFIG2 |
| 7 | GND |
| 8 | GND |
| 9 | ML_Lane_2_N |
| 10 | ML_Lane_0_N |
| 11 | ML_Lane_2_P |
| 12 | ML_Lane_0_P |
| 13 | GND |
| 14 | GND |
| 15 | ML_Lane_1_N |
| 16 | AUX_CH_P |
| 17 | ML_Lane_1_P |
| 18 | AUX_CH_N |
| 19 | GND |
| 20 | DP_PWR |

MATERIALS

- HOUSING : LCP, BLACK.
- TERMINAL : C18400, T=0.15mm
PLATING: GOLD FLASH PLATING ON CONTACT AREA, TIN PLATED ON SOLDER TAILS, NICKEL UNDER PLATED OVERALL.
- SHELL : STAINLESS STEEL (T=0.30mm)
PLATING: TIN PLATED ON SOLDER FOOT.
- MID PLATE: STAINLESS STEEL (T=0.20mm).
- COVER: LCP, BLACK.

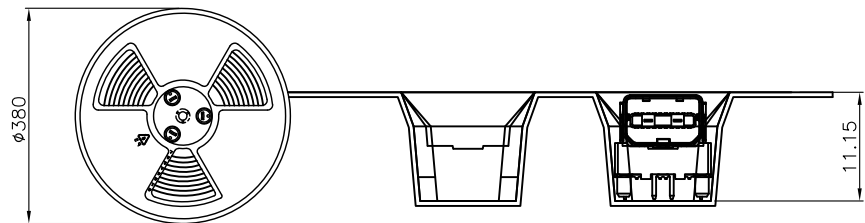
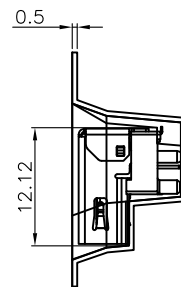
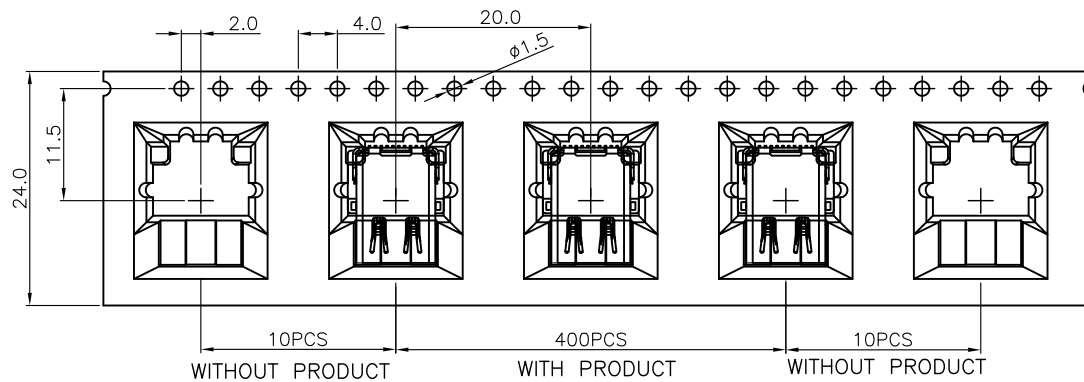
SPECIFICATION

- CURRENT RATING : 0.5A MAX
- CONTACT RESISTANCE : 30mΩ MAX.
- DIELECTRIC WITHSTANDING VOLTAGE : 500V AC R.M.S. FOR ONE MINUTE.
- INSULATION RESISTANCE : 100MΩ MIN AT 500V DC.
- OPERATING TEMPERATURE : -25°C TO +85°C.
- DURABILITY : 10000 CYCLES.
- MATING FORCE : 4.5Kgf MAX.
- UNMATING FORCE : 1.0Kgf~4.0Kgf.



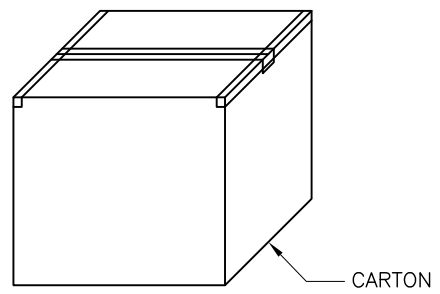
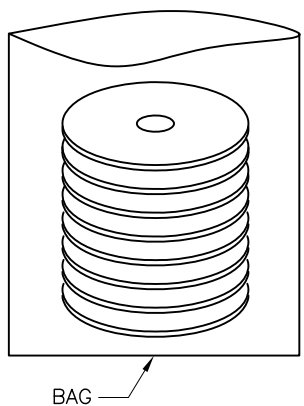
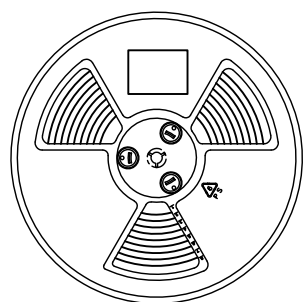
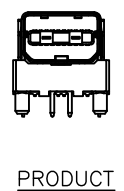
深圳市华宇创精密电子有限公司


| | | | |
|---|--------------------|----------------------|--|
| TOLERANCE: X.X ±0.30 X.XX ±0.25 X.XXX ±0.15 X: ±2° X.X° ±0.5° | DRAWN BY : 陈一鸣 | DATE : 2014-02-23 | PART NAME: MINI DP 2.1 SMT式母座(中心高6.0)带中夹片 |
| | CHECKED BY: 马跃 | DATE : 2014-02-23 | PART NO. : HYCW28-MDP20-060B |
| UNIT: mm [inch] | APPROVED BY: 邱敏 | DATE : 2014-02-23 | DRAW NO. : HYC-2603301127 |
| SCALE:1:1 SIZE: A4 | | | SHEET NO. : 1 OF 1 |



PACKAGE

- 1. SIZE :
 - REEL : DIA.=380mm
 - CORTON : 400x400x310mm (LxWxH)
- 2. QUANTITY :
 - 400 PCS/REEL
 - 10 REEL/CARTON = 4000PCS



| | | | | |
|---|--------------------|----------------------|-------------------|--------|
|  深圳市华宇创精密电子有限公司 | | | | |
| TOLERANCE: X.X ±0.30 X.XX ±0.25 X.XXX ±0.15 X.' ±2' X.X' ±0.5' | DRAWN BY : 陈一鸣 | DATE : 2014-02-23 | PART NAME: 包装图 | |
| | CHECKED BY: 马跃 | DATE : 2014-02-23 | PART NO. | |
| UNIT: mm [inch] SCALE:1:1 SIZE: A4 | APPROVED BY: 邱敏 | DATE : 2014-02-23 | DRAW NO: | |
| | | | SHEET NO. | 1 OF 1 |