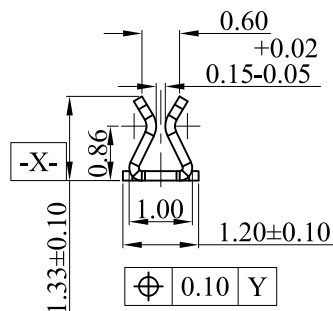
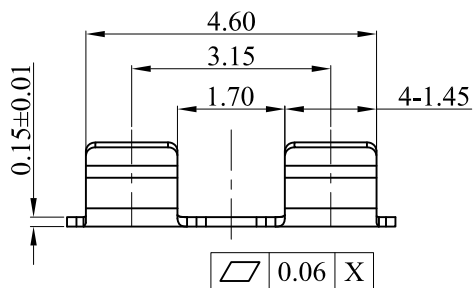
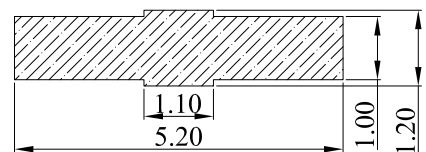


3D View

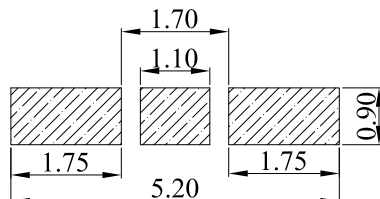


Solder Area



RECOMMENDED PCB LAYOUT

TOLERANCE:±0.05MM
(FOR REFERENCE ONLY)



METAL MASK T=0.08

TOLERANCE:±0.05MM
(FOR REFERENCE ONLY)

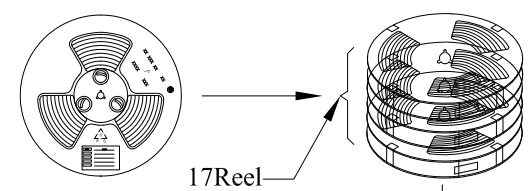
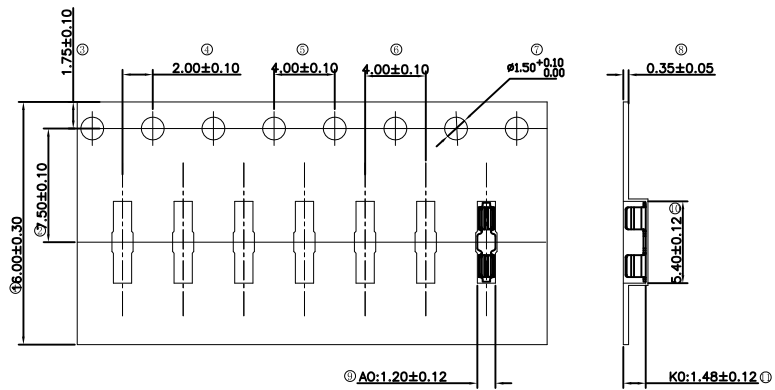
NOTES:

- 1:MATERIAL
1-1: SUS-301 THICKNE=0.15MM
- 2:SPECIFICATIONS
2-1: RATED CURRENT: 1.0A
2-2: VOLTAGE RATING: 1.5V
2-3: CONTACT RESISTANCE: 80mΩ/MAX
2-4:COLMPING FPRCE: 60-120g
2-5: WELDING THRUST: ≥3KG
2-6: OPERATING TEMPERATURE: -40°C~+85°C
- 3:DURABILITY: 200 CYCLES
- 4:SALT SPRAY TIME: 24H
- 5:ELECTROPLATE: THE NICKEL-PLATED SUBSTRATE IS 50u" MIN
- 6:REQUIREMENTS
6-1:TERMINAL TO EAT FULL TIN,NOTPEELING,
WELDING OBVIOUS COLOR AND OTHER ADVERSE
6-2:ROHS、 REACH、 HF HALOGER ADVERSE OF DOMESTIC
AND INTERNATIONAL ENVIRONMNTAL REQUIREMENTS

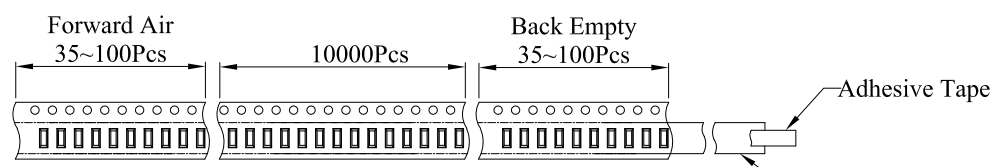


深圳市华宇创精密电子有限公司

TOLERANCE: X.X ±0.30 X.XX ±0.25 X.XXX ±0.15 X' ±2' X.X' ±0.5'	DRAWN BY : 陈一鸣	DATE : 2014-02-23	PART NAME: 屏蔽夹 L5. 20*W1. 20*H1. 33
	CHECKED BY: 马跃	DATE : 2014-02-23	PART NO. HYCW-PBJX13HX
UNIT: mm [inch] SCALE:1:1 SIZE: A4	APPROVED BY: 邱敏	DATE : 2014-02-23	DRAW NO: HYC-2604020935
			SHEET NO. 1 OF 1

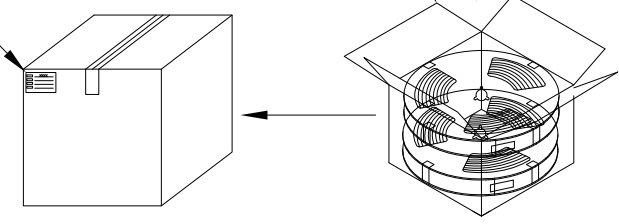
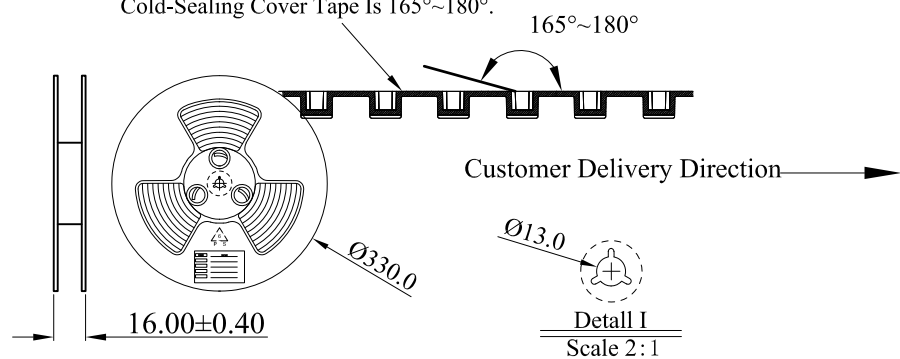


Carton Size
290*330*4 K3K



Carton Size
345*345*360 K=K

The Carrier Tape Is Cold-Sealed
And The Peeling Angle Of The
Cold-Sealing Cover Tape Is 165°~180°.



深圳市华宇创精密电子有限公司

TOLERANCE: X.X ±0.30 X.XX ±0.25 X.XXX ±0.15 X.' ±2' X.X' ±0.5'	DRAWN BY : 陈一鸣	DATE : 2014-02-23	PART NAME: 包装图	
	CHECKED BY: 马跃	DATE : 2014-02-23	PART NO.	
UNIT: mm [inch] SCALE:1:1 SIZE: A4	APPROVED BY: 邱敏	DATE : 2014-02-23	MOLD NO.	
			DRAW NO:	
			SHEET NO.	1 OF 1