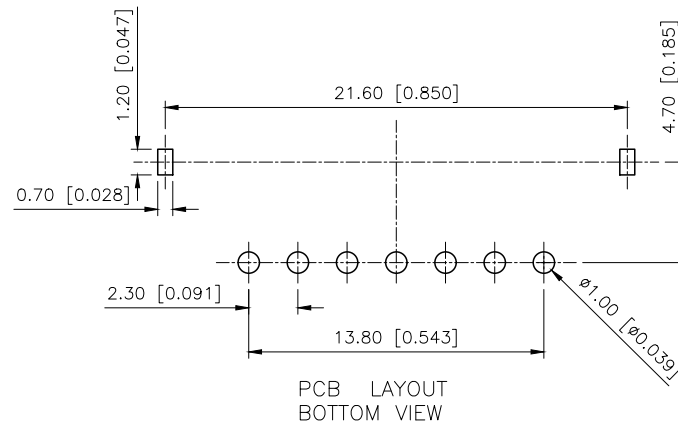
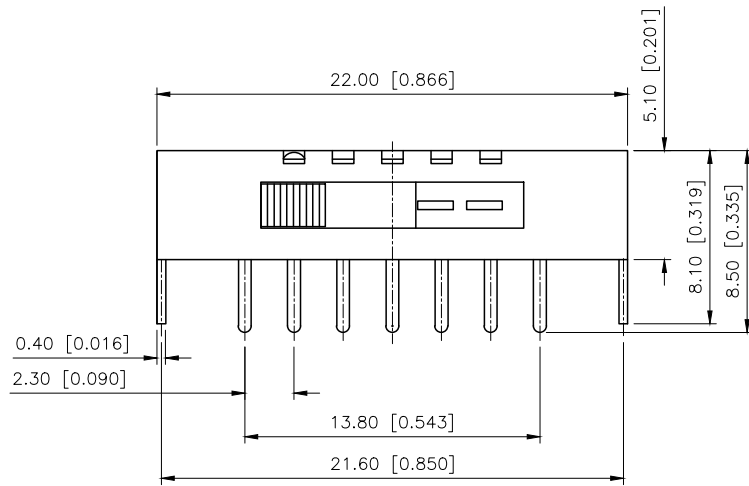
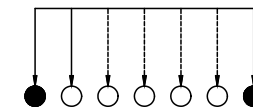


| REVISIONS | | | | | |
|-----------|------------------|----------|-------------|------------|--------|
| REV. | ECN NO. | LOCATION | DESCRIPTION | DATE | DESIGN |
| A1 | N/A | | 图面升级整理图面 | 2025.06.17 | 阿树 |
| A2 | ECN-P-2025120101 | A2X1 | 根据实物变更尺寸 | 2025.12.01 | 阿树 |



SS15E01X

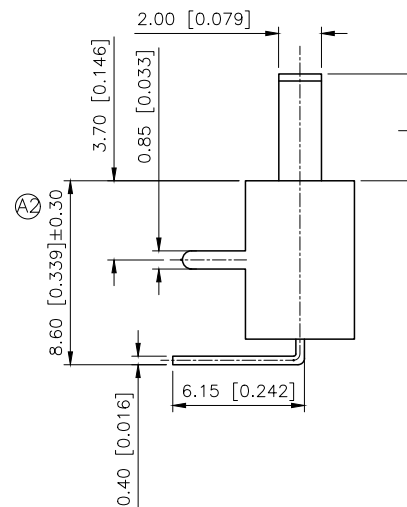
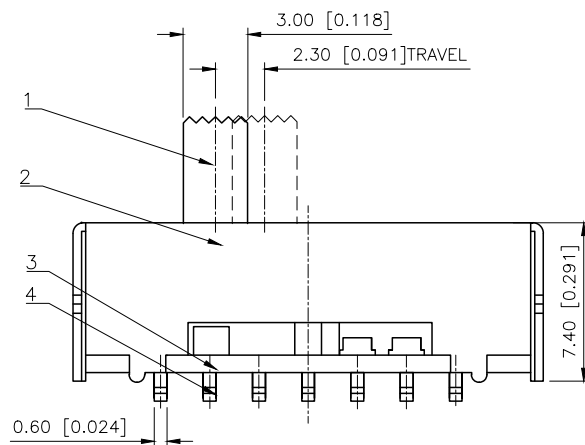
L(mm)
2~10



SCHEMATIC

| | |
|-----------------------|-------------|
| RATING | 0.3A 50V DC |
| CIRCUIT | 1P7T |
| INSULATION RESISTANCE | 30MΩ Min |
| CONTACT RESISTANCE | 100MΩ MAX |
| TRAVEL | 2.30MM |
| OPERATING FORCE | 250±100gf |
| OPERATING LIFE | 10000 |

| | | | | |
|----|------------|-----|----------------|-----------|
| 7 | Spring | 1 | Steel wire | NATURAL |
| 6 | Steel ball | 1 | Steel | NATURAL |
| 5 | Contact | 1 | PBS strip | AG clad |
| 4 | Terminal | 7 | Brass strip | AG Plated |
| 3 | Base | 1 | Phenolic resin | NATURAL |
| 2 | Frame | 1 | Steel strip | Ni Plated |
| 1 | Knob | 1 | NYLON | Black |
| NO | NAME | QTY | MATERIAL | Remark |



| | |
|------------------------|-------|
| AuGLAR | ±5° |
| X. | ±0.40 |
| X.x | ±0.30 |
| X.xx | ±0.20 |
| X.xxx | ±0.15 |
| UNSPECIFIED TOLERANCES | ±0.15 |



| | | | | | |
|----------|----|-------|-------|-------------|--------------|
| DESIGN | 阿树 | VIEW: | | MODEL TYPE: | SLIDE SWITCH |
| CHECKED | | UNIT: | mm/in | PART NO.: | SS15E01X |
| APPROVED | | SIZE: | A4 | DWG NO.: | |