

深圳市晶力源科技有限公司

Shenzhen Jingliyuan Technology Co., Ltd.

产品规格书 SPECIFICATION

CUSTOMER(客户): _____
PRODUCT TYPE(型号): SMD-3225-4P SAW谐振器(无源)
NOMINAL FREQ(频率): 433.92MHz
JLY P/N(料号): Y3225433MFC4H
Brand(品牌): JLYE晶力源
CUSTOMER P/N(客户料号): _____

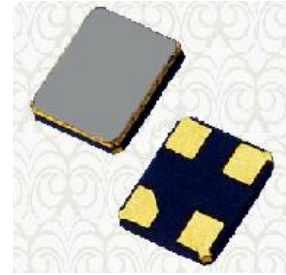
Client Opinion (客户意见)			
Hardware PL (工程)	QPM/SQE (品质)	Approval (核准)	Recognition (承认日期)

Provider (供应商)			
Drawn (制作)	Check (审核)	Approval (核准)	Submitted Date (日期)
刘来凤	徐超	李元	2026-3-19

公司地址 Company address: 深圳市福田区天安数码时代大厦2310室
23Floor, The South Tower Hu Bei Building Bin He Road ,Fu tian District, Shen Zhen
电话 TEL:+86-755-88914319: 传真 FAX:+86-755-88914315
公司网址 Company website: <http://www.cpssz.com>: 邮箱地址: Lisa@cpssz.com

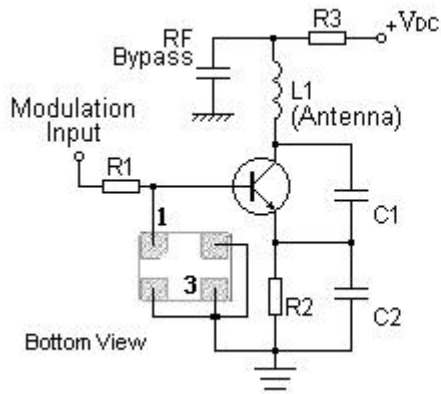
Features

- 1-port Resonator
- Ceramic Package for **Surface Mounted Technology (SMT)**
- **RoHS** compatible
- Package size 3.20x2.50x0.70mm³
- **Electrostatic Sensitive Device(ESD)**

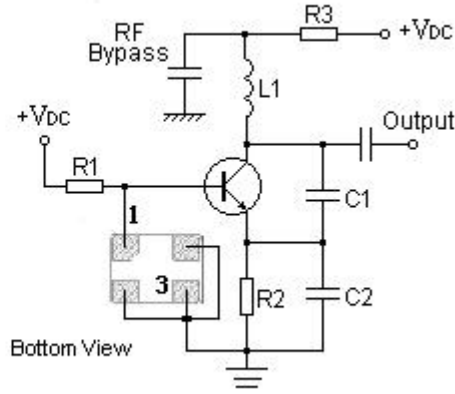


Application

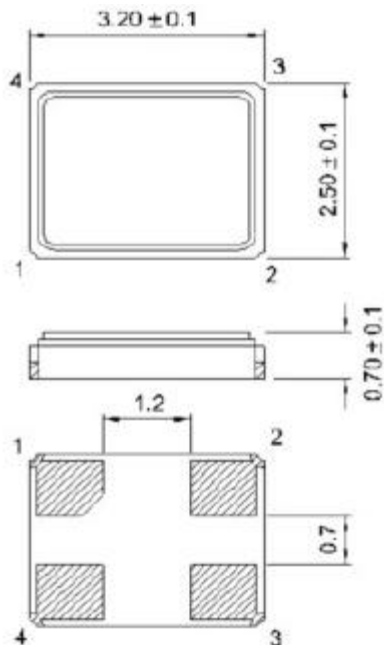
Typical Low-Power Transmitter Application



Typical Local Oscillator Application



Package Dimensions (DCC4C)



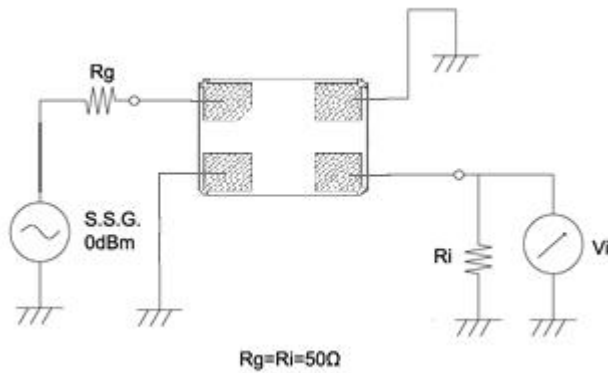
Pin Configuration

1	Input/ Output
3	Output/ Input
2,4	Ground

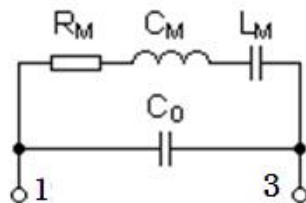


SF	Trademark
R	SAW Resonator
433M	Part number
●	Pin 2
YYWW	Year Code & Week Code

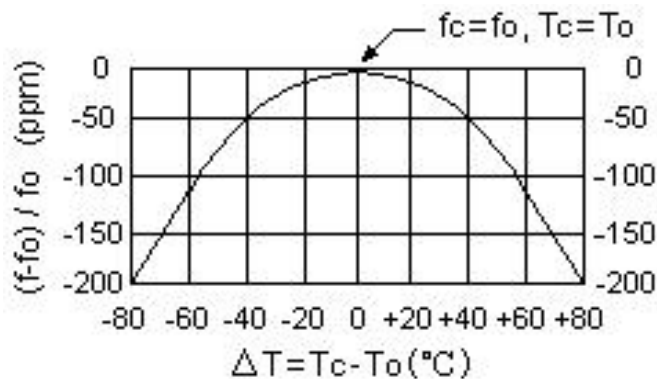
Test Circuit



Equivalent LC Model



Temperature Characteristics



The curve shown above accounts for resonator contribution only and does not include LC component temperature contributions.

Maximum Rating

Item		Value	Unit
DC Voltage	V_{DC}	10	V
Operation Temperature	T	-40 ~ +85	°C
Storage Temperature	T_{stg}	-45 ~ +85	°C
RF Power Dissipation	P	10	dBm
Moisture Sensitivity Level	MSL	2	/

Electronic Characteristics

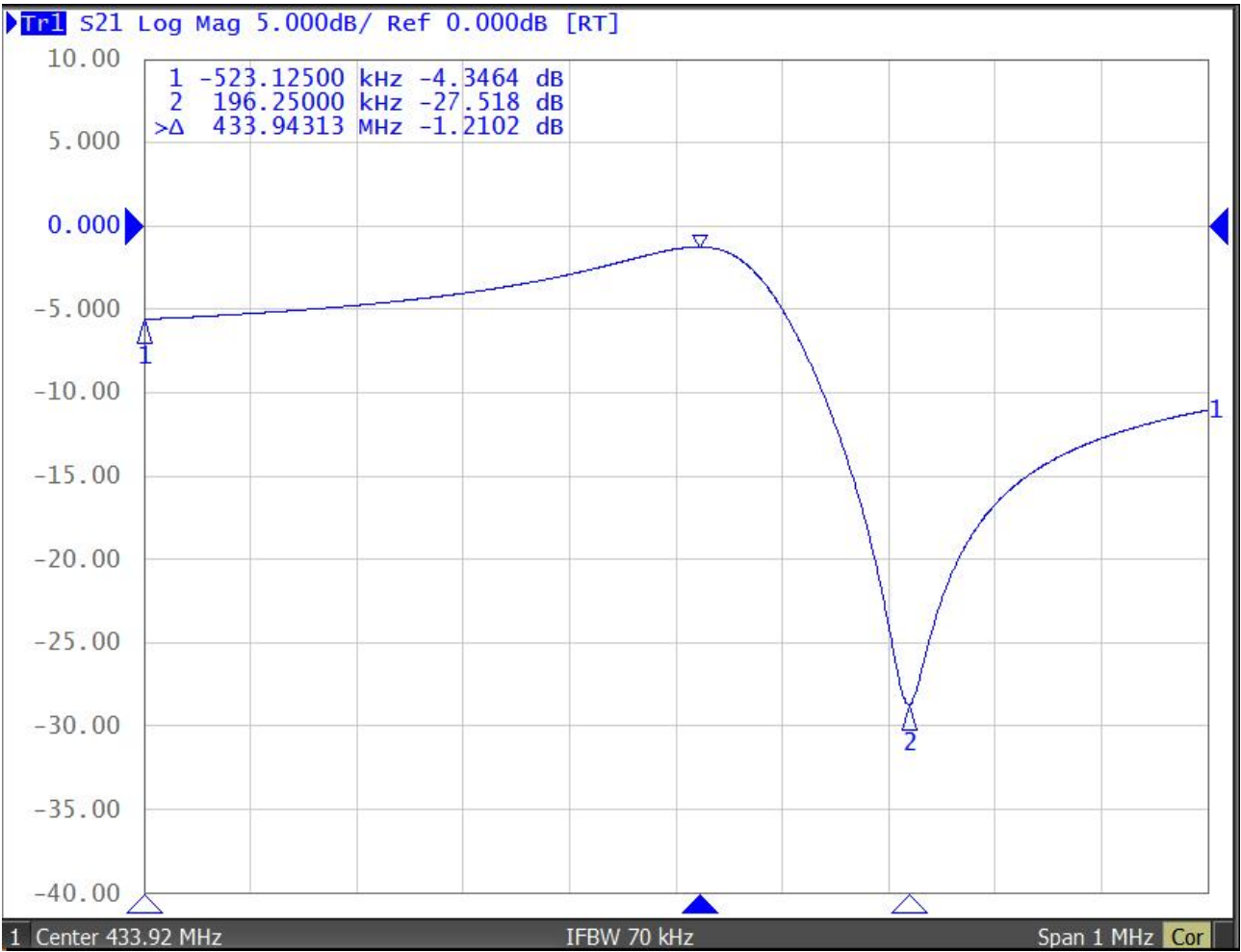
Test Temperature: $25^{\circ}\text{C} \pm 2^{\circ}\text{C}$

Terminating source impedance: 50Ω

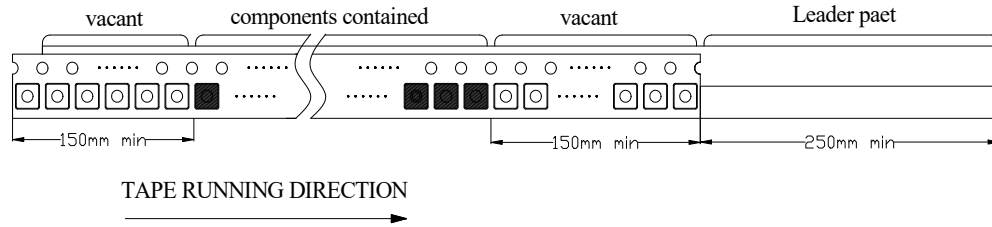
Terminating load impedance: 50Ω

Item			Minimum	Typical	Maximum	Unit
Center Frequency	Absolute Frequency	f_c		433.920		MHz
	Tolerance from 433.920MHz	Δf_c		± 75		KHz
Insertion Loss(min)		IL		1.3	2.0	dB
Frequency Aging	Absolute Value during the First Year	$ f_A $		≤ 10		ppm/yr
RF Equivalent RLC Model	Static Capacitance	C_0	1.4	1.9	2.4	pF

Frequency Response

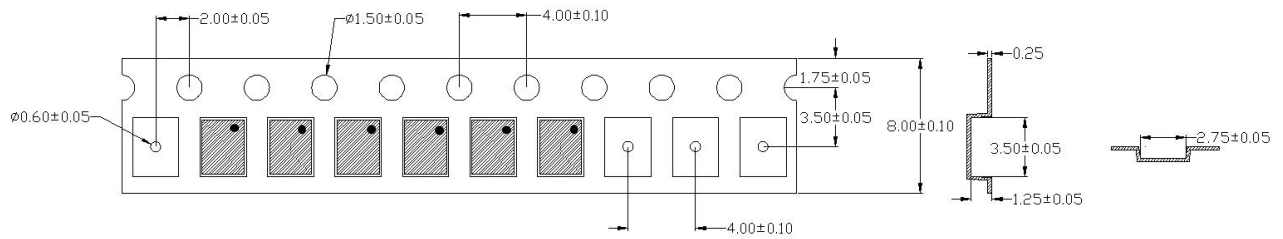


Carrier Tape



Reel Dimensions

Unit: mm



Outer Packing

Unit: mm

The diagram shows the outer packing (reel) with various views and dimensions. Dimensions include $\phi 179.0 \pm 0.5$, $\phi 57.0 \pm 0.5$, $\phi 13.5 \pm 0.2$, $\phi 4.3 \pm 0.2$, 11.9 ± 1.5 , 9.8 ± 1.5 , 4.0 ± 0.5 , 5.0 ± 0.5 , 3.0 ± 0.5 , 1.1 ± 0.3 , 1.1 ± 0.3 , 2.3 ± 0.15 , 4.7 ± 0.3 , and 4.7 ± 0.3 . A detail view 'A' is shown at a 2:1 magnification.

① $\phi 179.0 \pm 0.5$	⑥ 4.0 ± 0.5	⑪ 1.1 ± 0.3
② $\phi 57.0 \pm 0.5$	⑦ 5.0 ± 0.5	⑫ 1.1 ± 0.3
③ $\phi 13.5 \pm 0.2$	⑧ 9.8 ± 1.5	⑬ 4.7 ± 0.3
④ 2.3 ± 0.15	⑨ 11.9 ± 1.5	⑭ 4.7 ± 0.3
⑤ 3.0 ± 0.5	⑩ 4.3 ± 0.2	

工程名称	塑胶卷轴	设计	Linger
规格	7*x 8 mm	绘画	Linger
材料	PS料	审核	李露
日期	2014/10/07	备注	

3000 pcs/reel

Type	Quantity	Dimension	Description
Internal box	3000	179×57×13.5	carton box 2 reel / internal box 1 boxes / external box
External box	6000	235×205×210	

Unit: mm

Notes

1. As a result of the particularity of inner structure of SAW products, it easy to be breakdown by electrostatic, so we should pay attention to **ESD protect** in the test.
2. **Static voltage** between signal load and ground may cause deterioration and destruction of the component. Please avoid static voltage.
3. **Ultrasonic cleaning** may cause deterioration and destruction of the component. Please avoid ultrasonic cleaning.
4. Only leads of component may **be soldered**. Please avoid soldering another part of component.
5. There is a close relationship between the device's performance and **matching network**. The specifications of this device are based on the test circuit shown above. L and C values may change depending on board layout. Values shown are intended as a guide only.